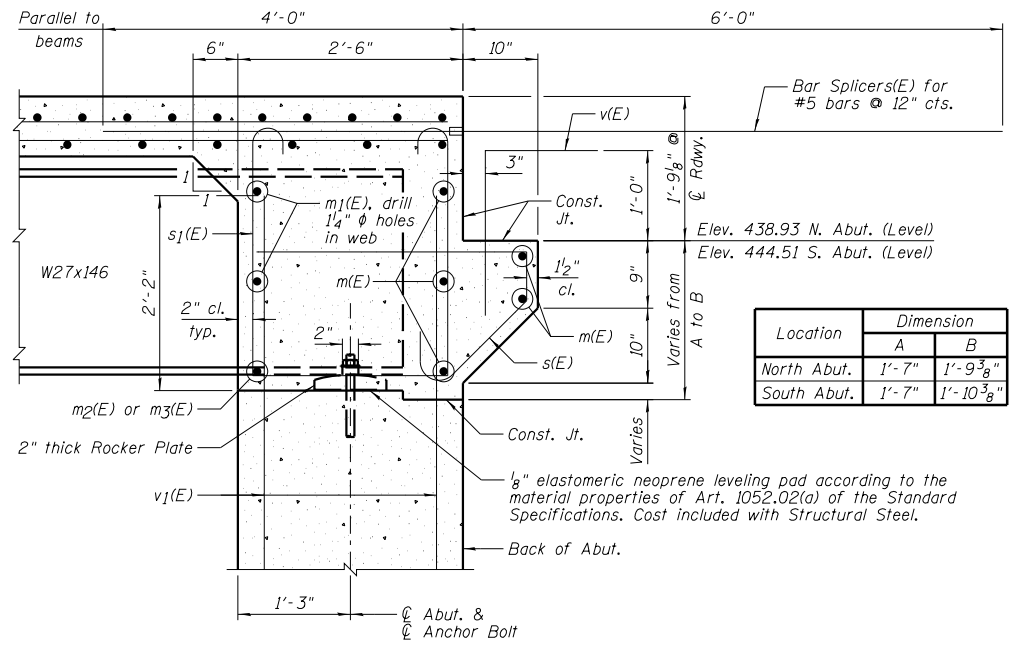


ELEVATION OF DIAPHRAGM AT NORTH ABUTMENT
(Similar to South Abutment)

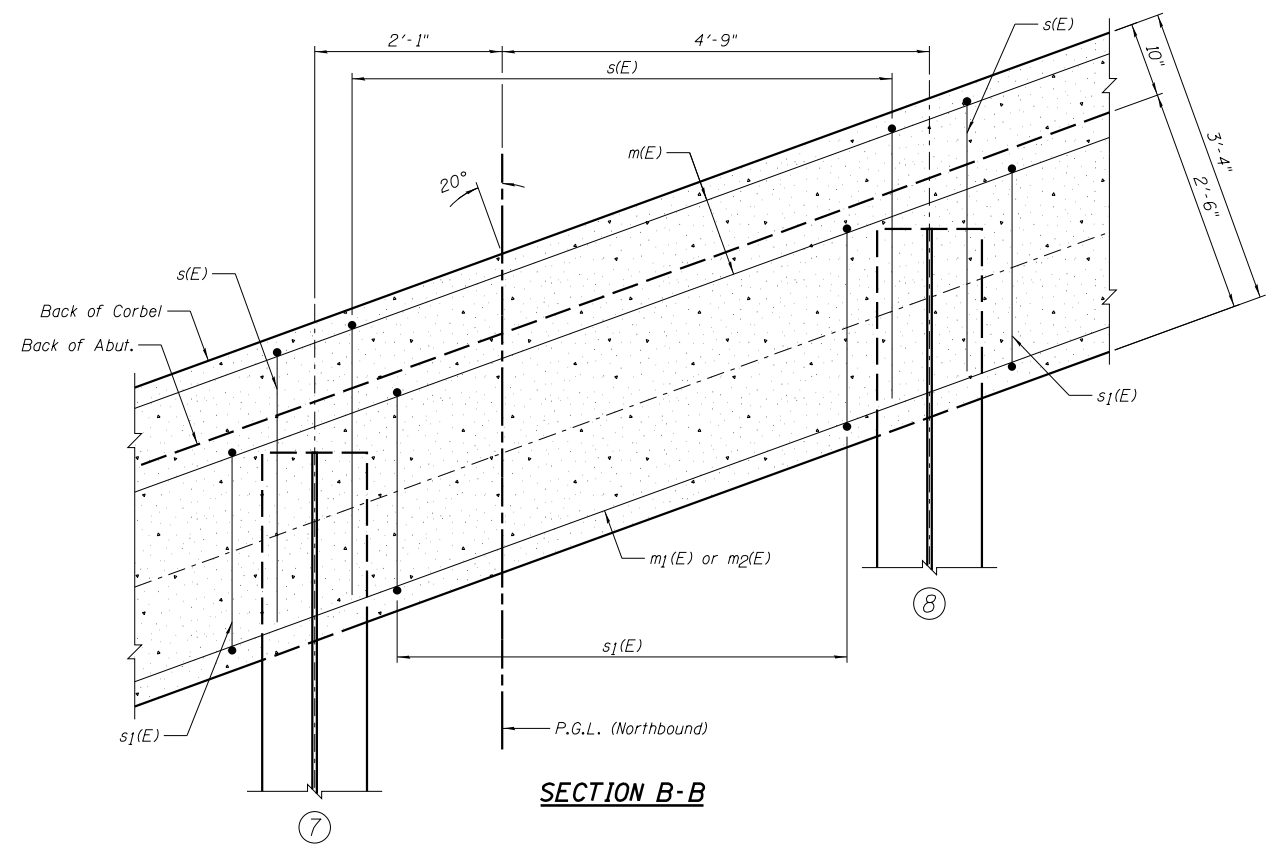
BAR LAP
#6 - 3'-4"



SECTION A-A

Dimensions @ Rt. L's except as noted.

Location	Dimension	
	A	B
North Abut.	1'-7"	1'-9 ³ / ₈ "
South Abut.	1'-7"	1'-10 ³ / ₈ "



SECTION B-B

NOTES:

- 1.) See Sheet B14 for Superstructure Details and Bill of Material.
- 2.) See Sheet B23 for Fixed Bearing Details.
- 3.) F.F. denotes Front Face, B.F. denotes Back Face and E.E. denotes Each End.
- 4.) See Sheet B36 for Bar Splicer Details.
- 5.) Bars indicated thus 2x6-#6 indicates 2 lines of bars with 6 lengths per line.
- 6.) The s(E) and s1(E) bars shall be placed parallel to the beams. Spacing for these bars shall be at right angles to the beams.

Farnsworth GROUP, INC.
2709 McGraw Drive
Bloomington, Illinois 61704
309/663-8435, 309/663-1571 fax

DESIGNED - TCR	REVISION
CHECKED - JML	REVISION
DRAWN - JWK/DJM	REVISION
CHECKED - MSW	REVISION
DATE - 10/18/12	

STATE OF ILLINOIS
DEPARTMENT OF TRANSPORTATION

DIAPHRAGM DETAILS, NORTHBOUND ROADWAY
STRUCTURE NO. 082-0314 NB & 082-0315 SB

SHEET NO. B16 OF 50 SHEETS

F.A.P. RTE.	SECTION	COUNTY	TOTAL SHEETS	SHEET NO.
788	520-1-2HVB-1	ST. CLAIR	237	149
CONTRACT NO. 76848				

ILLINOIS FED. AID PROJECT