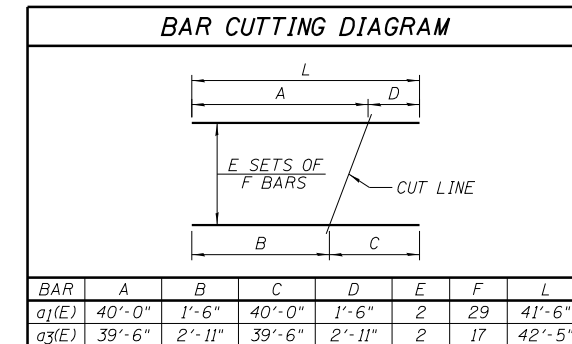


INSIDE ELEVATION OF PARAPET

BAR LAP	
#4	2'-0"
#8	5'-2"

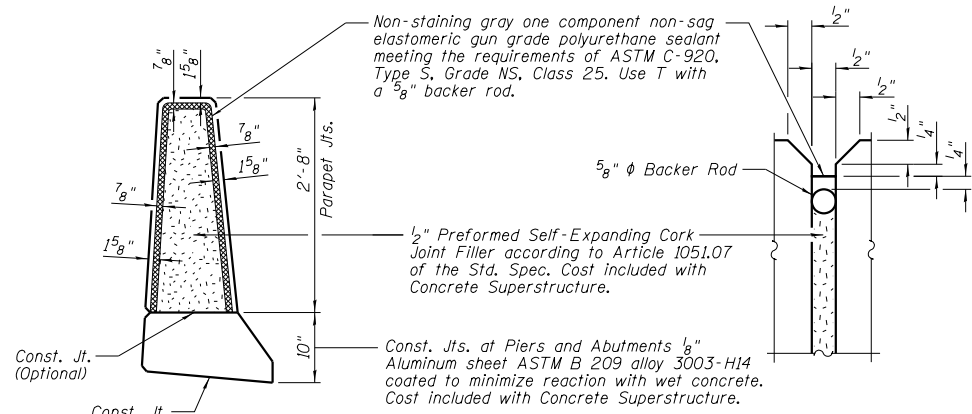


BAR	A	B	C	D	E	F	L
a1(E)	40'-0"	1'-6"	40'-0"	1'-6"	2	29	41'-6"
a3(E)	39'-6"	2'-11"	39'-6"	2'-11"	2	17	42'-5"

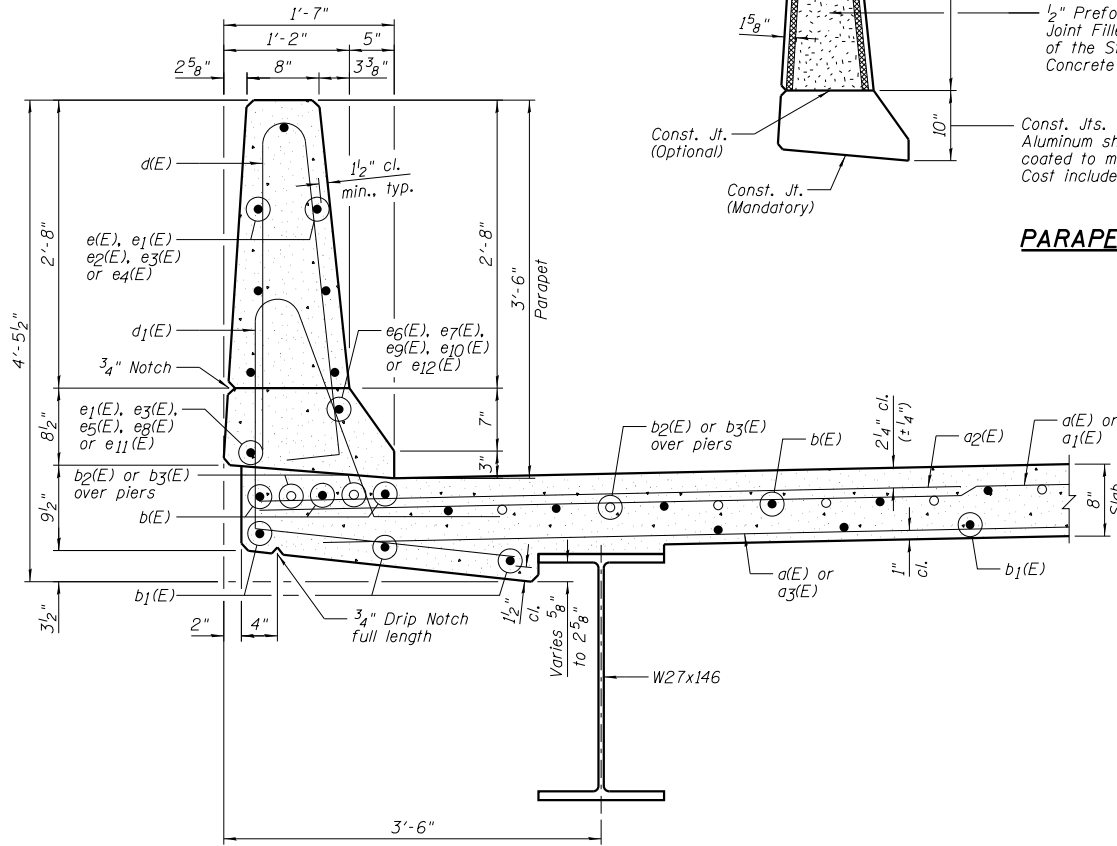
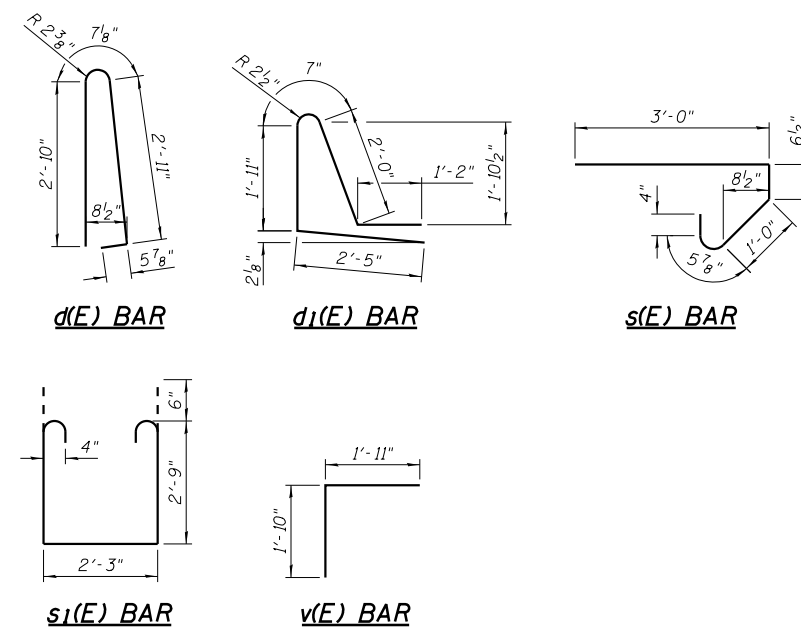
SUPERSTRUCTURE BILL OF MATERIAL

Bar	No.	Size	Length	Shape
a(E)	1184	#5	40'-6"	—
a1(E)	58	#5	41'-6"	—
a2(E)	1580	#6	6'-6"	—
a3(E)	34	#5	42'-5"	—
a4(E)	8	#5	43'-1"	—
b(E)	616	#5	30'-9"	—
b1(E)	496	#5	27'-3"	—
b2(E)	82	#6	37'-0"	—
b3(E)	82	#6	33'-0"	—
d(E)	872	#5	6'-10"	—
d1(E)	872	#5	8'-1"	—
e(E)	84	#4	19'-2"	—
e1(E)	64	#4	9'-8"	—
e2(E)	84	#4	18'-0"	—
e3(E)	64	#4	8'-8"	—
e4(E)	84	#4	15'-10"	—
e5(E)	12	#4	20'-9"	—
e6(E)	8	#8	31'-8"	—
e7(E)	8	#8	9'-8"	—
e8(E)	12	#4	19'-7"	—
e9(E)	8	#8	29'-11"	—
e10(E)	8	#8	8'-8"	—
e11(E)	12	#4	17'-5"	—
e12(E)	8	#8	26'-8"	—
m(E)	20	#6	43'-5"	—
m1(E)	48	#6	10'-1"	—
m2(E)	20	#6	6'-10"	—
m3(E)	8	#6	3'-3"	—
s(E)	164	#5	5'-4"	—
s1(E)	144	#4	8'-9"	—
v(E)	176	#5	3'-9"	—
Item	Unit	Quantity		
Concrete Superstructure	Cu. Yd.	581.2		
Reinforcement Bars, Epoxy Coated	Pound	137,080		
Bar Splicers	Each	176		

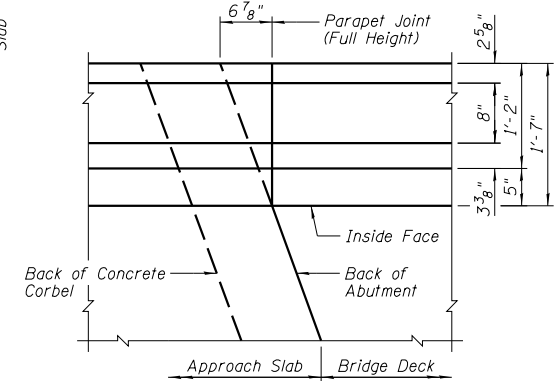
Note: Bill of Material is for two bridge decks.



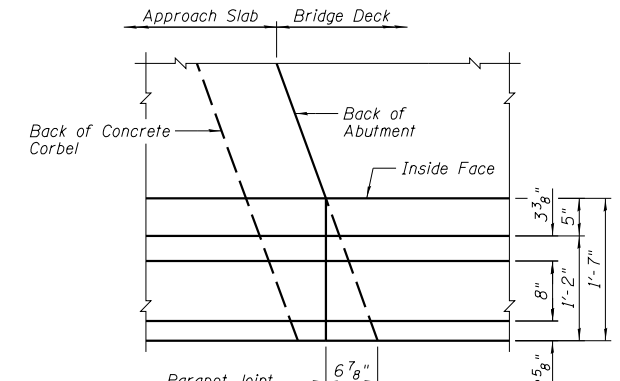
PARAPET JOINT DETAILS



SECTION THRU PARAPET



DETAIL A



DETAIL B

NOTES:

- 1.) B.F. denotes Back Face and F.F. denotes Front Face.
- 2.) Inside elevation of parapet view is exaggerated vertically to show reinforcement.
- 3.) Bars indicated thus 1x3-#4 etc. indicates 1 line of bars with 3 lengths per line.
- 4.) For location of Detail A and Detail B, see Sheets B11 & B12.

Farnsworth GROUP, INC.
2705 McGraw Drive
Bloomington, Illinois 61704
309/663-8435, 309/663-1571 fax

DESIGNED - TCR	REVISED
CHECKED - JML	REVISED
DRAWN - JWK/DJM	REVISED
CHECKED - MSW	REVISED
DATE - 10/18/12	

STATE OF ILLINOIS DEPARTMENT OF TRANSPORTATION

**SUPERSTRUCTURE DETAILS
STRUCTURE NO. 082-0314 NB & 082-0315 SB**

SHEET NO. B14 OF 50 SHEETS

F.A.P. RTE.	SECTION	COUNTY	TOTAL SHEETS	SHEET NO.
788	520-1-2HV-B-1	ST. CLAIR	237	147
CONTRACT NO. 76848				
ILLINOIS FED. AID PROJECT				