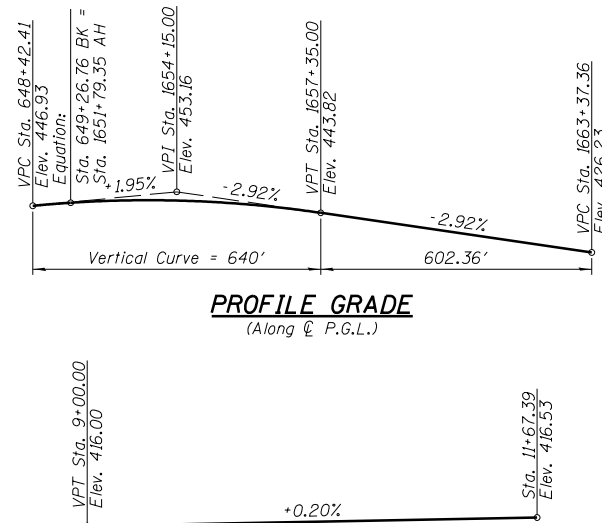


TOTAL BILL OF MATERIAL

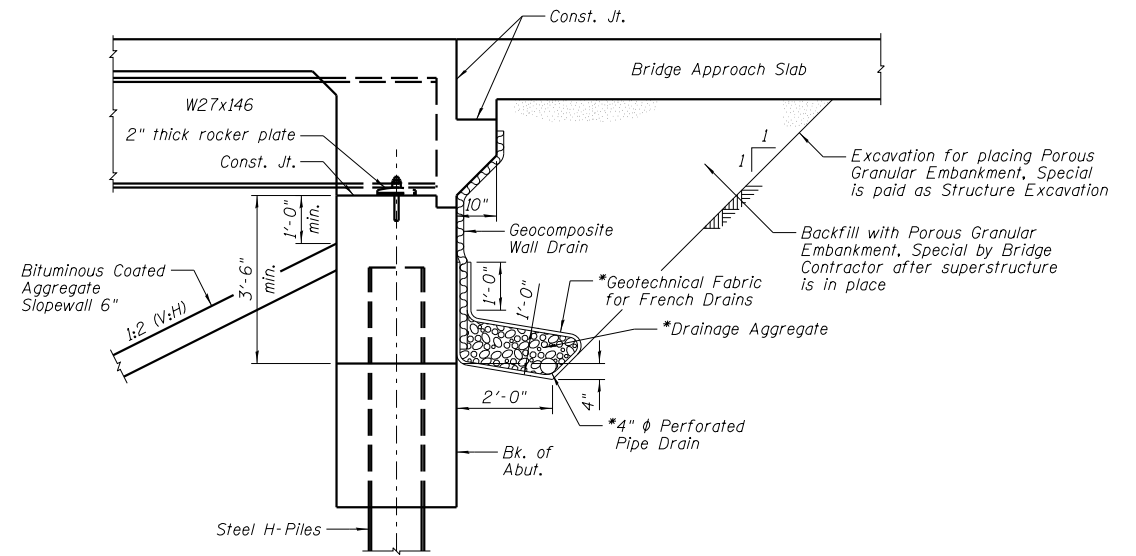
ITEM	UNIT	SUPER	SUB	TOTAL
Structure Excavation	Cu. Yd.		834	834
Concrete Structures	Cu. Yd.	52.4	501.3	553.7
Concrete Superstructure	Cu. Yd.	839.1		839.1
Bridge Deck Grooving	Sq. Yd.	2,086		2,086
Concrete Encasement	Cu. Yd.		13.2	13.2
Protective Coat	Sq. Yd.	2,652		2,652
Furnishing and Erecting Structural Steel	L Sum	0.3		0.3
Stud Shear Connectors	Each	10,152		10,152
Reinforcement Bars, Epoxy Coated	Pound	202,280	79,650	281,930
Bar Splicers	Each	176		176
Mechanical Splicers	Each		544	544
Slope Wall 4 Inch	Sq. Yd.		172	172
Furnishing Metal Shell Piles 14" x 0.312"	Foot		4,186	4,186
Furnishing Steel Piles HPI4X117	Foot		2,000	2,000
Driving Piles	Foot		6,186	6,186
Test Pile Metal Shells	Each		4	4
Test Pile Steel HPI4X117	Each		4	4
Name Plates	Each	2		2
Anchor Bolts, 1"	Each	96		96
Geocomposite Wall Drain	Sq. Yd.		140	140
Pipe Underdrains for Structures 4"	Foot		389	389
Bituminous Coated Aggregate Slopewall 6"	Sq. Yd.		1,566	1,566
Porous Granular Embankment, Special	Cu. Yd.		248	248
Bridge Fence Railing (Special)	Foot	792		792

GENERAL NOTES:

- Fasteners shall be AASHTO M164 Type 1, mechanically galvanized bolts in painted areas and M164 Type 3 in unpainted areas. Bolts $\frac{1}{2}$ in. ϕ , holes $\frac{5}{16}$ in. ϕ , unless otherwise noted.
- Calculated weight of Structural Steel = 392,490 lbs.
- All structural steel shall be AASHTO M 270 Grade 50W.
- No field welding is permitted except as specified in the contract documents.
- Reinforcement bars designated (E) shall be epoxy coated.
- If the Contractor elects to use cantilever forming brackets on the exterior beams or girders, the brackets shall be placed at the same locations as required for the hardwood blocks in Article 503.06(b) of the Standard Specifications. If additional cantilever forming brackets are required, hardwood blocking shall be wedged between the exterior and first interior beam at each of these additional bracket locations.
- Bearing seat surfaces shall be constructed or adjusted to the designated elevations within a tolerance of $\frac{1}{8}$ in. (0.01 ft.). Adjustment shall be made either by grinding the surface or by shimming the bearings.
- Structural steel shall only be painted for a distance equal to the depth of embedment into the concrete cap plus 3 in. Painted areas shall be primed in the shop with a Department approved zinc rich primer. Field painting will not be required.
- The embankment configuration shown shall be the minimum that must be placed and compacted prior to construction of the abutments.
- Slip Forming of parapets is not allowed.
- Wick Drains shall be used to expedite the embankment settlement. See Roadway Plans for quantities, layout and locations.

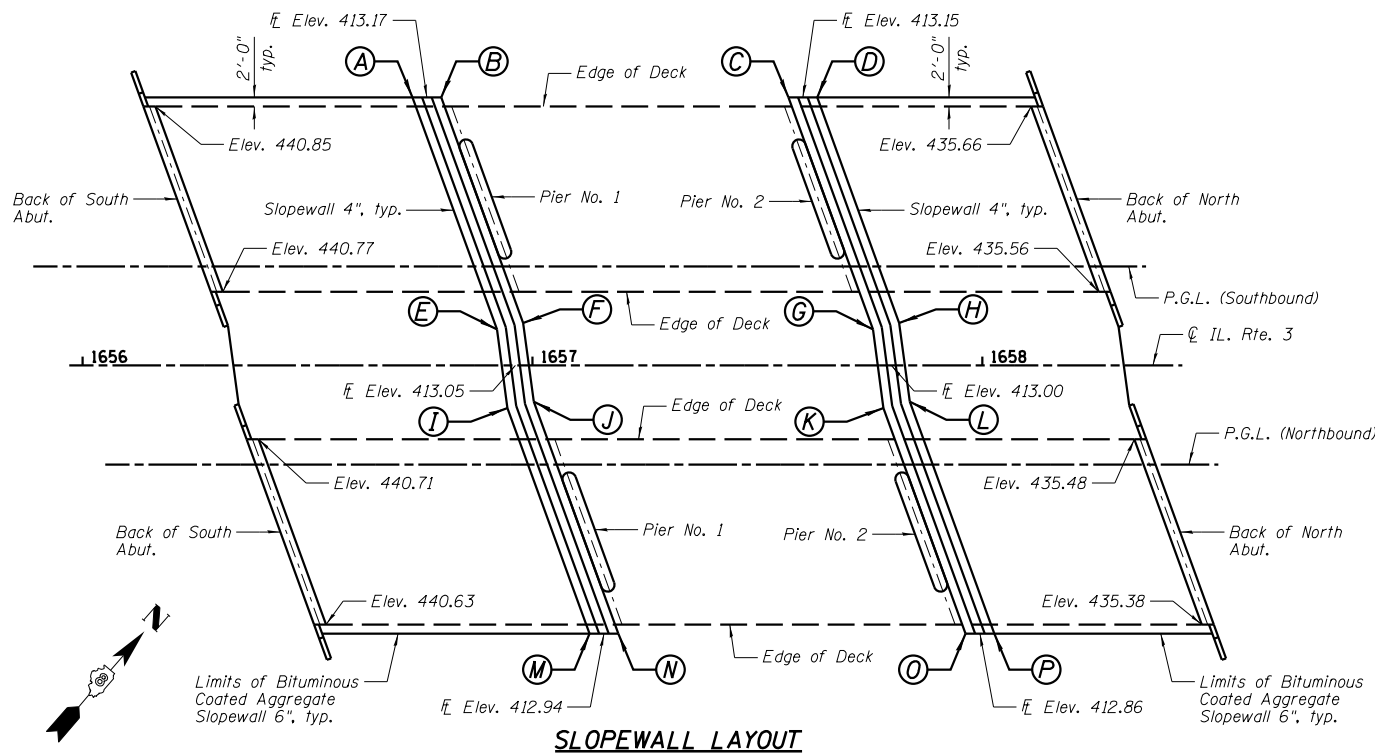


TRRA TRACK PROFILE GRADE
(Top of rail along C Tracks)



SECTION THRU NORTH ABUTMENTS
(Similar for South Abutments)

- NOTES:**
- Horizontal dimensions @ Rt. L's to Abutment.
 - *Included in the cost of Pipe Underdrains for Structures 4".
 - All drainage system components shall extend to 2'-0" from the end of each wingwall except an outlet pipe shall extend until intersecting with the side slopes. The pipes shall drain into concrete headwalls. (See Article 601.05 of the Standard Specifications and Highway Standard 601101)

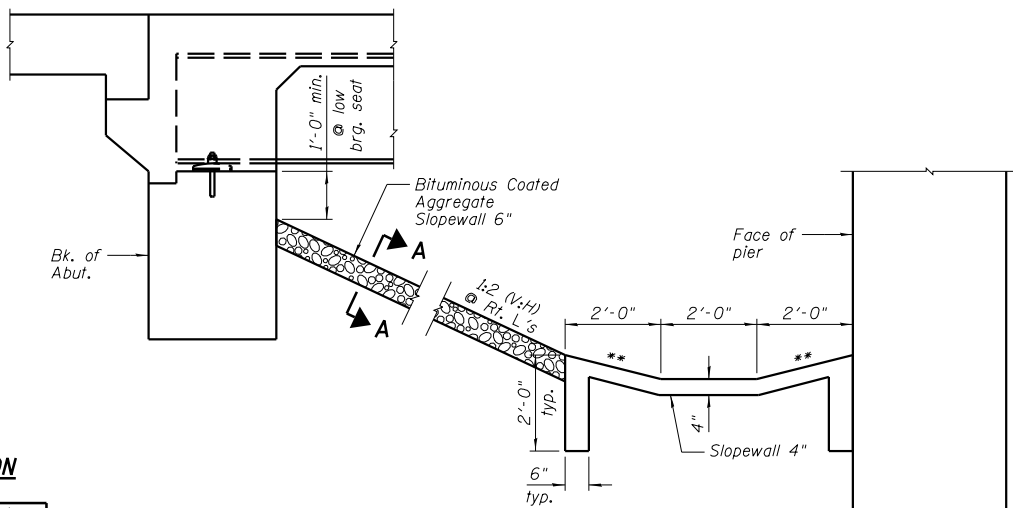


SLOPEWALL LAYOUT

SLOPEWALL LOCATION

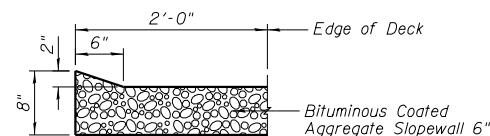
Location	Station	Offset
A	1656+73.34	59.58' LT.
B	1656+79.72	59.58' LT.
C	1657+79.72	59.58' LT.
D	1657+63.30	59.58' LT.
E	1656+92.11	8.01' LT.
F	1656+97.97	9.45' LT.
G	1657+75.69	8.01' LT.
H	1657+81.55	9.45' LT.
I	1656+94.45	9.45' RT.
J	1657+00.31	8.01' RT.
K	1657+78.03	9.45' RT.
L	1657+83.89	8.01' RT.
M	1657+12.70	59.58' RT.
N	1657+19.08	59.58' RT.
O	1657+96.28	59.58' RT.
P	1658+02.64	59.58' RT.

Note: Stations and offsets for the Slope Wall 4" are from C IL. Rte. 3.



SECTION THRU SLOPEWALL

- NOTES:**
- **1:4 (V:H)
 - (Horizontal dimensions @ Rt. L's)
 - Slopewall shall be reinforced with welded wire fabric, 6 in. x 6 in. - W4.0 x W4.0, weighing 58 lbs. per 100 Sq. Ft.



SECTION A-A



DESIGNED - TCR	REVISED
CHECKED - JML	REVISED
DRAWN - JWK/DJM	REVISED
CHECKED - MSW	REVISED
DATE - 10/18/12	

**STATE OF ILLINOIS
DEPARTMENT OF TRANSPORTATION**

**GENERAL DATA
STRUCTURE NO. 082-0314 NB & 082-0315 SB**

SHEET NO. B2 OF 50 SHEETS

F.A.P. RTE.	SECTION	COUNTY	TOTAL SHEETS	SHEET NO.
788	520-1-2HBV-1	ST. CLAIR	237	135
CONTRACT NO. 76848				
ILLINOIS FED. AID PROJECT				