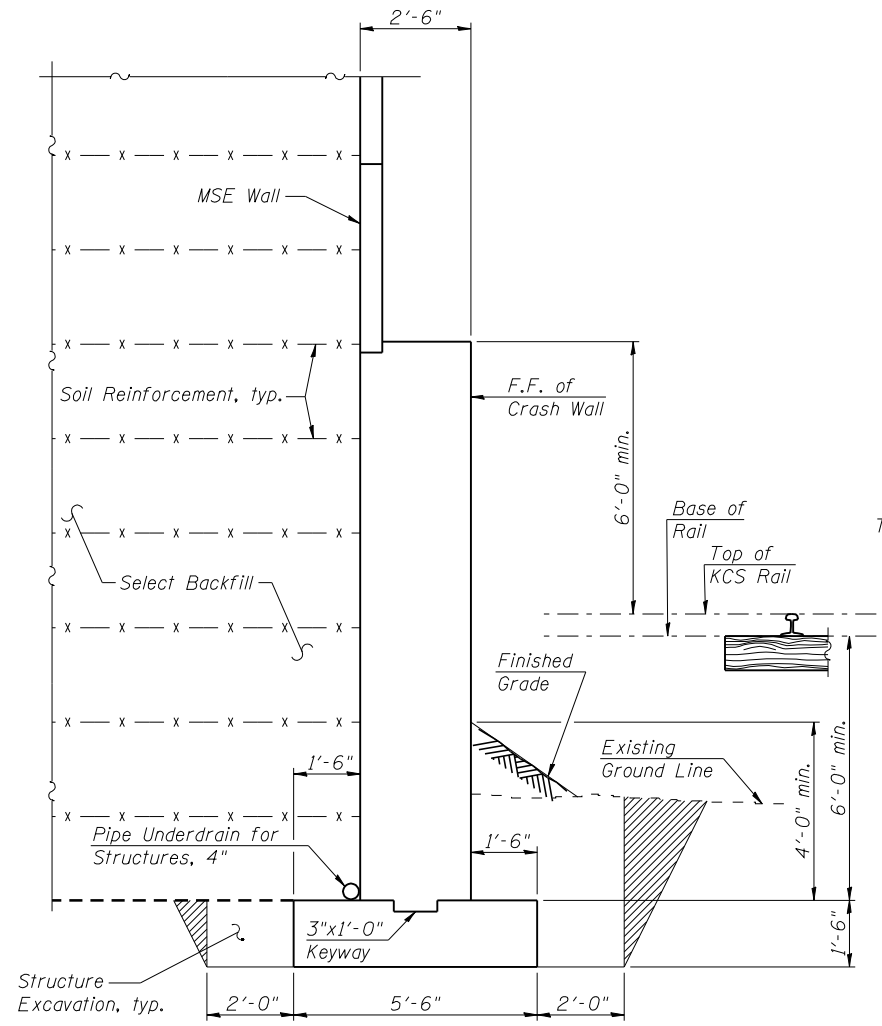


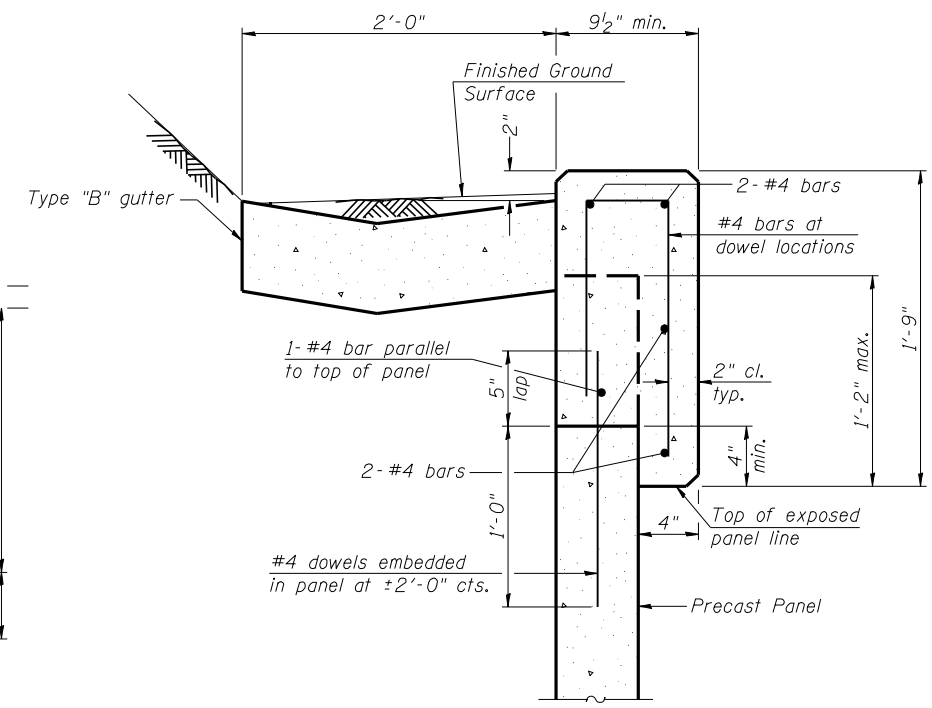
TYPICAL MSE WALL SECTION

**Over-excavation beyond the limits of structure excavation. This area not measured for payment, typ.

* Max elevation taken from top of footing/leveling pad to top of abutment.
 ** Backfill over-excavation with same material as used for select fill.



TYPICAL CRASH WALL SECTION
 (South Abutment MSE Wall only.)



COPING DETAIL

Notes:
 Fence post locations shall be coordinated with the MSE Wall supplier to avoid conflicts with soil reinforcement.
 Fence posts shall be vertical when erected.
 Concrete and reinforcement bars in coping are included in the cost of Mechanically Stabilized Earth Retaining Wall.
 Soil reinforcement shall extend to base of crash wall. Limits of reinforced soil mass shall be designed to include the crash wall.
 Soil Reinforcement shall be spaced to avoid corrugated pipe encased piles and PVC downspouts.
 Panel reinforcement shall be epoxy coated.
 See sheet C2 of 76 for Section Thru Abutment.
 See sheet C3 of 76 for pile layout at abutments.
 See sheets C36 thru C43 of 76 for additional pile details.



USER NAME =	DESIGNED - PSS	REVISED -
FILE NAME =	CHECKED - KHH	REVISED -
PLOT SCALE =	DRAWN - AJF	REVISED -
PLOT DATE =	CHECKED - KHH	REVISED -

STATE OF ILLINOIS
DEPARTMENT OF TRANSPORTATION

MSE WALL SECTIONS AND DETAILS
STRUCTURE NO. 082-0334 (N.B.) & 082-0335 (S.B.)

SHEET NO. C55 OF 76 SHEETS

F.A.P. RTE.	SECTION	COUNTY	TOTAL SHEETS	SHEET NO.
788	520-1-2HVB	ST. CLAIR	237	112
CONTRACT NO. 76848				

ILLINOIS FED. AID PROJECT