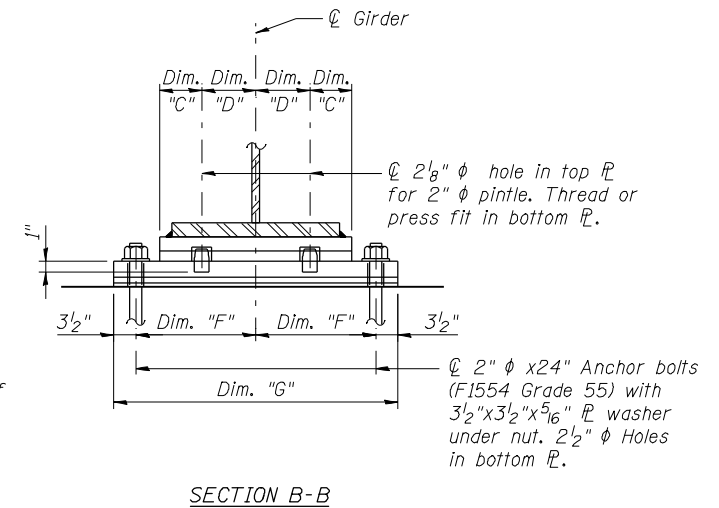
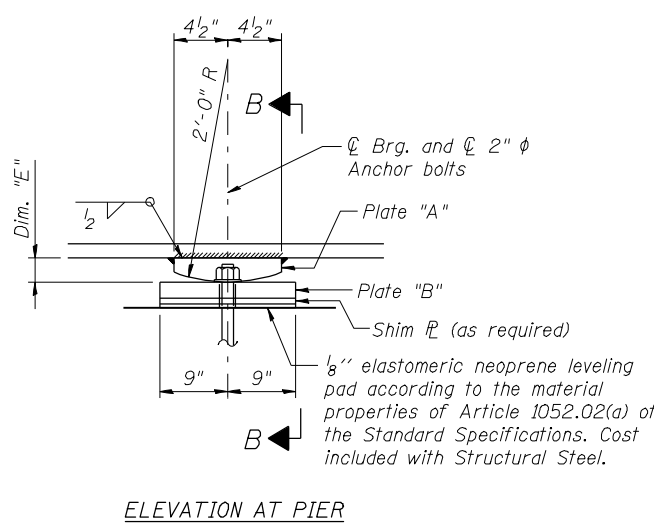
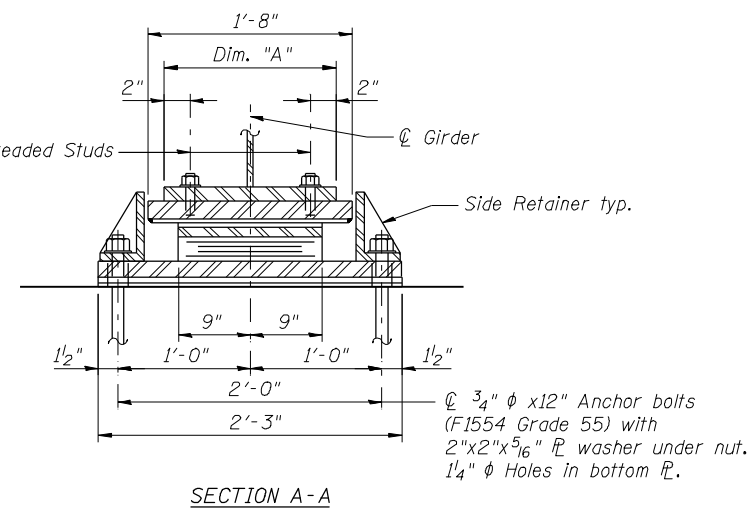
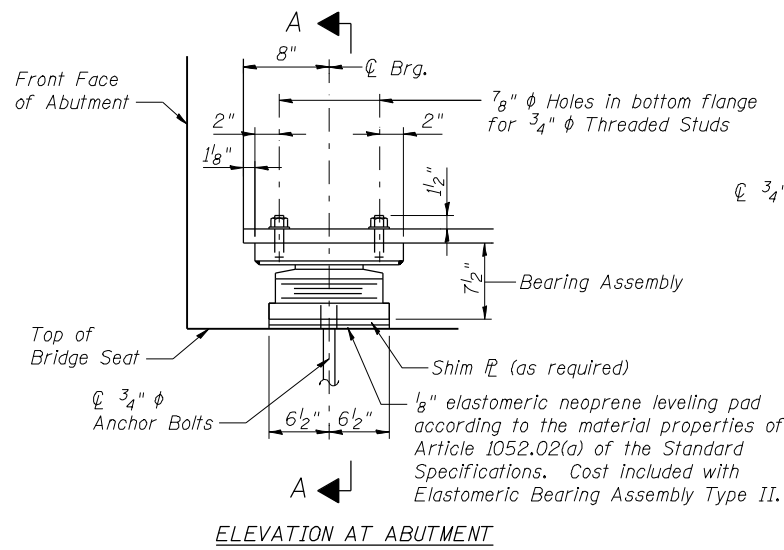
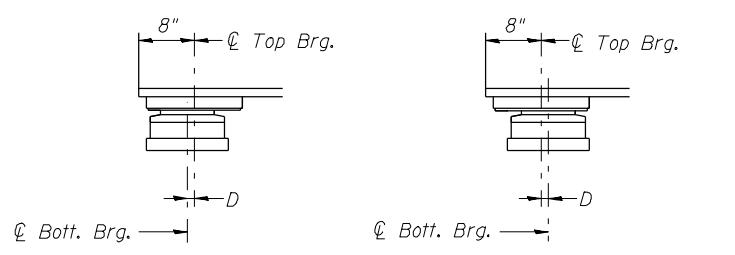
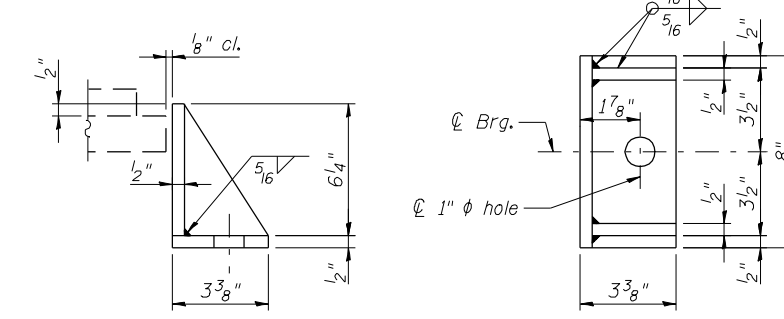
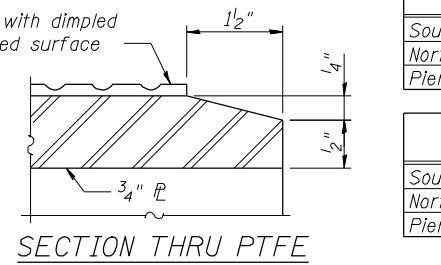
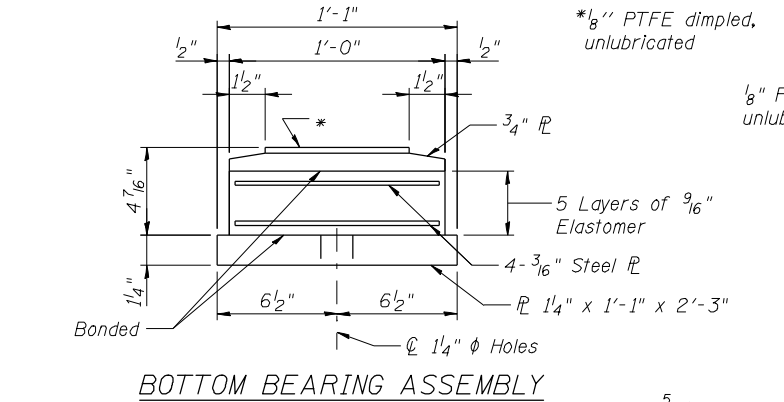
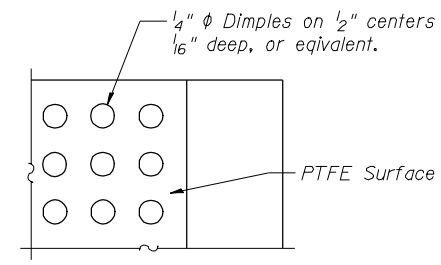
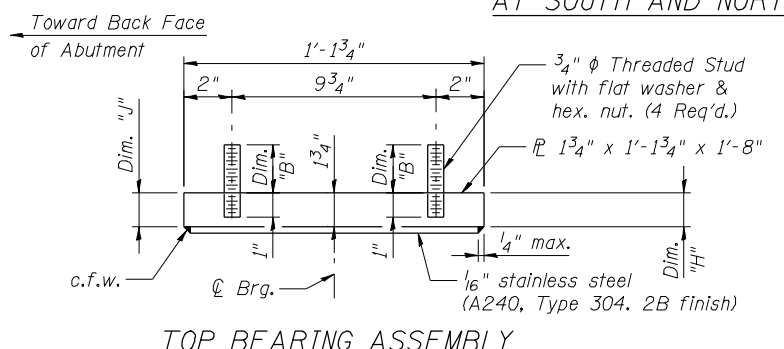


17-OCT-2012 16:30 P:\CX31000\700cadd\7095tr\FINAL\_PLANS\0820334-76848-035-Bearing\_Details.dgn



**TYPE II ELASTOMERIC EXPANSION BEARING AT SOUTH AND NORTH ABUTMENTS**

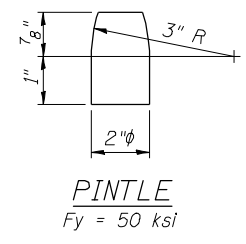


**SETTING ANCHOR BOLTS AT EXP. BRG.**  
 D=1/8" per each 100' of expansion for every 15° temp. change from the normal temp. of 50°F.

**FIXED BEARING AT PIER 1 AND PIER 2 (20 Required Total)**

**BEARING PLATE TABLE**

| Structure No.   | Plate "A"               | Plate "B"                  |
|-----------------|-------------------------|----------------------------|
| 082-0334 (N.B.) | 2 1/4" x 9" x 1'-7 1/2" | 2 3/4" x 1'-6" x 2'-7 1/4" |
| 082-0335 (S.B.) | 1 1/2" x 9" x 1'-3 1/2" | 2 3/4" x 1'-6" x 2'-3 1/4" |



**Notes:**  
 Anchor bolts shall be ASTM F1554 all-thread (or an Engineer-approved alternate material) of the grade(s) and diameter(s) specified. The corresponding specified grade of AASHTO M314 anchor bolts may be used in lieu of ASTM F1554.  
 Anchor bolts at fixed bearings may be either cast in place or installed in holes drilled after the supported member is in place.  
 Anchor bolts for Type II bearings shall be placed in holes drilled in the concrete through holes in the bottom bearing plate after members are in place. Side retainers shall be placed after bolts are installed.  
 Drilled and set anchor bolts shall be installed according to Article 521.06 of the Standard Specifications.  
 Side retainers and other steel members required for the elastomeric bearing assembly shall be included in the cost of Elastomeric Bearing Assembly, Type II.  
 The 1/8" PTFE sheet shall be bonded directly to the top steel plate with a two-component, medium viscosity epoxy resin, conforming to the requirements of the Federal Specification MMM-A-134, Type I. The bond agent shall be applied on the full area of the contact surfaces.  
 Bonding of 1/8" PTFE sheet during vulcanizing process will be permitted provided the process and method of adjusting assembly height is approved by the Engineer.  
 The structural steel of the bearing assembly shall conform to the requirements of AASHTO M270 Grade 50.  
 Two 1/8" adjusting shims shall be provided for each bearing in addition to all other plates or shims and placed as shown on bearing details.

**VARIABLE DIMENSIONS TABLES**

| Location       | Structure No. 082-0334 (N.B.) |          |          |          |          |           |           |          |          |  |
|----------------|-------------------------------|----------|----------|----------|----------|-----------|-----------|----------|----------|--|
|                | Dim. "A"                      | Dim. "B" | Dim. "C" | Dim. "D" | Dim. "E" | Dim. "F"  | Dim. "G"  | Dim. "H" | Dim. "J" |  |
| South Abutment | 1'-6"                         | 2 1/2"   | -        | -        | -        | -         | -         | 1 7/8"   | 1 5/8"   |  |
| North Abutment | 1'-2"                         | 2 5/8"   | -        | -        | -        | -         | -         | 1 3/4"   | 1 3/4"   |  |
| Pier 1 and 2   | -                             | -        | 5 1/4"   | 4 1/2"   | 2 1/4"   | 1'-0 1/8" | 2'-7 1/4" | -        | -        |  |

| Location       | Structure No. 082-0335 (S.B.) |          |          |          |          |          |           |          |          |  |
|----------------|-------------------------------|----------|----------|----------|----------|----------|-----------|----------|----------|--|
|                | Dim. "A"                      | Dim. "B" | Dim. "C" | Dim. "D" | Dim. "E" | Dim. "F" | Dim. "G"  | Dim. "H" | Dim. "J" |  |
| South Abutment | 1'-2"                         | 2 3/4"   | -        | -        | -        | -        | -         | 1 7/8"   | 1 5/8"   |  |
| North Abutment | 1'-2"                         | 2 1/2"   | -        | -        | -        | -        | -         | 1 3/4"   | 1 3/4"   |  |
| Pier 1 and 2   | -                             | -        | 4 1/4"   | 3 1/2"   | 1 1/2"   | 10 1/8"  | 2'-3 1/4" | -        | -        |  |

**PLANNED SHIMS TABLES**

| Location       | Structure No. 082-0334 (N.B.) |      |      |    |    |
|----------------|-------------------------------|------|------|----|----|
|                | G1                            | G2   | G3   | G4 | G5 |
| South Abutment | -                             | -    | 1/4" | -  | -  |
| Pier 1         | -                             | 1/4" | -    | -  | -  |
| Pier 2         | -                             | -    | 3/8" | -  | -  |
| North Abutment | -                             | -    | -    | -  | -  |

| Location       | Structure No. 082-0335 (S.B.) |    |      |    |    |
|----------------|-------------------------------|----|------|----|----|
|                | G1                            | G2 | G3   | G4 | G5 |
| South Abutment | -                             | -  | 5/8" | -  | -  |
| Pier 1         | -                             | -  | -    | -  | -  |
| Pier 2         | -                             | -  | 1/2" | -  | -  |
| North Abutment | -                             | -  | 1/8" | -  | -  |

**BILL OF MATERIAL**

| Item                                 | Unit | Total |
|--------------------------------------|------|-------|
| Elastomeric Bearing Assembly Type II | Each | 20    |
| Anchor Bolts, 3/4"                   | Each | 40    |
| Anchor Bolts, 2"                     | Each | 40    |