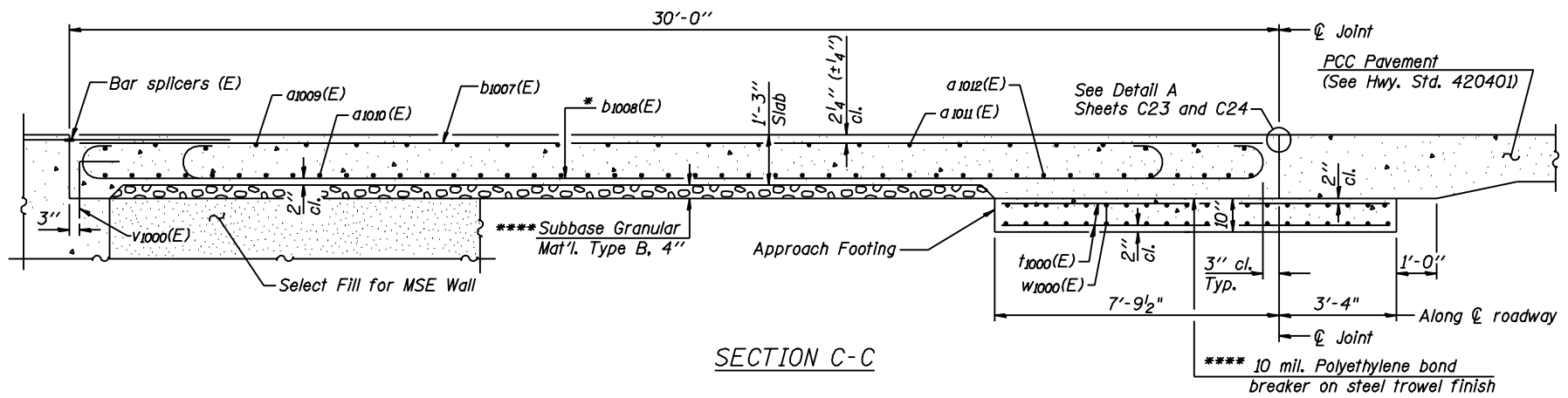
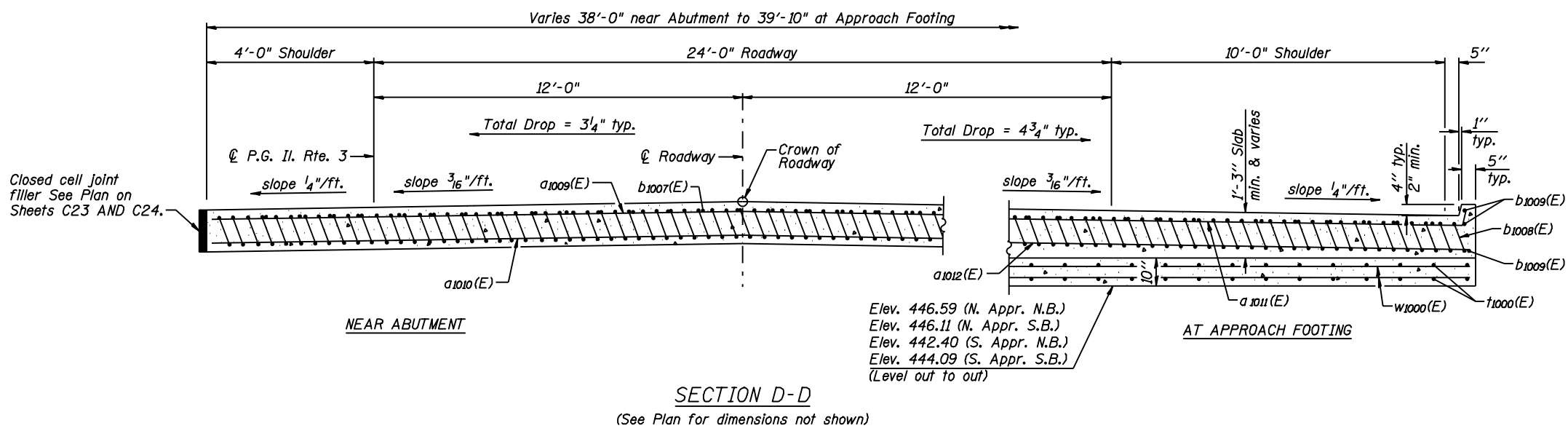


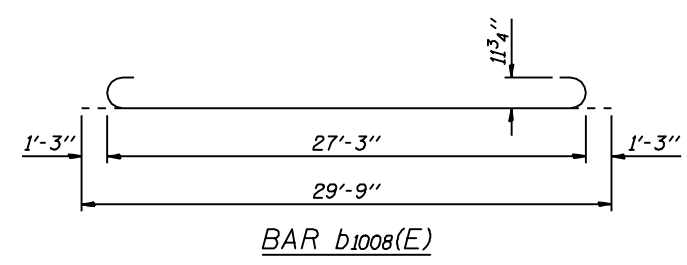
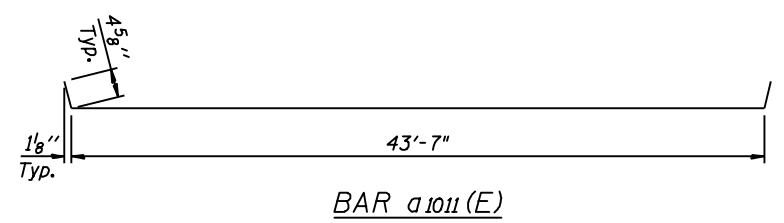
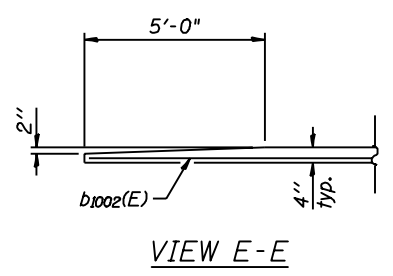
06-FEB-2013 P:\CX\31000\700cadd\709str\FINAL PLANS\0820334-76848-025-Appr Slab Details.dgn 12/34



Notes:
 See Sheets C23 and C24 for Detail A.
 Approach Slab shall be paid for as Concrete Superstructure.
 Approach Footing concrete shall be paid for as Concrete Structures.
 Reinforcement shall be paid for as Reinforcement Bars, Epoxy Coated.
 For w1000(E) bar details, see Sheets C36 thru C43.
 The approach footing maximum applied service bearing pressure (Qmax) = 2.0 ksf.
 For bar splicer details, see sheet C50.



* Tilt #9 b1008(E) bars as required to maintain clearance.
 **** Cost included with Concrete Superstructure.



**APPROACH SLAB
 BILL OF MATERIAL**

Bar	No.	Size	Length	Shape	
a1009(E)	13	#4	41'-11"	—	
a1010(E)	24	#5	41'-11"	—	
a1011(E)	12	#4	44'-5"	—	
a1012(E)	21	#5	43'-9"	—	
b1007(E)	31	#4	29'-8"	—	
b1008(E)	92	#9	29'-9"	—	
b1009(E)	6	#4	14'-4"	—	
t1000(E)	82	#4	10'-9"	—	
w1000(E)	40	#5	44'-0"	—	
Concrete Superstructure				Cu. Yd.	62.3
Concrete Structures				Cu. Yd.	13.8
Reinforcement Bars, Epoxy Coated				Pound	15,130

Note:
 Quantities shown are for one approach slab.
 Four approach slabs required.



USER NAME =	DESIGNED - N. KHATRI	REVISED - 02/06/13
PLOT DATE = 06-FEB-2013	CHECKED - S. HENNING	REVISED -
FILE NAME = 0820334-76848-025-Appr Slab Details.dgn	DRAWN - M. MEYER	REVISED -
	CHECKED - S. HENNING	REVISED -

**STATE OF ILLINOIS
 DEPARTMENT OF TRANSPORTATION**

**BRIDGE APPROACH SLAB DETAILS (N.B.) & (S.B.)
 STRUCTURE NO. 082-0334 (N.B.) & 082-0335 (S.B.)**

F.A.P. RTE.	SECTION	COUNTY	TOTAL SHEETS	SHEET NO.
788	520-1-2HVB	ST. CLAIR	237	82
CONTRACT NO. 76848			ILLINOIS FED. AID PROJECT	