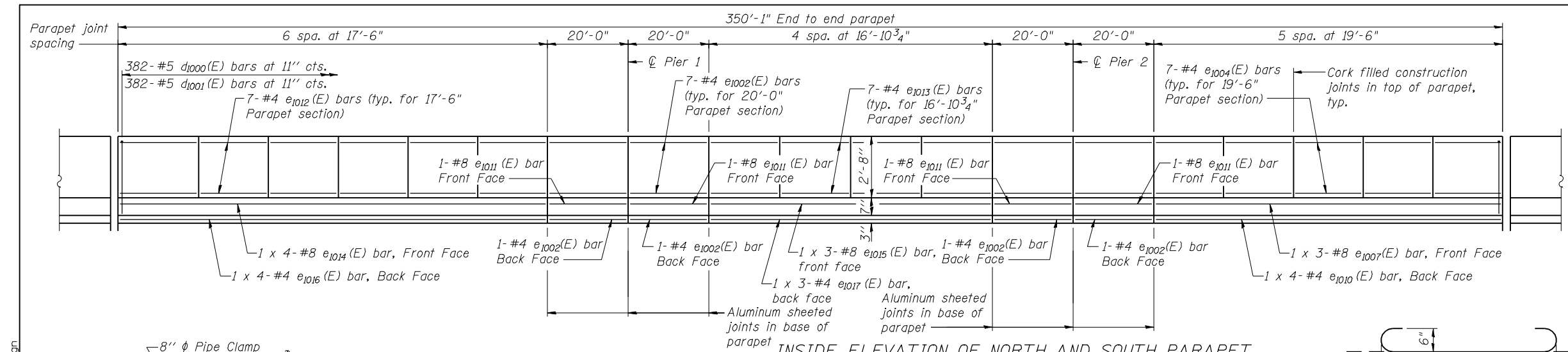


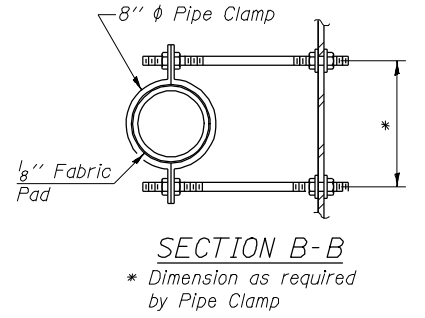
17-OCT-2012 P:\CX31000\100cadd\1095tr\FINAL PLANS\0820335-76848-019-Parapet_Details(SB).dgn



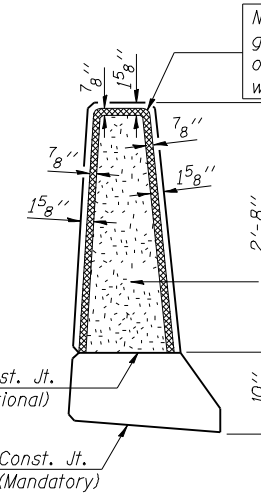
**SUPERSTRUCTURE
BILL OF MATERIAL**

Bar	No.	Size	Length	Shape
a1000(E)	793	#5	40'-6"	—
a1001(E)	496	#5	39'-10"	—
a1002(E)	1664	#6	6'-6"	—
a1003(E)	24	#6	10'-6"	—
a1004(E)	10	#6	45'-0"	—
a1006(E)	45	#5	41'-6"	—
a1007(E)	28	#5	40'-7"	—
a1008(E)	32	#5	1'-6"	—
b1004(E)	572	#5	29'-4"	—
b1005(E)	205	#6	34'-0"	—
b1006(E)	690	#5	25'-9"	—
d1000(E)	764	#5	6'-10"	—
d1001(E)	764	#5	8'-1"	—
e1002(E)	64	#4	19'-8"	—
e1004(E)	70	#4	19'-2"	—
e1007(E)	6	#8	35'-10"	—
e1010(E)	8	#4	25'-10"	—
e1011(E)	8	#8	19'-8"	—
e1012(E)	84	#4	17'-2"	—
e1013(E)	56	#4	16'-7"	—
e1014(E)	8	#8	30'-1"	—
e1015(E)	6	#8	25'-11"	—
e1016(E)	8	#4	27'-8"	—
e1017(E)	6	#4	23'-10"	—
x1000(E)	92	#5	6'-8"	—
Reinforcement Bars, Epoxy Coated		Pound	139370	
Concrete Superstructure		Cu. Yds.	465.6	

Bars indicated thus 1 x 5 -#8 etc. indicates 1 line of bars with 5 lengths per line.



MINIMUM BAR LAP
(Parapet)
#4 bar = 2'-0"
#8 bar = 5'-2"



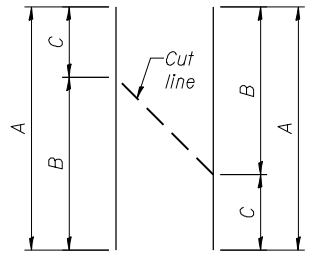
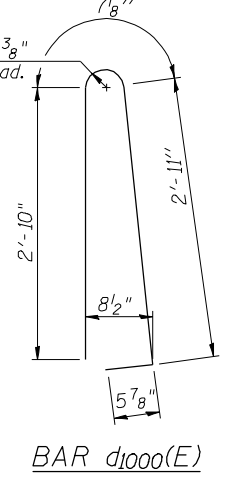
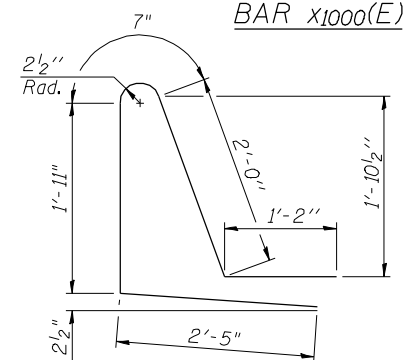
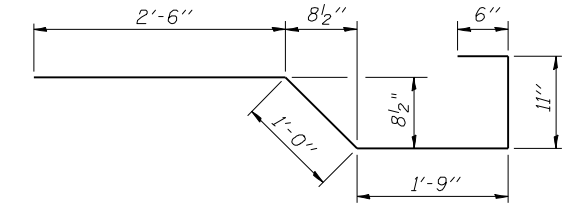
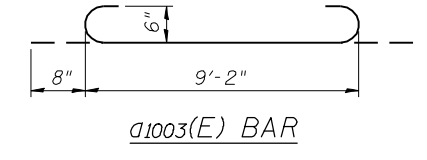
Non-staining gray one component non-sag elastomeric gun grade polyurethane sealant meeting the requirements of ASTM C-920, Type S, Grade NS, Class 25, use T with a 5/8" backer rod.

1/2" Preformed Self-Expanding Cork Joint Filler according to Article 1051.07 of the Std. Spec. Cost included with Concrete Superstructure.

Const. Jts. at Piers 1/8" Aluminum sheet ASTM B 209 alloy 3003-H14 coated to minimize reaction with wet concrete. Cost included with Concrete Superstructure

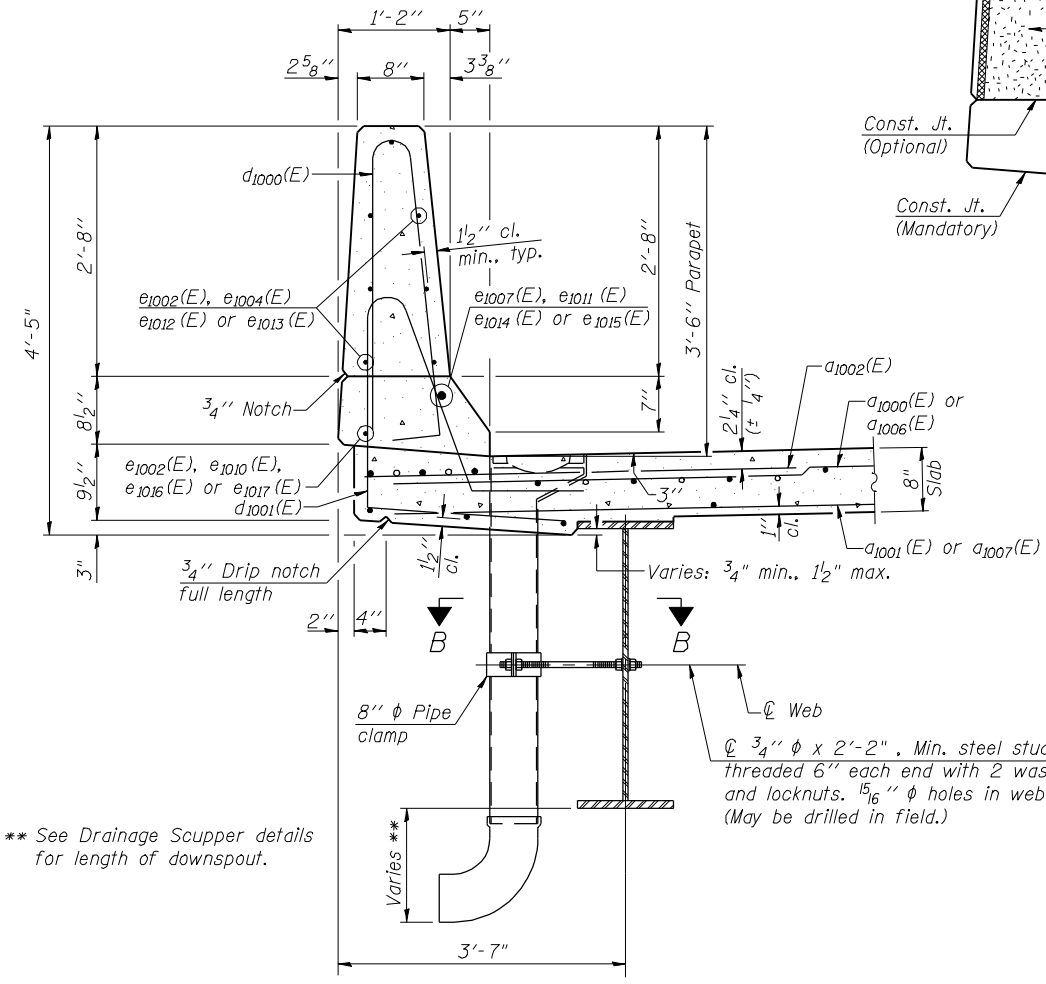
PARAPET JOINT DETAILS

Notes:
Galvanize clamping device according to AASHTO M232. Cost of clamping device and inserts is included with Drainage Scuppers, DS-11.

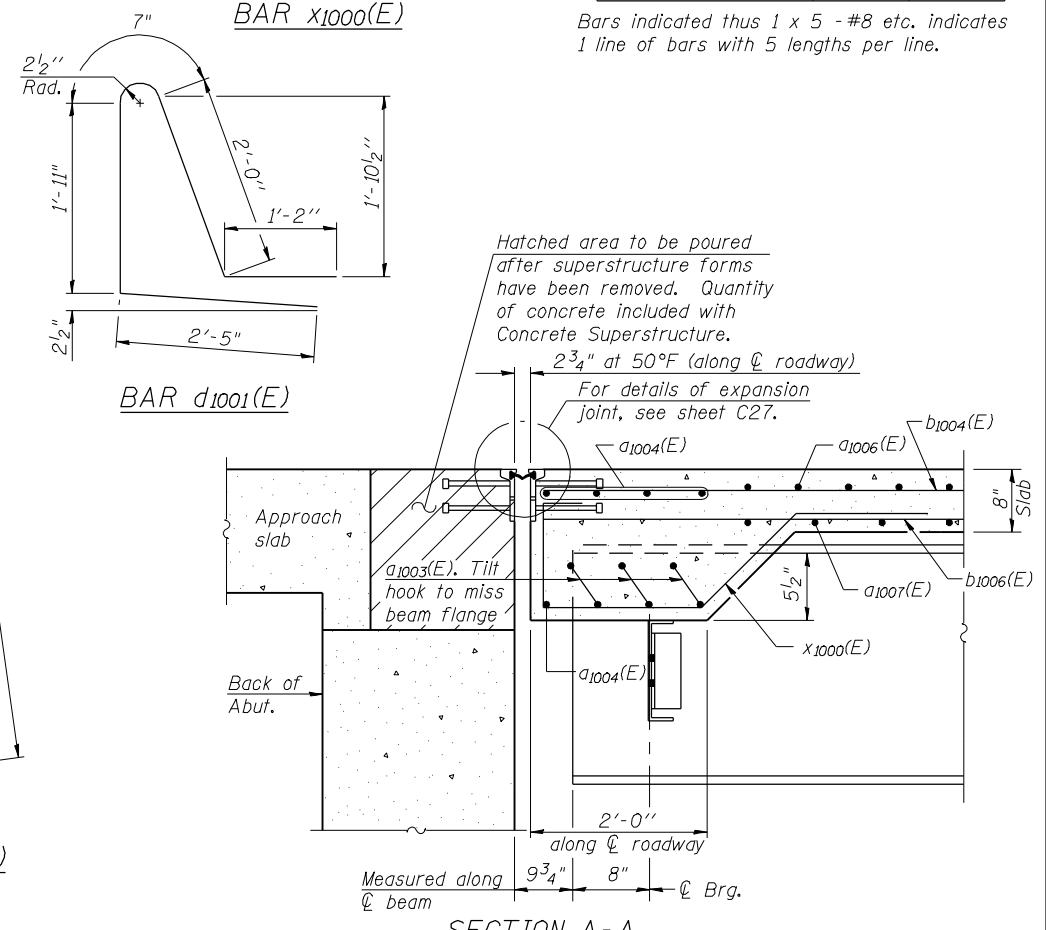


BAR a1006(E) AND a1007(E)

Bar	A	B	C
a1006(E)	41'-6"	39'-6"	2'-0"
a1007(E)	40'-7"	38'-9"	1'-10"



SECTION THRU PARAPET



SECTION A-A



USER NAME =	DESIGNED - N. KHATRI	REVISED -
PLOT DATE = 17-OCT-2012	CHECKED - S. HENNING	REVISED -
	DRAWN - E. BAZZELL	REVISED -
	CHECKED - J. SMITH	REVISED -

**STATE OF ILLINOIS
DEPARTMENT OF TRANSPORTATION**

**PARAPET DETAILS - S.B.
STRUCTURE NO. 082-0334 (N.B.) & 082-0335 (S.B.)**

F.A.P. RTE.	SECTION	COUNTY	TOTAL SHEETS	SHEET NO.
788	520-1-2HVB	ST. CLAIR	237	76
CONTRACT NO. 76848				

FILE NAME = 0820335-76848-019-Parapet_Details(SB).dgn

SHEET NO. C19 OF 76 SHEETS

ILLINOIS FED. AID PROJECT