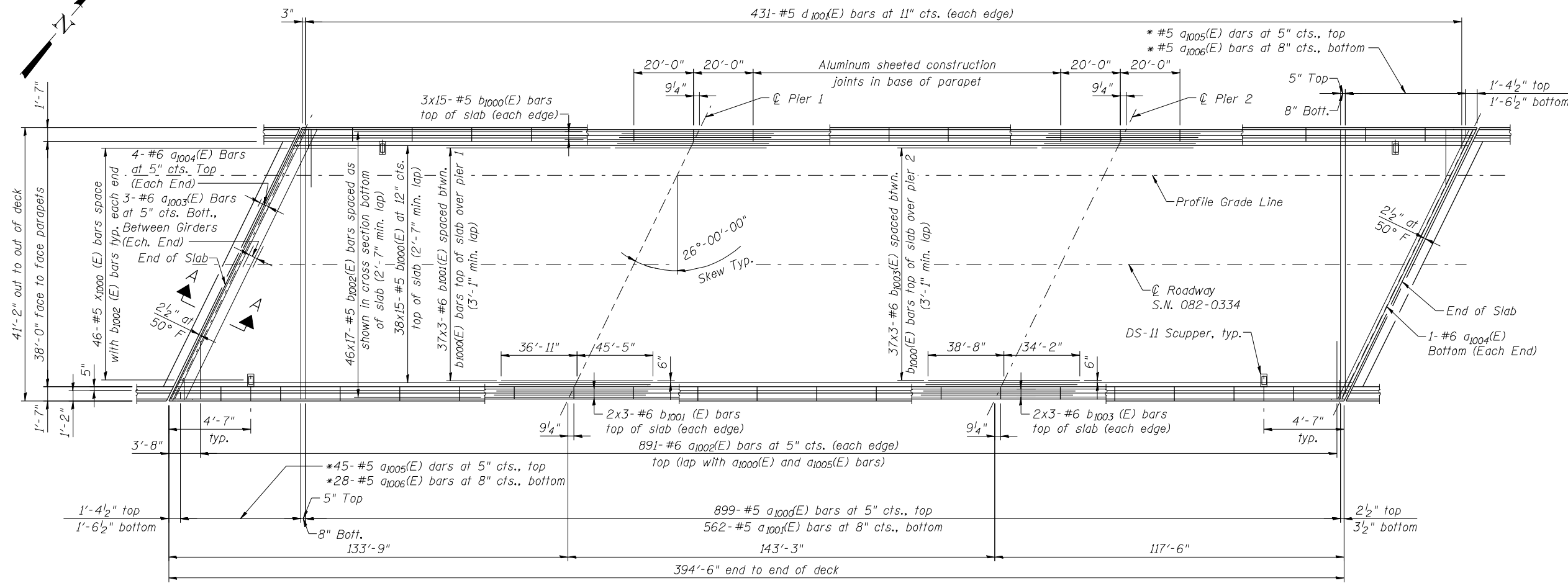
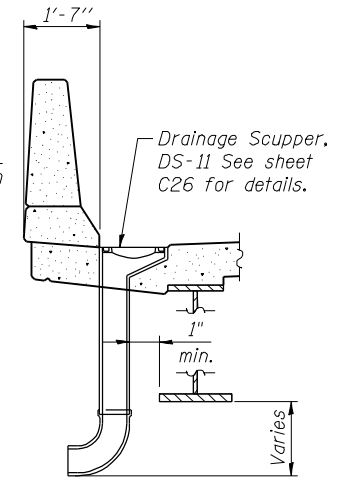


17-OCT-2012 16:24 P:\CX\31000\100cadd\709stf\FINAL_PLANS\0820334-76848-016-Superstructure(NB).dgn



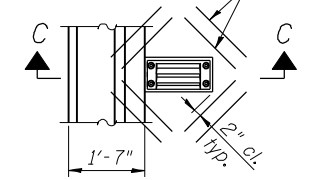
PLAN

* Order a₁₀₀₅(E) & a₁₀₀₆(E) bars full length. Cut bars in field to fit skew and use remainder of bars at other end of deck.



SECTION C-C

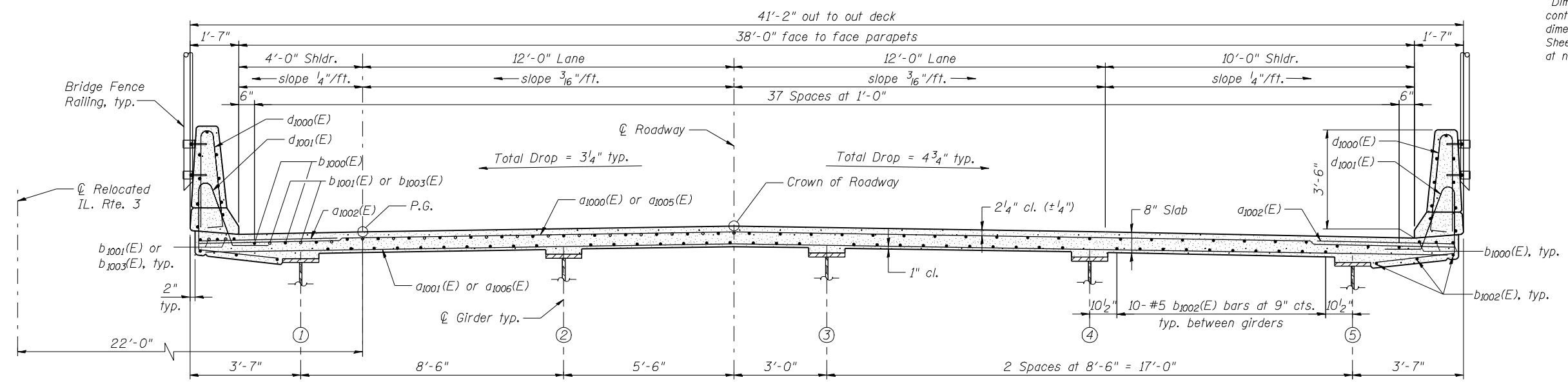
1-#5 a₁₀₀₈(E) bars at 4" cts. (1'-6" long) tied to bottom of top reinforcement mat typ.



PLAN OF SCUPPER

Note: Cut longitudinal reinforcement to clear drainage scuppers.

Notes:
 See sheet C18 for superstructure details and bill of materials. Bars indicated thus 41x15-#5 etc. indicates 41 lines of bars with 15 lengths per line.
 See sheet C18 for parapet reinforcing and Section A-A. Dimensions are based on a Rolled Rail Strip Seal Joint. If the contractor elects to use the Welded Rail Strip Seal Joint, deck dimensions may require adjustments to satisfy the details on Base Sheet EJ-SSJ (Sheet C27). Required modifications shall be made at no additional costs to the State.



CROSS SECTION
(Looking Ahead Station)



| | | |
|-------------------------|----------------------|-----------|
| USER NAME = | DESIGNED - N. KHATRI | REVISED - |
| PLOT DATE = 17-OCT-2012 | CHECKED - S. HENNING | REVISED - |
| | DRAWN - E. BAZZELL | REVISED - |
| | CHECKED - J. SMITH | REVISED - |

**STATE OF ILLINOIS
DEPARTMENT OF TRANSPORTATION**

**SUPERSTRUCTURE PLAN AND SECTION - N.B.
STRUCTURE NO. 082-0334 (N.B.) & 082-0335 (S.B.)**

| | | | | |
|--------------------|------------|-----------|--------------|-----------|
| F.A.P. RTE. | SECTION | COUNTY | TOTAL SHEETS | SHEET NO. |
| 788 | 520-1-2HVB | ST. CLAIR | 237 | 73 |
| CONTRACT NO. 76848 | | | | |

SHEET NO. C16 OF 76 SHEETS

ILLINOIS FED. AID PROJECT

FILE NAME = 0820334-76848-016-Superstructure(NB).dgn