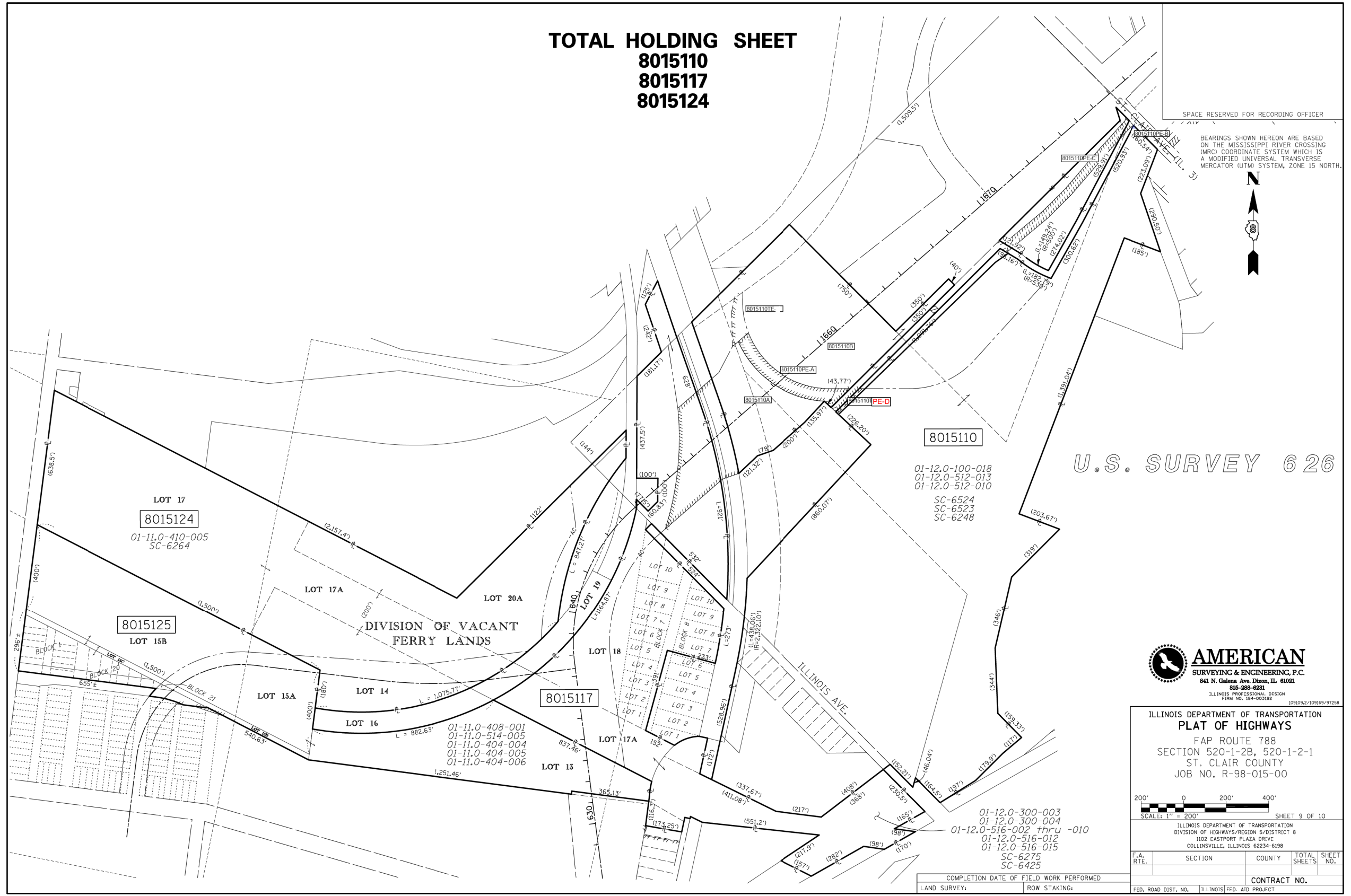


TOTAL HOLDING SHEET
8015110
8015117
8015124



SPACE RESERVED FOR RECORDING OFFICER

BEARINGS SHOWN HEREON ARE BASED ON THE MISSISSIPPI RIVER CROSSING (MRC) COORDINATE SYSTEM WHICH IS A MODIFIED UNIVERSAL TRANSVERSE MERCATOR (UTM) SYSTEM, ZONE 15 NORTH.



U.S. SURVEY 626

8015110
 01-12.0-100-018
 01-12.0-512-013
 01-12.0-512-010
 SC-6524
 SC-6523
 SC-6248

8015117
 01-11.0-408-001
 01-11.0-514-005
 01-11.0-404-004
 01-11.0-404-005
 01-11.0-404-006

01-12.0-300-003
 01-12.0-300-004
 01-12.0-516-002 thru -010
 01-12.0-516-012
 01-12.0-516-015
 SC-6275
 SC-6425



ILLINOIS DEPARTMENT OF TRANSPORTATION PLAT OF HIGHWAYS FAP ROUTE 788 SECTION 520-1-2B, 520-1-2-1 ST. CLAIR COUNTY JOB NO. R-98-015-00			
SCALE: 1" = 200'			
SHEET 9 OF 10			
ILLINOIS DEPARTMENT OF TRANSPORTATION DIVISION OF HIGHWAYS/REGION 5/DISTRICT 8 1102 EASTPORT PLAZA DRIVE COLLINGSVILLE, ILLINOIS 62234-6198			
F.A. RTE.	SECTION	COUNTY	TOTAL SHEETS
			SHEET NO.
COMPLETION DATE OF FIELD WORK PERFORMED			CONTRACT NO.
LAND SURVEY:	ROW STAKING:	FED. ROAD DIST. NO.	ILLINOIS FED. AID PROJECT

FAP ROUTE 788 CONSTRUCTION SECTION 520-1-2B, 520-1-2-1 ST. CLAIR COUNTY JOB # R-98-015-00

PART OF U.S. SURVEY 626, T. 2 N., R. 10 W. OF THE 3RD P.M.

REV: 1/27/12

FILE NAME =	USER NAME = *USER*	DESIGNED - JJO	REVISED -	STATE OF ILLINOIS DEPARTMENT OF TRANSPORTATION	R.O.W. PLAT				F.A.P. RTE.	SECTION	COUNTY	TOTAL SHEETS	SHEET NO.
*FILE#		DRAWN - JJO	REVISED -						788	520-1-2HVB, 520-1-2HVB-1	ST. CLAIR	237	46
	PLOT SCALE = *SCALE*	CHECKED - PJM	REVISED -						CONTRACT NO. 76848				
	PLOT DATE = *DATE*	DATE - 10/18/12	REVISED -		SCALE:	SHEET NO.	OF SHEETS	STA.	TO STA.	ILLINOIS FED. AID PROJECT			