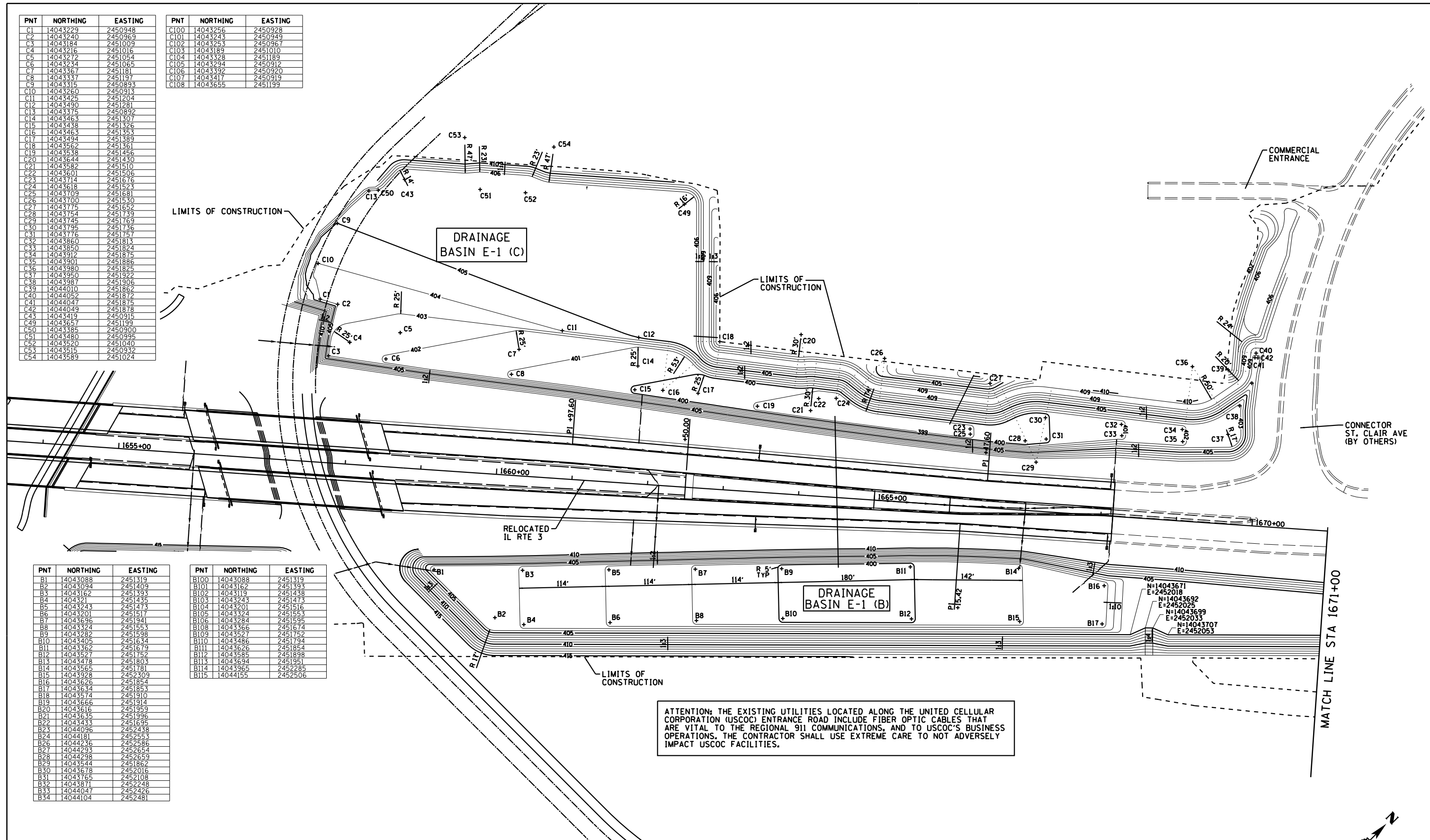


PNT	NORTHING	EASTING
C1	14043229	2450948
C2	14043240	2450969
C3	14043184	2451009
C4	14043216	2451016
C5	14043272	2451054
C6	14043234	2451065
C7	14043367	2451181
C8	14043337	2451197
C9	14043315	2450893
C10	14043260	2450913
C11	14043425	2451204
C12	14043490	2451281
C13	14043375	2450892
C14	14043463	2451307
C15	14043438	2451326
C16	14043463	2451353
C17	14043494	2451389
C18	14043562	2451361
C19	14043538	2451456
C20	14043644	2451430
C21	14043582	2451510
C22	14043601	2451506
C23	14043714	2451676
C24	14043618	2451523
C25	14043709	2451681
C26	14043700	2451530
C27	14043775	2451652
C28	14043754	2451739
C29	14043745	2451769
C30	14043795	2451736
C31	14043776	2451757
C32	14043860	2451813
C33	14043850	2451824
C34	14043912	2451875
C35	14043901	2451886
C36	14043980	2451825
C37	14043950	2451922
C38	14043987	2451906
C39	14044010	2451862
C40	14044052	2451872
C41	14044047	2451875
C42	14044049	2451878
C43	14043419	2450915
C49	14043657	2451199
C50	14043385	2450900
C51	14043480	2450995
C52	14043520	2451040
C53	14043515	2450932
C54	14043589	2451024

PNT	NORTHING	EASTING
C100	14043256	2450928
C101	14043243	2450949
C102	14043253	2450967
C103	14043189	2451010
C104	14043328	2451189
C105	14043294	2450912
C106	14043392	2450920
C107	14043417	2450919
C108	14043655	2451199

PNT	NORTHING	EASTING
B1	14043088	2451319
B2	14043094	2451409
B3	14043162	2451393
B4	14043321	2451435
B5	14043243	2451473
B6	14043201	2451516
B7	14043296	2451941
B8	14043324	2451553
B9	14043282	2451598
B10	14043405	2451634
B11	14043362	2451679
B12	14043521	2451752
B13	14043478	2451803
B14	14043565	2451781
B15	14043928	2452309
B16	14043626	2451854
B17	14043634	2451853
B18	14043574	2451910
B19	14043666	2451914
B20	14043616	2451959
B21	14043635	2451996
B22	14043433	2451695
B23	14044096	2452438
B24	14044181	2452553
B26	14044236	2452586
B27	14044295	2452654
B28	14044298	2452859
B29	14043544	2451862
B30	14043678	2452016
B31	14043765	2452108
B32	14043871	2452248
B33	14044047	2452426
B34	14044104	2452481

PNT	NORTHING	EASTING
B100	14043088	2451319
B101	14043162	2451393
B102	14043119	2451438
B103	14043243	2451473
B104	14043201	2451516
B105	14043324	2451553
B106	14043284	2451595
B108	14043366	2451674
B109	14043527	2451752
B110	14043486	2451794
B111	14043626	2451854
B112	14043595	2451898
B113	14043694	2451951
B114	14043965	2452285
B115	14044155	2452506



ATTENTION: THE EXISTING UTILITIES LOCATED ALONG THE UNITED CELLULAR CORPORATION (USCOC) ENTRANCE ROAD INCLUDE FIBER OPTIC CABLES THAT ARE VITAL TO THE REGIONAL 911 COMMUNICATIONS, AND TO USCOC'S BUSINESS OPERATIONS. THE CONTRACTOR SHALL USE EXTREME CARE TO NOT ADVERSELY IMPACT USCOC FACILITIES.



USER NAME = *USER*	DESIGNED - JJO	REVISED - 02/06/13
PLOT SCALE = *SCALE*	DRAWN - JJO	REVISED - 03/15/13
PLOT DATE = *DATE*	CHECKED - PJM	REVISED -
	DATE -	REVISED -

STATE OF ILLINOIS
DEPARTMENT OF TRANSPORTATION

DRAINAGE BASIN E-1 LAYOUT
(EXCAVATION)

SCALE: 1"=60' SHEET NO. OF SHEETS STA. TO STA.

F.A.P. RTE.	SECTION	COUNTY	TOTAL SHEETS	SHEET NO.
788	520-1-2HVB, 520-1-2HVB-1	ST. CLAIR	237	39A

CONTRACT NO. 76848

ILLINOIS FED. AID PROJECT