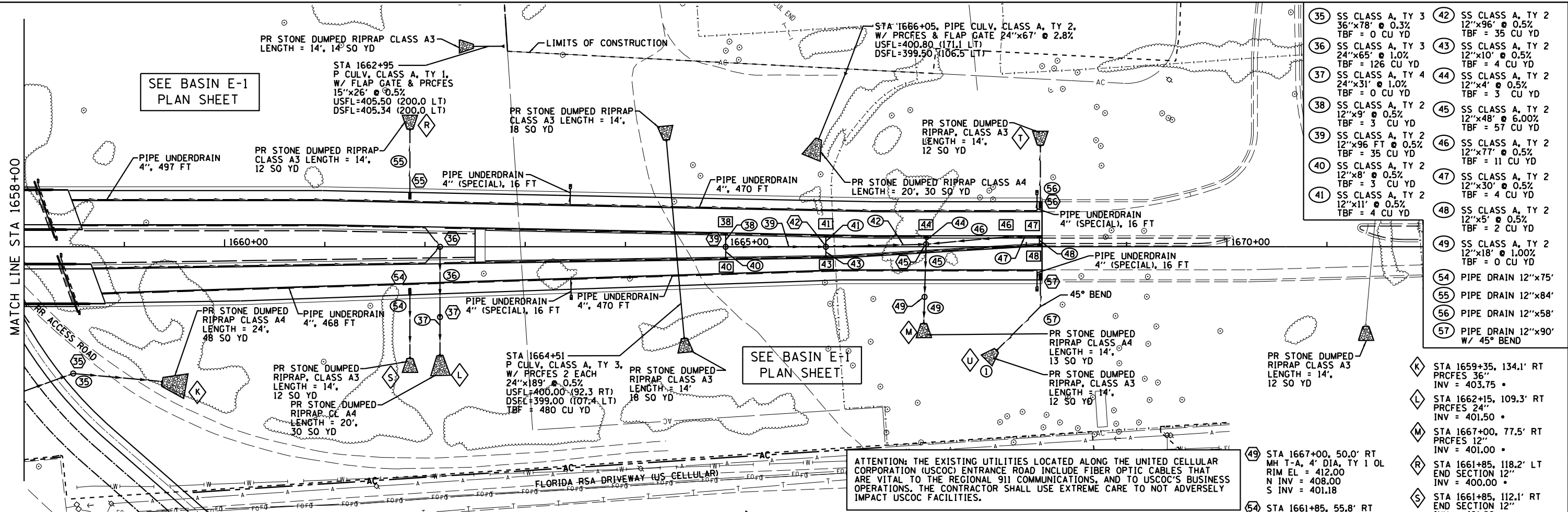


DATE	
BY	
PLAN	
SURVEYED	
PLOTTED	
GRADES CHECKED	
STRUCTURE NOTATIONS OK'D	
NOTE BOOK NO.	
FILE NAME	

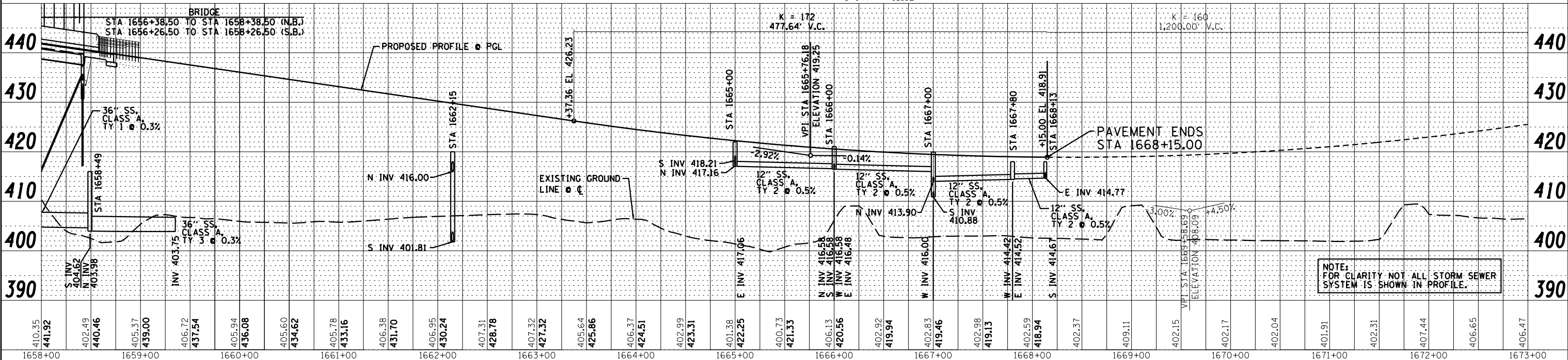
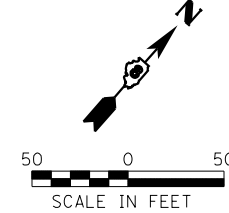
DATE	
BY	
PROFILE	
SURVEYED	
PLOTTED	
GRADES CHECKED	
STRUCTURE NOTATIONS OK'D	
NOTE BOOK NO.	
FILE NAME	



- 35 SS CLASS A, TY 3 36"x78" @ 0.3% TBF = 0 CU YD
- 36 SS CLASS A, TY 3 24"x65" @ 1.0% TBF = 126 CU YD
- 37 SS CLASS A, TY 4 24"x31" @ 1.0% TBF = 0 CU YD
- 38 SS CLASS A, TY 2 12"x9" @ 0.5% TBF = 3 CU YD
- 39 SS CLASS A, TY 2 12"x96 FT @ 0.5% TBF = 35 CU YD
- 40 SS CLASS A, TY 2 12"x8" @ 0.5% TBF = 3 CU YD
- 41 SS CLASS A, TY 2 12"x11" @ 0.5% TBF = 4 CU YD
- 42 SS CLASS A, TY 2 12"x96" @ 0.5% TBF = 35 CU YD
- 43 SS CLASS A, TY 2 12"x10" @ 0.5% TBF = 4 CU YD
- 44 SS CLASS A, TY 2 12"x4" @ 0.5% TBF = 3 CU YD
- 45 SS CLASS A, TY 2 12"x48" @ 6.00% TBF = 57 CU YD
- 46 SS CLASS A, TY 2 12"x77" @ 0.5% TBF = 11 CU YD
- 47 SS CLASS A, TY 2 12"x30" @ 0.5% TBF = 4 CU YD
- 48 SS CLASS A, TY 2 12"x5" @ 0.5% TBF = 2 CU YD
- 49 SS CLASS A, TY 2 12"x18" @ 1.00% TBF = 0 CU YD
- 54 PIPE DRAIN 12"x75'
- 55 PIPE DRAIN 12"x84'
- 56 PIPE DRAIN 12"x58'
- 57 PIPE DRAIN 12"x90' W/ 45° BEND

- 35 STA 1658+49, 126.3' RT MH T-A 5' DIA, TY 1 FR&OLID RIM EL = 416.00 N INV = 403.98 S INV = 404.62
- 36 STA 1662+15, 0.0' LT MH T-A 5' DIA, SP F&G RIM EL = 427.34 S INV = 416.66
- 37 STA 1662+15, 70.0' RT MH T-A 5' DIA, TY 1 CLID RIM EL = 420.00 N INV = 416.00 S INV = 401.81
- 38 STA 1665+00, 11.4' LT INLET T-B, TY 3 F&G TC EL = 422.63 S INV = 417.21
- 39 STA 1665+00, 0.0' LT MH-TA 4' DIA, TY 1 OL RIM EL = 422.75 N INV = 417.16 E INV = 417.06 S INV = 418.21
- 40 STA 1665+00, 10.1' RT INLET T-B, TY 3 F&G TC EL = 422.63 N INV = 418.25
- 41 STA 1666+00, 9.4' LT INLET T-B, TY 3 F&G RIM EL = 420.94 TC EL = 420.94 S INV = 416.61
- 42 STA 1666+00, 0.0' LT MH T-A 4' DIA, TY 1 OL RIM EL = 421.06 N INV = 416.58 E INV = 416.48 S INV = 416.58 W INV = 416.58
- 43 STA 1666+00, 8.6' RT INLET T-B, TY 3 F&G TC EL = 420.94 N INV = 416.61
- 44 STA 1667+00, 8.4' LT INLET T-B, TY 3 F&G TC EL = 419.84 S INV = 413.92
- 45 STA 1667+00, 2.5' LT MH T-A 4' DIA, TY 1 OL RIM EL = 419.96 N INV = 413.90 S INV = 410.88 E INV = 414.02
- 46 STA 1667+80, 8.4' LT INLET T-B, TY 3 F&G TC EL = 419.11 E INV = 414.52 W INV = 414.42
- 47 STA 1668+13, 8.4' LT INLET T-B, TY 3 F&G TC EL = 419.02 E INV = 414.77 S INV = 414.67
- 48 STA 1668+13, 1.4' LT INLET T-B, TY 3 F&G TC EL = 419.02 N INV = 414.80
- 49 STA 1667+00, 50.0' RT MH T-A, 4' DIA, TY 1 OL RIM EL = 412.00 N INV = 408.00 S INV = 401.18
- 54 STA 1661+85, 55.8' RT TYPE F INLET BOX, STANDARD 610001
- 55 STA 1661+85, 54.3' LT TYPE F INLET BOX, STANDARD 610001
- 56 STA 1668+14, 45.0' LT TYPE F INLET BOX, STANDARD 610001
- 57 STA 1668+14, 33' RT TYPE F INLET BOX, STANDARD 610001

ATTENTION: THE EXISTING UTILITIES LOCATED ALONG THE UNITED CELLULAR CORPORATION (USCOC) ENTRANCE ROAD INCLUDE FIBER OPTIC CABLES THAT ARE VITAL TO THE REGIONAL 911 COMMUNICATIONS, AND TO USCOC'S BUSINESS OPERATIONS. THE CONTRACTOR SHALL USE EXTREME CARE TO NOT ADVERSELY IMPACT USCOC FACILITIES.



NOTE: FOR CLARITY NOT ALL STORM SEWER SYSTEM IS SHOWN IN PROFILE.

**Farnsworth GROUP, INC.**  
2705 McGraw Drive  
Bloomington, Illinois 61704  
309/663-8435, 309/663-1571 fax

USER NAME = dmeyer	DESIGNED - JJO	REVISED - 02/06/13
	DRAWN - JJO	REVISED - 03/15/13
PLOT SCALE = 100.0000' / 1"	CHECKED - PJM	REVISED -
PLOT DATE = 3/15/2013	DATE - 12/10/12	REVISED -

STATE OF ILLINOIS  
DEPARTMENT OF TRANSPORTATION

DRAINAGE PLAN & PROFILE

SCALE: SHEET NO. OF SHEETS STA. TO STA.

F.A.P. R.T.E.	SECTION	COUNTY	TOTAL SHEETS	SHEET NO.
788	520-1-2HVB, 520-1-2HVB-1	ST. CLAIR	237	34
CONTRACT NO. 76848				
ILLINOIS FED. AID PROJECT				