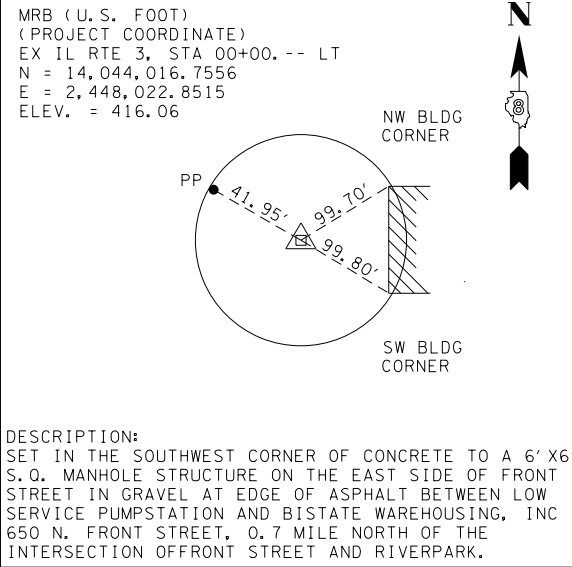
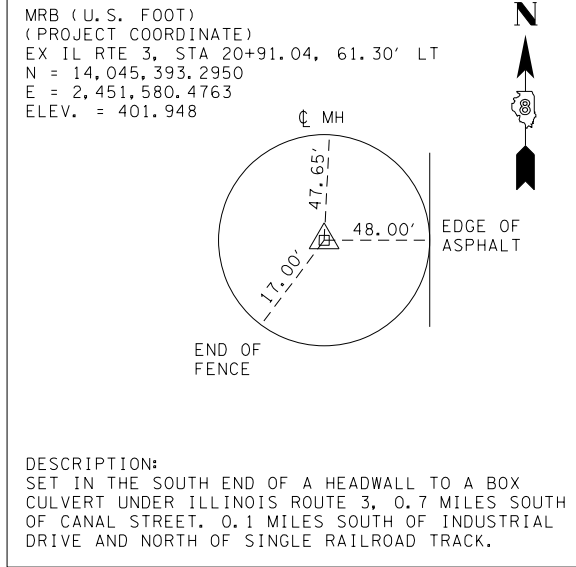


MONUMENT #8
CP#200

MONUMENT NO. 7



MONUMENT NO. 8



COORDINATE SYSTEM

THE MISSISSIPPI RIVER BRIDGE (MRB) COORDINATE SYSTEM IS BASED ON A MODIFIED UNIVERSAL TRANSVERSE MERCATOR (UTM) SYSTEM. THE MRB PROJECT COORDINATE SYSTEM HAS CONVERTED FROM UTM ZONE 15 NORTH BY AN AVERAGE PROJECTION FACTOR AND ALSO CONVERTED FROM METERS TO U.S. SURVEY FEET.

HORIZONTAL DATUM

THE DATUM USED IS NAD-83
THE MRB PROJECT COORDINATES HAVE BEEN TRANSFORMED FROM UTM BY USING AN AVERAGE PROJECTION FACTOR IN THE PROJECT AREA.

AVERAGE GRID FACTOR = 1.000339495
PROJECTION FACTOR = 1/GRID = 0.999660620

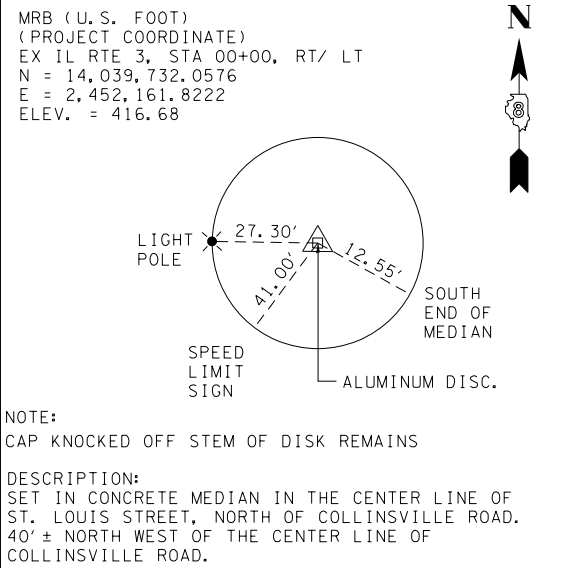
THE BASE POINT THAT ALL UTM COORDINATES WERE SCALED FROM WAS THE CENTRALLY LOCATED MONUMENT NO. 10. EACH VECTOR FROM MONUMENT NO. 10 TO ALL OTHER MONUMENTS WAS MULTIPLIED BY THE PROJECTION FACTOR TO CALCULATE A SURFACE VECTOR AND THEN THIS SURFACE VECTOR WAS USED TO CALCULATE THE SURFACE COORDINATE (MRB). (NOTE: 1 METER EQUALS 3.28083333 U.S. SURVEY FOOT).

UTM ZONE 15 NORTH (METERS) = PROJECTED GRID COORDINATES
MRB (FEET) = PROJECT SURFACE COORDINATES

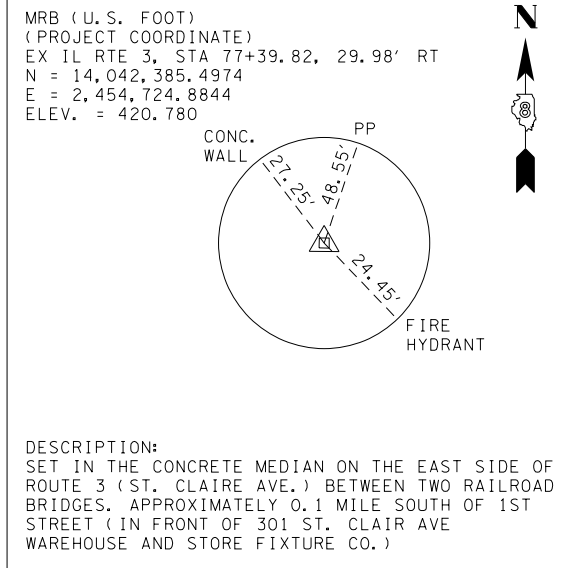
VERTICAL DATUM

THE DATUM USED IS NAVD 1988

MONUMENT NO. 9



MONUMENT NO. 10



PT STA 1699+77.51
N 25° 34' 21" W

PR CURVE RTE3-10
PI STA = 1694+63.93
Δ = 74° 28' 55" (LT)
D = 6° 01' 19"
R = 951.44'
T = 723.26'
L = 1,236.83'
E = 243.69'
e = BY OTHERS
T.R. = BY OTHERS
S.E. RUN = BY OTHERS
P.C. STA = 1687+40.68
P.T. STA = 1699+77.51

| ALIGNMENT COORDINATES - RELOCATED IL RTE 3 | | | |
|--|------------|---------------|--------------|
| STATION | NORTHING | EASTING | |
| PC | 613+00.92 | 14039337.3396 | 2449941.8130 |
| PI | 620+50.65 | 14039971.6573 | 2450341.4813 |
| PT | 627+40.27 | 14040715.1960 | 2450245.3362 |
| PC | 637+54.80 | 14041721.3548 | 2450115.2322 |
| PI | 642+04.05 | 14042166.8927 | 2450057.6208 |
| PT | 645+79.87 | 14042462.1608 | 2450396.2058 |
| POT | 1651+79.35 | 14042690.1546 | 2450657.6471 |
| PC | 1687+40.68 | 14045030.8377 | 2453341.7169 |
| PI | 1694+63.93 | 14045506.1999 | 2453886.8164 |
| PT | 1699+77.51 | 14046158.6071 | 2453574.6187 |

| ALIGNMENT COORDINATES - RIVER PARK DRIVE CONNECTOR | | | |
|--|----------|---------------|--------------|
| STATION | NORTHING | EASTING | |
| POT | 7+41.77 | 14039703.2264 | 2449725.1400 |
| PC | 9+61.03 | 14039912.1259 | 2449791.7411 |
| PI | 11+76.99 | 14040117.8849 | 2449857.3409 |
| PT | 13+35.86 | 14040122.0301 | 2450073.2643 |
| POT | 15+00.00 | 14040125.1806 | 2450237.3755 |

| ALIGNMENT COORDINATES - PR MISSOURI AVE | | | |
|---|----------|---------------|--------------|
| STATION | NORTHING | EASTING | |
| POT | 3+17.75 | 14040909.0744 | 2448002.0571 |
| PC | 6+94.56 | 14041282.9978 | 2448048.6307 |
| PI | 11+92.09 | 14041776.7073 | 2448110.1241 |
| PT | 14+77.48 | 14041717.6652 | 2448604.1328 |
| PC | 20+80.60 | 14041646.0911 | 2449202.9964 |
| PI | 23+29.42 | 14041616.5634 | 2449450.0563 |
| PT | 25+75.70 | 14041648.4718 | 2449696.8200 |
| POT | 30+00.00 | 14041702.8845 | 2450117.6205 |

| ALIGNMENT COORDINATES - EX IL RTE 3 | | | |
|-------------------------------------|----------|---------------|--------------|
| STATION | NORTHING | EASTING | |
| PC | 83+34.12 | 14042787.9481 | 2454286.5585 |
| PI | 83+86.24 | 14042825.0872 | 2454249.9910 |
| PRC | 84+37.98 | 14042853.8847 | 2454206.5526 |
| PI | 84+88.85 | 14042881.9915 | 2454164.1558 |
| PT | 85+39.37 | 14042918.0631 | 2454128.2863 |

MATCH LINE STA 1674+00

RELOCATED IL RTE 3
STA 1678+06.67=
EX IL RTE 3 STA 106+53.21

CONTRACT 76848
IMPROVEMENT ENDS
STA 1677+55.00
(CLEARING/GRADING)

MATCH LINE STA 103+00

| | | | |
|--|--------------------|----------------|-----------|
| FILE NAME = P:\DOT-DB\2010\0100134.27 IL3 Final Plans\Contract 76848\Dgn\0876848-shr-ATB.dgn | USER NAME = dmeyer | DESIGNED - JJO | REVISED - |
| PLOT SCALE = 200.0000' / in. | CHECKED - PJM | DRAWN - JJO | REVISED - |
| PLOT DATE = 10/18/2012 | DATE - 10/18/12 | | REVISED - |

STATE OF ILLINOIS
DEPARTMENT OF TRANSPORTATION

ALIGNMENTS, TIES, AND BENCHMARKS

SCALE: SHEET NO. OF SHEETS STA. 1674+00 TO STA. 1701+00

| F.A.P. RTE. | SECTION | COUNTY | TOTAL SHEETS | SHEET NO. |
|---------------------------|--------------------------|-----------|--------------|-----------|
| 788 | 520-1-2HVB, 520-1-2HVB-1 | ST. CLAIR | 237 | 21 |
| CONTRACT NO. 76848 | | | | |
| ILLINOIS FED. AID PROJECT | | | | |