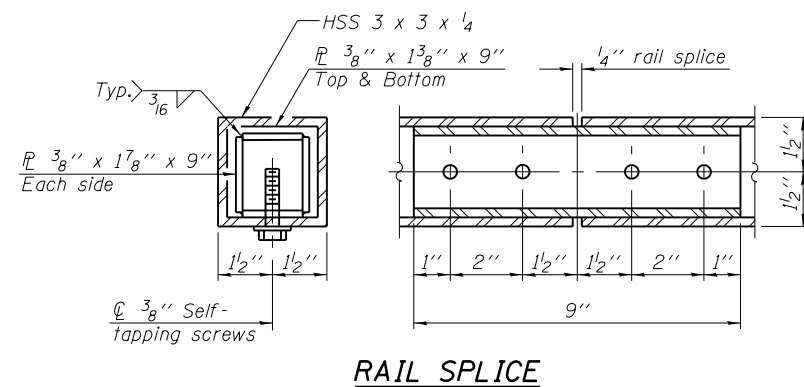
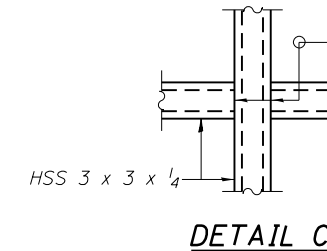
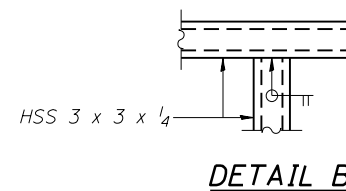
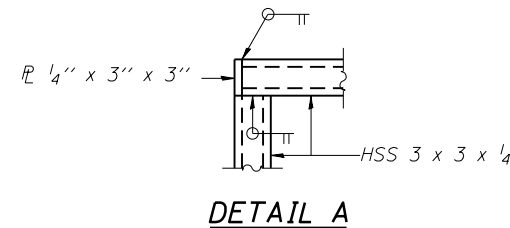
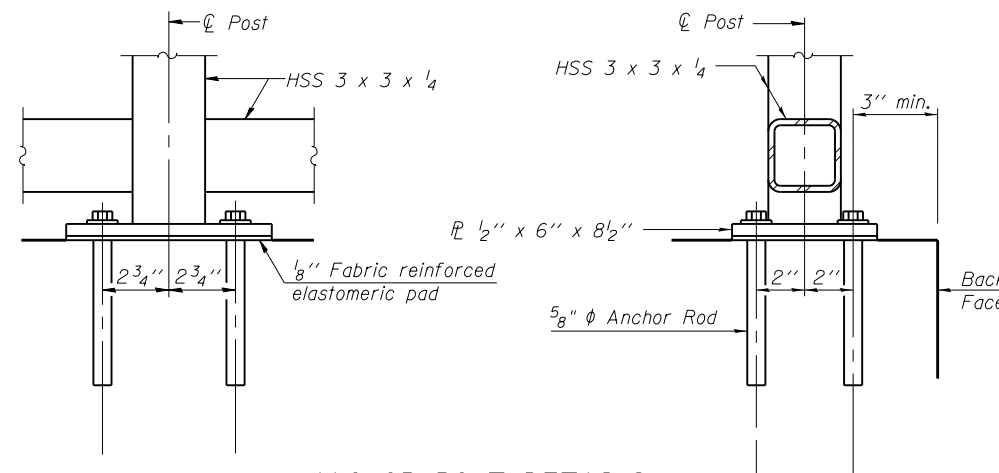


**NORTH PARAPET RAILING
ELEVATION**

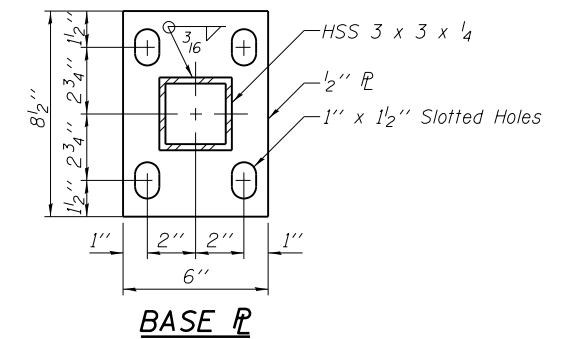
Note:
All steel rail elements shall be galvanized according to Article 509.05 of the Standard Specifications.



(10'-0" Maximum Post Spacing)



The Contractor shall drill and set 5/8" ϕ anchor rods according to Article 509.06 of the Standard Specifications. Embedment shall be according to the manufacturer's specifications.



BILL OF MATERIAL

Item	Unit	Quantity
Parapet Railing	Foot	262

FILE NAME =	USER NAME = steffenmk	DESIGNED - DFZ	REVISED -	STATE OF ILLINOIS DEPARTMENT OF TRANSPORTATION	NORTH PARAPET RAILING SN. 087-0020	F.A.P. R.E.	SECTION	COUNTY	TOTAL SHEETS	SHEET NO.	
ci:\pw\work\p\idot\steffenmk\d0187065\074615-shit-brdetails.dgn	DRAWN - DFZ	REVIS	REVIS			325	(11B-1)BR	SHELBY	32	26	
Default	PLOT SCALE = 40.0000' / in.	CHECKED - MEA	REVIS			CONTRACT NO. 74615					
	PLOT DATE = 3/28/2013	DATE - 10/31/2012	REVIS			ILLINOIS FED. AID PROJECT					