

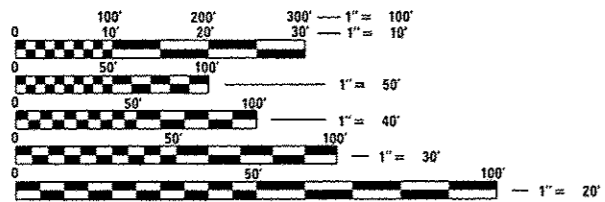
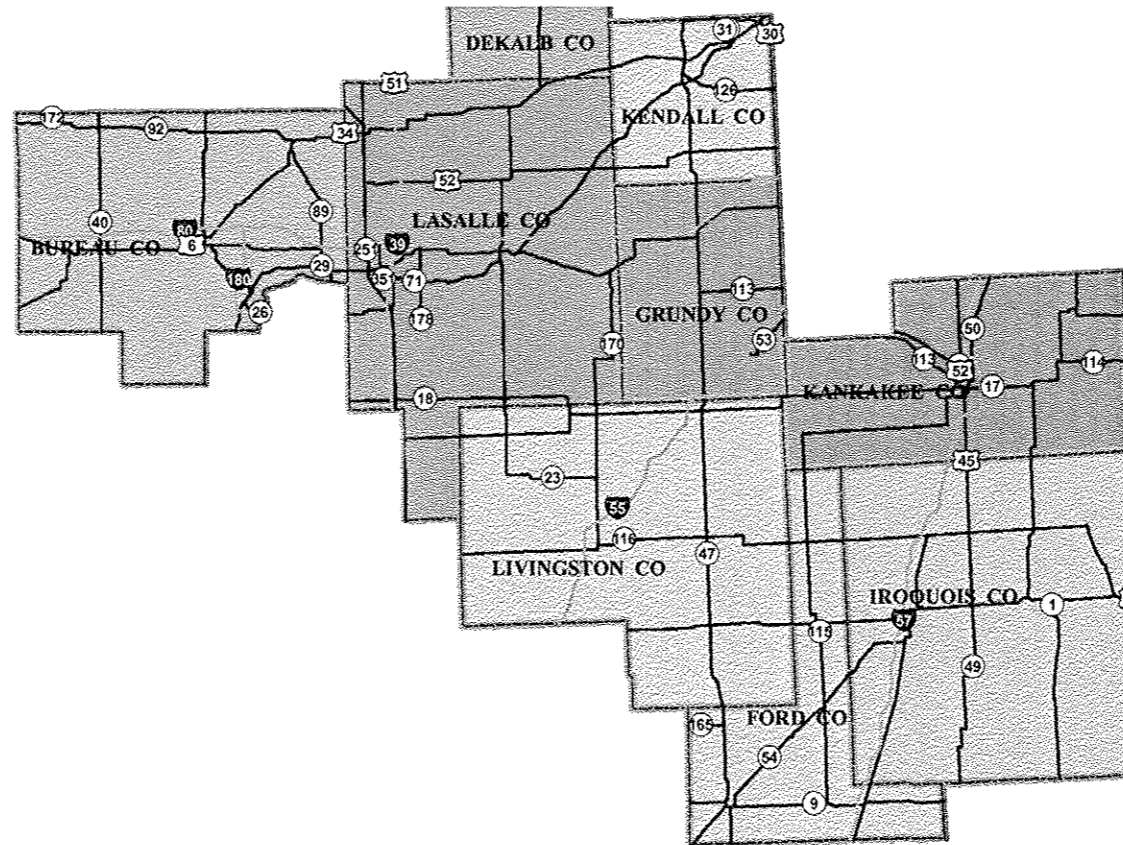
SEE PG 2 FOR INDEX OF SHEETS AND
HIGHWAY STANDARDS

STATE OF ILLINOIS
DEPARTMENT OF TRANSPORTATION
DIVISION OF HIGHWAYS

**PROPOSED
HIGHWAY PLANS**

VARIOUS ROUTES
SECTION D-3 INTERCHANGE SIGNS
PROJECT: *HSIP-0005 (928)*
SAFETY IMPROVEMENT
VARIOUS COUNTIES

C-93-094-13



FULL SIZE PLANS HAVE BEEN PREPARED USING STANDARD
ENGINEERING SCALES. REDUCED SIZED PLANS WILL NOT
CONFORM TO STANDARD SCALES. IN MAKING MEASUREMENTS
ON REDUCED PLANS, THE ABOVE SCALES MAY BE USED.

J.U.L.I.E.
JOINT UTILITY LOCATION INFORMATION FOR EXCAVATION
1-800-892-0123
OR 811

PROJECT ENGINEER: JOE KANNEL
PROJECT MANAGER: SCOTT A. FERGUSON
DISTRICT 3 NO. (815) 434-6131
CONTRACT NO. 66C96

F.A. RTE.	SECTION	COUNTY	TOTAL SHEETS	SHEET NO.
**	*	VARIOUS	15	1
		ILLINOIS	CONTRACT NO. 66C96	

- D-3 INTERCHANGE SIGNS
- VARIOUS

D-93-042-13



STATE OF ILLINOIS
DEPARTMENT OF TRANSPORTATION
DIVISION OF HIGHWAYS

SUBMITTED *3-29 2013*
Paul A. Lockman
DEPUTY DIRECTOR OF HIGHWAYS, REGION ENGINEER

April 26 2013
John D. Baranzelli, PE, Inc.
ENGINEER OF DESIGN AND ENVIRONMENT

April 26 2013
Omer Osman, PE, Inc.
DIRECTOR OF HIGHWAYS, CHIEF ENGINEER

PRINTED BY THE AUTHORITY
OF THE STATE OF ILLINOIS