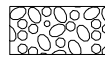


**LEGEND**

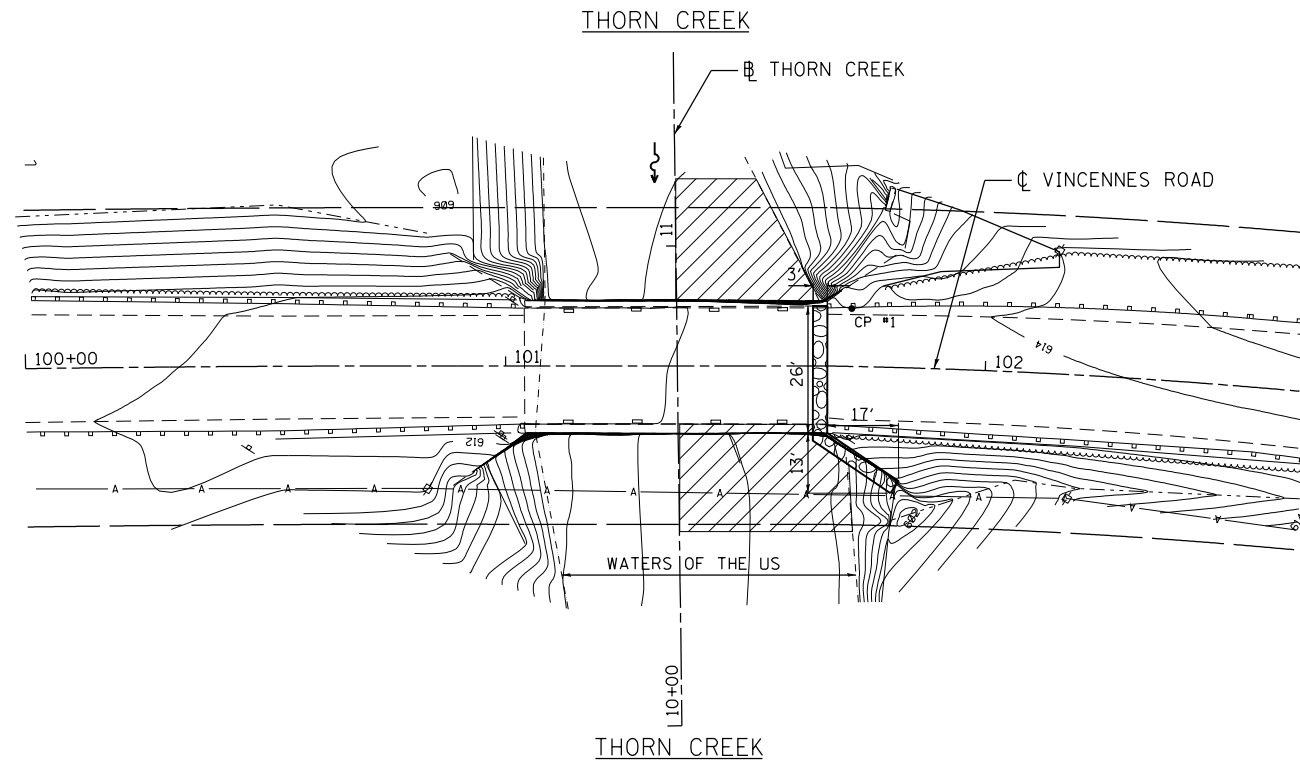
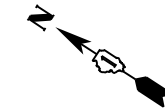


PERMANENT IMPACTS TO THE WATERS OF THE U.S. = 0.02 ACRES  
STONE RIPRAP, CLASS A4 (1' THICK) - 11 TONS



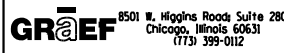
TEMPORARY IMPACTS TO THE WATERS OF THE U.S. = 0.031 ACRES

- CP 1 - SET REBAR AT THE SOUTH EASTERLY CORNER OF THE BRIDGE DECK
- CP 2 - FOUND PK NAIL IN ASPHALT AT THE NORTH WESTERLY CORNER OF VINCENNES AND MERRILL STREET  
ELEV. = 617.58



CP #2

3/12/2013 11:24:31 AM



USER NAME = 1485	DESIGNED -	REVISED -
	DRAWN -	REVISED -
PLOT SCALE = 40.0000' / in.	CHECKED -	REVISED -
PLOT DATE = 3/12/2013	DATE - 03/20/2013	REVISED -

**STATE OF ILLINOIS  
DEPARTMENT OF TRANSPORTATION**

**COOK & WILL COUNTY RIP RAP IMPROVEMENTS  
SN 016-0623 VINCENNES ROAD OVER THORN CREEK - EROSION PLAN**

SCALE: 1"=20'    SHEET 2 OF 2 SHEETS    STA.    TO STA.

F.A. RTE.	SECTION	COUNTY	TOTAL SHEETS	SHEET NO.
*	2012-007 I	COOK/WILL	38	9
* VARIOIUS ROUTES			CONTRACT NO. 60T53	
ILLINOIS FED. AID PROJECT				