

STATE OF ILLINOIS
DEPARTMENT OF TRANSPORTATION
DIVISION OF HIGHWAYS
PROPOSED
HIGHWAY PLANS

VARIOUS ROUTES
SECTION 2012-007 I
AT VARIOUS SOUTH COOK & WILL COUNTY LOCATIONS
RIP RAP IMPROVEMENTS
COOK & WILL COUNTY
C-91-370-12

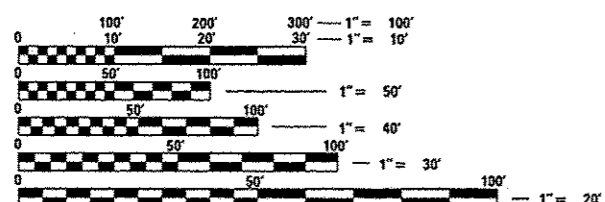
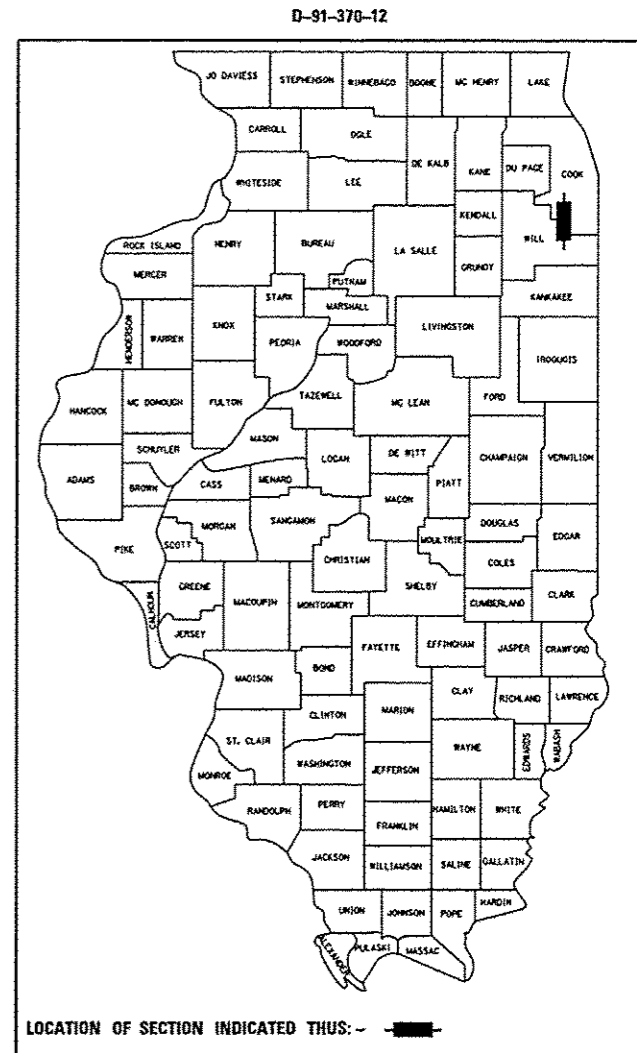
F.A.P. RTE.	SECTION	COUNTY	TOTAL SHEETS	SHEET NO.
•	2012-007 I	COOK/WILL	38	1
•	VARIOUS ROUTES	ILLINOIS	CONTRACT NO. 60T53	

FOR INDEX OF SHEETS, SEE SHEET NO. 2

TRAFFIC DATA:

VINCENNES ROAD EXISTING ADT = 4,800 SPEED LIMIT = 35 MPH	IL 59 EXISTING ADT = 41,300 SPEED LIMIT = 45 MPH
IL 83 EXISTING ADT = 29,600 SPEED LIMIT = 35 MPH	IL 53 EXISTING ADT = 15,000 SPEED LIMIT = 40 MPH
GOVERNOR'S HIGHWAY EXISTING ADT = 18,600 SPEED LIMIT = 45 MPH	RAMP IL 113 EXISTING ADT = 200 SPEED LIMIT = 45 MPH
US 52 EXISTING ADT = 27,500 SPEED LIMIT = 40 MPH	I-57 EXISTING ADT = 30,600 SPEED LIMIT = 65 MPH

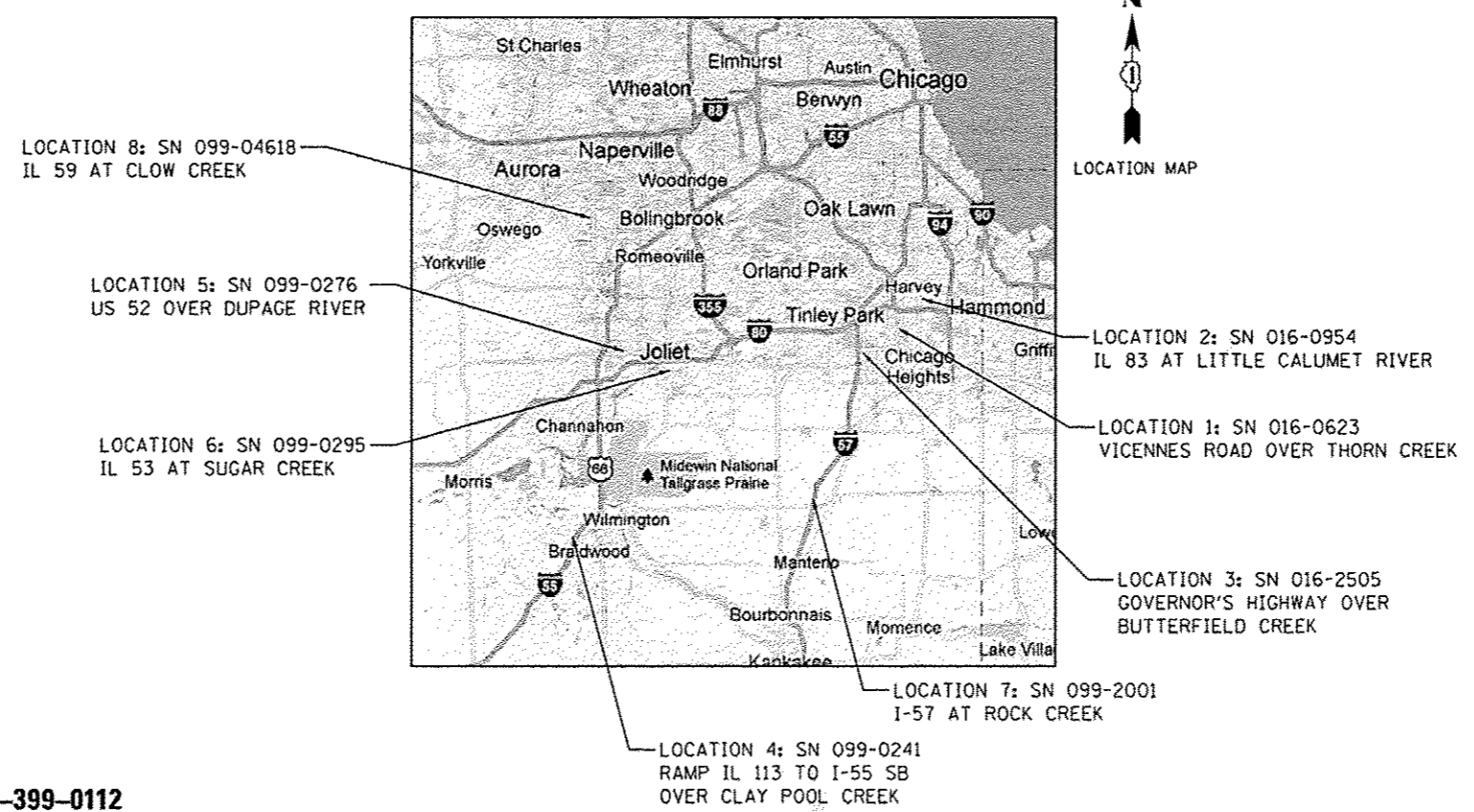
THIS PROJECT IS LOCATED IN THE VILLAGES OF GLENWOOD, MATTESON, PEOTONE, AND SHOREWOOD AND IN THE CITIES OF BRAIDWOOD, HARVEY, JOLIET, AND NAPERVILLE



FULL SIZE PLANS HAVE BEEN PREPARED USING STANDARD ENGINEERING SCALES. REDUCED SIZED PLANS WILL NOT CONFORM TO STANDARD SCALES. IN MAKING MEASUREMENTS ON REDUCED PLANS, THE ABOVE SCALES MAY BE USED.

J.U.L.I.E.
 JOINT UTILITY LOCATION INFORMATION FOR EXCAVATION
 1-800-892-0123
 OR 811

PROJECT ENGINEER: PETER JOHNSTON (GRAEF) 773-399-0112
PROJECT MANAGER: KEN ENG (IDOT) 847-705-4247
CONTRACT NO. 60T53



BLOOM, DUPAGE, PEOTONE, REED, RICH, THORNTON, TROY AND WHEATLAND

PROFESSIONAL ENGINEER'S SIGN & SEAL

Peter M. Johnston

EXPIRES: 11-30-13

062-047647
REGISTERED
PROFESSIONAL
ENGINEER
OF
ILLINOIS

STATE OF ILLINOIS
 DEPARTMENT OF TRANSPORTATION
 DIVISION OF HIGHWAYS

SUBMITTED *MARCH 15 2013*

John F. [Signature]
 DEPUTY DIRECTOR OF HIGHWAYS, REGION ENGINEER

April 26 2013
John D. Baranzello, P.E.
 ENGINEER OF DESIGN AND ENVIRONMENT

April 26 2013
Omer Osman, P.E.
 DIRECTOR OF HIGHWAYS, CHIEF ENGINEER

**PRINTED BY THE AUTHORITY
 OF THE STATE OF ILLINOIS**