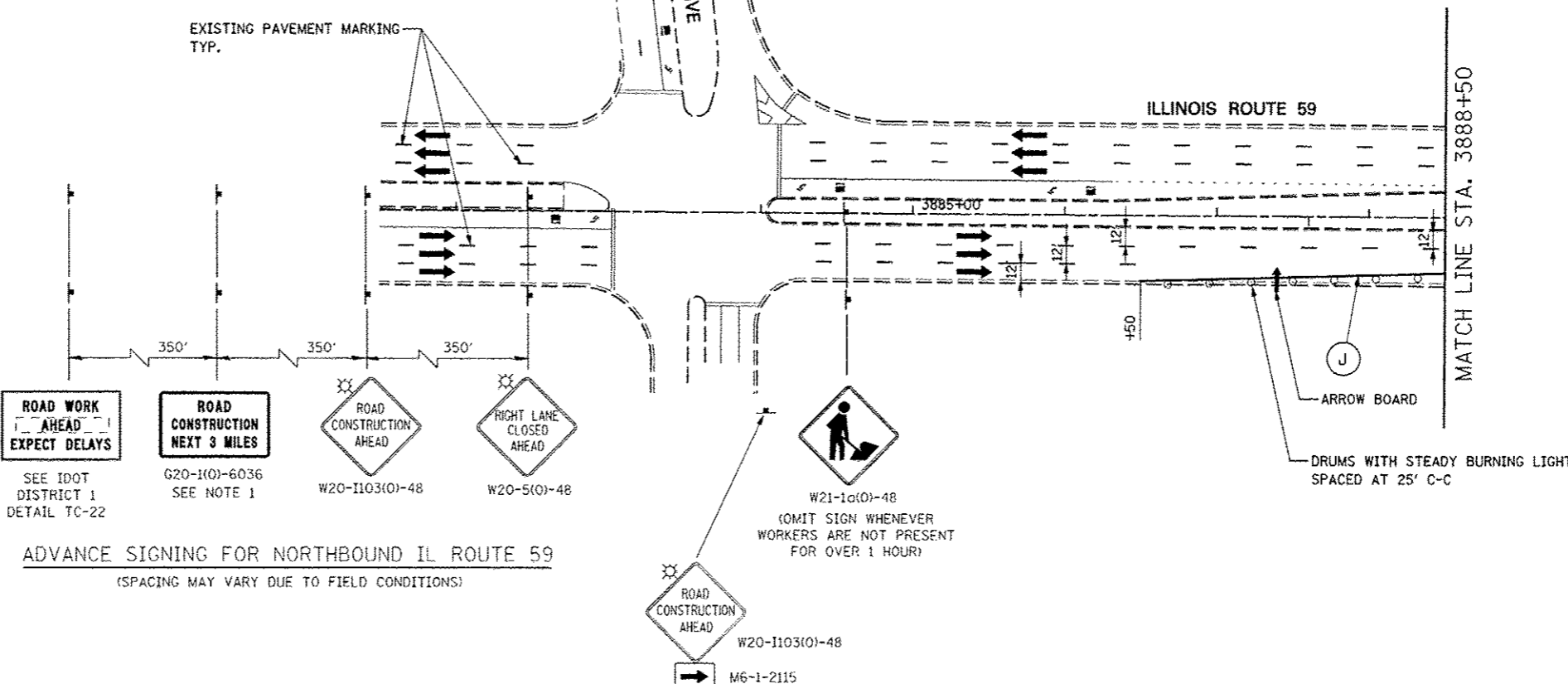


LEGEND

- CONSTRUCTION WORK ZONE
- TEMPORARY PAVEMENT PLACED IN THIS STAGE
- DIRECTION OF TRAFFIC
- CHANNELIZATION DRUM WITH STEADY BURNING LIGHT (SEE MAINTENANCE OF TRAFFIC NOTE 33)
- CHANNELIZATION DRUM WITH STEADY BURNING LIGHT
- TEMPORARY CONCRETE BARRIER
- VERTICAL PANEL WITH STEADY BURNING LIGHT
- SIGN
- TYPE III BARRICADE LOCATION
- FLASHING YELLOW LIGHT

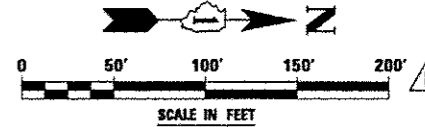


MOT PAVEMENT MARKING LEGEND

- TEMPORARY PAVEMENT MARKING - LINE 4", SOLID WHITE
- TEMPORARY PAVEMENT MARKING - LINE 4", WHITE SKIP-DASH (10' LINE - 30' SPACE)
- TEMPORARY PAVEMENT MARKING - LINE 4", SOLID YELLOW
- TEMPORARY PAVEMENT MARKING - LINE 4", DOUBLE YELLOW SPACED AT 11" C-C WITH TEMPORARY RAISED REFLECTIVE PAVEMENT MARKERS SPACED 40' C-C (BI-DIRECTIONAL AMBER)
- TEMPORARY PAVEMENT MARKING - LINE 6", SOLID WHITE
- TEMPORARY PAVEMENT MARKING - LINE 6", WHITE DOTTED (2' LINE - 6' SPACE) (UNLESS OTHERWISE NOTED)
- TEMPORARY PAVEMENT MARKING - LINE 12", SOLID YELLOW
- TEMPORARY PAVEMENT MARKING - LINE 24", SOLID WHITE
- TEMPORARY PAVEMENT MARKING, LETTERS & SYMBOLS
- WET REFLECTIVE TEMPORARY TAPE, TYPE III, 4", SOLID WHITE
- WET REFLECTIVE TEMPORARY TAPE, TYPE III, 4", WHITE SKIP-DASH (10' LINE - 30' SPACE)
- WET REFLECTIVE TEMPORARY TAPE, TYPE III, 4", SOLID YELLOW
- WET REFLECTIVE TEMPORARY TAPE, TYPE III, 4", DOUBLE YELLOW SPACED AT 11" C-C WITH TEMPORARY RAISED REFLECTIVE PAVEMENT MARKERS SPACED 40' C-C (BI-DIRECTIONAL AMBER)
- WET REFLECTIVE TEMPORARY TAPE, TYPE III, 6", SOLID WHITE
- WET REFLECTIVE TEMPORARY TAPE, TYPE III, 6", WHITE DOTTED (2' LINE - 6' SPACE) (UNLESS OTHERWISE NOTED)
- WET REFLECTIVE TEMPORARY TAPE, TYPE III, 12", SOLID YELLOW
- WET REFLECTIVE TEMPORARY TAPE, TYPE III, 24", SOLID WHITE
- WET REFLECTIVE TEMPORARY TAPE, TYPE III, LETTERS & SYMBOLS

NOTES

1. THE CONTRACTOR SHALL INSTALL G20-1(0) "ROAD CONSTRUCTION NEXT 3 MILES" AND G20-2(0) "END CONSTRUCTION" SIGNS ONLY WHILE CONSTRUCTION IS ONGOING FOR ADJACENT ROADWAY CONTRACTS (60R31 AND 60I31) LOCATED NORTH OF NORTH AURORA ROAD. SEE IDOT STANDARD 701901.



	DESIGNED <i>PJO</i>	REVISED - ADDENDUM B 05/01/2013	STATE OF ILLINOIS DEPARTMENT OF TRANSPORTATION	MAINTENANCE OF TRAFFIC -- STAGE 3 ILLINOIS ROUTE 59	F.A.P. RTE.	SECTION	COUNTY	TOTAL SHEET SHEET NO.
	DRAWN <i>KES</i>	REVISED -						
	CHECKED <i>JCM</i>	REVISED -						
	DATE <i>12/11/2012</i>	REVISED -						
SCALE: AS SHOWN			SHEET NO. 126A OF 195 SHEETS	STA. 3880+00 TO STA. 3880+50	ILLINOIS FED. AID PROJECT			CONTRACT NO. 60R30
338			(112 & 113) WRS-7	DUPAGE	1156			220A