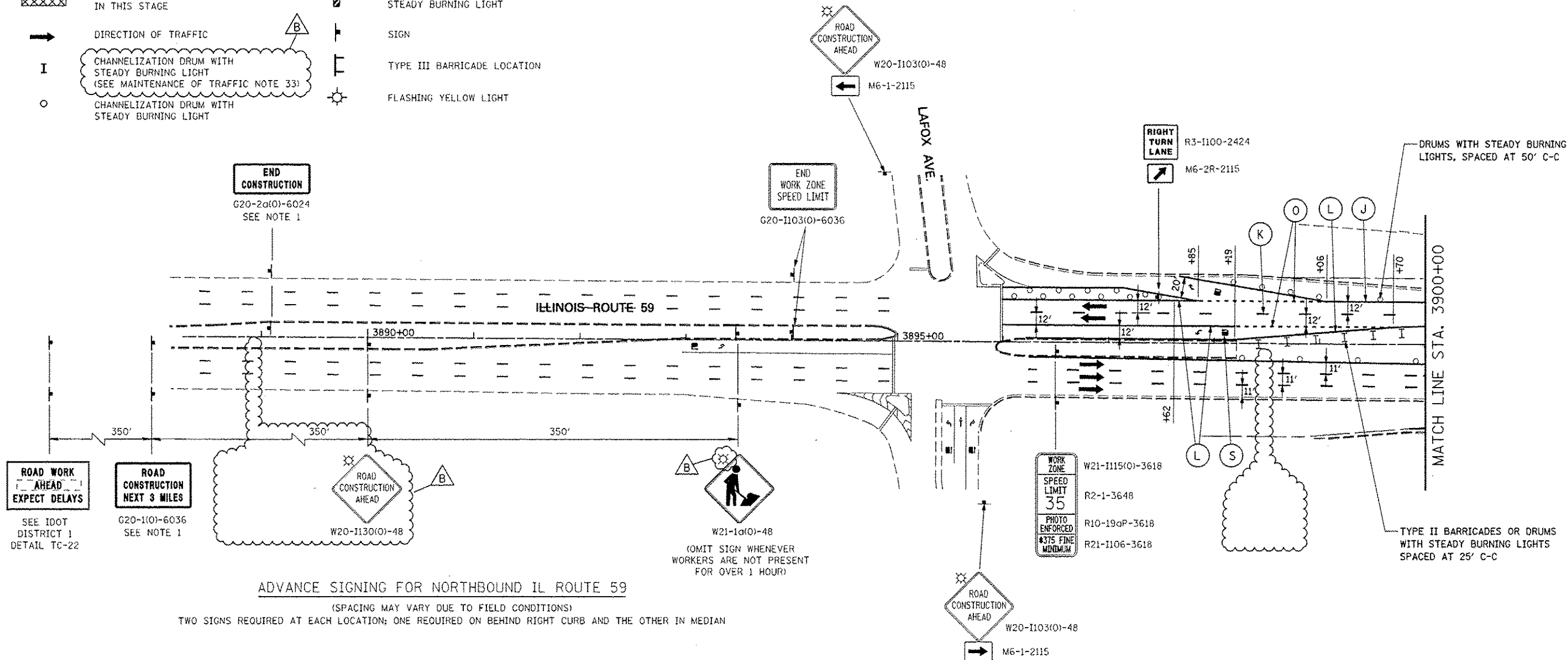
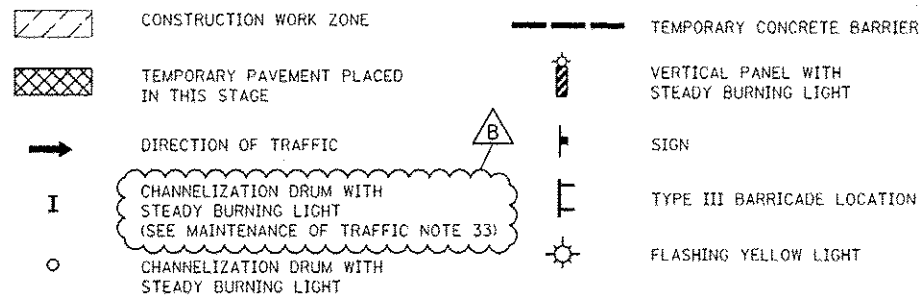


LEGEND

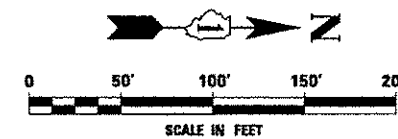


MOT PAVEMENT MARKING LEGEND

- | | | |
|-------------------------------------------------------------------------------------------------------------------------------------------------------------------|--------------------------------------------------------------------------------------------------------------------------------------------------------------------------|-------------------------------------------------------------------------------------------------------------|
| (A) TEMPORARY PAVEMENT MARKING - LINE 4", SOLID WHITE | (G) TEMPORARY PAVEMENT MARKING - LINE 12", SOLID YELLOW | (N) WET REFLECTIVE TEMPORARY TAPE, TYPE III, 6", SOLID WHITE |
| (B) TEMPORARY PAVEMENT MARKING - LINE 4", WHITE SKIP-DASH (10' LINE - 30' SPACE) | (H) TEMPORARY PAVEMENT MARKING - LINE 24", SOLID WHITE | (O) WET REFLECTIVE TEMPORARY TAPE, TYPE III, 6", WHITE DOTTED (2' LINE - 6' SPACE) (UNLESS OTHERWISE NOTED) |
| (C) TEMPORARY PAVEMENT MARKING - LINE 4", SOLID YELLOW | (I) TEMPORARY PAVEMENT MARKING, LETTERS & SYMBOLS | (P) WET REFLECTIVE TEMPORARY TAPE, TYPE III, 12", SOLID YELLOW |
| (D) TEMPORARY PAVEMENT MARKING - LINE 4", DOUBLE YELLOW SPACED AT 11" C-C WITH TEMPORARY RAISED REFLECTIVE PAVEMENT MARKERS SPACED 40' C-C (BI-DIRECTIONAL AMBER) | (J) WET REFLECTIVE TEMPORARY TAPE, TYPE III, 4", SOLID WHITE | (R) WET REFLECTIVE TEMPORARY TAPE, TYPE III, 24", SOLID WHITE |
| (E) TEMPORARY PAVEMENT MARKING - LINE 6", SOLID WHITE | (K) WET REFLECTIVE TEMPORARY TAPE, TYPE III, 4", WHITE SKIP-DASH (10' LINE - 30' SPACE) | (S) WET REFLECTIVE TEMPORARY TAPE, TYPE III, LETTERS & SYMBOLS |
| (F) TEMPORARY PAVEMENT MARKING - LINE 6", WHITE DOTTED (2' LINE - 6' SPACE) (UNLESS OTHERWISE NOTED) | (L) WET REFLECTIVE TEMPORARY TAPE, TYPE III, 4", SOLID YELLOW | |
| | (M) WET REFLECTIVE TEMPORARY TAPE, TYPE III, 4", DOUBLE YELLOW SPACED AT 11" C-C WITH TEMPORARY RAISED REFLECTIVE PAVEMENT MARKERS SPACED 40' C-C (BI-DIRECTIONAL AMBER) | |

NOTES

- THE CONTRACTOR SHALL INSTALL G20-1(0) "ROAD CONSTRUCTION NEXT 3 MILES" AND G20-2a(0) "END CONSTRUCTION" SIGNS ONLY WHILE CONSTRUCTION IS ONGOING FOR ADJACENT ROADWAY CONTRACTS (60R31 AND 60I31) LOCATED NORTH OF NORTH AURORA ROAD. SEE IDOT STANDARD 701901.



		DESIGNED <i>PJO</i>	REVISED - ADDENDUM B 05/01/2013	STATE OF ILLINOIS DEPARTMENT OF TRANSPORTATION	MAINTENANCE OF TRAFFIC – STAGE 2 ILLINOIS ROUTE 59				F.A.P. RTE.	SECTION	COUNTY	TOTAL SHEETS	SHEET NO.
		DRAWN <i>KES</i>	REVISED -		338	(112 & 113) WRS-7	DUPAGE	1156	184				
		CHECKED <i>JCM</i>	REVISED -		CONTRACT NO. 60R30								
		DATE <i>12/14/2012</i>	REVISED -		ILLINOIS FED. AID PROJECT								
				SCALE: AS SHOWN		SHEET NO. 90 OF 195 SHEETS		STA. 3889+00 TO STA. 3900+00					