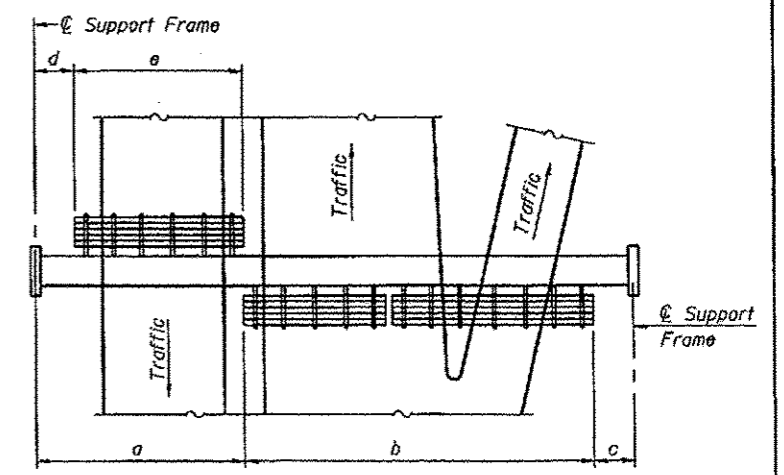
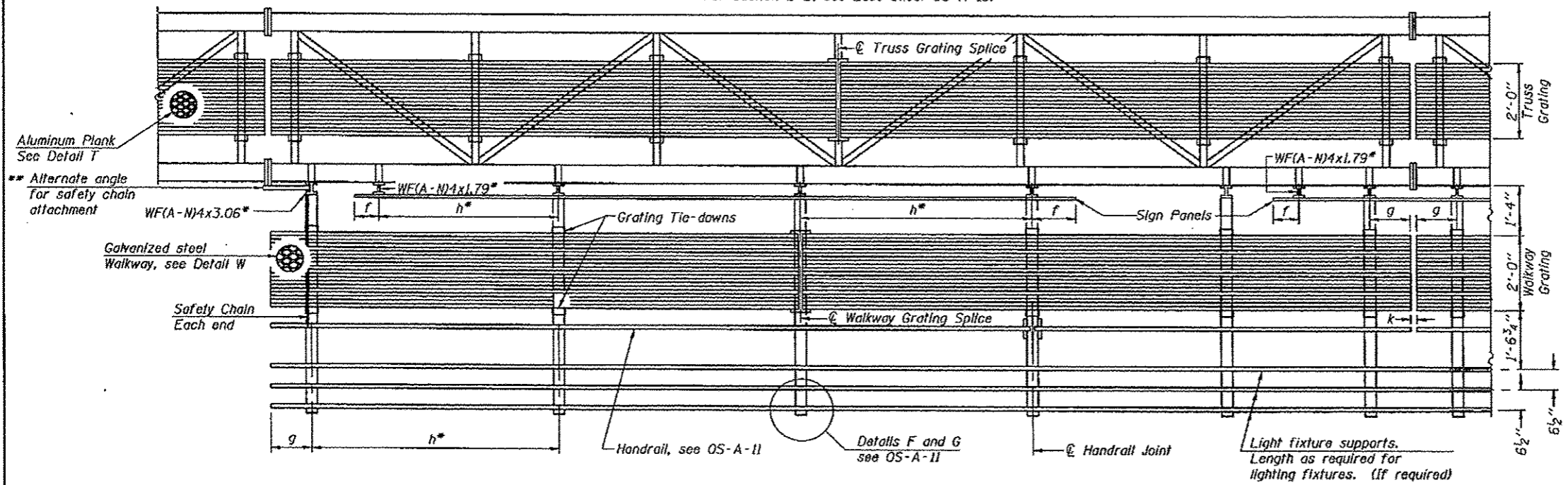


TYPICAL FRONT ELEVATION
 With lights and handrail omitted for clarity.
 For Section B-B, see Base Sheet OS-A-10.

Truss grating to facilitate inspection shall run full length (center to center of support frames) ±12" on overhead trusses. Cost of truss grating is included in "Overhead Sign Structure".



PLAN WALKWAY AND HANDRAIL SKETCH
 (Road plan beneath truss varies)



SECTION A-A

Handrail and walkway shall span a minimum of three brackets between splices and/or gap joints. Place all sign and walkway brackets as close to panel points as practical. Handrail joints, grating, and light support splices placed as needed.

Note: Details shown are considered equal alternatives to the Aluminum Walkway on Base Sheet OS-A-9, and may be substituted by Contractor at no change in contract cost.

Walkway and Truss Grating width dimensions are nominal and may vary ±1/2" based on available standard widths.

Notes:
 * Space walkway brackets WF(A-N)4x3.06 and sign brackets WF(A-N)4x1.79 for efficiency and within limits shown:

f = 12" maximum, 4" minimum (End of sign to center of nearest bracket)
 g = 12" maximum, 4" minimum (End of walkway grating to center of nearest support bracket)
 h = 6'-0" maximum (center to center of sign and/or walkway support brackets, WF(A-N)4x1.79 or WF(A-N)4x3.06)
 k = 2" maximum gap between adjacent walkway grating sections and handrail ends

** If walkway bracket at safety chain location is behind sign, add angle to bracket, see Alternate Safety Chain Attachment on Base Sheet OS-A-11.

For Details T and W, Section B-B and Grating Splice Details see Base Sheet OS-A-10.
 For handrail details see base sheet OS-A-11.

BRACKET TABLE

WF(A-N)4x1.79 or WF(A-N)4x3.06 ASTM B308, Alloy 6061-T6		
Sign Width		Number Brackets Required
Greater Than	Less Than or Equal To	
8'-0"	8'-0"	2
14'-0"	14'-0"	3
20'-0"	20'-0"	4
26'-0"	26'-0"	5
32'-0"	32'-0"	6

Structure Number	Station	a	b	c	d	e	Walkway Grating and Handrail Lengths
9S0441057R042.3	47+75	32'	28'	28'	X	X	28'
9S1001024L001.1	27+45	32'	39'	32'	X	X	39'
9S1001024L001.5	118+50	32'	28'	28'	X	X	28'

OS-A-9S

6-1-12

FILE NAME =	USER NAME = pritchettj	DESIGNED -	REVISED -
of\pritchettj\pritchettj\100314884\sign structure\2813-ahtr-pln.dgn		DRAWN -	REVISED -
		CHECKED -	REVISED -
		DATE -	REVISED -

STATE OF ILLINOIS
 DEPARTMENT OF TRANSPORTATION

OVERHEAD SIGN STRUCTURES
 ALTERNATE WALKWAY DETAILS

-VARIOUS ROUTES			
F.A.I. R.T.E.	SECTION	COUNTY	TOTAL SHEET NO.
09 OVD SIN STR REPL13-11	VARIOUS	29	16
CONTRACT NO. 46227			

SCALE: SHEET OF SHEETS STA. TO STA.

ILLINOIS FED. AID PROJECT