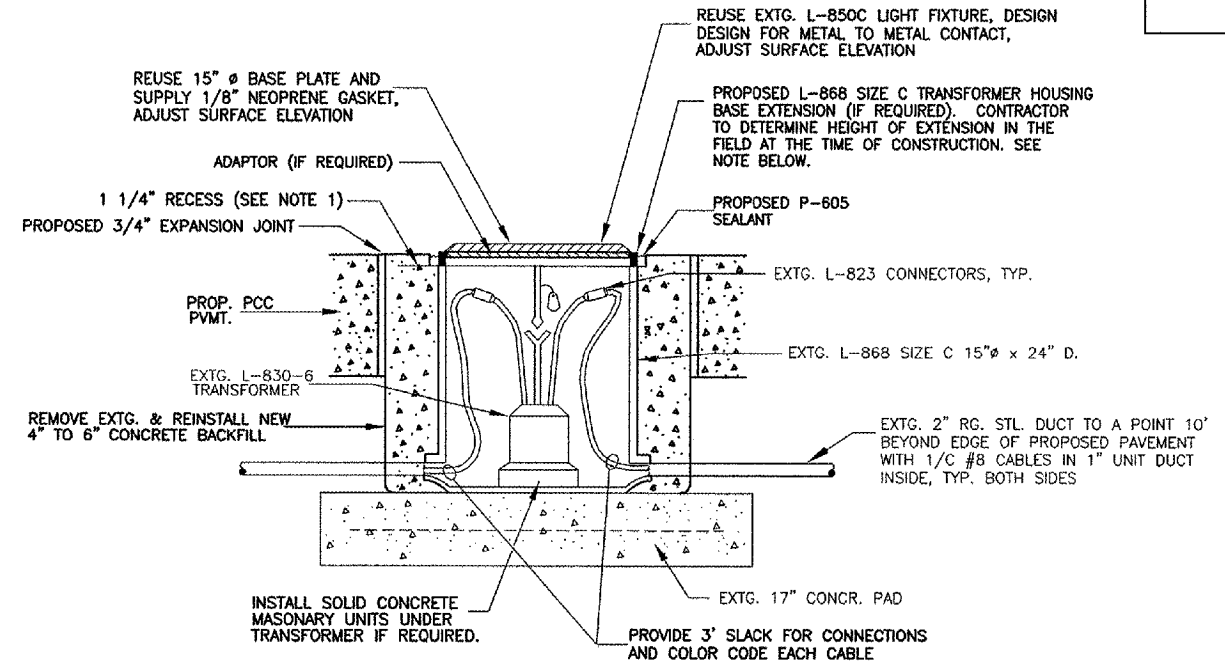


TYPICAL DETAIL L-861 / 862
 EDGE LIGHTS ADJUSTMENT OR RELOCATION - IN TURF

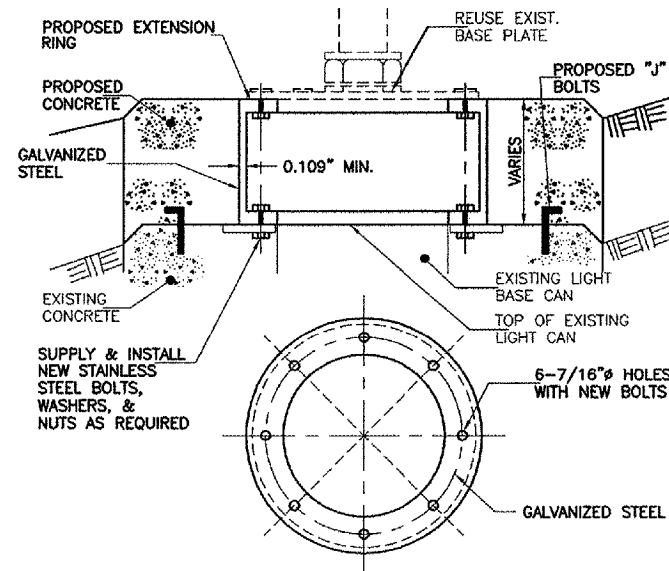
NOTES:

1. AT THE CONTRACTOR'S OPTION (FOR EDGE LIGHTS TO BE ADJUSTED UP), LIGHT BASE CAN EXTENSION RINGS MAY BE USED TO ADJUST LIGHT FIXTURE UPWARD. CONTRACTOR TO EXTEND EXISTING CONCRETE APRON AROUND LIGHT BASE TO PROPOSED GRADE ELEVATION (IF BASE CAN EXTENSION RINGS ARE USED). CONTRACTOR TO DETERMINE HEIGHT OF BASE CAN EXTENSION RINGS IN THE FIELD AT THE TIME OF CONSTRUCTION.
2. FOR EDGE LIGHTS TO BE ADJUSTED DOWNWARD, THE CONTRACTOR SHALL REMOVE THE EXISTING LIGHT CAN UNIT AND REINSTALL THE EXISTING EDGE LIGHT UNIT.
3. GROUND SURFACE DRAINAGE TO FLOW AWAY FROM EDGE OF PAVEMENT AND LIGHT BASE CANS. NO WATER PONDING OR LOW SPOTS SHALL BE PERMITTED AROUND LIGHT BASE CANS.



TYPICAL DETAIL - L-850C EDGE LIGHT IN PCC PAVEMENT
 ADJUST SURFACE ELEVATION

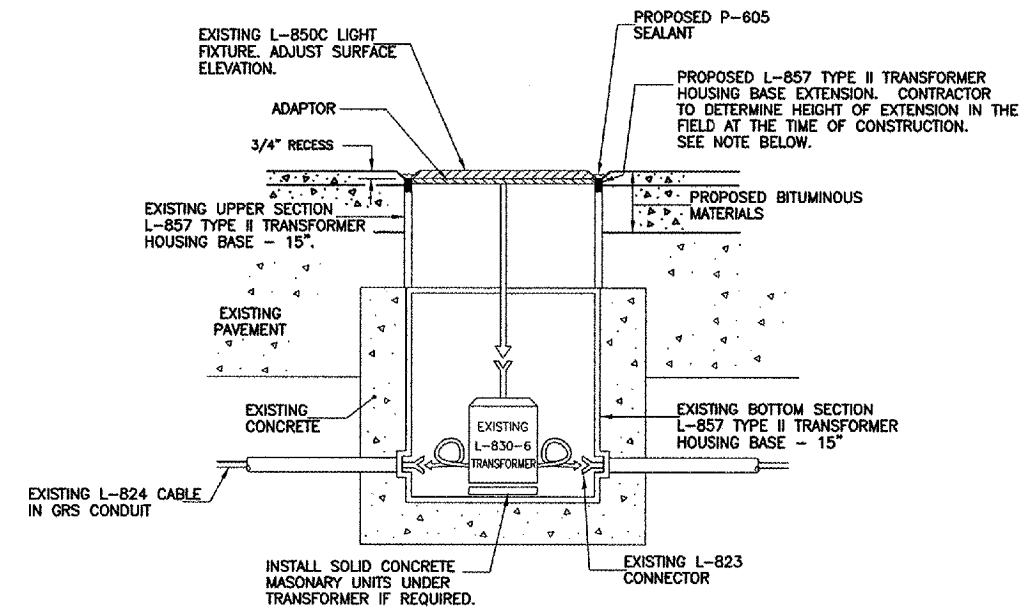
NOTE: THE CONTRACTOR SHALL FIELD VERIFY EXISTING LIGHT BASE TYPE AND SIZE. NO ADDITIONAL PAYMENT WILL BE MADE FOR ALTERNATE LIGHT CAN TYPES OR SIZES. RETAP EXISTING HOLES AS REQUIRED.



NOTE: THE CONTRACTOR SHALL FIELD VERIFY EXISTING LIGHT BASE TYPES (MOST ARE 12" L-867) AND REQUIRED HEIGHT ADJUSTMENT DIMENSIONS. NO ADDITIONAL PAYMENT WILL BE MADE FOR ALTERNATE LIGHT CAN TYPES. REDRILL AND RETAP EXISTING HOLES AS REQUIRED. COSTS SHALL BE INCLUDED IN THE UNIT PRICE FOR LIGHT ADJUSTMENT.

OPTIONAL EXTENSION RING DETAIL
 (ONLY FOR EDGE LIGHTS TO BE ADJUSTED UP)

N.T.S.



TYPICAL DETAIL - L-850C EDGE LIGHT IN BITUMINOUS PAVEMENT
 ADJUST SURFACE ELEVATION

NOTE: THE CONTRACTOR SHALL FIELD VERIFY EXISTING LIGHT BASE TYPE AND SIZE. NO ADDITIONAL PAYMENT WILL BE MADE FOR ALTERNATE LIGHT CAN TYPES OR SIZES. RETAP EXISTING HOLES AS REQUIRED.