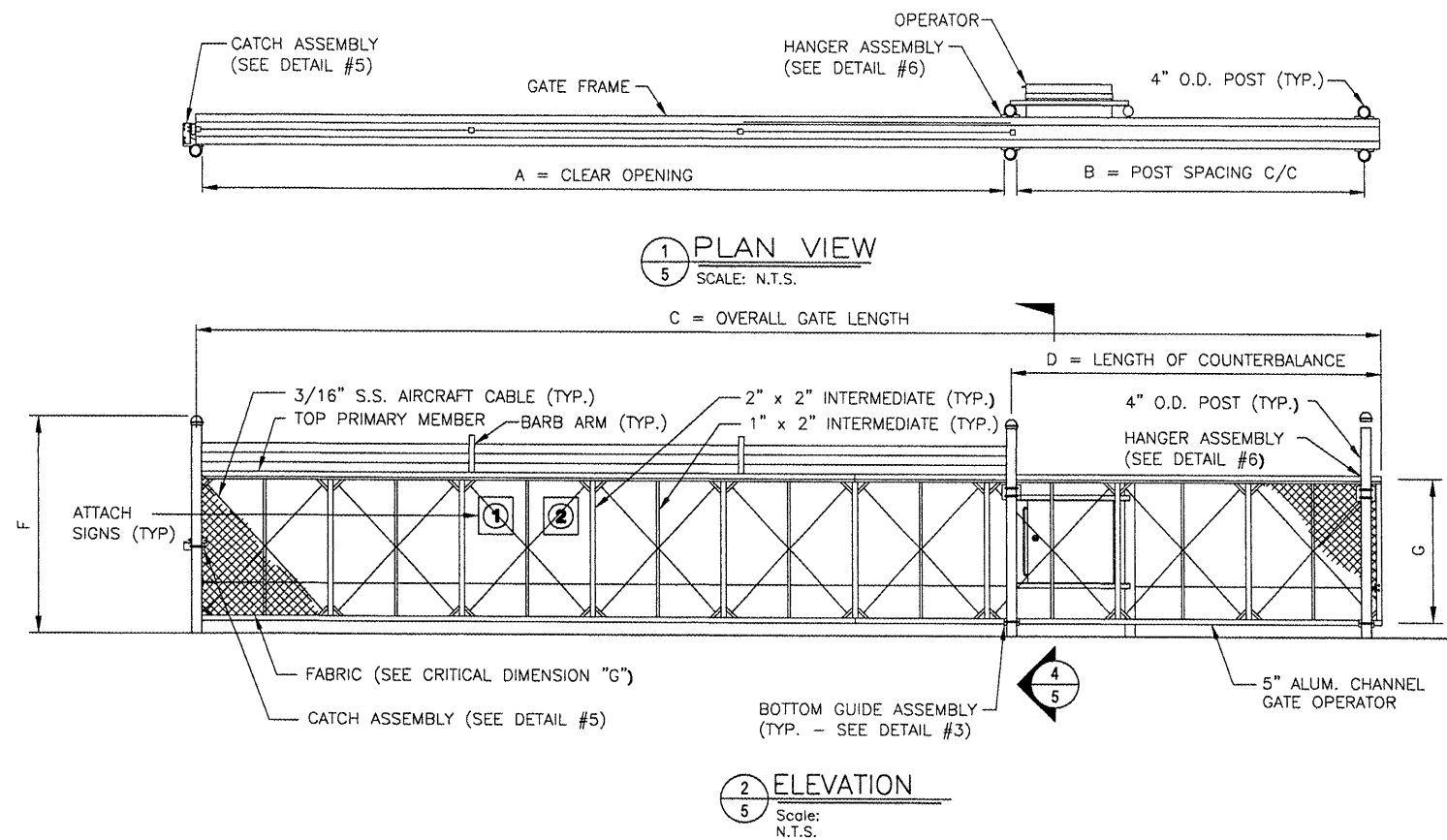


PE086

REVISIONS		
NUMBER	BY	DATE



CANTILEVER SLIDE GATE CRITICAL DIMENSION CHART			
	FORMULA	18' GATE	24' GATE
A	CLEAR OPENING	A	A
B	COUNTERBALANCE POST SPACING C/C	(A/2)-11"	8'-1"
C	OVERALL GATE LENGTH	A x 1.5	27'-0"
D	COUNTERBALANCE LENGTH	A x 0.5	9'-0"
E	NOMINAL GATE HEIGHT	E	10'-0"
F	POST HEIGHT	E + 1'-6"	11'-6"
G	FABRIC HEIGHT	E - 1'-0"	9'-0"

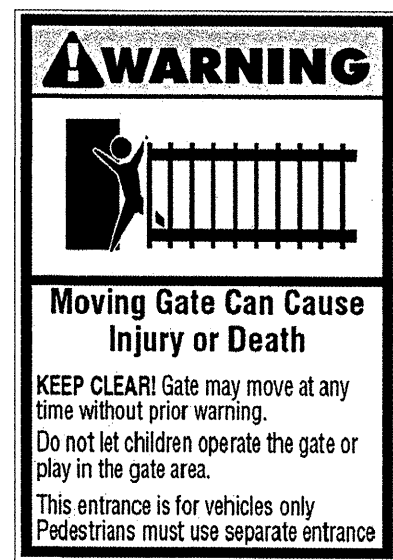
- Notes:
- 1) In the 1st row under the Title, you can replace the Gate width with a Gate # if you wish.
  - 2) Dimensions E F & G are for an 8-foot tall Gate. Adjust as needed for your specific fence height.
  - 3) Dimension F is for a Gate that has barbed wire. If your Gate will not have barbed wire, subtract one foot from the dimension.

SIGNS					
CONTRACTOR SHALL FURNISH AND INSTALL SIGNS AS INDICATED IN TABLE BELOW					
SIGN	DIMENSIONS	BACKGROUND COLOR	LETTERING COLOR	LETTERING HEIGHT	TEXT
1	24' x 18"	WHITE	RED	1.5"	FAA REGULATIONS REQUIRE THAT AFTER ENTERING OR EXITING THROUGH THIS SECURITY GATE YOU ARE REQUIRED TO WAIT UNTIL THE GATE CLOSES BEFORE PROCEEDING. FINES OR PENALTIES WILL BE IMPOSED.
2	SEE WARNING SIGN DETAIL				

NOTES  
1) SIGNS SHALL BE INSTALLED ON BOTH SIDES OF GATE.

G R E A T E R  
**Peoria**  
R E G I O N A L  
A I R P O R T

CONSTRUCT NEW PERIMETER ROAD AND PERIMETER FENCE - PROJECT 1



WARNING SIGN DETAIL

UL 235 COMPLIANCE NOTES

- GATE INSTALLATION SHALL COMPLY WITH ALL REQUIREMENTS OF UL 235, INCLUDING, BUT NOT LIMITED TO:
1. ALL OPENINGS OF THE SLIDE GATE ARE GUARDED OR SCREENED FROM THE BOTTOM OF THE GATE TO A MINIMUM OF 4 FEET ABOVE GROUND TO PREVENT A 2-1/4" DIAMETER SPHERE FROM PASSING THROUGH THE OPENINGS ANYWHERE IN THE GATE, AND IN THAT PORTION OF THE ADJACENT FENCE THAT THE GATE COVERS IN THE OPEN POSITION.
  2. ALL EXPOSED PINCH POINTS ARE ELIMINATED OR GUARDED AND GUARDING IS SUPPLIED FOR ALL EXPOSED ROLLERS.
  3. A WARNING SIGN (SEE DETAIL, THIS SHEET) MUST BE AFFIXED TO BOTH SIDES OF THE SLIDE GATE.
  4. FOR ADDITIONAL UL 235 REQUIREMENTS FOR THIS GATE INSTALLATION, SEE GATE OPERATOR DETAILS SHEET.

NOTES

1. CANTILEVERED GATE SHALL BE SUFFICIENTLY RIGID TO WITHSTAND FLEXING OR BENDING DURING WINDY CONDITIONS. CONTRACTOR SHALL PROVIDE STIFFENERS, STRUCTURAL SHAPES IN EXCESS OF THE MINIMUM SPECIFIED DIMENSIONS OR ADDITIONAL ROLLERS AND POSTS SUFFICIENT TO PREVENT DISPLACEMENT OF THE GATE BY WIND OR BY UNAUTHORIZED PERSONNEL.
2. CONTRACTOR SHALL PROVIDE AND INSTALL GATE AS COMPLETE WORKING UNIT. THE GATE WORK SHALL INCLUDE, BUT NOT BE LIMITED TO: GATE, OPERATOR, DIGITAL CODE CONTROL AND POWER CABLES, CONDUIT, TRENCHING, CIRCUIT BREAKERS, AND ALL CONNECTIONS, LABOR AND MATERIALS NECESSARY TO COMPLETE OPERATION.
3. LOCATION OF THE GATE OPERATOR SHALL BE AS RECOMMENDED BY THE MANUFACTURER.
4. PIPE BOLLARDS SHALL BE INSTALLED AT LOCATIONS SHOWN IN PLAN VIEW.
5. THE FABRIC TYPE AND FINISH OF THE GATE, MATCH WITH PROPOSED FENCE OR AS DIRECTED BY THE ENGINEER.
6. ALL SLIDING GATES SHALL HAVE ALL ROLLERS ENCLOSED IN STEEL OR PLASTIC SHROUDS TO PREVENT ACCIDENTAL INJURY.

LOCATIONS, DETAILS AND CHARACTER OF EQUIPMENT SHOWN ON THIS SHEET IS GENERIC. EQUIPMENT LOCATIONS SHALL BE AS RECOMMENDED BY THE EQUIPMENT MANUFACTURER.

**CMT**  
CRAWFORD, MURPHY & TILLY, INC.  
CONSULTING ENGINEERS

**IL PROJECT: PIA-3343**  
**AIP PROJ: 3-17-0080-XX**

FILE#	FILE#
DESIGN BY:	CET
DRAWN BY:	CMT
CHECKED BY:	XXX
APPROVED BY:	XXX
DATE:	10-26-2007
JOB No:	0706104

CANTILEVER GATE  
DETAILS 1

SHEET 53 OF 140 SHEETS