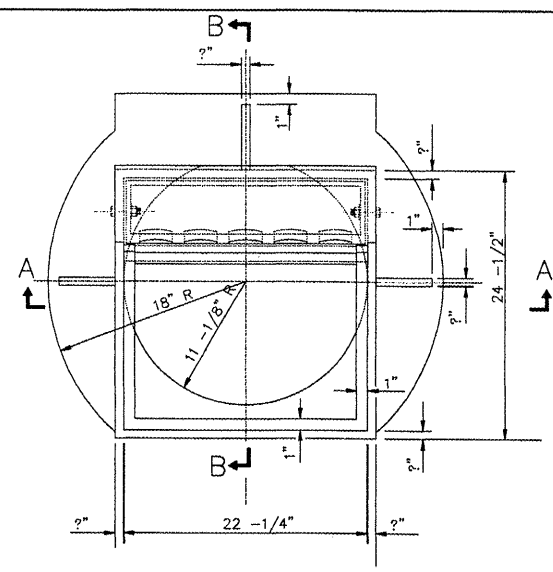


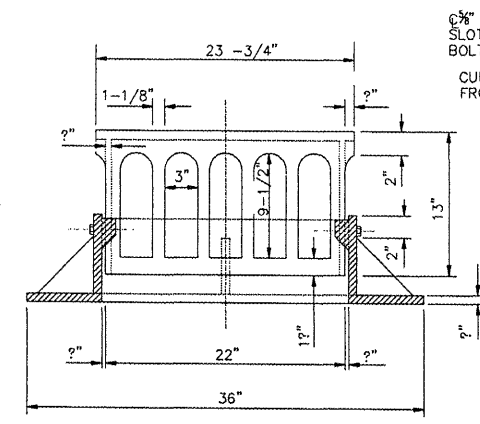
PE086

REVISIONS		
NUMBER	BY	DATE

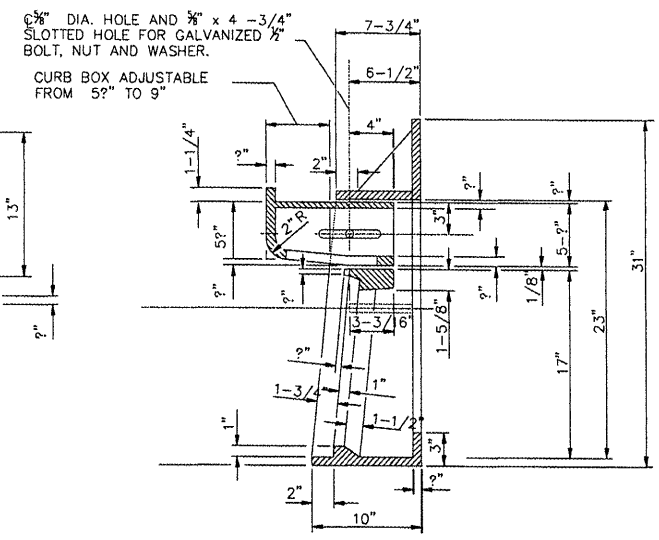
0 1 2
THIS BAR IS EQUAL TO 2" AT FULL SCALE (34X22). PLOT 1



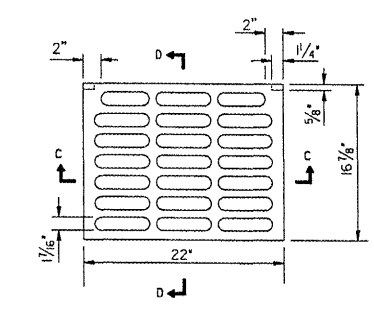
PLAN CAST FRAME
3/8" TYP.
N.T.S.



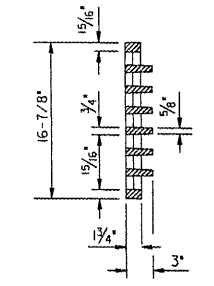
SECTION A-A



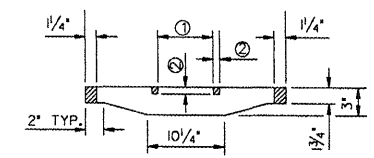
SECTION B-B



PLAN



SECTION D-D

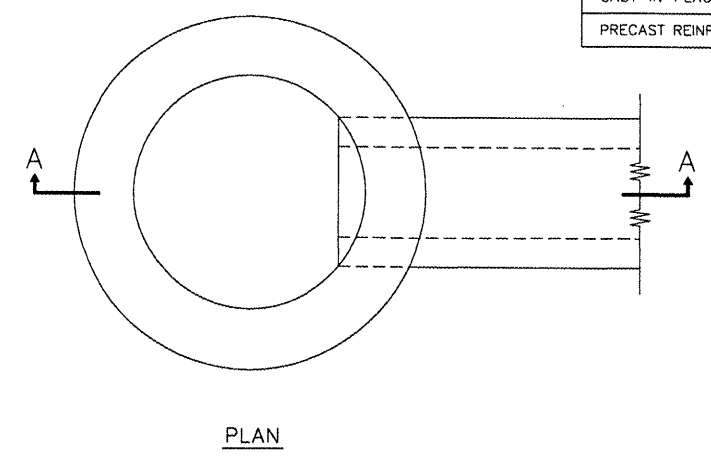


SECTION C-C
① = 6" TYP.
② = 9" TYP.

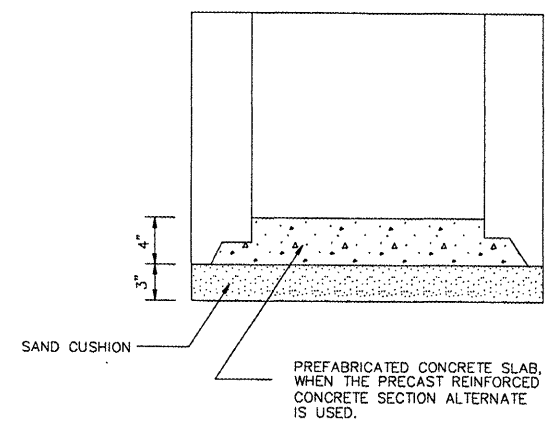
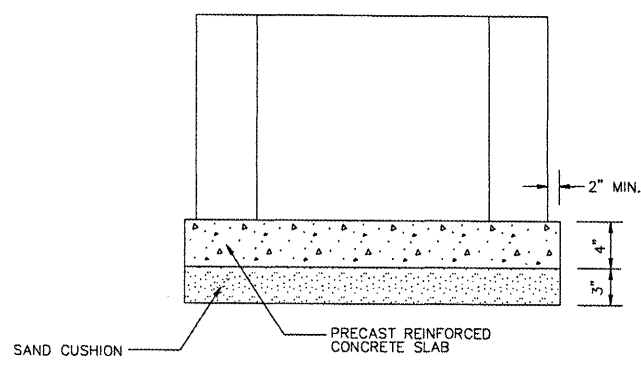
TYPE 3 CAST GRATE
(97 lbs.)
N.T.S.

FRAME AND GRATE TYPE 3
IDOT STANDARDS 604006 AND 604011

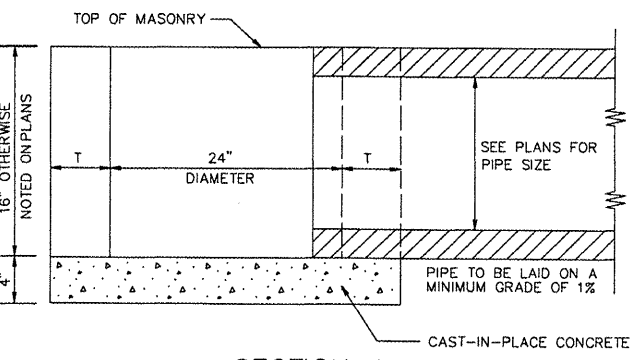
ALTERNATE MATERIALS FOR WALLS	T
CAST-IN-PLACE CONCRETE	6"
PRECAST REINFORCED CONCRETE SECTION	3"



PLAN

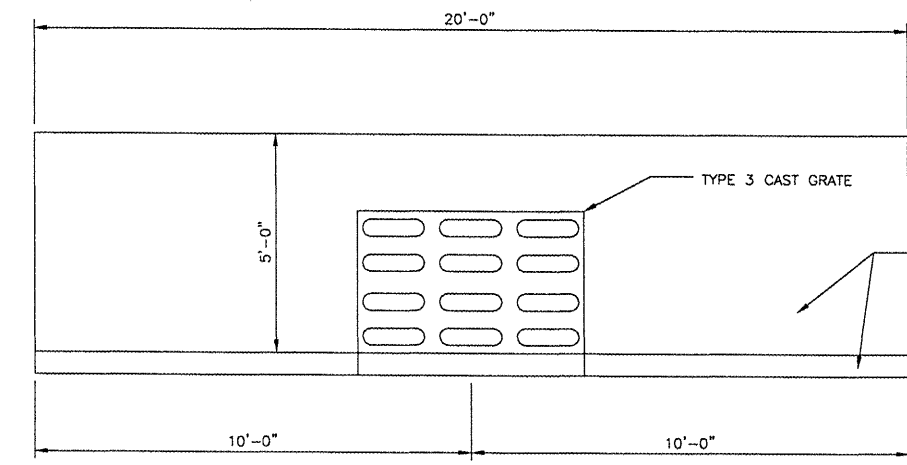


ALTERNATE METHODS
N.T.S.



SECTION A-A
N.T.S.


INLET - TYPE A
IDOT STANDARD 602301




COLLAPSED INLET REMOVAL AND REPLACEMENT DETAIL
N.T.S.

NOTES

- CONTRACTOR SHALL REMOVE EXISTING INLET.
- CONTRACTOR SHALL SAWCUT PAVEMENT AND CURB ADJACENT TO EXISTING INLET PRIOR TO REMOVAL.
- CONTRACTOR SHALL USE COMPACTED SELECT GRANULAR MATERIAL AS BEDDING AND BACKFILL FOR THE INLET.
- THE CONTRACTOR SHALL REPLACE THE CURB, GUTTER AND BITUMINOUS PAVEMENT.
- REPLACEMENT SECTION SHALL BE 6" BITUMINOUS PAVEMENT ON 12" OF CRUSHED AGGREGATE OR AS DIRECTED BY THE ENGINEER.


CONSTRUCT NEW PERIMETER ROAD AND PERIMETER FENCE - PROJECT 1


CMT
 CRAWFORD, MURPHY & TILLY, INC.
 CONSULTING ENGINEERS
©Copyright CMT, Inc.

FILE:	\$FILES\$
DESIGN BY:	CET
DRAWN BY:	CMT
CHECKED BY:	XXX
APPROVED BY:	XXX
DATE:	10-26-2007
JOB No:	0706104

DRAINAGE DETAILS
SHEET 3 OF 6

K:\Peoria\070610400\Draw\Sheets
 FILE: DRAINAGE DETAILS_SHT_3 OF 6.dwg
 DATE: 4/21/2008 1:50 PM