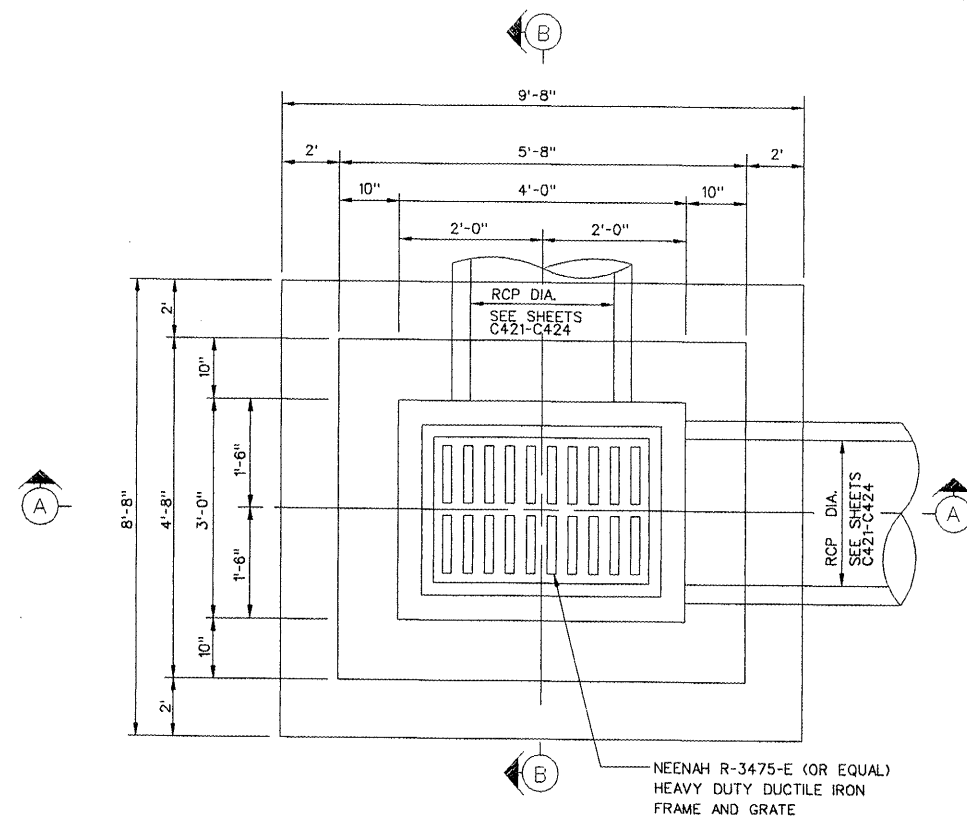


PE086

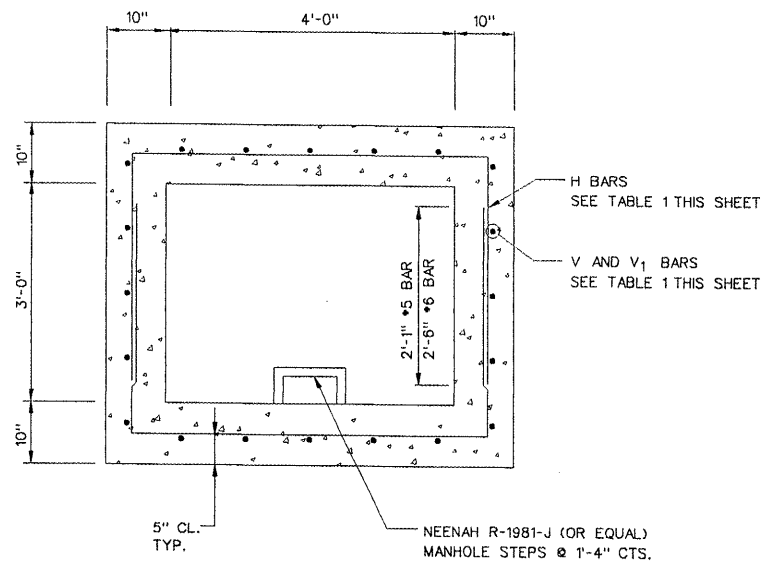
REVISIONS

NUMBER	BY	DATE

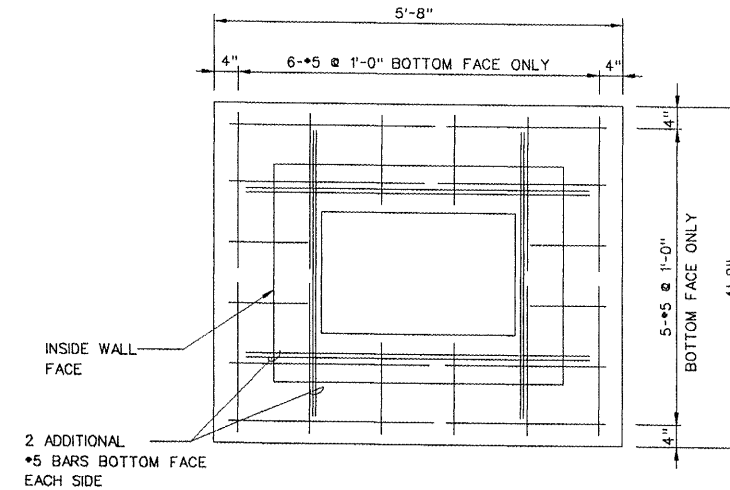
0 1 2
THIS BAR IS EQUAL TO 2" AT FULL SCALE (34X22).
PLOT 1



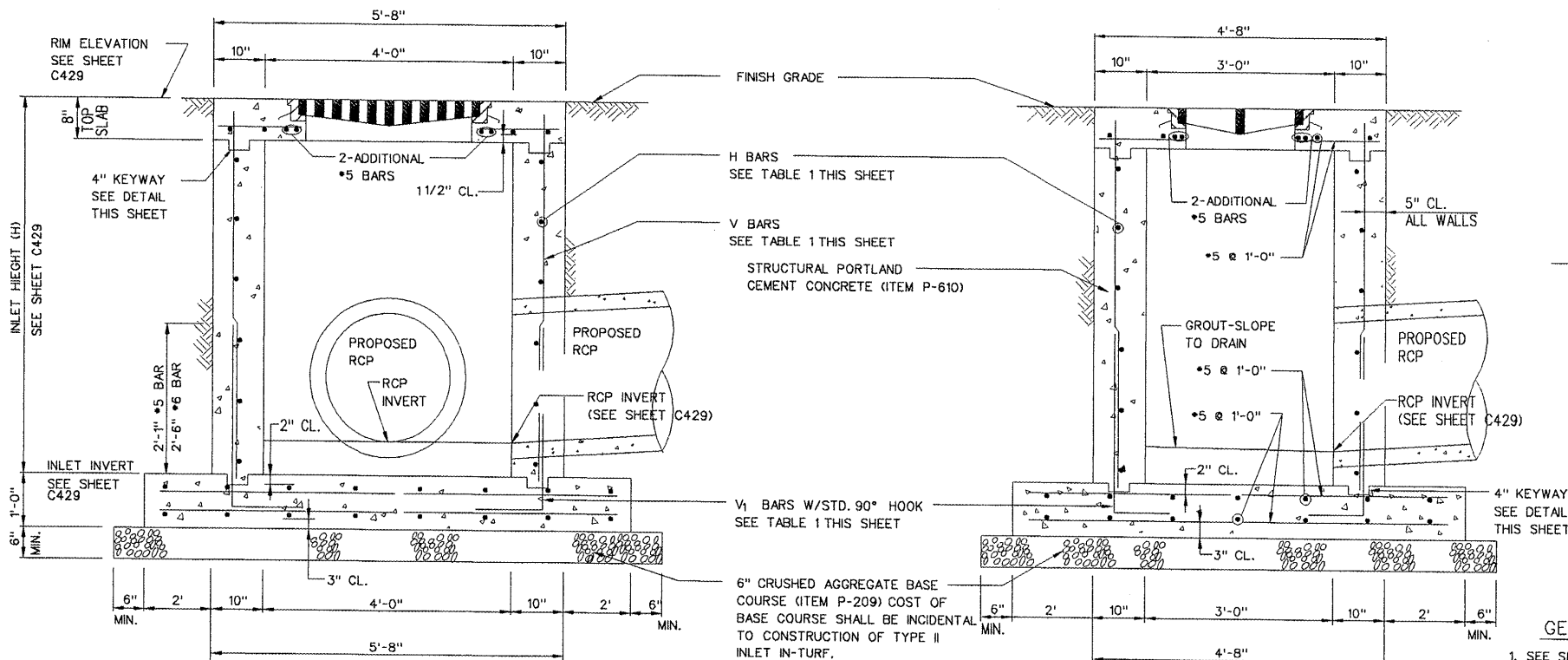
PLAN VIEW
N.T.S.



WALL REINFORCEMENT PLAN
N.T.S.



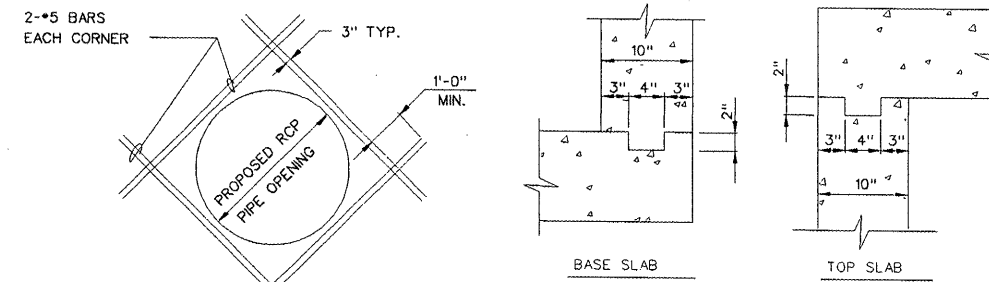
TOP SLAB REINFORCEMENT PLAN
N.T.S.



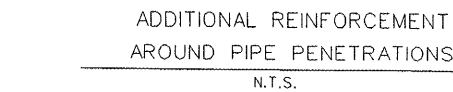
SECTION A
N.T.S.

SECTION B
N.T.S.

TYPE II INLET IN-TURF



KEYWAY DETAILS
N.T.S.



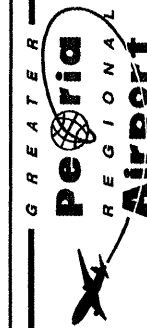
ADDITIONAL REINFORCEMENT
AROUND PIPE PENETRATIONS
N.T.S.

TABLE 1

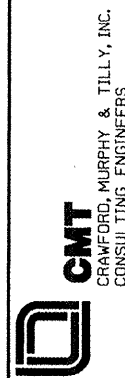
INLET HEIGHT (H)	H BARS	V AND V ₁ BARS
H ≤ 5'	#5 @ 1'-0"	#5 @ 9"
5' < H ≤ 10'	#5 @ 1'-0"	#5 @ 9"
10' < H ≤ 15' (MAX)	#6 @ 1'-0"	#6 @ 1'-0"

GENERAL NOTES

- SEE SPECIFICATIONS FOR MATERIAL REQUIREMENTS, CONSTRUCTION METHODS, BASIS OF PAYMENT, AND OTHER REQUIREMENTS.
- PIPE PENETRATION OPENINGS FOR PRECAST STRUCTURES SHALL BE CIRCULAR. DIAMETER OF OPENING SHALL BE OUTSIDE PIPE DIAMETER PLUS 6 INCHES. GROUT OPENING SOLID WITH NON-SHRINK GROUT.
- SEE DRAINAGE STRUCTURE SCHEDULES SHEET C429 FOR INLET TYPE, LOCATION, SIZE, RIM ELEVATION, AND INVERT ELEVATION.



CONSTRUCT NEW PERIMETER ROAD AND PERIMETER FENCE - PROJECT 1



IL PROJECT: PIA-3343
AIP PROJ: 3-17-0080-XX

FILE: ...024_Drainage_Details_2.dgn

DESIGN BY: TWM, RBL

DRAWN BY: CAG

CHECKED BY: RBL

APPROVED BY: CET

DATE: APRIL 24, 2008

JOB No: 0706104

DRAINAGE DETAILS
SHEET 2 OF 6

SHEET 24 OF 140 SHEETS