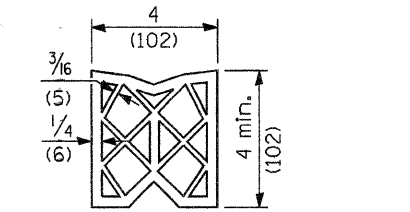
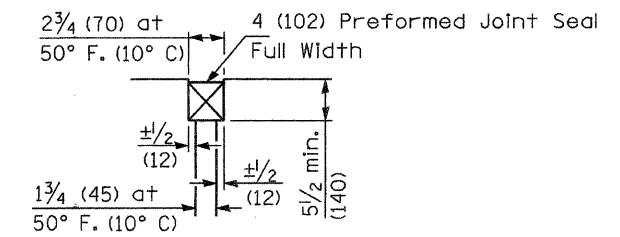


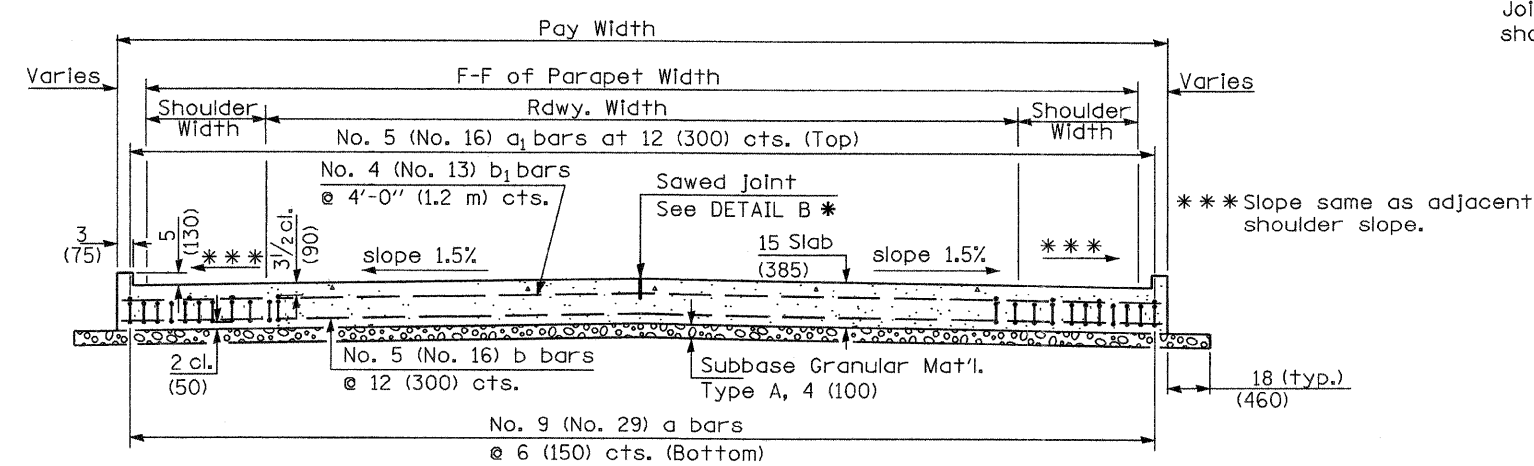
① Stagger No. 9 (No. 29) a bars as shown on plan - full width



**PREFORMED JOINT SEAL**

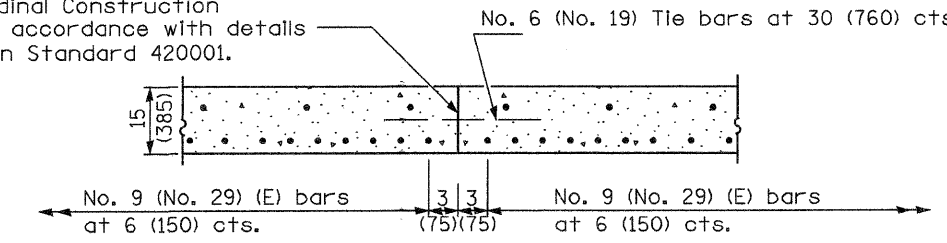


**DETAIL A**



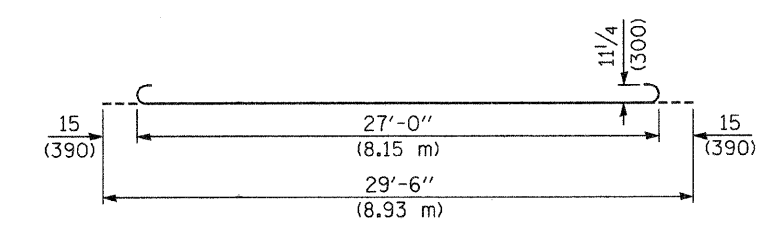
(See Plan for Dimensions not shown)

Longitudinal Construction Joint in accordance with details shown on Standard 420001.

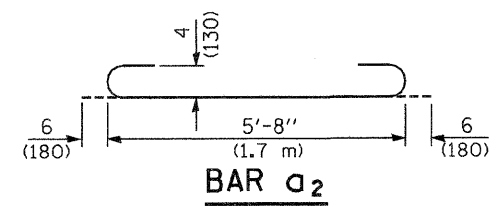


**OPTIONAL LONGITUDINAL CONSTRUCTION JOINT**

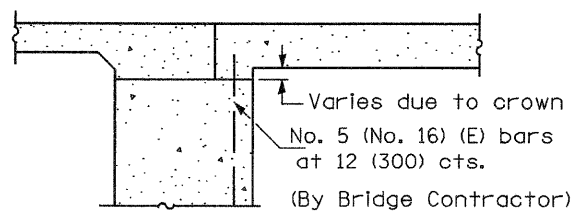
As approved by the Engineer, the Contractor may elect to reduce the widths of pour by use of the Optional Longitudinal Construction Joint shown. Joints shall be located at the edge of a traffic lane.



**BAR a**

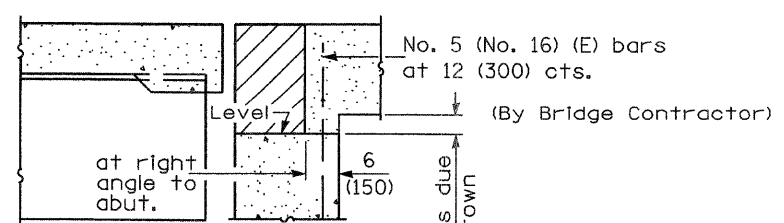


**BAR a<sub>2</sub>**



**SECTION E-E**

(Integral Abutments)



**SECTION E-E**

(Jointed Abutments)

**DESIGN STRESSES**

f<sub>y</sub> = 60,000 p.s.i. (400 MPa)  
 f'<sub>c</sub> = 3,500 p.s.i. (24 MPa)  
 n = 8.5

**BRIDGE APPROACH PAVEMENT**

(Sheet 3 of 4)

PAV. RATE	SECTION	COUNTY	TOTAL SHEETS	SHEET NO.	CONTRACT #
T4	(48-26HB-4)I	KNOX	54	54C	88919

Illinois Department of Transportation

APPROVED January 1, 2008

*Ralph E. Anderson*  
 ENGINEER OF BRIDGES AND STRUCTURES

APPROVED January 1, 2008

*Greg E. Han*  
 ENGINEER OF DESIGN AND ENVIRONMENT

ISSUED 1-1-08