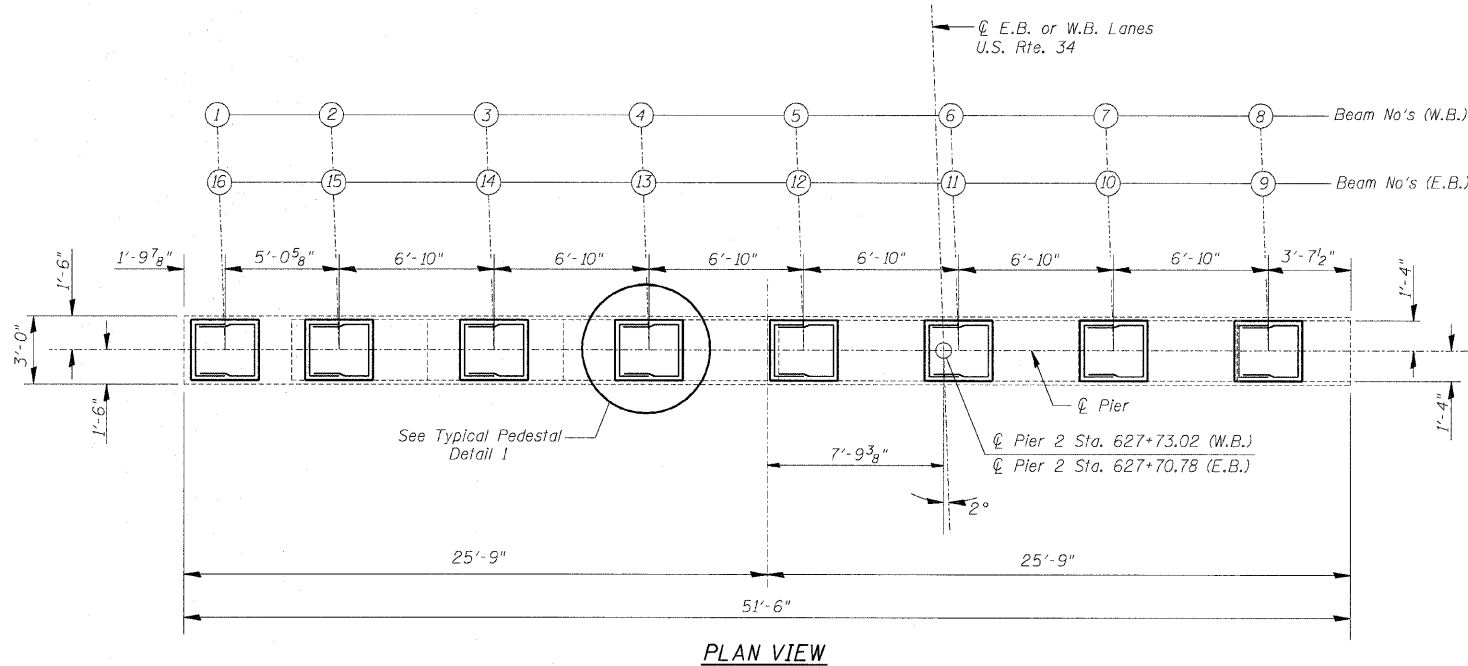
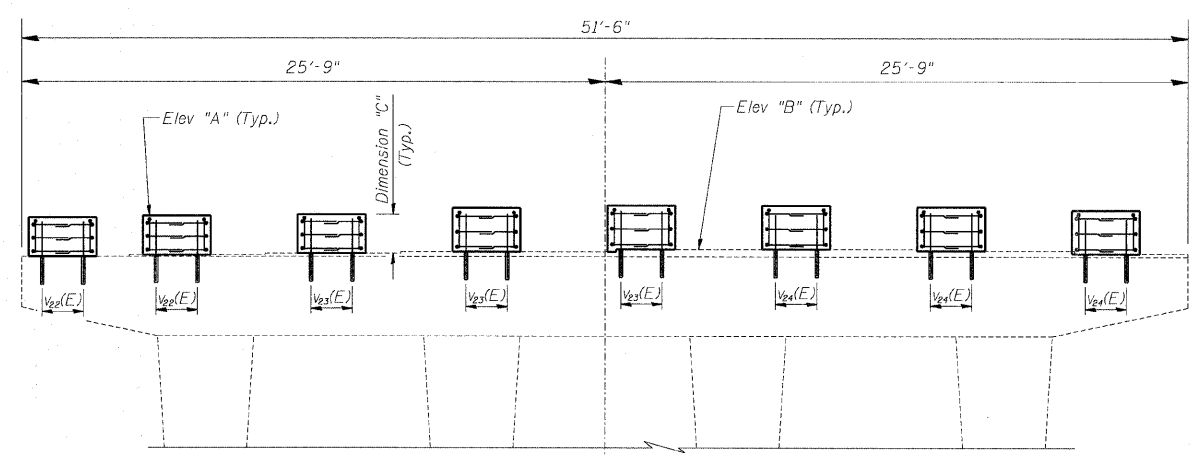


ROUTE NO.	SECTION	COUNTY	TOTAL SHEETS	SHEET NO.
F.A.I. 74	(48-26HB-4)I	KNOX	54	49
FED. ROAD DIST. NO.	ILLINOIS	PROJECT		

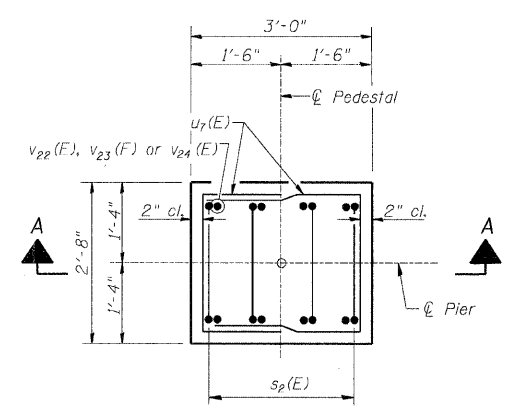
CONTRACT 88919



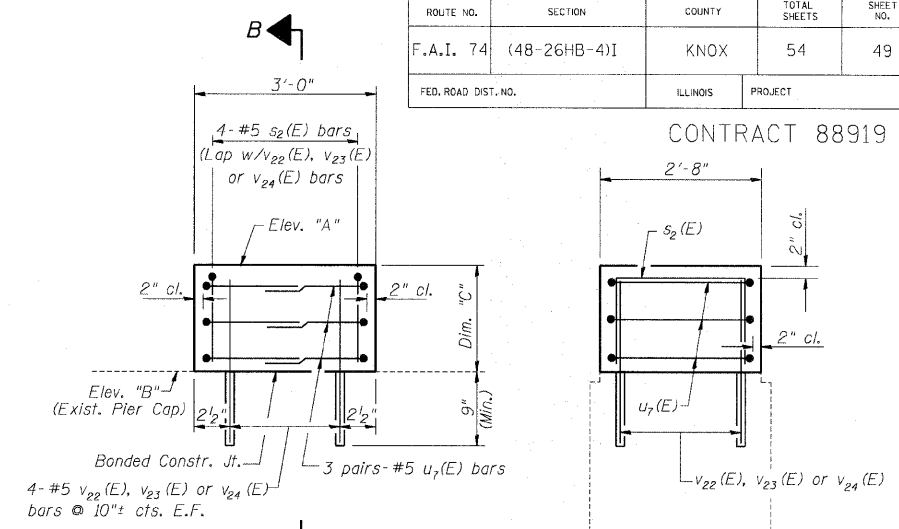
PLAN VIEW



ELEVATION



DETAIL 1



SECTION A-A

SECTION B-B

PIER 2 W.B. STRUCTURE

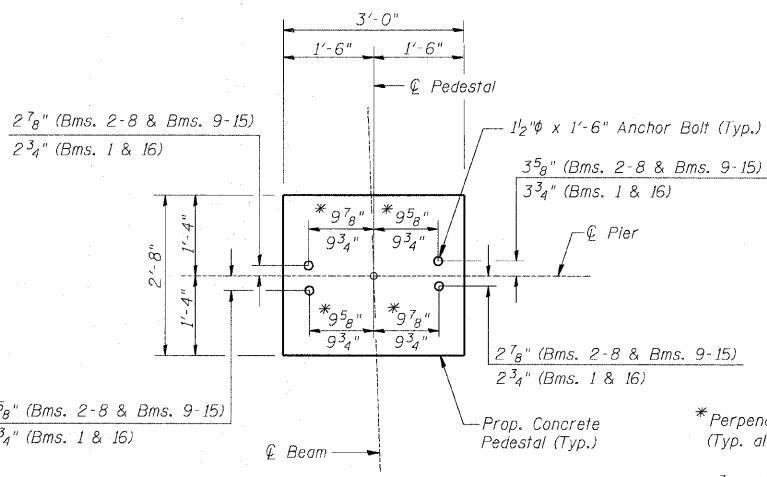
	Beam Number							
	1	2	3	4	5	6	7	8
Elevation "A"	823.56	823.66	823.80	823.95	824.06	824.14	824.04	823.92
Elevation "B"	821.87	821.94	822.01	822.07	822.18	822.18	822.12	821.97
Dimension "C"	1'-8 1/4"	1'-8 5/8"	1'-9 1/2"	1'-10 1/2"	1'-10 1/2"	1'-11 1/2"	1'-11"	1'-11 3/8"

PIER 2 E.B. STRUCTURE

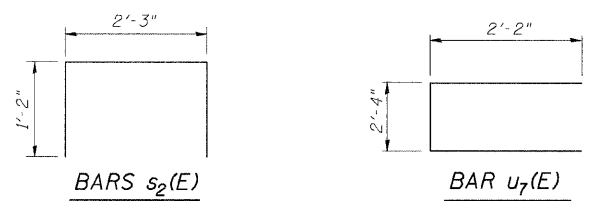
	Beam Number							
	9	10	11	12	13	14	15	16
Elevation "A"	823.92	824.04	824.14	824.06	823.95	823.80	823.66	823.56
Elevation "B"	821.99	822.15	822.19	822.19	822.08	822.02	821.96	821.89
Dimension "C"	1'-11 1/8"	1'-10 5/8"	1'-11 1/2"	1'-10 3/8"	1'-10 3/8"	1'-9 3/8"	1'-8 3/8"	1'-8"

PIER 2
BILL OF MATERIAL
E.B. & W.B. STRUCTURES

Bar	No.	Size	Length	Shape
v22(E)	32	#5	2'-3"	—
v23(E)	48	#5	2'-4"	—
v24(E)	48	#5	2'-6"	—
s2(E)	64	#5	4'-7"	□
u7(E)	96	#5	6'-8"	□
Concrete Structures			Cu. Yd.	8.1
Reinforcement Bars, Epoxy Coated			Lbs.	1300



PLAN VIEW
TYPICAL ANCHOR BOLT LAYOUT



Notes:
Reinforcement Bars designated (E) shall be epoxy coated.
Drill 9" min. deep holes into existing concrete for v22(E), v23(E), & v24(E) bars with care taken to avoid existing reinforcement. Bars to be epoxy grouted into existing concrete according to Article 584 of the Standard Specifications. (Cost included in Reinforcement Bars, Epoxy Coated)

PIER 2 - E.B. & W.B. STRUCTURES

Date	Designed ACW	U.S. ROUTE 34 OVER F.A.I. ROUTE 74 F.A.I. RTE. 74 SECTION (48-26HB-4)I KNOX COUNTY STA. 212+20.71 STRUCTURES NO. 048-0019 (WB) & 048-0020 (EB)	Sheet No.
Revisions	Drawn DCS		25
	Checked KWB		
	Approved KWB		
Prepared by: WVP CORPORATION A Division of URS Greiner Woodward Clyde		Engineers - Architects - Planners Decatur, Illinois - St. Louis, Missouri	WVP Job No. 2100001161.04