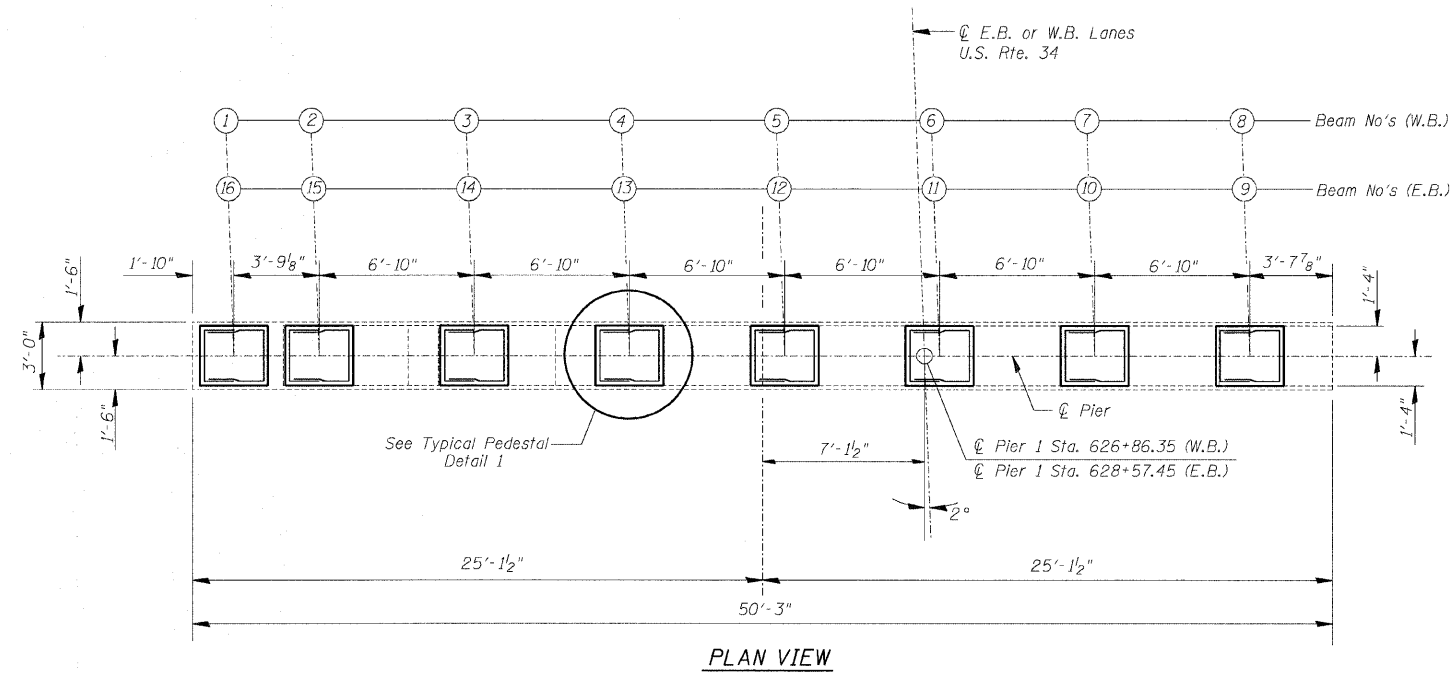
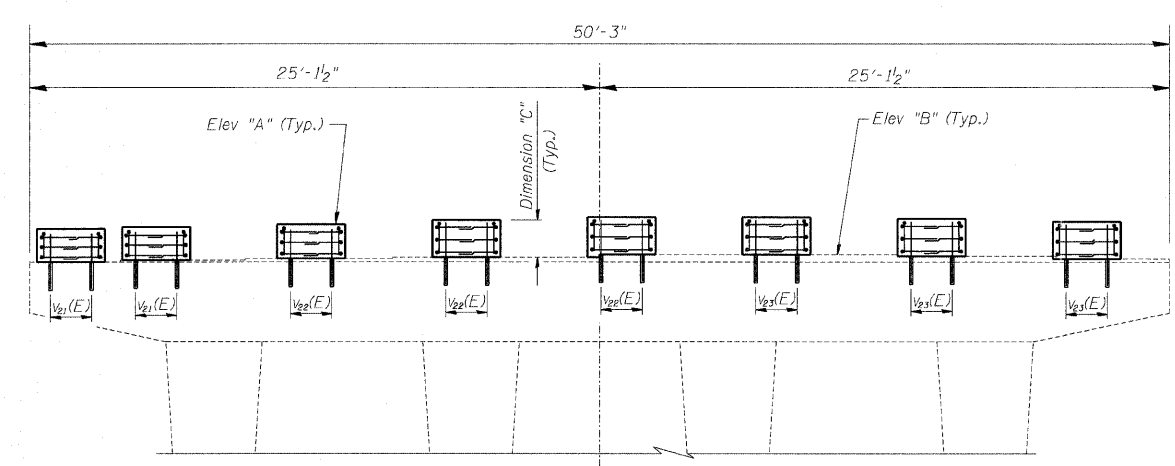


ROUTE NO.	SECTION	COUNTY	TOTAL SHEETS	SHEET NO.
F.A.I. 74	(48-26HB-4)I	KNOX	54	48
FED. ROAD DIST. NO.		ILLINOIS	PROJECT	

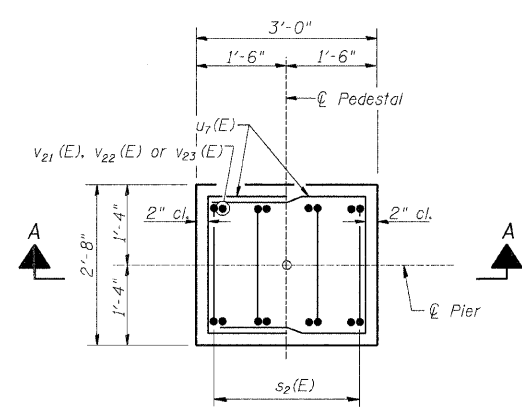
CONTRACT 88919



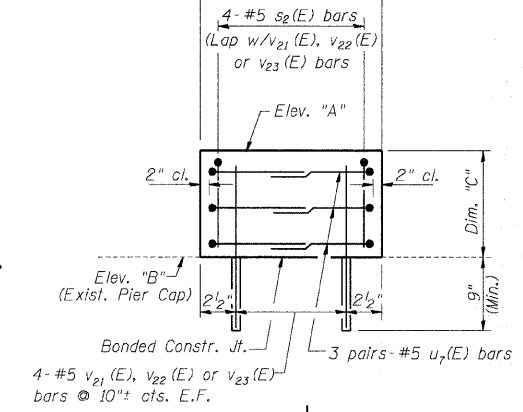
PLAN VIEW



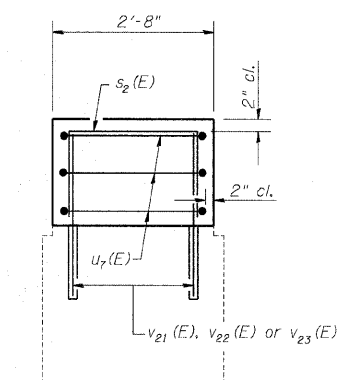
ELEVATION



DETAIL 1



SECTION A-A



SECTION B-B

PIER 1 W.B. STRUCTURE

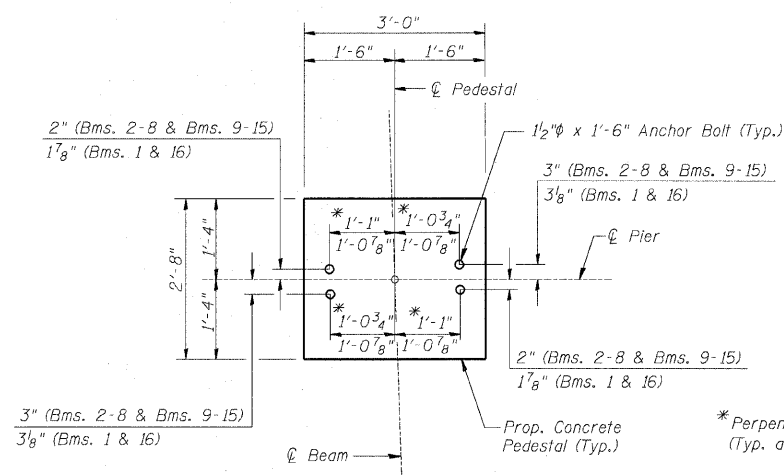
	Beam Number							
	1	2	3	4	5	6	7	8
Elevation "A"	823.30	823.38	823.52	823.66	823.77	823.86	823.75	823.63
Elevation "B"	821.71	821.79	821.87	821.94	822.06	822.06	822.00	821.85
Dimension "C"	1'-7"	1'-7"	1'-7 <sup>3</sup> / <sub>4</sub> "	1'-8 <sup>5</sup> / <sub>8</sub> "	1'-8 <sup>1</sup> / <sub>2</sub> "	1'-9 <sup>5</sup> / <sub>8</sub> "	1'-9"	1'-9 <sup>3</sup> / <sub>8</sub> "

PIER 1 E.B. STRUCTURE

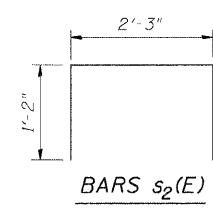
	Beam Number							
	9	10	11	12	13	14	15	16
Elevation "A"	823.63	823.75	823.86	823.78	823.66	823.52	823.38	823.30
Elevation "B"	821.86	821.99	822.07	822.07	821.95	821.88	821.83	821.73
Dimension "C"	1'-9 <sup>1</sup> / <sub>4</sub> "	1'-9 <sup>9</sup> / <sub>8</sub> "	1'-9 <sup>1</sup> / <sub>2</sub> "	1'-8 <sup>1</sup> / <sub>2</sub> "	1'-8 <sup>1</sup> / <sub>2</sub> "	1'-7 <sup>5</sup> / <sub>8</sub> "	1'-6 <sup>5</sup> / <sub>8</sub> "	1'-6 <sup>7</sup> / <sub>8</sub> "

PIER 1  
BILL OF MATERIAL  
E.B. & W.B. STRUCTURES

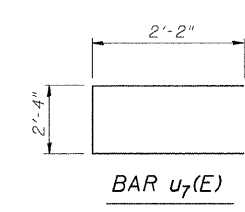
Bar	No.	Size	Length	Shape
v <sub>21</sub> (E)	32	#5	2'-1"	—
v <sub>22</sub> (E)	48	#5	2'-3"	—
v <sub>23</sub> (E)	48	#5	2'-4"	—
s <sub>2</sub> (E)	64	#5	4'-7"	□
u <sub>7</sub> (E)	96	#5	6'-8"	□
Concrete Structures			Cu. Yd.	8.0
Reinforcement Bars, Epoxy Coated			Lbs.	1280



PLAN VIEW  
TYPICAL ANCHOR BOLT LAYOUT



BARS s<sub>2</sub>(E)



BAR u<sub>7</sub>(E)

Notes:  
Reinforcement Bars designated (E) shall be epoxy coated.  
Drill 9" min. deep holes into existing concrete for v<sub>21</sub>(E), v<sub>22</sub>(E), & v<sub>23</sub>(E) bars with care taken to avoid existing reinforcement. Bars to be epoxy grouted into existing concrete according to Article 584 of the Standard Specifications. (Cost included in Reinforcement Bars, Epoxy Coated)

PIER 1 - E.B. & W.B. STRUCTURES

Date	Designed ACW	U.S. ROUTE 34 OVER F.A.I. ROUTE 74 F.A.I. RTE. 74 SECTION (48-26HB-4)I KNOX COUNTY STA. 212+20.71 STRUCTURES NO. 048-0019 (WB) & 048-0020 (EB)	Sheet No.
Revisions	Drawn DCS		<div style="font-size: 2em; font-weight: bold; text-align: center;">24</div> of 30
	Checked KWB		
	Approved KWB		
Prepared by: WVP CORPORATION A Division of URS Greiner Woodward Clyde			