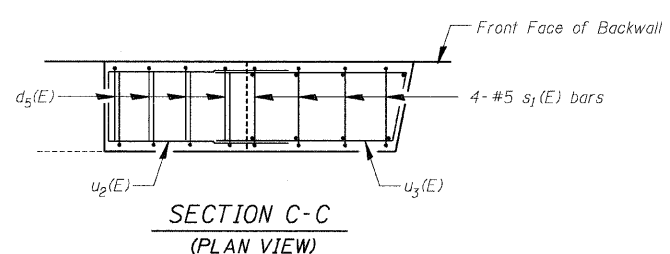
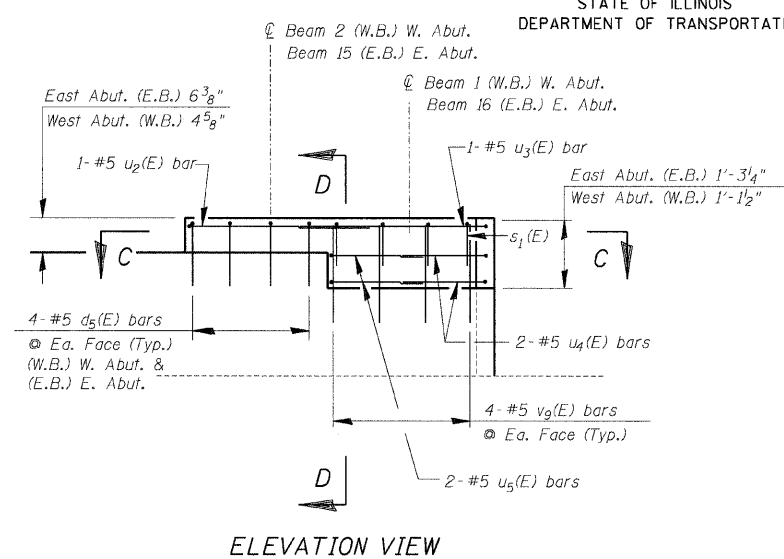
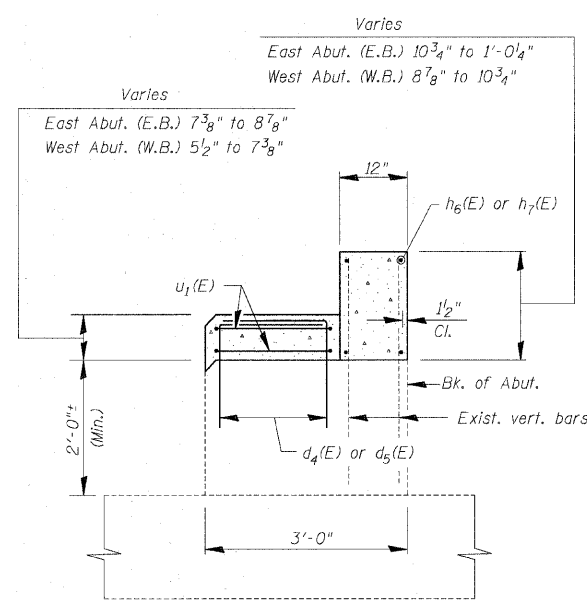


ROUTE NO.	SECTION	COUNTY	TOTAL SHEETS	SHEET NO.
F.A.I. 74	(48-26HB-4)I	KNOX	54	44
FED. ROAD DIST. NO.	ILLINOIS	PROJECT		

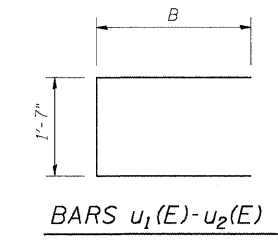
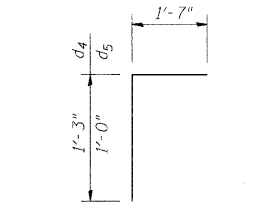
CONTRACT 88919

**BILL OF MATERIAL
EAST ABUTMENT (E.B.)
WEST ABUTMENT (W.B.)**

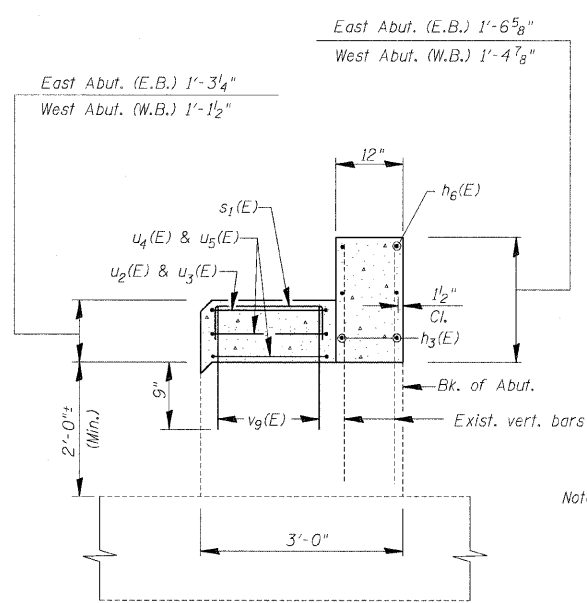
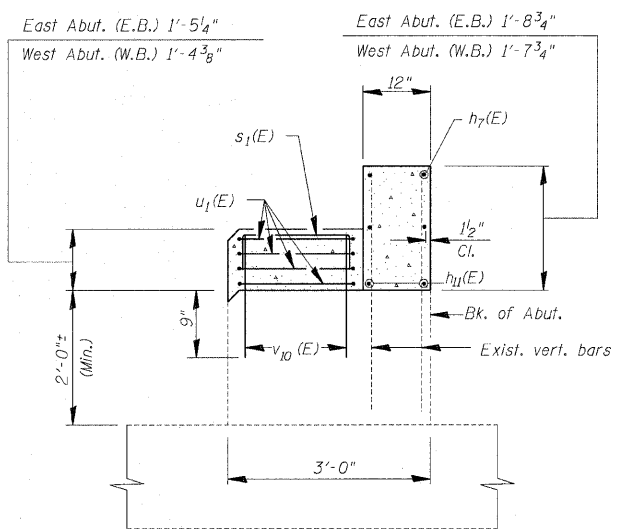
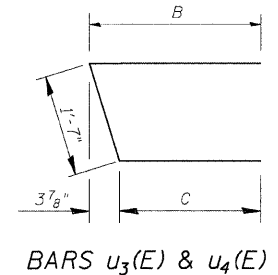
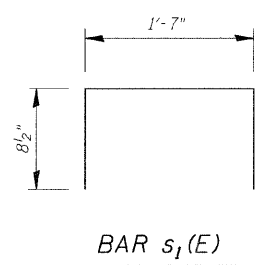
Bar	No.	Size	Length	Shape
d ₄ (E)	56	#5	2'-10"	┌
d ₅ (E)	40	#5	2'-7"	┌
h ₁ (E)	64	#5	9'-8"	—
h ₂ (E)	8	#5	10'-1"	—
h ₃ (E)	8	#5	6'-10"	—
h ₄ (E)	12	#5	5'-1"	—
h ₅ (E)	36	#5	4'-0"	—
h ₆ (E)	16	#5	17'-9"	—
h ₇ (E)	8	#5	20'-7"	—
h ₈ (E)	12	#5	8'-11"	—
h ₉ (E)	12	#5	7'-11"	—
h ₁₁ (E)	4	#5	7'-6"	—
s ₁ (E)	16	#5	3'-0"	┌
u ₁ (E)	46	#5	6'-7"	┌
u ₂ (E)	2	#5	9'-3"	┌
u ₃ (E)	2	#5	9'-9"	┌
u ₄ (E)	4	#5	6'-8"	┌
u ₅ (E)	4	#5	6'-5"	┌
v ₃ (E)	18	#5	15'-10"	—
v ₄ (E)	18	#5	15'-3"	—
v ₅ (E)	4	#5	6'-8"	—
v ₆ (E)	4	#5	8'-8"	—
v ₇ (E)	8	#5	9'-0"	—
v ₈ (E)	8	#5	4'-11"	—
v ₉ (E)	16	#5	1'-9"	—
v ₁₀ (E)	16	#5	2'-0"	—
Concrete Structures		Cu. Yd.	19.0	
Reinforcement Bars, Epoxy Coated		Lbs.	3270	
Concrete Removal		Cu. Yd.	33.2	
Structure Excavation		Cu. Yd.	35.4	
Bar Splicers		Each	8	



DOUBLE PEDESTAL REINFORCEMENT DETAIL



BAR	B	C
u ₁ (E)	2'-6"	—
u ₂ (E)	3'-10"	—
u ₃ (E)	4'-3"	3'-11"
u ₄ (E)	2'-9"	2'-4"
u ₅ (E)	2'-5"	—



- Notes:
1. Drill 9" (Min.) deep holes into existing concrete for d₄(E) and d₅(E) bars, and v₄(E) & v₁₀(E) bars, and 1'-8" deep holes for h₄(E) & h₅(E) bars & v₅(E), v₆(E), & v₈(E) bars. Drill with care taken to avoid existing reinforcement. These bars are to be epoxy grouted into these holes. This work shall be performed in accordance with Article 584 of the Standard Specifications. Cost of drilling and grouting shall be included in Reinforcement Bars, Epoxy Coated.
 2. All existing concrete surfaces which will be in contact with new concrete shall be bonded construction joints. Cost included with Concrete Structures.
 3. Reinforcement bars designated (E) shall be epoxy coated.
 4. See sheet 17 of 30 for Concrete Removal details.

EAST ABUTMENT (E.B.) - WEST ABUTMENT (W.B.)

Date	Designed ACW	U.S. ROUTE 34 OVER F.A.I. ROUTE 74 F.A.I. RTE. 74 SECTION (48-26HB-4)I KNOX COUNTY STA. 212+20.71 STRUCTURES NO. 048-0019 (WB) & 048-0020 (EB)	Sheet No.
Revisions	Drawn DCS		20
	Checked KWB		of 30
	Approved KWB		
Prepared by: WVP CORPORATION A Division of IRS Greiner Woodward Clyde		Engineers - Architects - Planners Deatur, Illinois - St. Louis, Missouri	WVP Job No. 2100001161.04