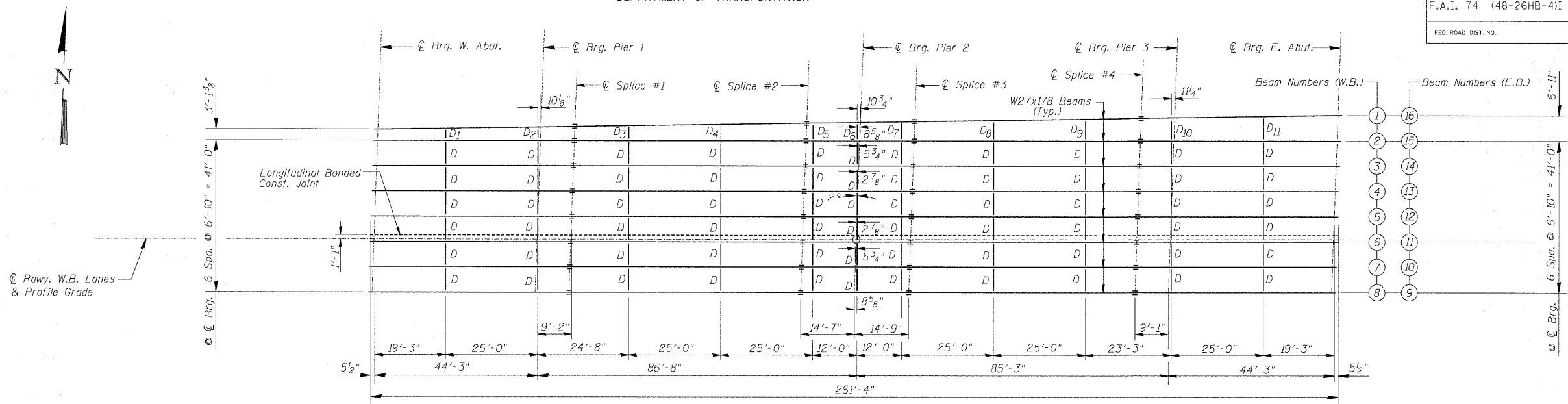


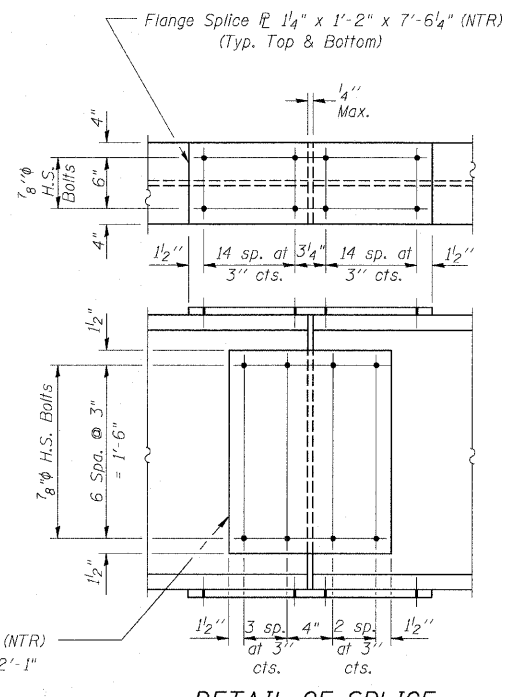
ROUTE NO.	SECTION	COUNTY	TOTAL SHEETS	SHEET NO.
F.A.I. 74	(48-26HB-4)I	KNOX	54	38
FED. ROAD DIST. NO.	ILLINOIS PROJECT			

CONTRACT 88919

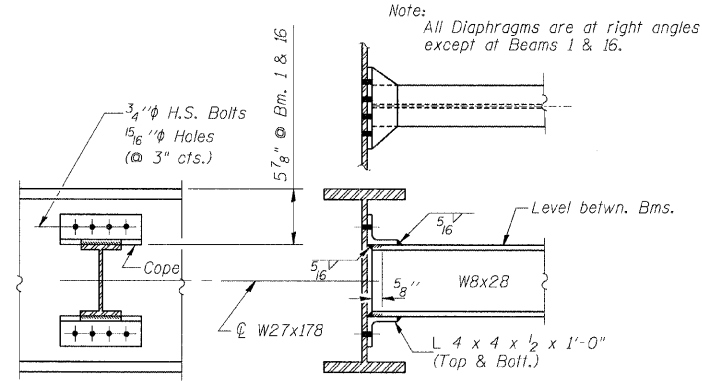


FRAMING PLAN - W.B. STRUCTURE

(E.B. Structure Same by Rotation Through 180° About Sta. 627+71.90 U.S. Rte. 34)



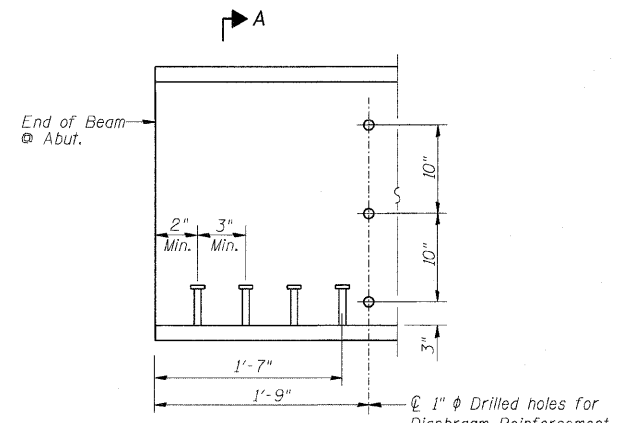
DETAIL OF SPLICE
(Splice P's: M270 Gr. 50)



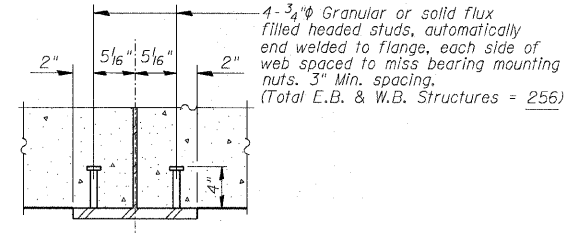
DIAPHRAGM D, & D1 thru D11

(77 Required - Ea. Struct.)
(Diaphragms: M270 Gr. 36)

Note: Two hardened washers shall be required over all oversize holes for diaphragms.



END OF BEAM ELEVATION



SECTION A-A

Note: All cross frames or diaphragms shall be installed as steel is erected and secured with erection pins and bolts except as otherwise noted. Individual cross frames or diaphragms at supports may be temporarily disconnected to install bearing anchor rods.

STRUCTURAL STEEL

Date	Designed ACW	U.S. ROUTE 34 OVER F.A.I. ROUTE 74 F.A.I. RTE. 74 SECTION (48-26HB-4)I KNOX COUNTY STA. 212+20.71 STRUCTURES NO. 048-0019 (WB) & 048-0020 (EB)	Sheet No.
Revisions	Drawn SRS		14 of 30
	Checked KWB		
	Approved KWB		
	Prepared by: WVP CORPORATION		
A Division of URS Greiner Woodward Clyde		Engineers - Architects - Planners Decatur, Illinois - St. Louis, Missouri	WVP Job No. 2100001161.04