

88919

F.A.I. RTE.	SECTION	COUNTY	TOTAL SHEETS	SHEET NO.
74	(48-26HB-4)I	KNOX	54	1
FED. ROAD DIST. NO.		ILLINOIS	FED. AID PROJECT	

54 + u = 58

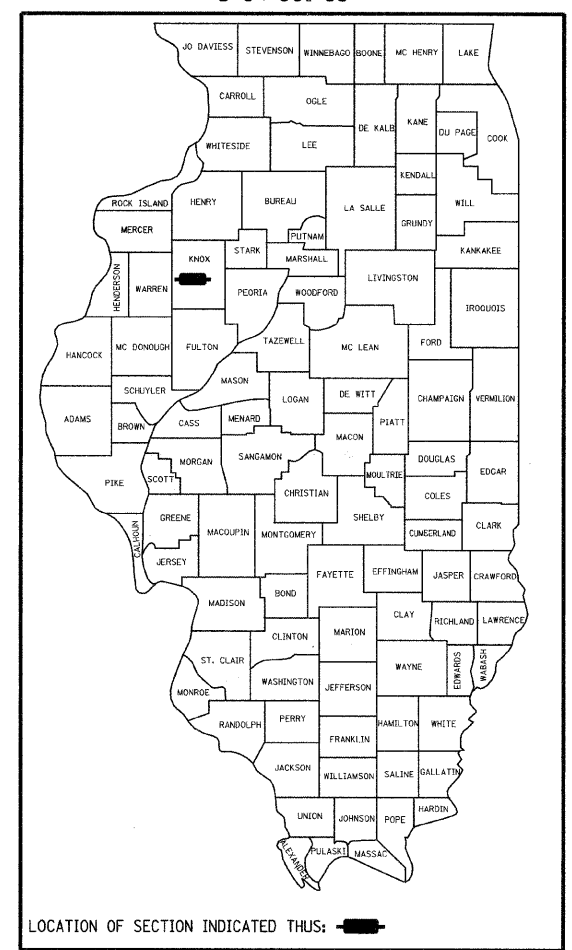
FOR INDEX OF SHEETS SEE SHEET 2

STATE OF ILLINOIS
DEPARTMENT OF TRANSPORTATION
DIVISION OF HIGHWAYS

PLANS FOR PROPOSED
FEDERAL AID HIGHWAY

F.A.I. ROUTE 74
SECTION (48-26HB-4)I
KNOX COUNTY
C - 94 - 001 - 99

D-94-001-99

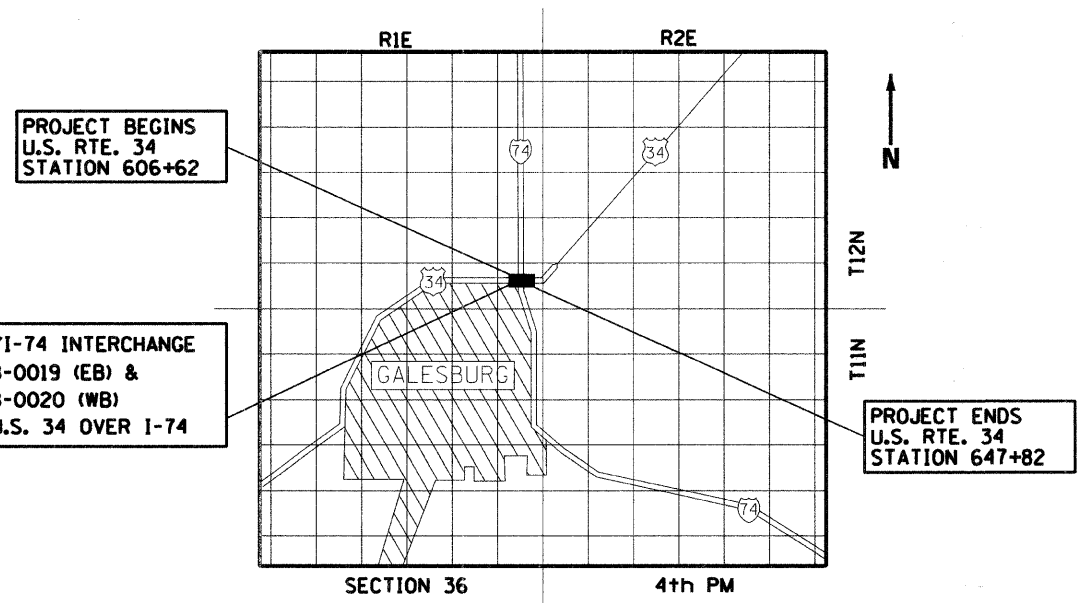
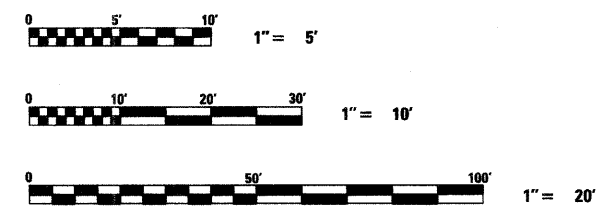


LIST OF STANDARDS

- 000001-05 STANDARD SYMBOLS, ABBREVIATIONS AND PATTERNS
- 483001-04 PCC SHOULDER.
- 515001-03 NAME PLATE FOR BRIDGES
- 601101-01 CONCRETE HEADWALL FOR PIPE DRAINS
- 631031-07 TRAFFIC BARRIER TERMINAL, TYPE 6
- 635006-03 REFLECTOR AND TERMINAL MARKER PLACEMENT
- 635011-02 REFLECTOR MARKER AND MOUNTING DETAILS
- 667101-01 PERMANENT SURVEY MARKERS
- 701101-02 OFF-ROAD OPERATIONS, MULTILANE, 15' TO 24" FROM PAV'T EDGE
- 701106-02 OFF-ROAD OPERATIONS, MULTILANE, MORE THAN 15' AWAY
- 701400-03 APPROACH TO LANE CLOSURE, FREEWAY/EXPRESSWAY
- 701401-05 LANE CLOSURE, FREEWAY/EXPRESSWAY
- 701402-07 LANE CLOSURE, FREEWAY/EXPRESSWAY, WITH BARRIER
- 701406-05 LANE CLOSURE, FREEWAY/EXPRESSWAY, DAY OPERATIONS ONLY
- 701411-05 LANE CLOSURE, MULTILANE, AT ENTRANCE OR EXIT RAMP, FOR SPEEDS >45 MPH
- 701901-01 TRAFFIC CONTROL DEVICES
- 704001-05 TEMPORARY CONCRETE BARRIER
- 780001-02 TYPICAL PAVEMENT MARKINGS
- 781001-03 TYPICAL APPLICATIONS RAISED REFLECTIVE PAVEMENT MARKERS

PROJECT DESCRIPTION

THIS PROJECT CONSISTS OF SUBSTRUCTURE REPAIR AND REPLACING THE EXISTING DECK & SUPERSTRUCTURE OF S.N. 048-0019 & 0020, WHICH CARRY US 34 OVER I-74 AT THEIR INTERCHANGE IN GALESBURG.



LOCATION MAP

1" = ±1 MILE

GROSS LENGTH OF IMPROVEMENT = 4120 FEET (0.780 MILES)
NET LENGTH OF IMPROVEMENT = 4120 FEET (0.780 MILES)

STATE OF ILLINOIS
DEPARTMENT OF TRANSPORTATION
DIVISION OF HIGHWAYS

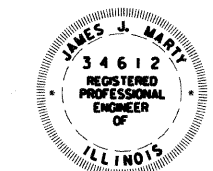
SUBMITTED April 10, 2009

James J. Marty
DEPUTY DIRECTOR OF HIGHWAYS, REGION ENGINEER

Charles J. Ingersoll
ENGINEER OF DESIGN AND ENVIRONMENT

Christine M. Reed
DIRECTOR OF HIGHWAYS, CHIEF ENGINEER

PRINTED BY THE AUTHORITY
OF THE STATE OF ILLINOIS



Date: 4-6-09

James J. Marty
Ill. Professional No. 34612
EXP 11-30-09

DESIGNED BY: WVP CORPORATION
DECATUR, IL
CONTACT PERSON: JIM MARTY
PHONE: (217)875-4800

PROJECT ENGINEER: JIM MILLER (309) 671-3451

J.U.L.I.E.
JOINT UTILITY LOCATION INFORMATION FOR EXCAVATION
1-800-892-0123
(PROJECT LOCATED IN MOUND TOWNSHIP)

CONTRACT NO. 88919
CATALOG NO. 030396-03D