

F.A. RTE.	SECTION	COUNTY	TOTAL SHEETS	SHEET NO.
FA157	77-(3,2)RS-3	PULASKI	17	1
		ILLINOIS	CONTRACT NO. 78118	

STATE OF ILLINOIS
DEPARTMENT OF TRANSPORTATION
DIVISION OF HIGHWAYS
**PROPOSED
HIGHWAY PLANS**

ROUTE I-57 (FAI 57)
SECTION 77-(3,2)RS-3

INTERSTATE RESURFACING
PULASKI COUNTY

C-99-042-09

FOR INDEX OF SHEETS, SEE SHEET NO. 2

TRAFFIC DATA (NORTHBOUND LANES)
2008 ADT = 5470 WITH 48% TRUCKS

TOWNSHIPS: PULASKI, VILLA RIDGE

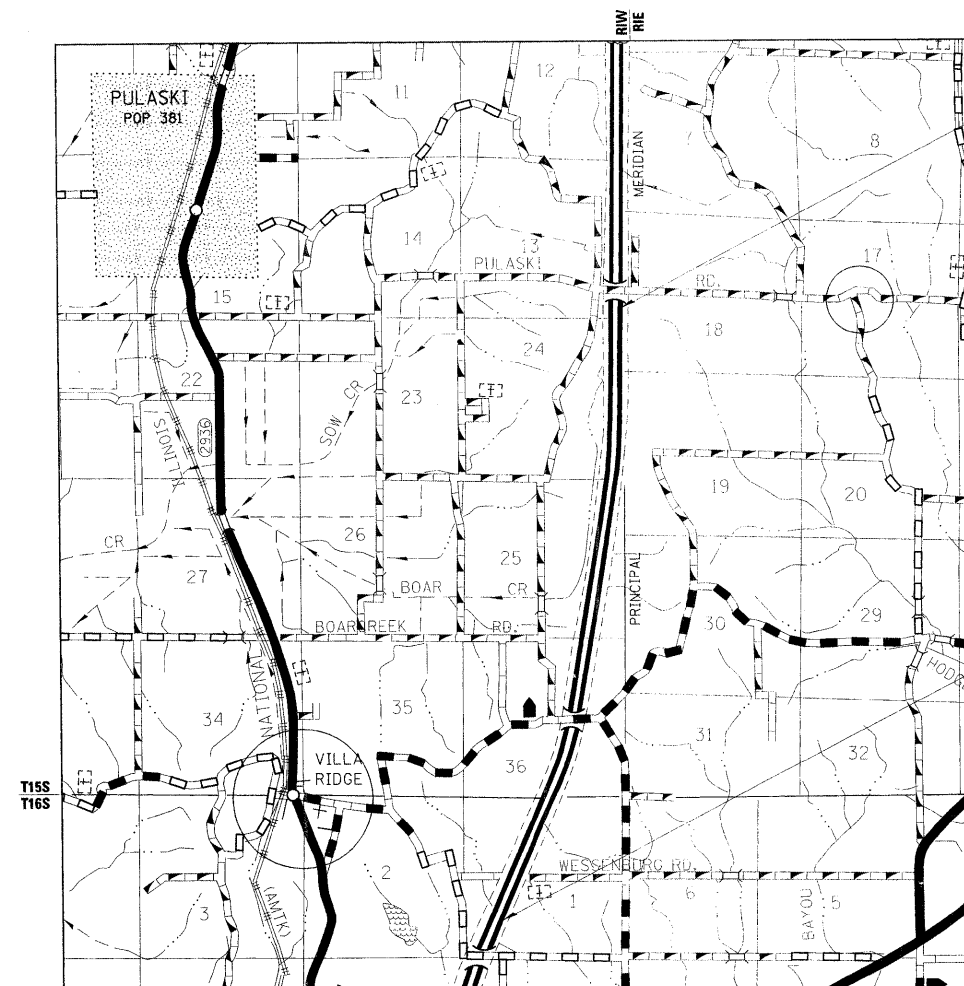
0 50' 100' 1" = 50' PLAN SHEETS

FULL SIZE PLANS HAVE BEEN PREPARED USING STANDARD ENGINEERING SCALES. REDUCED SIZED PLANS WILL NOT CONFORM TO STANDARD SCALES. IN MAKING MEASUREMENTS ON REDUCED PLANS, THE ABOVE SCALES MAY BE USED.

J.U.L.I.E.
JOINT UTILITY LOCATION INFORMATION FOR EXCAVATION
1-800-892-0123
OR 811

PROJECT ENGINEER - PATRICK NAAS
PROJECT MANAGER - SUSAN POE

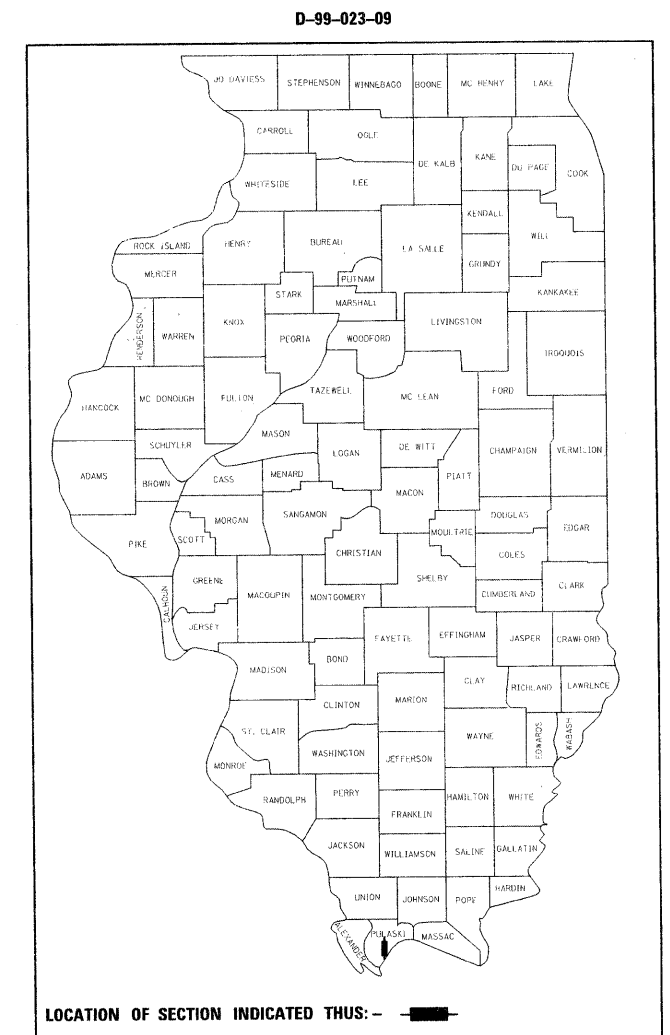
CONTRACT NO. 78118



IMPROVEMENT BEGINS
STA. 472 + 20

IMPROVEMENT ENDS
STA. 688 + 95

GROSS LENGTH = 21675 FT. = 4.105 MILE
NET LENGTH = 21675 FT. = 4.105 MILE



STATE OF ILLINOIS
DEPARTMENT OF TRANSPORTATION
DIVISION OF HIGHWAYS

SUBMITTED April 8 2009
Mary C. Samel
DEPUTY DIRECTOR OF HIGHWAYS, REGION ENGINEER
May 1, 2009
Charles J. Ingersoll
ENGINEER OF DESIGN AND ENVIRONMENT
May 1, 2009
Christine M. Reed
DIRECTOR OF HIGHWAYS, CHIEF ENGINEER

**PRINTED BY THE AUTHORITY
OF THE STATE OF ILLINOIS**

GENERAL NOTES

FACTORS USED FOR ESTIMATING PLAN QUANTITIES ARE AS FOLLOWS AND SHALL NOT BE USED FOR THE BASIS OF FINAL QUANTITIES:

ALL HOT-MIX ASPHALT
2.016 TONS/CU. YD.

BITUMINOUS MATERIALS:

ALL AGGREGATE
2.05 TONS/CU. YD.

ON PAVEMENT
0.09 GAL./SQ. YD.

RIPRAP
1.50 TONS/CU. YD.

INTERMEDIATE LIFTS (FOG COAT)
0.04 GAL./SQ. YD.

AGGREGATE (PRIME COAT)
0.0015 TONS/SQ. YD.

ON AGGREGATE SURFACE
0.32 GAL./SQ. YD.

THE QUANTITY OF SHORT TERM PAVEMENT MARKING SHOWN IN THE PLANS IS BASED ON APPLICATIONS FOR HOT-MIX ASPHALT SURFACE REMOVAL, HOT-MIX ASPHALT BINDER COURSE AND HOT-MIX ASPHALT SURFACE COURSE.

THE CONTRACTOR SHALL STAMP STATIONING IN THE FINAL ASPHALT SURFACE AT 300 FT. INTERVALS ON THE OUTSIDE EDGE OF PAVEMENT AND AS DIRECTED BY THE ENGINEER. THE STATION SYMBOL STAMPS USED SHALL BE FURNISHED BY THE CONTRACTOR. THEY SHALL BE 5 1/2 IN. TALL OF A DESIGN APPROVED BY THE ENGINEER, AND SHALL REMAIN THE PROPERTY OF THE CONTRACTOR.

WHEN AT THE END OF A DAY'S OPERATION THE EXPOSED CENTERLINE EDGE IS GREATER THAN 2,000 FT., THE CONTRACTOR SHALL BE REQUIRED TO PAVE IN THE ADJACENT LANE ON THE FOLLOWING WORK DAY. PRIOR TO WINTER SHUTDOWN, RESURFACING ON ADJACENT LANES IS TO BE BROUGHT UP TO THE SAME ELEVATION.

SAW CUTS REQUIRED FOR BUTT JOINTS SHALL NOT BE PAID FOR SEPARATELY BUT SHALL BE INCLUDED IN THE COST OF THE BUTT JOINT.

IN ADDITION TO THE REQUIREMENTS OF ARTICLE 406.06 (e), THE CONTRACTOR SHALL USE STRINGLINE GRADE CONTROL AT ANY OTHER LOCATIONS SPECIFIED IN THE PLANS. THIS WORK SHALL BE INCLUDED IN THE COST OF PAVING.

PRIOR TO PLACEMENT OF THE FINAL PAVEMENT MARKINGS THE RESIDENT ENGINEER SHOULD CONTACT THE BUREAU OF OPERATIONS AND ARRANGE FOR INSPECTION AND APPROVAL OF THE PAVEMENT MARKING LAYOUT.

DURING MAINLINE MILLING OPERATIONS THE CONTRACTOR SHALL MILL A SECTION OF EXISTING ASPHALT SHOULDER 1 1/2" DEEP EVERY 500 FEET OR AS DIRECTED BY THE ENGINEER TO PROVIDE DRAINS FOR SURFACE WATER ON THE MAINLINE PAVEMENT.

ANY DAMAGE DONE TO EXISTING PAVED DITCH DURING TREE REMOVAL SHALL BE REPAIRED AT THE CONTRACTORS EXPENSE.

INDEX OF SHEETS

SHEET NO.	DESCRIPTION
1	COVER SHEET
2	INDEX OF SHEETS, HIGHWAY STANDARDS, GENERAL NOTES, & MIXTURE REQUIREMENTS
3	SUMMARY OF QUANTITIES
4	TYPICAL SECTION
5	SCHEDULE OF QUANTITIES
6-13	PLAN SHEETS
14	DETAILS: RESURFACING TRANSITIONS
15	DETAILS: OLMSTEAD ROAD OVERPASS
16	DETAILS: STONE RIPRAP DITCH
17	DETAILS: ROUGH GROOVED SURFACE SIGN UNEVEN LANES SIGN; TEMP HMA TRANSITIONS MEDIAN CROSSOVER APRON

MIXTURE REQUIREMENTS

LOCATION(S):	POLYMERIZED HOT-MIX ASPHALT SURFACE COURSE
MIXTURE USE(S):	POLYMERIZED HOT-MIX ASPHALT SURFACE COURSE, MIX D, N105
AC/PG:	SBS PG76-22
RAP % (MAX):	0
DESIGN AIR VOIDS:	4.0 %, 105 CYRATION DESIGN
MIXTURE COMPOSITION: (GRADATION MIXTURE)	IL-9.5 MM OR IL-12.5 MM
FRICTION AGGREGATE:	D SURFACE

LOCATION(S):	POLYMERIZED HOT-MIX ASPHALT BINDER COURSE
MIXTURE USE(S):	POLYMERIZED HOT-MIX ASPHALT BINDER COURSE, N105, IL-19.0
AC/PG:	SBS PG76-22
RAP % (MAX):	0
DESIGN AIR VOIDS:	4.0 %, 105 CYRATION DESIGN
MIXTURE COMPOSITION: (GRADATION MIXTURE)	IL-19.0 MM
FRICTION AGGREGATE:	NONE

LOCATION(S):	HOT-MIX ASPHALT SHOULDERS,
MIXTURE USE(S):	HOT-MIX ASPHALT SHOULDERS
AC/PG:	PG58-22
RAP % (MAX):	50
DESIGN AIR VOIDS:	2.0 %, 30 CYRATION DESIGN
MIXTURE COMPOSITION: (GRADATION MIXTURE)	HMA SHOULDERS
FRICTION AGGREGATE:	NONE

LOCATION(S):	POLYMERIZED BITUMINOUS MATERIALS (PRIME COAT)
MIXTURE USE(S):	POLYMER MODIFIED EMULSIFIED ASPHALT
REQUIREMENTS:	SS-1HP OR CSS-1HP

HIGHWAY STANDARDS

000001-05	STANDARD SYMBOLS, ABBREVIATIONS, AND PATTERNS
630001-08	STEEL PLATE BEAM GUARDRAIL
631033-03	TRAFFIC BARRIER TERMINAL, TYPE 6B
635001-01	DELINEATORS
635006-03	REFLECTOR AND TERMINAL MARKER PLACEMENT
635011-02	REFLECTOR MARKER AND MOUNTING DETAILS
642001-02	SHOULDER RUMBLE STRIPS
701101-02	OFF-ROAD OP, MULTILANE, 15' TO 24" FROM PAVEMENT EDGE
701106-02	OFF-ROAD OP, MULTILANE, MORE THAN 15' AWAY
701400-03	APPROACH TO LANE CLOSURE, FREEWAY/EXPRESSWAY
701401-05	LANE CLOSURE, FREEWAY/EXPRESSWAY
701406-05	LANE CLOSURE, FREEWAY/EXPRESSWAY, DAY OPERATIONS ONLY
701426-03	LANE CLOSURE, MULTILANE, INTERMITTENT OR MOVING OPERATION, FOR 45MPH+
701901-01	TRAFFIC CONTROL DEVICES
780001-02	TYPICAL PAVEMENT MARKINGS
781001-03	TYPICAL APPLICATIONS RAISED REFLECTIVE PAVEMENT MARKERS
280001-04	TEMPORARY EROSION CONTROL SYSTEMS

COMMITMENTS

NONE

Prepared By:	<i>Joe Polanski</i> DISTRICT STUDIES & PLANS ENGINEER
Examined By:	<i>James Travis</i> DISTRICT LAND ACQUISITION ENGINEER
Examined By:	<i>Carrie Nelson</i> DISTRICT PROGRAM DEVELOPMENT ENGINEER
Examined By:	<i>Keith Wiley</i> DISTRICT OPERATIONS ENGINEER
Examined By:	<i>Jim Amthuis</i> DISTRICT CONSTRUCTION ENGINEER
Examined By:	<i>Bruce W. Pugh</i> DISTRICT MATERIALS ENGINEER
Examined By:	<i>Jim Amthuis</i> DISTRICT PROJECT IMPLEMENTATION ENGINEER
Examined By:	<i>Danny Clayton</i> ASSISTANT REGIONAL ENGINEER
Approved By:	<i>Mary C. Romo</i> DEPUTY DIRECTOR OF HIGHWAYS, REGION ENGINEER
DATE	April 8 2009

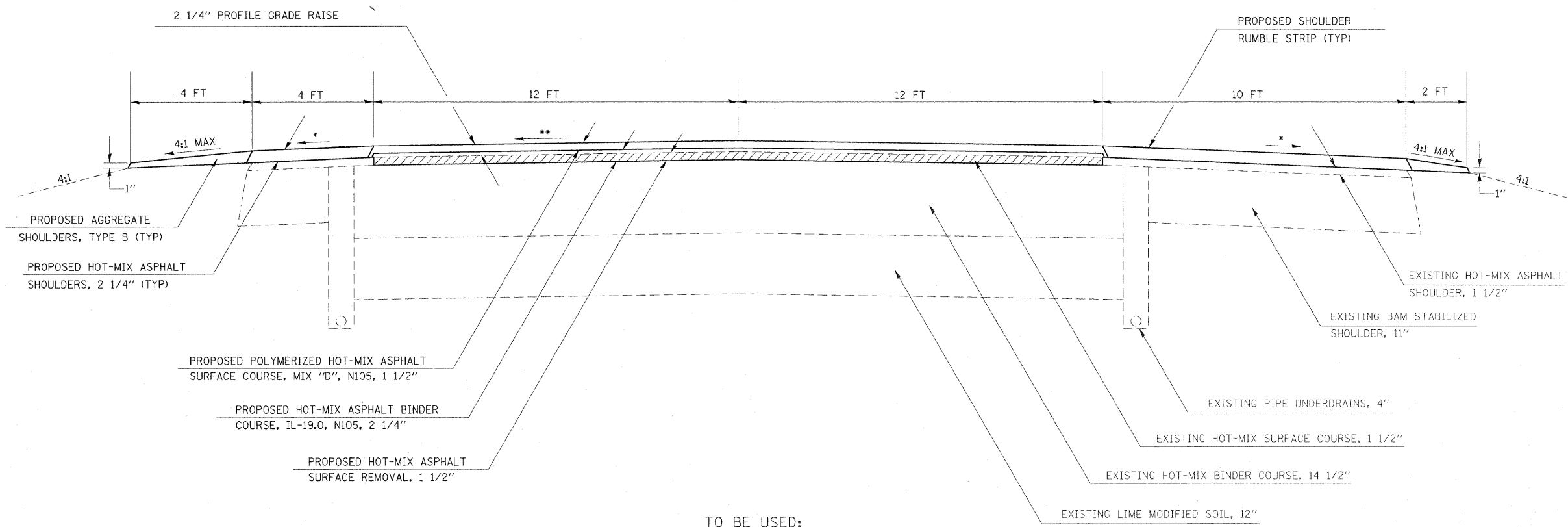
FILE NAME =	USER NAME = naasdp	DESIGNED =	REVISED =	STATE OF ILLINOIS DEPARTMENT OF TRANSPORTATION	GENERAL NOTES, INDEX OF SHEETS & HIGHWAY STANDARDS	F.A.I. RTE.	SECTION	COUNTY	TOTAL SHEETS	SHEET NO.		
ct:\p\work\p\wdot\1\naasdp\d0123680\78118	ght-schedule.dgn	DRAWN =	REVISED =			FAI57	77-(3,2)RS-3	PULASKI	17	2		
	PLOT SCALE = 50.0000 / / IN.	CHECKED =	REVISED =			CONTRACT NO. 78118						
	PLOT DATE = 3/12/2009	DATE =	REVISED =			SCALE:	SHEET NO.	OF	SHEETS	STA.	TO STA.	FED. ROAD DIST. NO.

SUMMARY OF QUANTITIES

CODE NO.	ITEM	CONSTRUCTION TYPE CODE	
		UNIT	TOTAL QUANTITIES 100% STATE
20100110	TREE REMOVAL (6 TO 15 UNITS DIAMETER)	UNIT	72
20100210	TREE REMOVAL (OVER 15 UNITS DIAMETER)	UNIT	24
20101400	NITROGEN FERTILIZER NUTRIENT	POUND	217
20101500	PHOSPHORUS FERTILIZER NUTRIENT	POUND	163
20101600	POTASSIUM FERTILIZER NUTRIENT	POUND	163
25000700	AGRICULTURAL GROUND LIMESTONE	TON	2.71
25001010	SEEDING, CLASS 2 (MODIFIED)	ACRE	1.36
25100115	MULCH, METHOD 2	ACRE	2.71
28000250	TEMPORARY EROSION CONTROL SEEDING	POUND	136
28000400	PERIMETER EROSION BARRIER	FOOT	3453
28000600	SEEDING, CLASS 7	ACRE	1.36
28102600	STONE RIPRAP DITCH	TON	964
40600115	POLYMERIZED BITUMINOUS MATERIALS(PRIME COAT)	GALLON	8237
40600300	AGGREGATE (PRIME COAT)	TON	137
40600895	CONSTRUCTING TEST STRIP	EACH	2
40600982	HOT-MIX ASPHALT SURFACE REMOVAL - BUTT JOINT	SQ YD	280
40600990	TEMPORARY RAMP	SQ YD	84
40603245	POLYMERIZED HOT-MIX ASPHALT BINDER COURSE, IL-19.0, N105	TON	7283
40603550	POLYMERIZED HOT-MIX ASPHALT SURFACE COURSE, MIX "D", N105	TON	4870
44000155	HOT-MIX ASPHALT SURFACE REMOVAL, 1 1/2"	SQ YD	57000
44000156	HOT-MIX ASPHALT SURFACE REMOVAL, 1 3/4"	SQ YD	249
44000162	HOT-MIX ASPHALT SURFACE REMOVAL, 3 1/4"	SQ YD	427
44000198	HOT-MIX ASPHALT SURFACE REMOVAL, VARIABLE DEPTH	SQ YD	591
48101200	AGGREGATE SHOULDERS, TYPE B	TON	1266
48203006	HOT-MIX ASPHALT SHOULDERS, 2 1/4"	SQ YD	33717
* 63000002	STEEL PLATE BEAM GUARD RAIL, TYPE A, 6.75 FOOT POSTS	FOOT	225
* 63100089	TRAFFIC BARRIER TERMINAL, TYPE 6B	EACH	1
* 63100167	TRAFFIC BARRIER TERMINAL, TYPE 1 (SPECIAL) TANGENT	EACH	1
63200310	GUARDRAIL REMOVAL	FOOT	219
63500105	DELINEATORS	EACH	54
63500120	DELINEATOR REMOVAL	EACH	48
64200105	SHOULDER RUMBLE STRIP	FOOT	43350
67000200	ENGINEER'S FIELD OFFICE, TYPE A	CAL MO	3
67100100	MOBILIZATION	L SUM	1
70100700	TRAFFIC CONTROL AND PROTECTION, STANDARD 701406	L SUM	1
70100800	TRAFFIC CONTROL AND PROTECTION, STANDARD 701401	L SUM	1
70106800	CHANGEABLE MESSAGE SIGN	CAL MO	0.5
70300100	SHORT-TERM PAVEMENT MARKING	FOOT	7614
70300220	TEMPORARY PAVEMENT MARKING - LINE 4"	FOOT	48769
70301000	WORK ZONE PAVEMENT MARKING REMOVAL	SQ FT	18932
* 78004210	PERFORMED PLASTIC PAVEMENT MARKING, TYPE B - INLAID - LINE 4"	FOOT	48769
* 78100100	RAISED REFLECTIVE PAVEMENT MARKER	EACH	271
* 78200420	GUARDRAIL MARKERS, TYPE B	EACH	3
* 78201000	TERMINAL MARKER - DIRECT APPLIED	EACH	1
78300200	RAISED REFLECTIVE PAVEMENT MARKER REMOVAL	EACH	271
X0322729	MATERIAL TRANSFER DEVICE	TON	12153

TYPICAL SECTION

PULASKI COUNTY
 NORTHBOUND LANES
 F. A. I. RTE. 57
 (LOOKING IN DIRECTON OF TRAVEL)



TO BE USED:
 STA 472+20 TO 688+95

* MATCH EXISTING SHOULDER SLOPE UP TO 6% MAXIMUM
 ** MATCH EXISTING SLOPE

FILE NAME =	USER NAME = nneadp	DESIGNED -	REVISED -	STATE OF ILLINOIS DEPARTMENT OF TRANSPORTATION	TYPICAL SECTION				F.A. RTE.	SECTION	COUNTY	TOTAL SHEETS	SHEET NO.
ca\pw_work\VPW\DOT\NAASDP\d0123680\78118	sht-details.dgn	DRAWN -	REVISED -						FAI57	77-(3,2)RS-3	PULASKI	17	4
	PLOT SCALE = 2.0250' / IN.	CHECKED -	REVISED -		CONTRACT NO. 78118				ILLINOIS FED. AID PROJECT				
	PLOT DATE = 3/12/2009	DATE -	REVISED -		SCALE:	SHEET NO.	OF SHEETS	STA.	TO STA.				

SURFACE REMOVAL & RESURFACING SCHEDULE

LOCATION STATION TO STATION	HOT-MIX ASPHALT SURFACE REMOVAL 1 1/2" (SQ YD)	HOT-MIX ASPHALT SURFACE REMOVAL VAR. DEPTH (SQ YD)	HOT-MIX ASPHALT SURFACE REMOVAL 3 1/4" (SQ YD)	HOT-MIX ASPHALT SURFACE REMOVAL 1 3/4" (SQ YD)	POLYMERIZED HOT-MIX ASPHALT BINDER COURSE IL-19.0, N105 2 1/4" (TON)	POLYMERIZED HOT-MIX ASPHALT SURFACE COURSE MIX "D", N105 (TON)	HOT-MIX ASPHALT SHOULDERS 2 1/4" (SQ YD)	AGGREGATE SHOULDER TYPE, B (TON)	POLYMERIZED BITUMINOUS MATERIALS PRIME COAT (GAL)	AGGREGATE PRIME COAT (TON)	REMARKS
I-57											
472 + 20.0 TO 612 + 24.5 502+98	37345				4706	3137	21785	830	5322	89	
612 + 24.5 TO 612 + 94.5		296			24	16	109		27	0	PAVING AT TURNAROUND
612 + 94.5 TO 614 + 54.5			427	249	54	36	249		61	1	BEGIN SHOULDER MILLING(STA. 612+24.5)
614 + 54.5 TO 615 + 24.5		296			24	16	109		27	0	END SHOULDER MILLING(STA. 615+24.5)
615 + 24.5 TO 688 + 95.0	19655				2476	1651	11465	437	2801	47	
TOTALS	57000	591	427	249	7283	4870	33717	1266	8237	137	

GUARDRAIL SCHEDULE

LOCATION STATION TO STATION	GUARDRAIL REMOVAL FOOT	TRAFFIC BARRIER TERMINAL, TYPE 6B EACH	STEEL PLATE BEAM GUARDRAIL TYPE A FOOT	TRAFFIC BARRIER TERMINAL, TYPE 1 (SPECIAL) TANGENT EACH	GUARDRAIL MARKER, TYPE B EACH	TERMINAL MARKERS DIRECT APPLIED EACH
613+53.9 TO 615+73	219					
613+53.9 TO 614+12		1				
614+12 TO 616+37			225		3	
616+37 TO 616+87				1		
616+87						1
TOTALS	219	1	225	1	3	1

PAVEMENT MARKING SCHEDULE

LOCATION STATION TO STATION	PREFORMED PLASTIC PAVEMENT MARKING, TYPE B - INLAID - LINE 4"			RAISED REFLECTIVE PAVEMENT MARKERS (EACH)
	SOLID EDGE LINE WHITE (FOOT)	C. L. SKIP DASH WHITE (FOOT)	SOLID EDGE LINE YELLOW (FOOT)	
	I-57 472 + 20 TO 688 + 95	21675	5419	
SUBTOTALS	21675	5419	21675	
TOTALS		48769		271

RIPRAP SCHEDULE

LOCATION STATION TO STATION	LENGTH OF STONE RIPRAP DITCH* FOOT	STONE RIPRAP DITCH TON
472+63 TO 474+13	160	89
491+36 TO 492+17	90	50
495+56 TO 496+56	101	56
501+31 TO 502+16	87	48
508+80 TO 510+48	172	96
522+02 TO 522+98	98	54
536+26 TO 536+92	68	38
600+08 TO 606+60	664	369
607+03 TO 607+36	33	18
618+63 TO 619+82	135	75
667+18 TO 668+39	126	70
TOTALS	1734	964

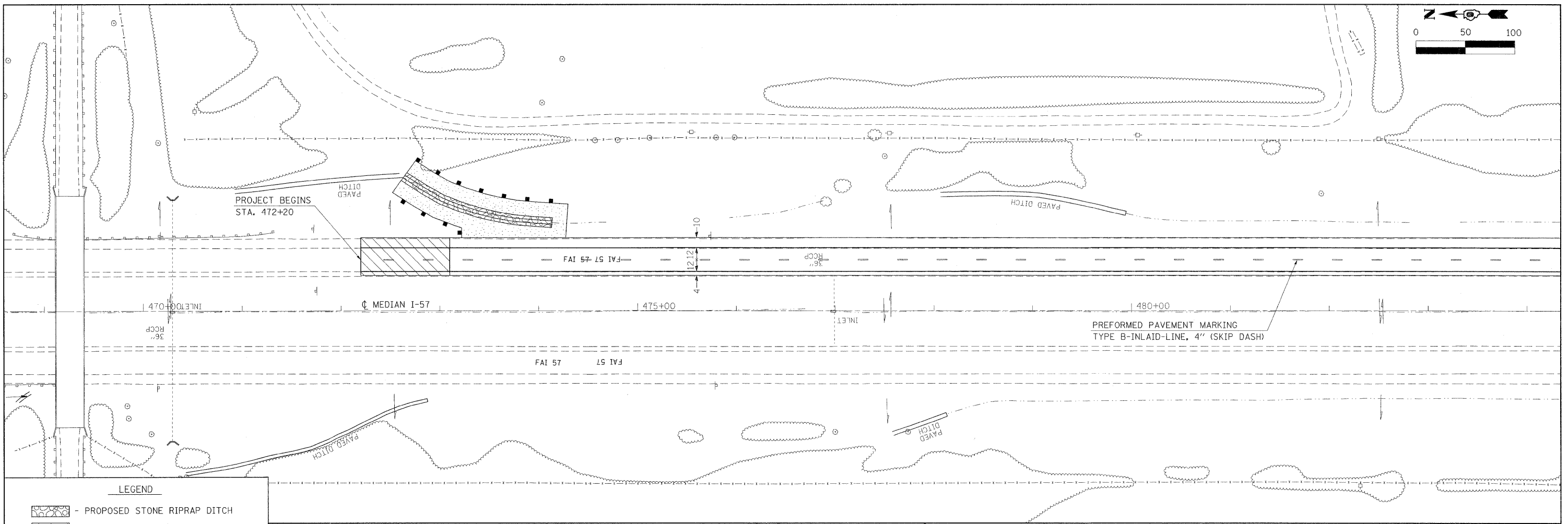
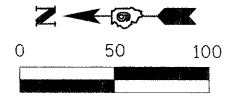
* NOT A PAY ITEM - FOR INFORMATION ONLY

SEEDING AND EROSION CONTROL SCHEDULE

LOCATION STA. TO STA.	SEEDING, CLASS 7 ACRE	SEEDING, CLASS 2 (MODIFIED) ACRE	NITROGEN FERTILIZER NUTRIENT POUND		PHOSPHORUS FERTILIZER NUTRIENT POUND	POTASSIUM FERTILIZER NUTRIENT POUND	AGRICULTURAL GROUND LIMESTONE TON	MULCH, METHOD 2 ACRE		EROSION CONTRIL BLANKET SQ YD	PERIMETER EROSION BARRIER FOOT
			FOR CLASS 7	FOR CLASS 2 (MODIFIED)				FOR CLASS 7	FOR CLASS 2 (MODIFIED)		
	472+52 TO 474+30	0.123	0.123	4.9	14.8	14.8	14.8	0.25	0.123	0.123	597
491+19 TO 492+30	0.079	0.079	3.2	9.5	9.5	9.5	0.16	0.079	0.079	381	148
495+38 TO 496+59	0.084	0.084	3.4	10.1	10.1	10.1	0.17	0.084	0.084	406	234
501+11 TO 502+20	0.074	0.074	3.0	8.9	8.9	8.9	0.15	0.074	0.074	357	205
508+62 TO 510+48	0.138	0.138	5.5	16.5	16.5	16.5	0.28	0.138	0.138	667	328
521+87 TO 522+98	0.081	0.081	3.2	9.7	9.7	9.7	0.16	0.081	0.081	392	225
536+08 TO 536+97	0.064	0.064	2.6	7.7	7.7	7.7	0.13	0.064	0.064	311	112
600+06 TO 606+74	0.469	0.469	18.8	56.3	56.3	56.3	0.94	0.469	0.469	2269	1350
606+86 TO 607+40	0.037	0.037	1.5	4.4	4.4	4.4	0.07	0.037	0.037	177	97
618+44 TO 619+89	0.102	0.102	4.1	12.2	12.2	12.2	0.20	0.102	0.102	492	285
667+00 TO 668+46	0.105	0.105	4.2	12.6	12.6	12.6	0.21	0.105	0.105	507	217
SUBTOTALS			54.2	162.6				1.355	1.355		
TOTALS	1.355	1.355	217		163	163	2.71	2.709		6557	3453

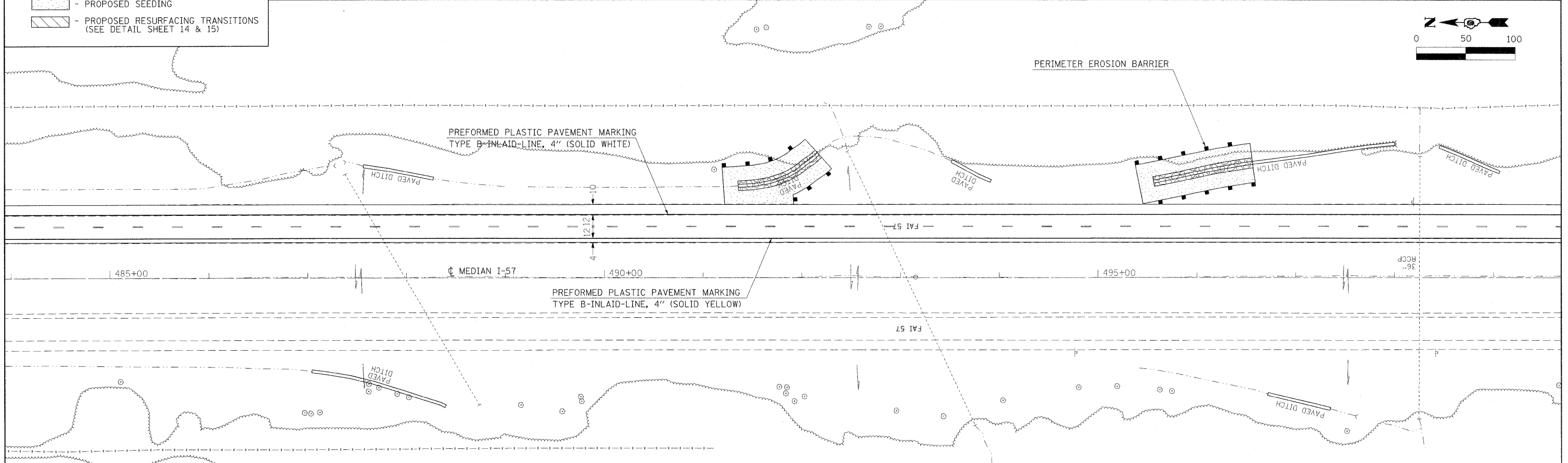
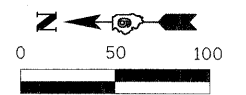
NITROGEN FERTILIZER NUTRIENT IS APPLIED AT 40 LB/ACRE FOR CLASS 7 AND 120 LB/ACRE FOR CLASS 2 (MODIFIED)

FILE NAME =	USER NAME = naasdp	DESIGNED -	REVISED -	STATE OF ILLINOIS DEPARTMENT OF TRANSPORTATION	SCHEDULES	F.A. RTE.	SECTION	COUNTY	TOTAL SHEETS	SHEET NO.	
0:\pw_work\p\dot\naasdp\d0123680\78118	sh-t-schedule.dgn	DRAWN -	REVISED -			FA157	77-(3,2)RS-3	PULASKI	17	5	
PLOT SCALE = 40,0000' / 1" IN.	CHECKED -	REVISED -				CONTRACT NO. 78118					
PLOT DATE = 3/17/2009	DATE -	REVISED -				ILLINOIS FED. AID PROJECT					

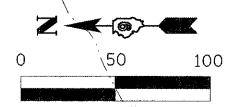
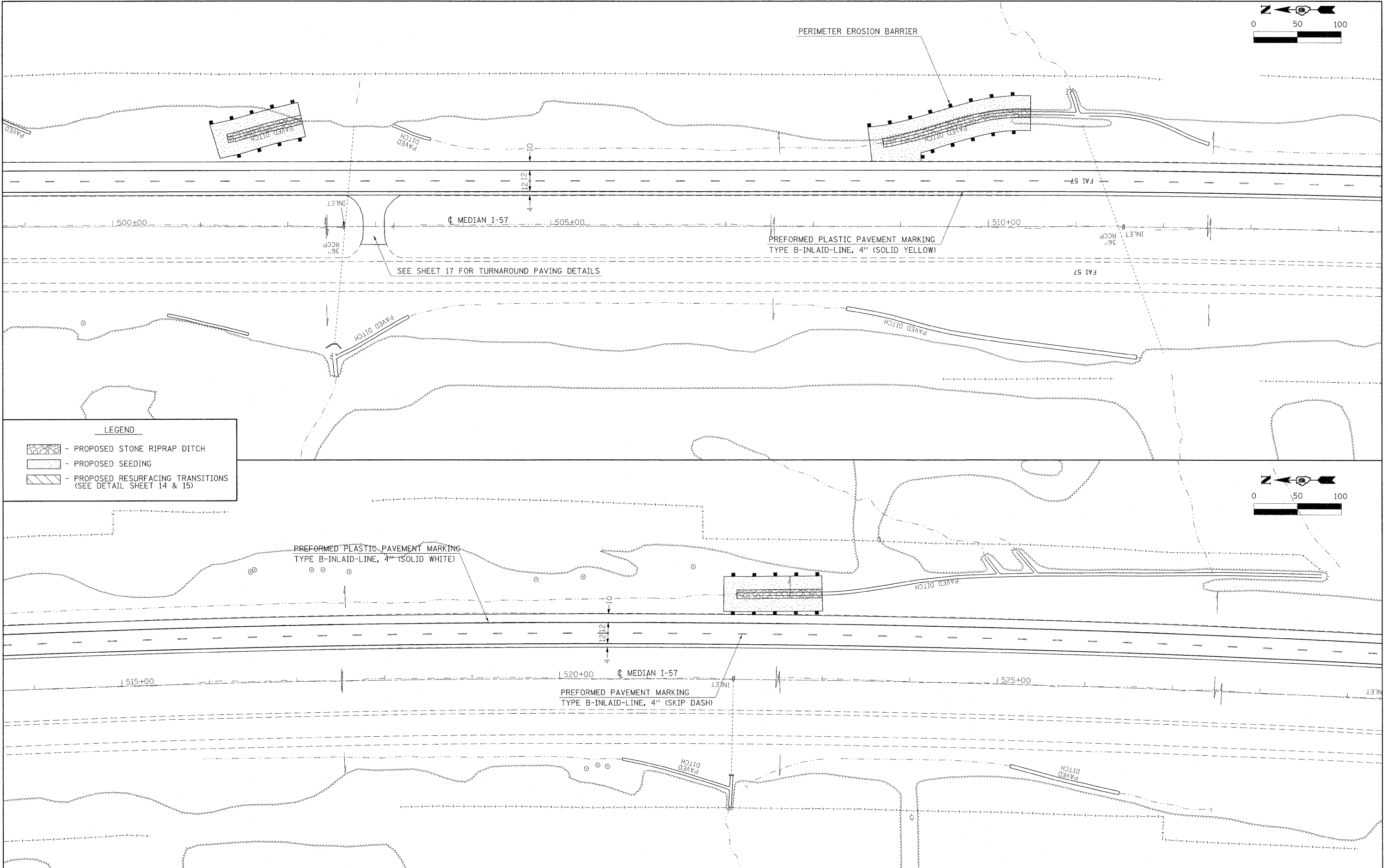
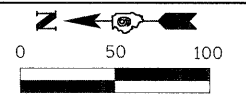


LEGEND

- PROPOSED STONE RIPRAP DITCH
- PROPOSED SEEDING
- PROPOSED RESURFACING TRANSITIONS (SEE DETAIL SHEET 14 & 15)



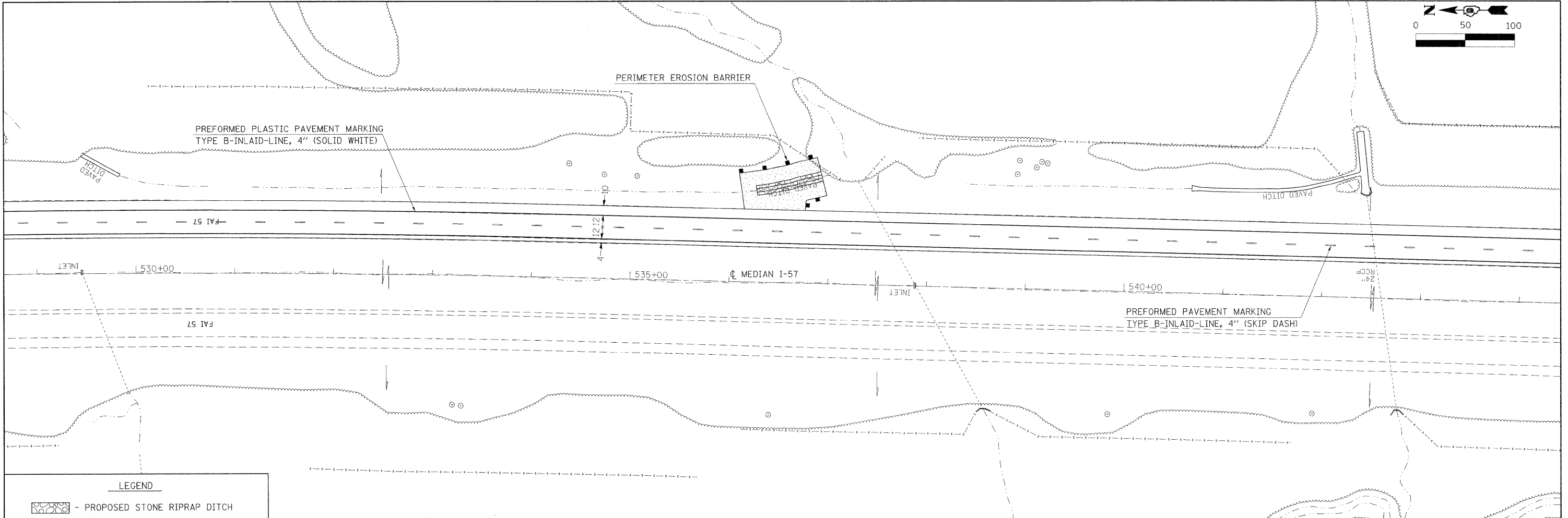
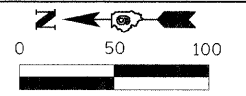
FILE NAME =	USER NAME = naasdp	DESIGNED -	REVISED -	STATE OF ILLINOIS DEPARTMENT OF TRANSPORTATION	PLAN SHEET	F.A.I. RTE.	SECTION	COUNTY	TOTAL SHEETS	SHEET NO.	
ct:\pwwork\pwwork\naasdp\d0123680\78118-shd-details.dgn		DRAWN -	REVISED -			FAI57	77-(3,2)RS-3	PULASKI	17	6	
PLOT SCALE = 50.0000' / IN.		CHECKED -	REVISED -			CONTRACT NO. 78118					
PLOT DATE = 3/17/2009		DATE -	REVISED -			FED. ROAD DIST. NO. ILLINOIS FED. AID PROJECT					



LEGEND

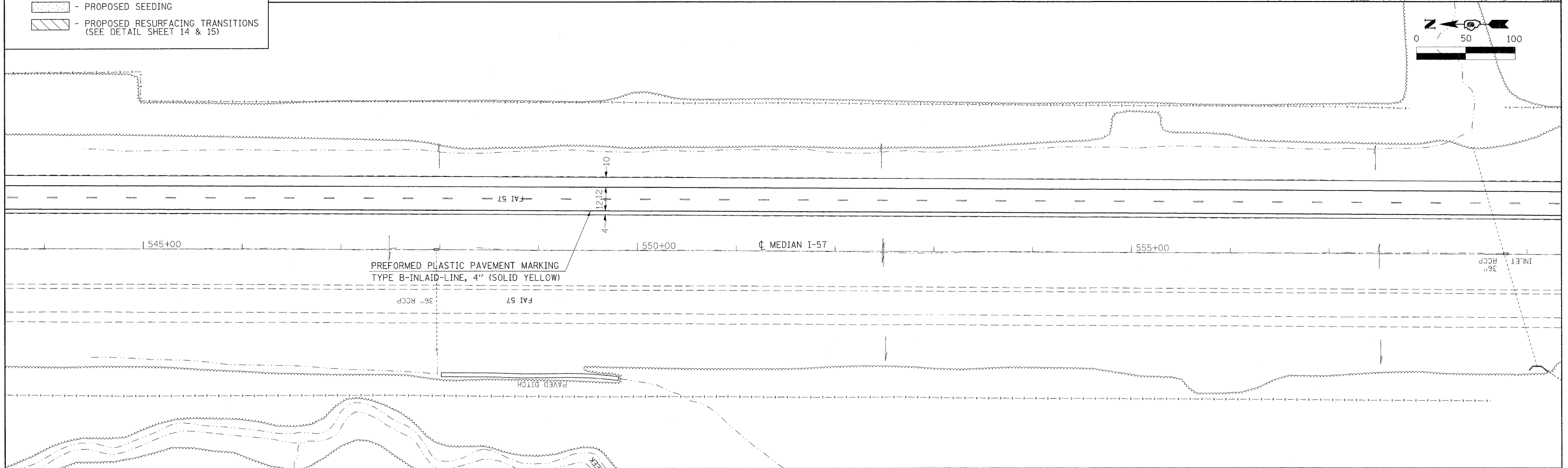
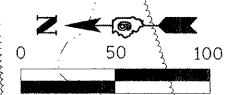
- PROPOSED STONE RIPRAP DITCH
- PROPOSED SEEDING
- PROPOSED RESURFACING TRANSITIONS (SEE DETAIL SHEET 14 & 15)

FILE NAME = c:\pwwork\pwwork\NAASDP\d0123680\78118	USER NAME = noasdp sht-details.dgn	DESIGNED - DRAWN -	REVISED - REVISED -	STATE OF ILLINOIS DEPARTMENT OF TRANSPORTATION	PLAN SHEET	F.A.I. RTE. FAI57	SECTION 77-(3,2)RS-3	COUNTY PULASKI	TOTAL SHEETS 17	SHEET NO. 7
PLOT SCALE = 50,0000' / IN.		CHECKED -	REVISED -	SCALE: SHEET NO. OF SHEETS STA. 500+00 TO STA. 530+00		CONTRACT NO. 78118				
PLOT DATE = 3/30/2009		DATE -	REVISED -			FED. ROAD DIST. NO. ILLINOIS FED. AID PROJECT				



LEGEND

- PROPOSED STONE RIPRAP DITCH
- PROPOSED SEEDING
- PROPOSED RESURFACING TRANSITIONS (SEE DETAIL SHEET 14 & 15)



FILE NAME =
 c:\pwwork\pwwork\naasdp\40123680\78118

USER NAME = naasdp
 sht-details.dgn
 PLOT SCALE = 50.0000' / IN.
 PLOT DATE = 3/17/2009

DESIGNED -
 DRAWN -
 CHECKED -
 DATE -

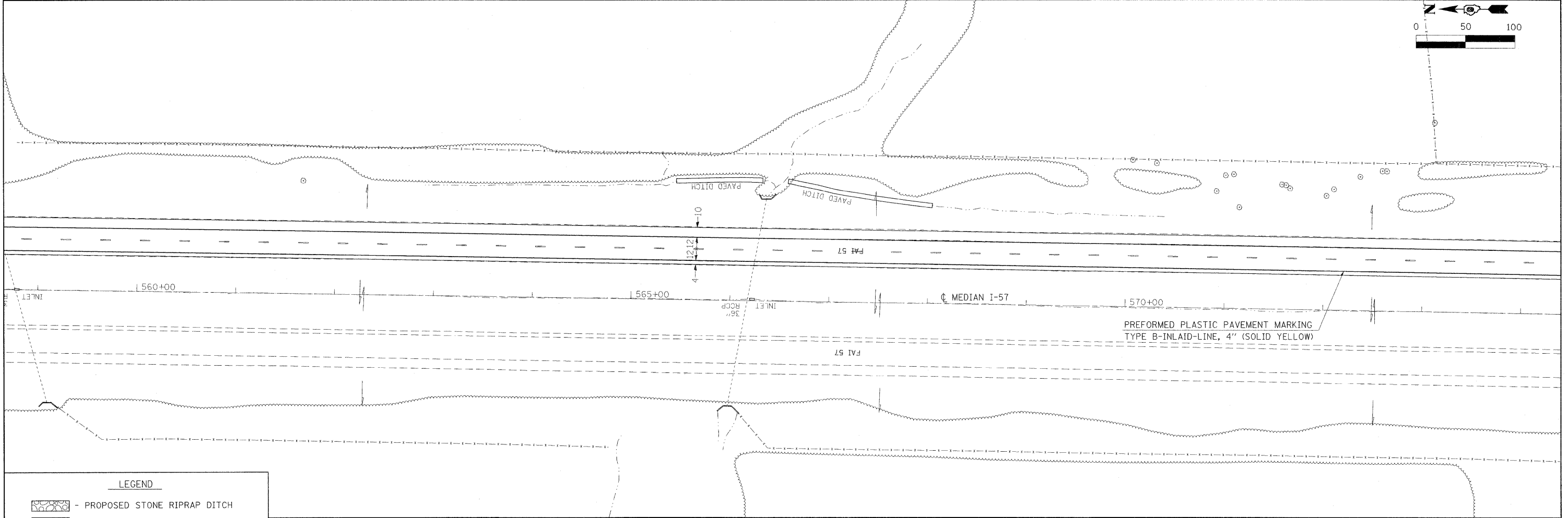
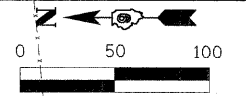
REVISED -
 REVISED -
 REVISED -
 REVISED -

**STATE OF ILLINOIS
 DEPARTMENT OF TRANSPORTATION**

PLAN SHEET

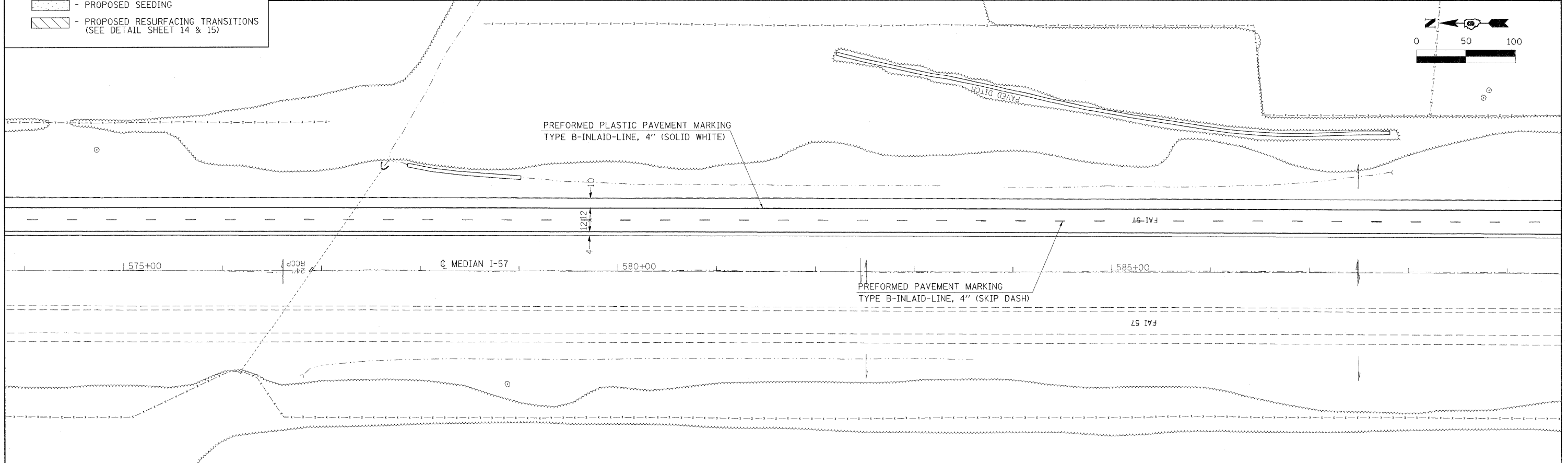
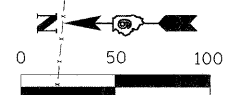
SCALE: SHEET NO. OF SHEETS STA. 530+00 TO STA. 560+00

F.A.I. RTE. FA157	SECTION 77-(3,2)RS-3	COUNTY PULASKI	TOTAL SHEETS 17	SHEET NO. 8
FED. ROAD DIST. NO. ILLINOIS FED. AID PROJECT			CONTRACT NO. 78118	

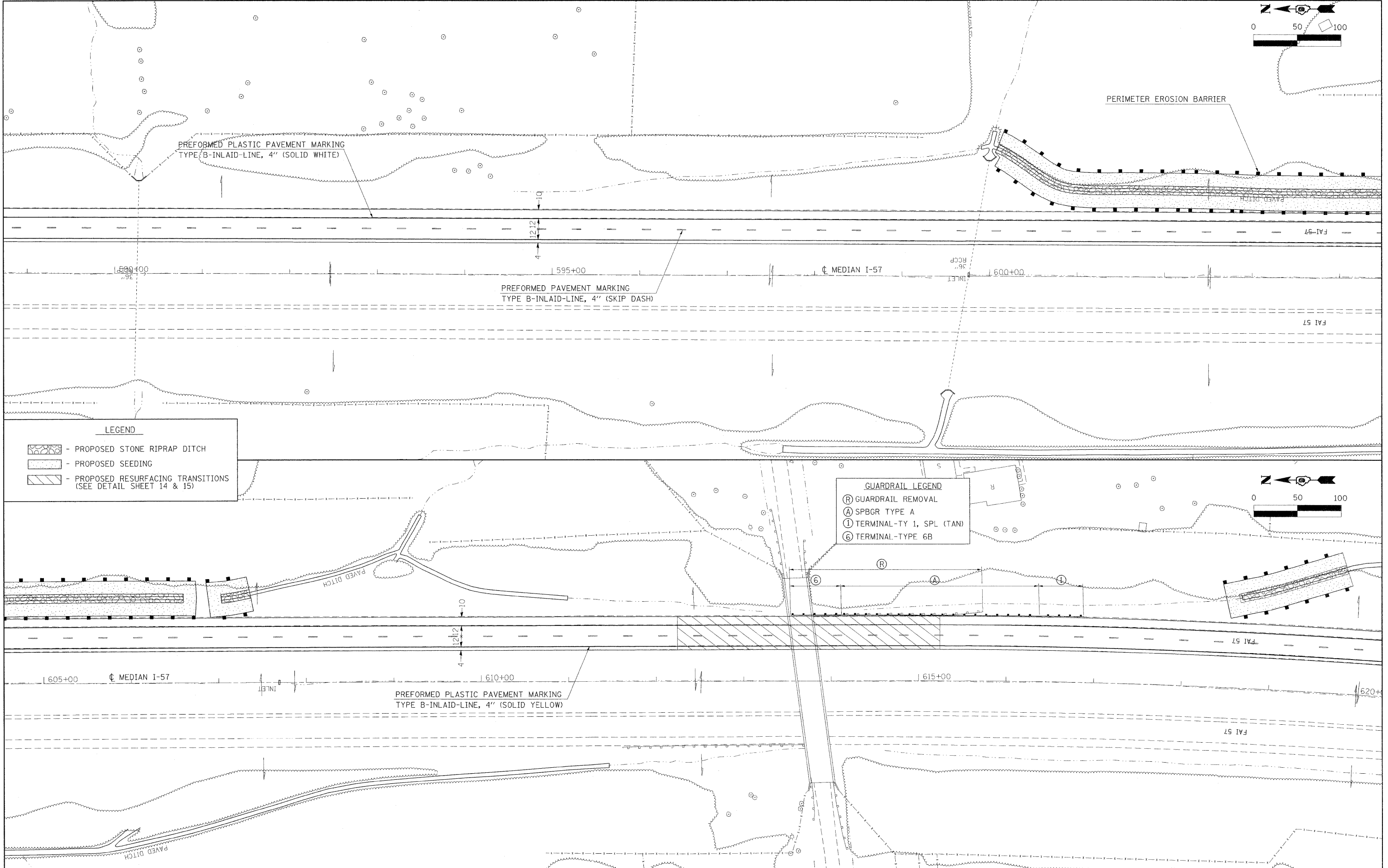
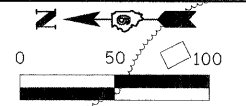


LEGEND

- PROPOSED STONE RIPRAP DITCH
- PROPOSED SEEDING
- PROPOSED RESURFACING TRANSITIONS (SEE DETAIL SHEET 14 & 15)



FILE NAME =	USER NAME = naasdp	DESIGNED -	REVISED -	STATE OF ILLINOIS DEPARTMENT OF TRANSPORTATION	PLAN SHEET			F.A.I RTE.	SECTION	COUNTY	TOTAL SHEETS	SHEET NO.	
c:\pwwork\pwwork\naasdp\d0123688\78118	sh1-detail1.s.dgn	DRAWN -	REVISED -		SCALE:	SHEET NO.	OF	SHEETS	FAI57	77-(3,2)RS-3	PULASKI	17	9
	PLOT SCALE = 50,0000' / IN.	CHECKED -	REVISED -		STA. 560+00	TO STA. 590+00		FED. ROAD DIST. NO.		ILLINOIS	FED. AID PROJECT		
	PLOT DATE = 3/17/2009	DATE -	REVISED -					CONTRACT NO. 78118					

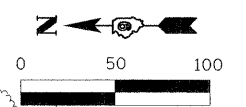


LEGEND

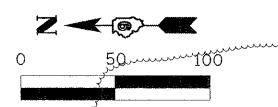
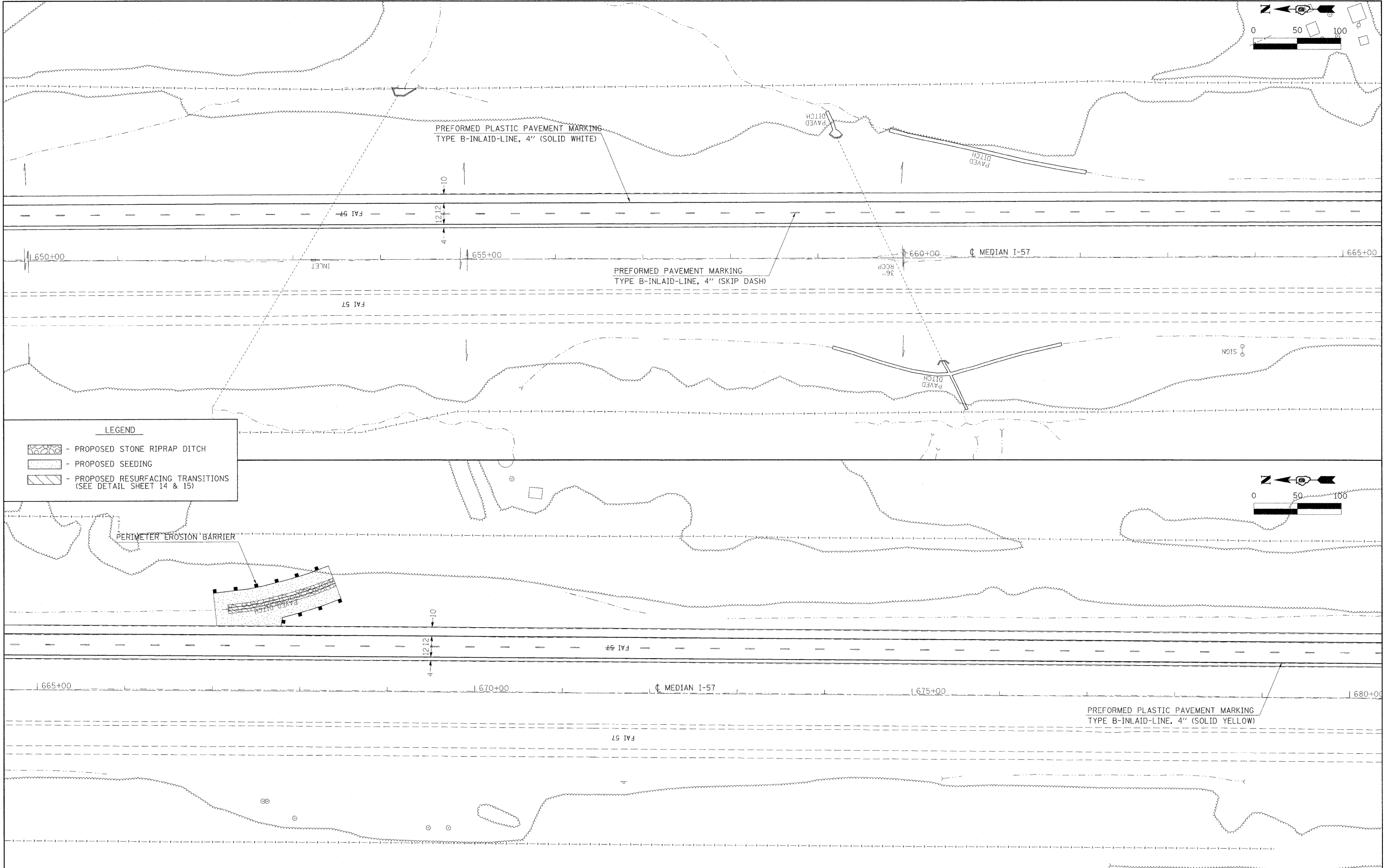
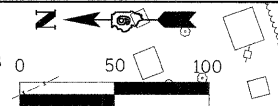
- PROPOSED STONE RIPRAP DITCH
- PROPOSED SEEDING
- PROPOSED RESURFACING TRANSITIONS (SEE DETAIL SHEET 14 & 15)

GUARDRAIL LEGEND

- GUARDRAIL REMOVAL
- SPBGR TYPE A
- TERMINAL-TY 1, SPL (TAN)
- TERMINAL-TYPE 6B



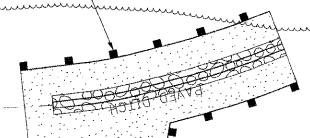
FILE NAME =	USER NAME = naesdp	DESIGNED -	REVISED -	STATE OF ILLINOIS DEPARTMENT OF TRANSPORTATION	PLAN SHEET	F.A.I RTE.	SECTION	COUNTY	TOTAL SHEETS	SHEET NO.	
ci:\pw_work\pwr\dot\naesdp\d0123680\78118	shd_details.dgn	DRAWN -	REVISED -			FAI57	77-(3,2)RS-3	PULASKI	17	10	
	PLOT SCALE = 50.0000' / IN.	CHECKED -	REVISED -			CONTRACT NO. 78118					
	PLOT DATE = 3/17/2009	DATE -	REVISED -			FED. ROAD DIST. NO. ILLINOIS FED. AID PROJECT					



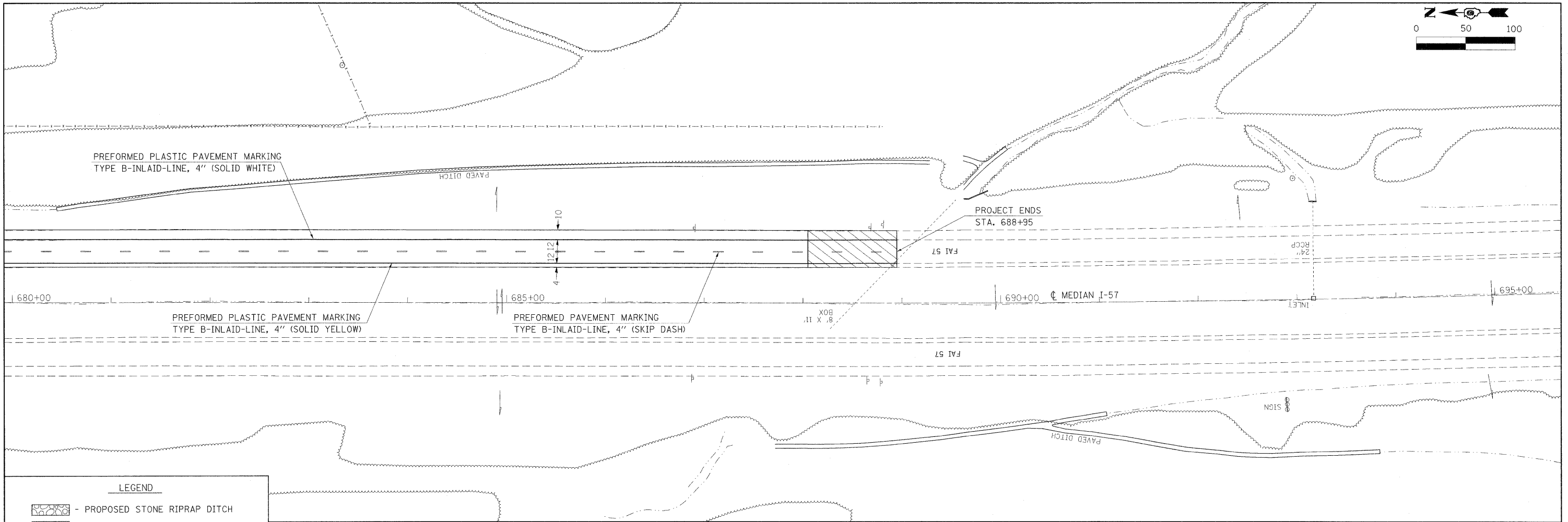
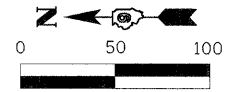
LEGEND

- PROPOSED STONE RIPRAP DITCH
- PROPOSED SEEDING
- PROPOSED RESURFACING TRANSITIONS (SEE DETAIL SHEET 14 & 15)

PERIMETER EROSION BARRIER



FILE NAME =	USER NAME = nsaasdp	DESIGNED -	REVISED -	STATE OF ILLINOIS DEPARTMENT OF TRANSPORTATION	PLAN SHEET	F.A.I RTE.	SECTION	COUNTY	TOTAL SHEETS	SHEET NO.	
ct:\pw_work\pxidot\neaasdp\d0123680\78118	hht-details.dgn	DRAWN -	REVISED -			FAI57	77-(3,2)RS-3	PULASKI	17	12	
	PLOT SCALE = 50,0000' / IN.	CHECKED -	REVISED -			CONTRACT NO. 78118					
	PLOT DATE = 3/17/2009	DATE -	REVISED -			SCALE:		SHEET NO. OF SHEETS		STA. 650+00 TO STA. 680+00	
						FED. ROAD DIST. NO. ILLINOIS FED. AID PROJECT					



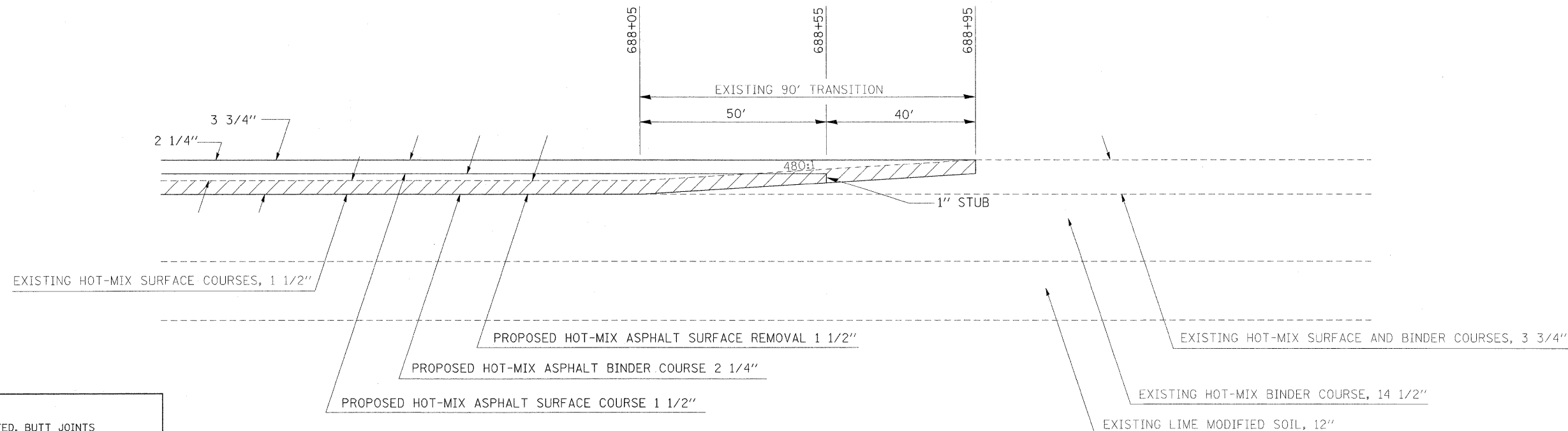
LEGEND

- PROPOSED STONE RIPRAP DITCH
- PROPOSED SEEDING
- PROPOSED RESURFACING TRANSITIONS (SEE DETAIL SHEET 14 & 15)

FILE NAME =	USER NAME = neasdp	DESIGNED -	REVISED -	STATE OF ILLINOIS DEPARTMENT OF TRANSPORTATION	PLAN SHEET	F.A.I RTE. FAI57	SECTION 77-(3,2)RS-3	COUNTY PULASKI	TOTAL SHEETS 17	SHEET NO. 13		
ct:\pw_work\pwidot\neasdp\d0123688\78118	shd\detail.dgn	DRAWN -	REVISED -			SCALE: SHEET NO. OF SHEETS STA. 680+00 TO STA. 690+00		CONTRACT NO. 78118				
	PLOT SCALE = 50.0000' / IN.	CHECKED -	REVISED -					FED. ROAD DIST. NO. ILLINOIS FED. AID PROJECT				
	PLOT DATE = 3/17/2007	DATE -	REVISED -									

MAINLINE RESURFACING TRANSITION

(Sta. 687+85 to 688+75)

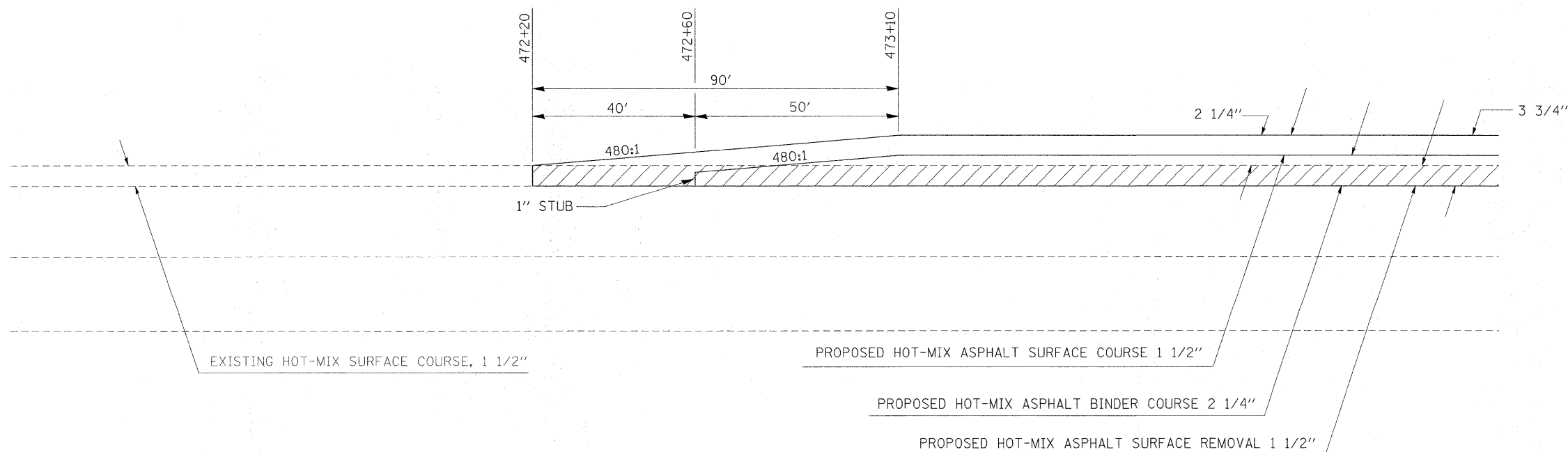


NOTES:

1. AT THE LOCATIONS INDICATED, BUTT JOINTS SHALL BE CONSTRUCTED IN THE ADJACENT EXISTING ASPHALT SHOULDERS. THIS WORK SHALL BE PAID FOR AS HMA SURFACE REMOVAL - BUTT JOINT.
2. RESURFACING TRANSITIONS SHALL BE CONSTRUCTED UTILIZING STRING LINE GRADE CONTROL. THIS WORK SHALL BE INCLUDED IN THE COST OF PAVING.
3. A 1 1/2 " SAWCUT SHALL BE MADE AT THE END OF EACH RESURFACING TRANSITION AS DIRECTED BY THE ENGINEER. THIS SAWCUT SHALL NOT BE PAID FOR SEPERATELY, BUT SHALL BE INCLUDED IN THE COST OF HMA SURFACE REMOVAL 1 1/2".

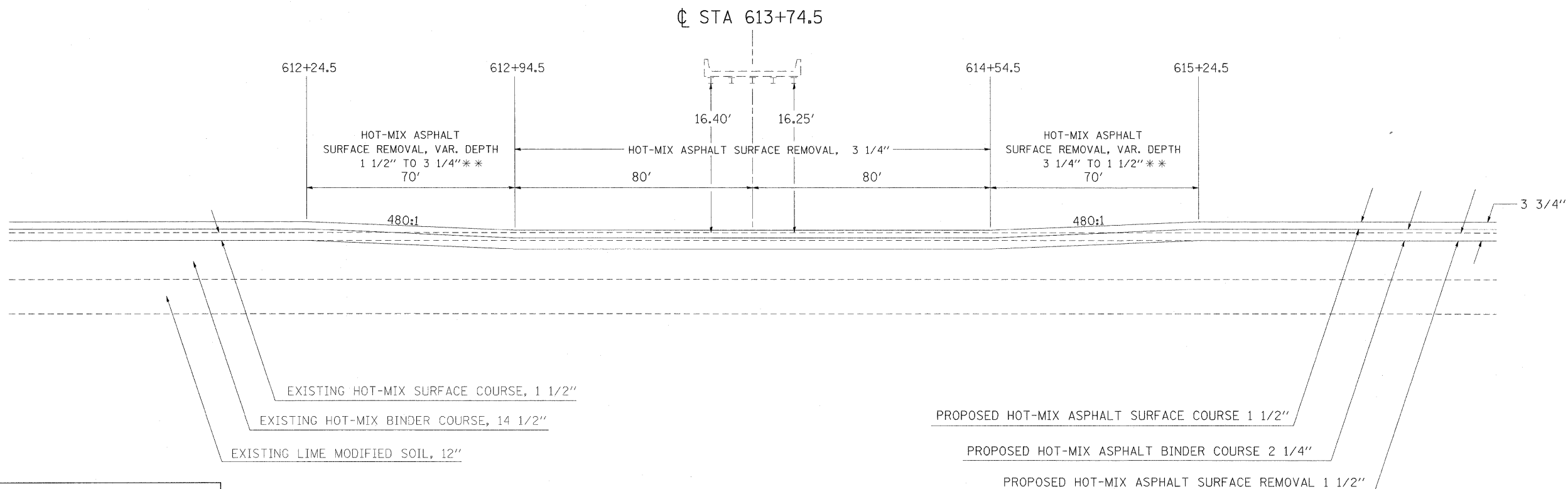
MAINLINE RESURFACING TRANSITION

(Sta. 472+20 to 473+10)



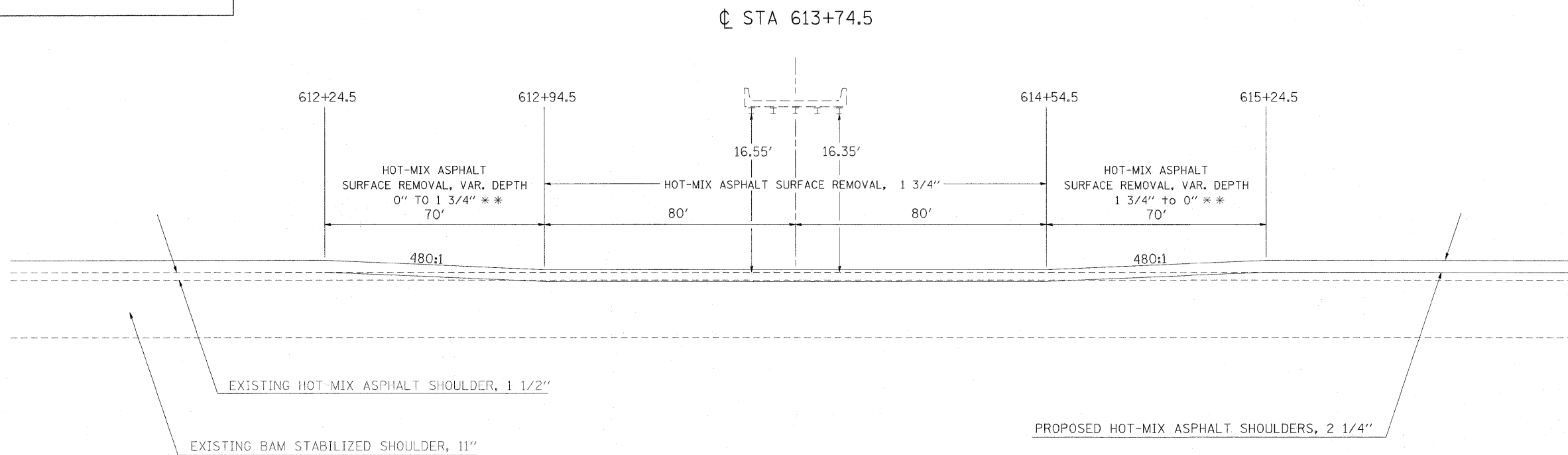
FILE NAME =	USER NAME = neesdp	DESIGNED -	REVISED -	STATE OF ILLINOIS DEPARTMENT OF TRANSPORTATION	DETAILS: RESURFACING TRANSITIONS				F.A.I RTE.	SECTION	COUNTY	TOTAL SHEETS	SHEET NO.
es:\pw_work\pww\DOT\NAASDP\0123680\78118	shst-details.dgn	DRAWN -	REVISED -						57	77-02,3RS	PULASKI	17	14
	PLOT SCALE = 2.0250 "/td> <td>CHECKED -</td> <td>REVISED -</td> <td colspan="4" style="text-align: center;">SCALE: SHEET NO. OF SHEETS STA. TO STA.</td> <td colspan="3" style="text-align: center;">CONTRACT NO. 78051</td>	CHECKED -	REVISED -		SCALE: SHEET NO. OF SHEETS STA. TO STA.				CONTRACT NO. 78051				
	PLOT DATE = 3/12/2009	DATE -	REVISED -		FED. ROAD DIST. NO. ILLINOIS FED. AID PROJECT								

MAINLINE PAVEMENT DETAIL AT OLMSTEAD ROAD OVERPASS (SN 077-0034)



NOTES:
 THE PROPOSED PAVEMENT SHALL BE CONSTRUCTED UTILIZING STRING LINE GRADE CONTROL WITH A MAXIMUM PIN SPACING OF 25 FEET. THIS WORK SHALL BE INCLUDED IN THE COST OF PAVING.
 A MINIMUM VERTICAL CLEARANCE OF 16' 0" TO BE ACHIEVED BY INCREASING THE MILLING DEPTH.
 ** SURFACE REMOVAL IN TRANSITION AREAS WILL BE PAID FOR AS HMA SURFACE REMOVAL (VARIABLE DEPTH)

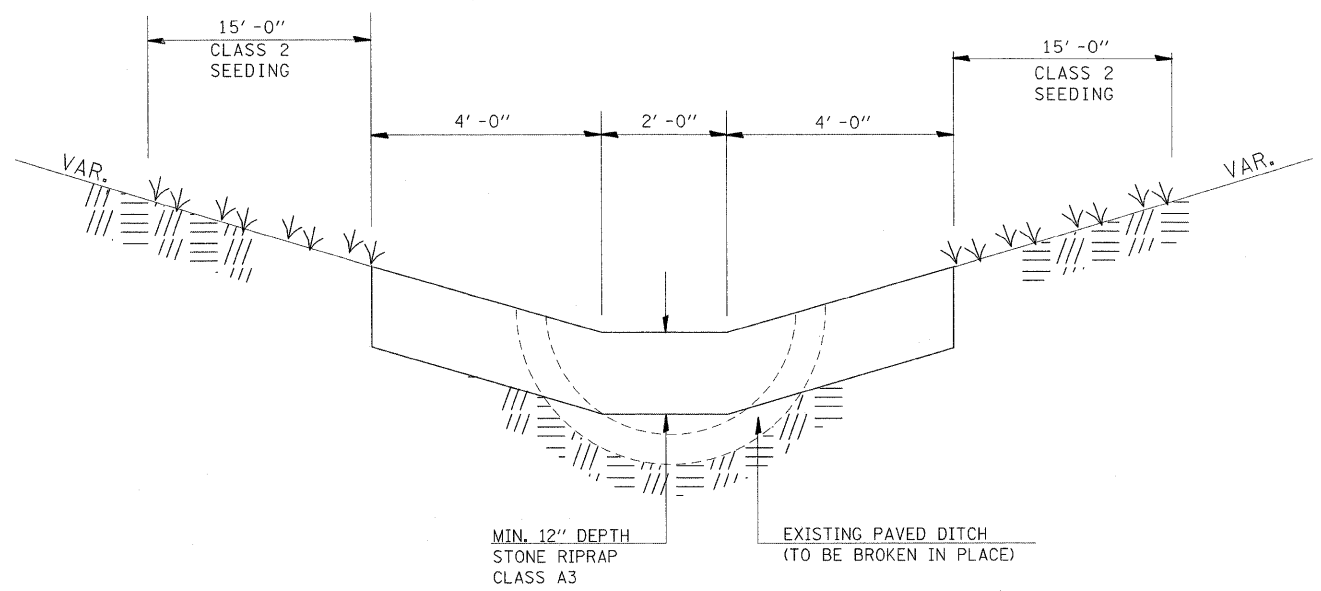
SHOULDER PAVEMENT DETAIL AT OLMSTEAD ROAD OVERPASS (SN 077-0034)



FILE NAME =	USER NAME = rnaedp	DESIGNED -	REVISED -	STATE OF ILLINOIS DEPARTMENT OF TRANSPORTATION	PAVEMENT DETAIL- OLMSTEAD ROAD OVERPASS	F.A.I. RTE.	SECTION	COUNTY	TOTAL SHEETS	SHEET NO.	
c:\pw_work\PWIDOT\NAASDP\d0123688\78118	shdt-details.dgn	DRAWN -	REVISED -			FA157	77-(3,2)RS-3	PULASKI	17	15	
	PLOT SCALE = 20,0000 ' / IN.	CHECKED -	REVISED -			CONTRACT NO. 78118					
	PLOT DATE = 3/30/2009	DATE -	REVISED -			SCALE:	SHEET NO.	OF	SHEETS	STA.	TO STA.

DETAIL STONE RIPRAP DITCH

(ON EXISTING PAVED DITCH)



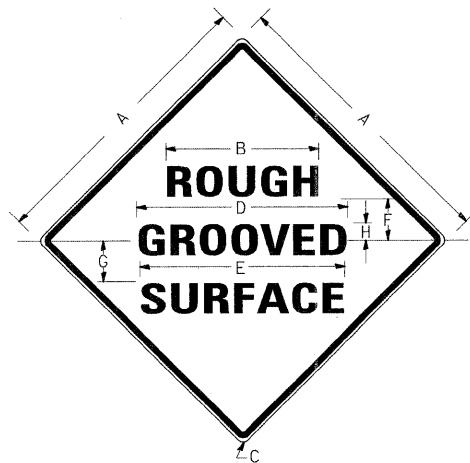
NOTES: THIS WORK SHALL BE PAID FOR AT THE CONTRACT UNIT PRICE PER TON, FOR **STONE RIPRAP DITCH**, WHICH PRICE SHALL INCLUDE ALL MATERIAL LABOR AND EQUIPMENT TO COMPLETE THE WORK IN PLACE AS SHOWN AND DETAILED IN THE SPECIAL PROVISIONS. THE FINISHED SIDE SLOPES OF THE STONE RIPRAP DITCH SHALL MATCH THE EXISTING GRADE.

TO BE USED:
SEE RIPRAP SCHEDULE

FILE NAME =	USER NAME = naasdp	DESIGNED -	REVISED -	STATE OF ILLINOIS DEPARTMENT OF TRANSPORTATION	DETAILS: STONE RIPRAP DITCH	F.A.I RTE.	SECTION	COUNTY	TOTAL SHEETS	SHEET NO.	
es:\pw_work\PW\DOT\NAASDP\123680\78118	sht-details.dgn	DRAWN -	REVISED -			57	77-(2,3)RS	PULASKI	17	16	
	PLOT SCALE = 2.0250' / IN.	CHECKED -	REVISED -			CONTRACT NO. 78051					
	PLOT DATE = 3/12/2009	DATE -	REVISED -			SCALE:	SHEET NO.	OF	SHEETS	STA.	TO STA.

ILLINOIS STANDARD

W8-1106



COLORS:

LEGEND AND BORDER- BLACK NON-REFLECTORIZED
BACKGROUND- ORANGE REFLECTORIZED

SIGN SIZE	DIMENSIONS							
	A	B	C	D	E	F	G	H
48X48	48.0	24.1	3.0	34.0	33.0	6.0	13.0	3.5

SIGN SIZE	SERIES LINES			MARGIN	BORDER	BLANK STD.
	1	2	3			
48X48	7C	7C	7C	0.8	1.2	B4-48D

ALL DIMENSIONS IN INCHES

NOTES:

PRIOR TO ALLOWING TRAFFIC ON ANY PORTION OF THE ROADWAY THAT HAS BEEN COLDMILLED, THE CONTRACTOR SHALL HAVE ERECTED "ROUGH GROOVED SURFACE" SIGNS THAT CONFORM TO THE ABOVE DETAILS. A MINIMUM OF ONE SIGN AT EACH END OF THE IMPROVEMENT WILL BE REQUIRED. THE CONTRACTOR SHALL MAINTAIN THE "ROUGH GROOVED SURFACE" SIGNS UNTIL THE COLDMILLED SURFACE IS COVERED WITH LEVELING BINDER OR SURFACE COURSE.

IF AT ANY TIME THE SIGNS ARE IN PLACE BUT NOT APPLICABLE, THEY SHALL BE TURNED FROM THE VIEW OF MOTORISTS OR COVERED AS DIRECTED BY THE ENGINEER.

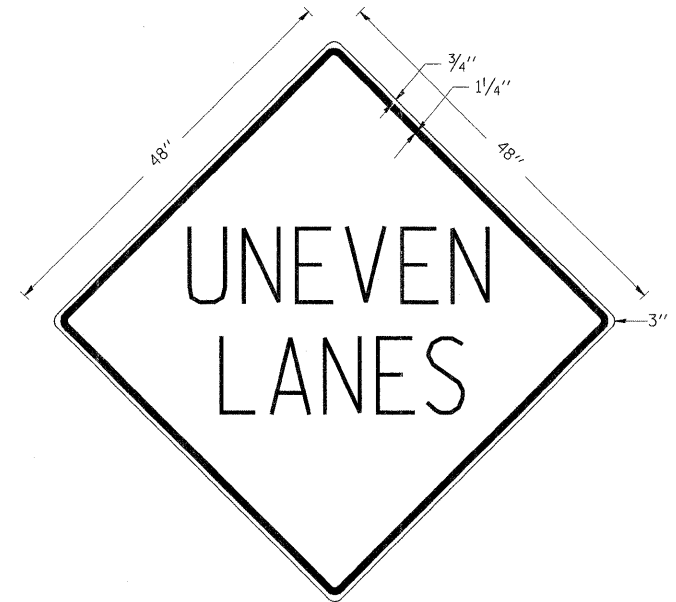
THE COST OF FURNISHING, ERECTING, MAINTAINING, AND REMOVING THE REQUIRED SIGNS SHALL BE INCLUDED IN THE CONTRACT.

STD. 9-39

REVISIONS	
REDRAWN	2-15-89
REVISED	4-6-93
REVISED	
REVISED	

UNEVEN LANES SIGN

W8-11 (48" x 48")



COLORS:

LEGEND AND BORDER - BLACK NON-REFLECTORIZED
BACKGROUND - ORANGE REFLECTORIZED

NOTE: PRIOR TO ALLOWING TRAFFIC ON ANY PORTION OF THE ROADWAY THAT HAS BEEN COLDMILLED OR BEFORE RESURFACING OPERATIONS BEGIN, THE CONTRACTOR SHALL HAVE ERECTED "UNEVEN PAVEMENT" SIGNS THAT CONFORM TO THE ABOVE DETAILS. A MINIMUM OF ONE SIGN AT EACH END OF THE IMPROVEMENT WILL BE REQUIRED. THE CONTRACTOR SHALL MAINTAIN THE "UNEVEN PAVEMENT" SIGNS UNTIL THE RESURFACING OPERATIONS ARE COMPLETED.

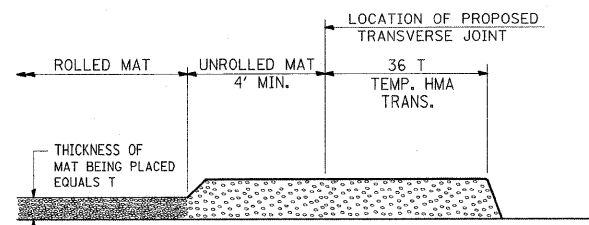
IF AT ANY TIME THE SIGNS ARE IN PLACE BUT NOT APPLICABLE, THEY SHALL BE TURNED FROM THE VIEW OF MOTORISTS OR COVERED AS DIRECTED BY THE ENGINEER.

THE COST OF FURNISHING, ERECTING, MAINTAINING, AND REMOVING THE REQUIRED SIGNS SHALL BE INCLUDED IN THE CONTRACT.

STD. 9-41

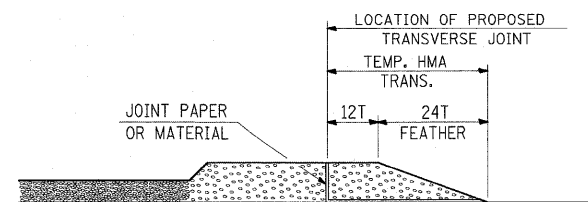
REVISIONS	
DRAWN	2-15-89
REVISED	4-6-93
REDESIGNED	7-23-04
REVISED	

TEMPORARY HOT-MIX ASPHALT TRANSITIONS



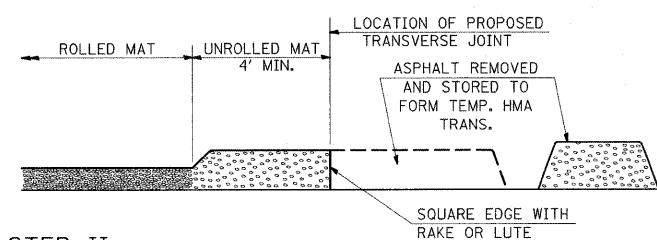
STEP I

1. PLACE HOT-MIX ASPHALT MAT, LENGTH 36 TIMES THE THICKNESS OF THE MAT BEING PLACED PAST THE PROPOSED TRANSVERSE JOINT LOCATION USING NORMAL OPERATING PROCEDURES.
2. EXTREME CARE SHOULD BE TAKEN TO MAINTAIN ENOUGH MATERIAL IN FRONT OF THE SCREED TO MAINTAIN REQUIRED PAVING DEPTH.



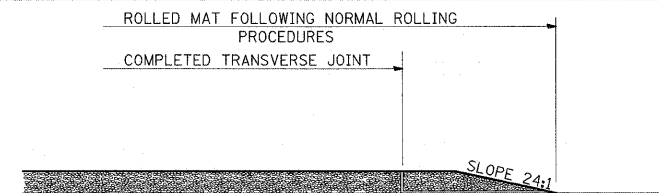
STEP III

1. JOINT PAPER OR OTHER PRESELECTED JOINT MATERIAL IS THEN PLACED IN THE CLEARED AREA AND THE EXCESS ASPHALT USED TO HAND FORM A TRANSITION TO THE DIMENSIONS SHOWN ABOVE.
2. NOTE THAT IN CONSTRUCTING THE TRANSITION, THE MAT DEPTH IS CONTINUED AS PART OF THE TRANSITION BEFORE FORMING THE FEATHER.



STEP II

1. MOVE THE PAVER OUT OF THE WAY AND REMOVE THE ASPHALT FROM THE AREA OF THE PROPOSED TEMPORARY HOT-MIX ASPHALT TRANSITION.
2. SQUARE UP THE END OF THE MAT WITH A RAKE OR LUTE.
3. NOTE THAT THE MAT WITHIN 4' OF THE END OF JOINT IS NOT TO BE ROLLED AT THIS TIME.



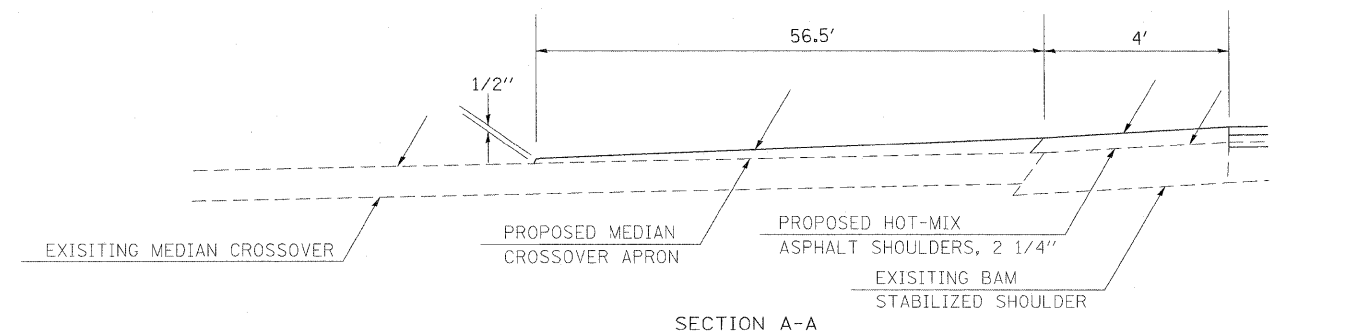
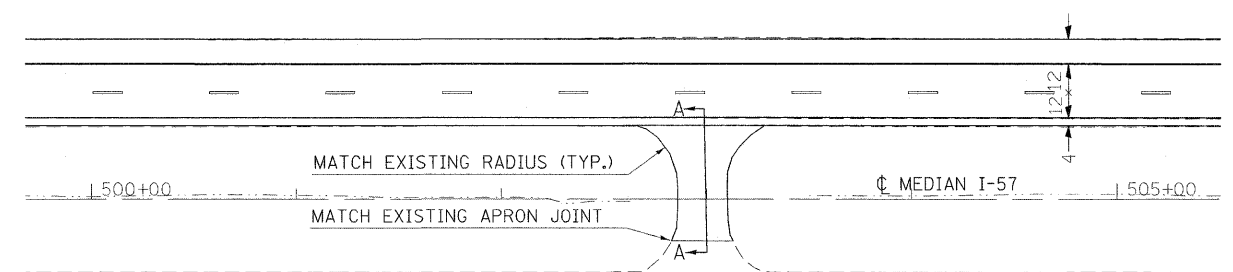
STEP IV

1. COMPLETE TEMPORARY TRANSITION BY ROLLING.
2. TO RESUME PAVING, AT THE JOINT, REMOVE TEMPORARY TRANSITION AND DISPOSE OF THE MATERIAL ACCORDING TO ART. 202.03 OF THE STD. SPECS. (COST INCLUDED IN THE CONTRACT).
3. CONSTRUCTING THE TEMPORARY TRANSITIONS WILL NOT BE PAID FOR SEPARATELY IN ACCORDANCE WITH ARTICLE 406.14 OF THE STANDARD SPECIFICATIONS.

STD. 9-26

REVISIONS	
REDRAWN	2-15-89
REVISED	8-16-94
REVISED	10-09-01
REVISED	

DETAIL OF MEDIAN CROSSOVER APRON



FILE NAME =
c:\pwork\NPWIDOT\NAASDP\d0123680\78118

USER NAME = neesdp
sht-details.dgn
PLOT SCALE = 2.8250 1/1 IN.
PLOT DATE = 3/12/2009

DESIGNED -
DRAWN -
CHECKED -
DATE -

REVISED -
REVISED -
REVISED -
REVISED -

**STATE OF ILLINOIS
DEPARTMENT OF TRANSPORTATION**

**DETAILS: ROUGH GROOVED SURFACE SIGN;
UNEVEN LANES SIGN; TEMP HMA TRANSITIONS**

SCALE: SHEET NO. OF SHEETS STA. TO STA.

F.A.I RTE.	SECTION	COUNTY	TOTAL SHEETS	SHEET NO.
57	77-(2,3)RS	PULASKI	17	17
CONTRACT NO. 78051				
FED. ROAD DIST. NO. ILLINOIS FED. AID PROJECT				