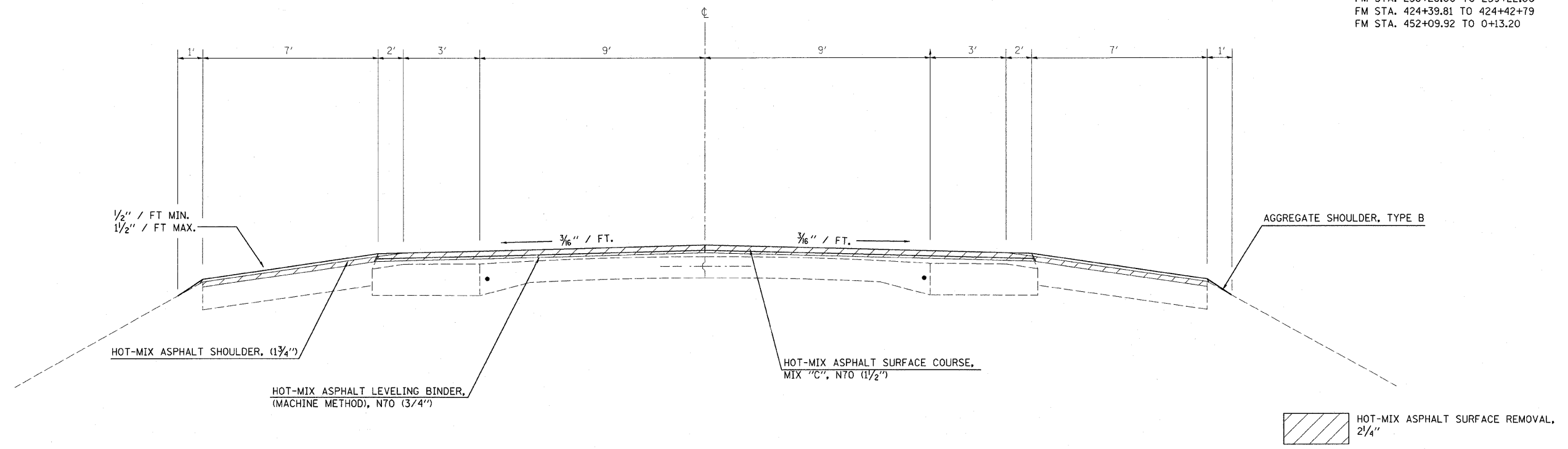


PROPOSED TYPICAL SECTION

FM STA. 0+13.20 TO STA. 2+90.00

PAVING OMISSION
 FM STA. 258+28.00 TO 259+22.00
 FM STA. 424+39.81 TO 424+42+79
 FM STA. 452+09.92 TO 0+13.20



FILE NAME =	USER NAME = teasleyck	DESIGNED -	REVISED -	STATE OF ILLINOIS DEPARTMENT OF TRANSPORTATION	PROPOSED TYPICAL SECTIONS				F.A.P. RTE.	SECTION	COUNTY	TOTAL SHEETS	SHEET NO.
c:\pwwork\pwwid\teasleyck\d0121195\d7	4381-sht-typical.dgn	DRAWN -	REVISED -		749	119S-2	MOULTRIE	26	6				
PLOT SCALE = 50.0000' / IN.	CHECKED -	REVISED -	REVISED -		CONTRACT NO. 74381								
PLOT DATE = 4/18/2009	DATE -	REVISED -	REVISED -		ILLINOIS FED. AID PROJECT								
				SCALE:	SHEET NO.	OF	SHEETS	STA.	TO STA.				