

STATE OF ILLINOIS
DEPARTMENT OF TRANSPORTATION
DIVISION OF HIGHWAYS

**PROPOSED
HIGHWAY PLANS**

FAP ROUTE 320 (IL 10)
SECTION 103RS-2, 104RS-3

RESURFACING (SMART)
LOGAN COUNTY

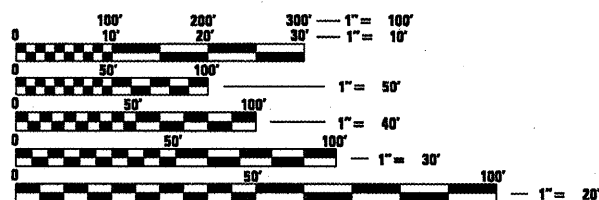
C-96-024-09

F.A.P. RTE.	SECTION	COUNTY	TOTAL SHEETS	SHEET NO.
320	103RS-2, 104RS-4	LOGAN	67	1
ILLINOIS			CONTRACT NO. 72C45	

FOR INDEX OF SHEETS, SEE SHEET NO. 2

HIGHWAY CLASSIFICATION
FAP 320 (IL 10)

ADT-11,585
PV-91.5%
SU-5.0%
MU-3.5%

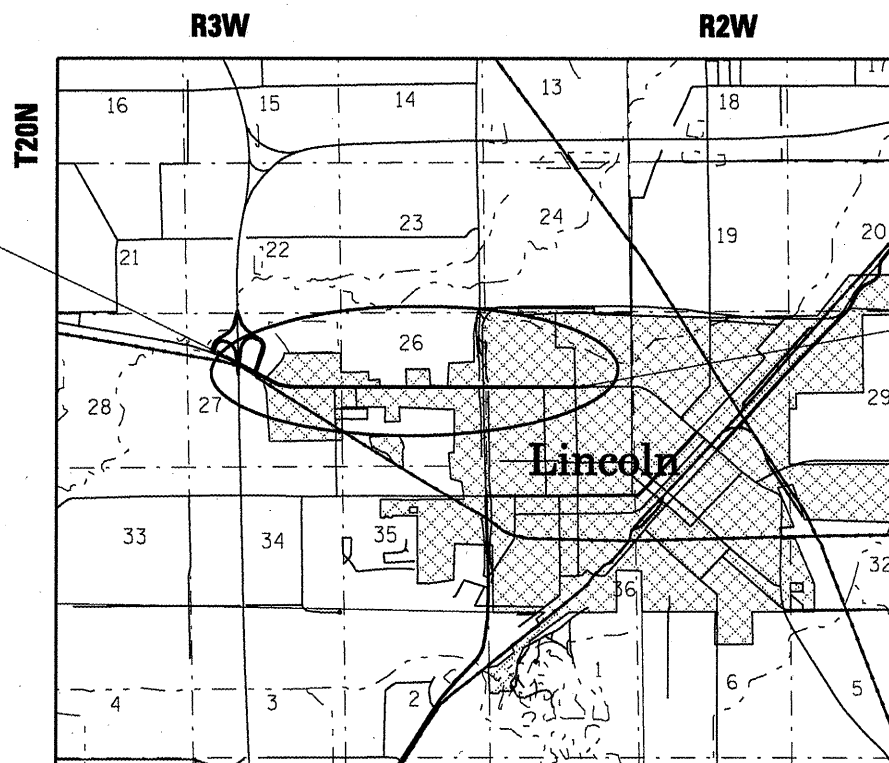


FULL SIZE PLANS HAVE BEEN PREPARED USING STANDARD ENGINEERING SCALES. REDUCED SIZED PLANS WILL NOT CONFORM TO STANDARD SCALES. IN MAKING MEASUREMENTS ON REDUCED PLANS, THE ABOVE SCALES MAY BE USED.

J.U.L.I.E.
JOINT UTILITY LOCATION INFORMATION FOR EXCAVATION
1-800-892-0123
OR 811

PROJECT ENGINEER John Negangard 782-9660
PROJECT MANAGER Victor Young 557-7897

CONTRACT NO. 72C45



STATE OF ILLINOIS
DEPARTMENT OF TRANSPORTATION
DIVISION OF HIGHWAYS

SUBMITTED April 10, 2009
Roger Pisker
DEPUTY DIRECTOR OF HIGHWAYS, REGION ENGINEER

May 1, 2009
Charles J. Orger
ENGINEER OF DESIGN AND ENVIRONMENT

May 1, 2009
Christine M. Reed
DIRECTOR OF HIGHWAYS, CHIEF ENGINEER

GROSS LENGTH = 14,407 FT. = 2.73 MILE
NET LENGTH = 13,387.52 FT. = 2.54 MILE

**PRINTED BY THE AUTHORITY
OF THE STATE OF ILLINOIS**