

STATE OF ILLINOIS
DEPARTMENT OF TRANSPORTATION
DIVISION OF HIGHWAYS

**PROPOSED
HIGHWAY PLANS**

F.A.P. RTE.	SECTION	COUNTY	TOTAL SHEETS	SHEET NO.
317	(3,4)RS-6, (5,6)RS-4	ADAMS	30	1
FED. ROAD DIST. NO.	ILLINOIS	CONTRACT NO.	72845	

D-96-561-03

FOR INDEX OF SHEETS, SEE SHEET NO. 2

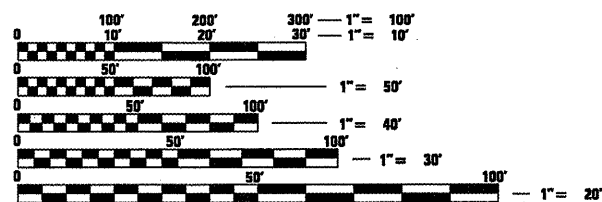
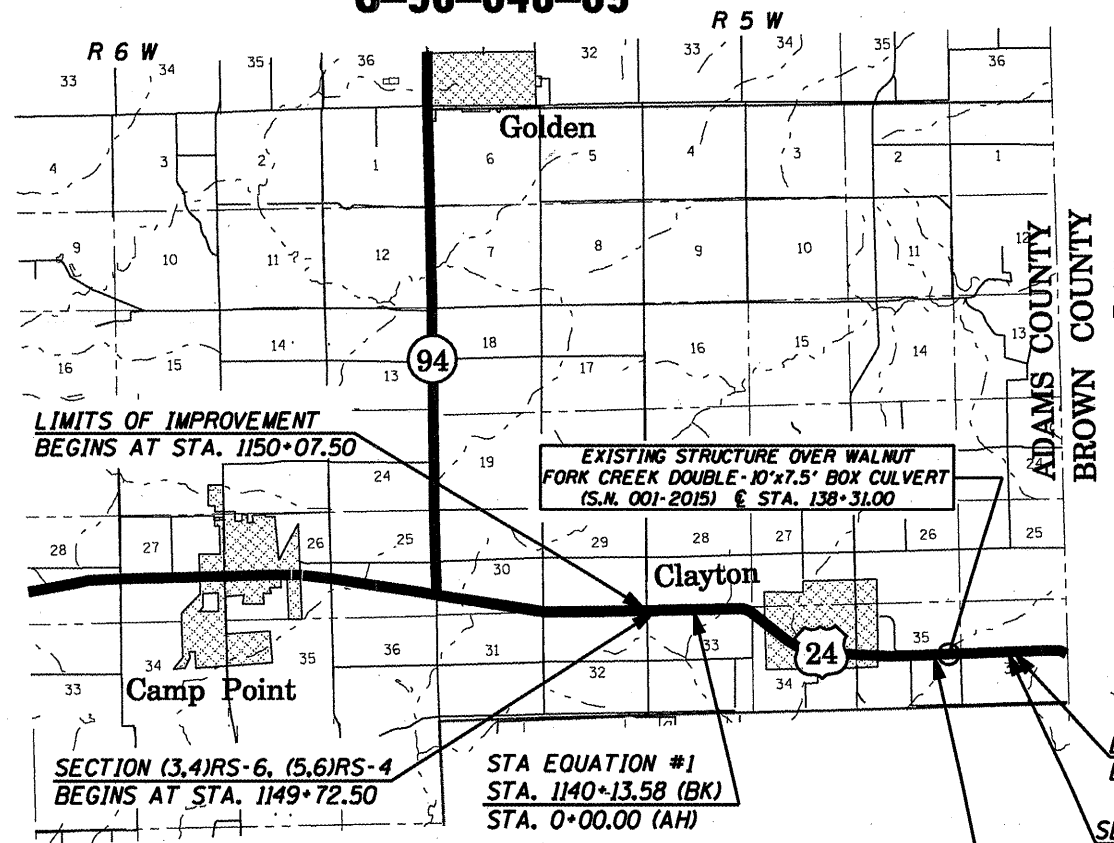
HIGHWAY CLASSIFICATION

F.A.P. ROUTE 317 (US 24)

CLASSIFICATION: OTHER PRINCIPAL ARTERIAL
ADT: 2,966 (2007) PV = 94.0%
ADT: 4,304 (2032) SU = 4.0%
DESIGN SPEED: 55 MPH MU = 2.0%
POSTED SPEED: 55 MPH

F.A.P. ROUTE 317 (US 24)
SECTION (3,4)RS-6, (5,6)RS-4

RESURFACING
ADAMS COUNTY
C-96-048-09



FULL SIZE PLANS HAVE BEEN PREPARED USING STANDARD ENGINEERING SCALES. REDUCED SIZED PLANS WILL NOT CONFORM TO STANDARD SCALES. IN MAKING MEASUREMENTS ON REDUCED PLANS, THE ABOVE SCALES MAY BE USED.

J.U.L.I.E.
JOINT UTILITY LOCATION INFORMATION FOR EXCAVATION
1-800-992-0123
OR 811

PROJECT ENGINEER: SAL MADONIA (217) 782-4761
PROJECT MANAGER: RENE CABRERA (217) 557-9062
TECHNICIAN: JONATHAN COX (217) 557-9062
CONTRACT NO. 72845

LOCATION MAP

GROSS LENGTH = 16,395.36 FT = 3.11 MI
NET LENGTH = 16,325.36 FT = 3.09 MI

STATE OF ILLINOIS
DEPARTMENT OF TRANSPORTATION
DIVISION OF HIGHWAYS

SUBMITTED April 10, 2009
Rogin L. Distell
DEPUTY DIRECTOR OF HIGHWAYS, REGION ENGINEER

May 1, 2009
Charles G. Ingersoll
ENGINEER OF DESIGN AND ENVIRONMENT

May 1, 2009
Christine M. Reed
DIRECTOR OF HIGHWAYS, CHIEF ENGINEER

**PRINTED BY THE AUTHORITY
OF THE STATE OF ILLINOIS**