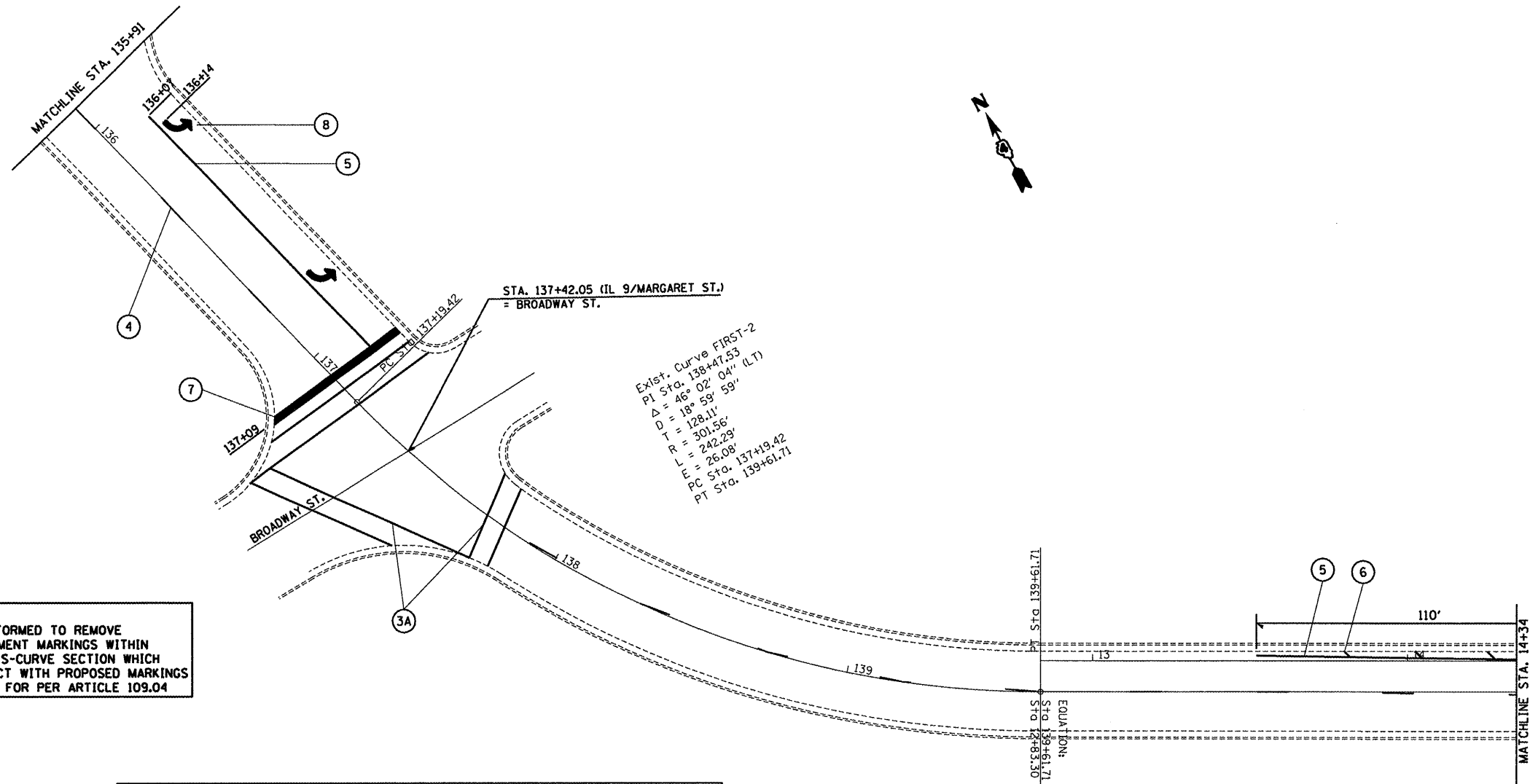


F.A.P. RTE.	SECTION	COUNTY	TOTAL SHEETS	SHEET NO.
693		TAZEWELL	54	30
STA. _____		TO STA. _____		
FED. ROAD DIST. NO. ILLINOIS FED. AID PROJECT				
*10,15RS-5, 9RS, 13RS-2, 15RS-4				
CONTRACT NO. 68892				



**NOTE**  
 ANY WORK PERFORMED TO REMOVE EXISTING PAVEMENT MARKINGS WITHIN THE CONCRETE S-CURVE SECTION WHICH ARE IN CONFLICT WITH PROPOSED MARKINGS SHALL BE PAID FOR PER ARTICLE 109.04

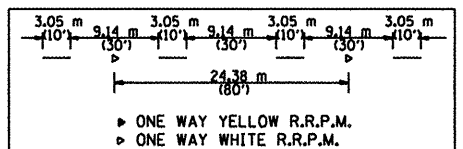
PAVEMENT MARKING LEGEND	
① 100 (4) SOLID (YELLOW)	
② 100 (4) SOLID (WHITE)	
③ 2-150 (6) CROSSWALK @ min. 2 m (6.5') c.c. (WHITE)	
③A 2-200 (8) CROSSWALK @ min. 2 m (6.5') c.c. (WHITE)	
④ 150 (6) SKIP DASH (WHITE)	
⑤ 200 (8) SOLID (WHITE)	
⑥ 300 (12) DIAGONAL (WHITE)	
⑦ 600 (24) STOP BAR (WHITE)	
⑧ LETTERS AND ARROWS	
⑨ 100 (4) SKIP DASH (YELLOW)	
⑩ 300 (12) DIAGONAL (YELLOW)	
⑪ 100 (4) DOUBLE (YELLOW)	
⑫ 400 (16) SOLID (WHITE)	

RAISED REFLECTIVE PAVEMENT MARKERS (RRPM)	
①	ONE-WAY CRYSTAL MARKER AT 24.38 m (80') CENTERS
②	ONE-WAY CRYSTAL MARKER AT 12.19 m (40') CENTERS
③	ONE-WAY CRYSTAL MARKER AT 6.10 m (20') CENTERS
④	ONE-WAY AMBER MARKER AT 12.19 m (40') CENTERS
⑤	TWO-WAY AMBER MARKER AT 12.19 m (40') CENTERS
	ONE-WAY CRYSTAL MARKER
	ONE-WAY AMBER MARKER

DELINEATORS	
▬	DELINEATOR WITH TWO AMBER REFLECTORS
▬▬▬	DELINEATOR WITH THREE AMBER REFLECTORS

All dimensions are in millimeters (inches) unless otherwise shown.



RESURFACING LEGEND	
---	RESURFACING LIMITS

REVISIONS	
NAME	DATE

ILLINOIS DEPARTMENT OF TRANSPORTATION  
**PAVEMENT MARKING  
 DETAILS &  
 RESURFACING LIMITS**  
 MARGARET ST. STA. 135+91 TO STA. 14+34  
 DRAWN BY \_\_\_\_\_  
 CHECKED BY \_\_\_\_\_  
 DATE \_\_\_\_\_

\$\$\$DATE\$\$\$  
 \*DON-ONLY\*