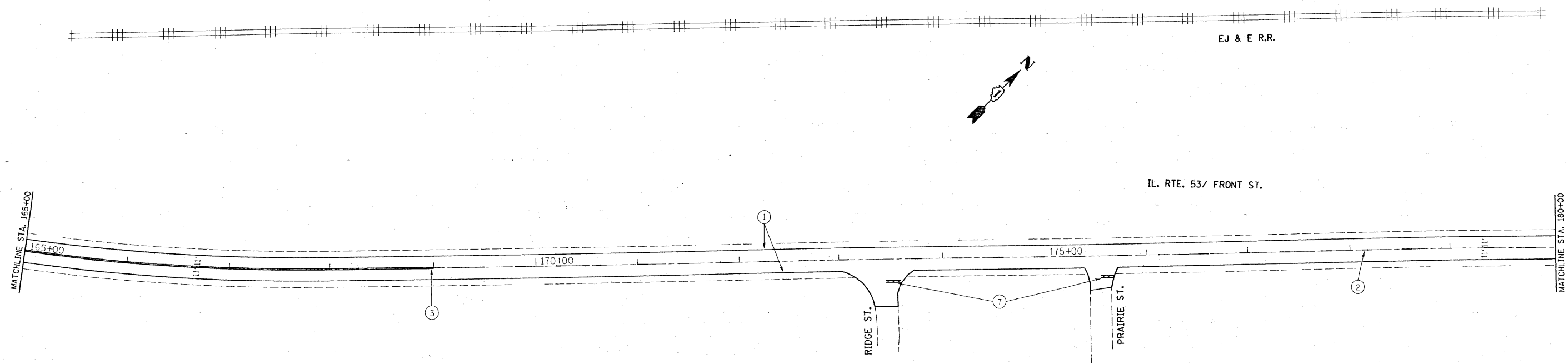


BRAIDWOOD NUCLEAR PLANT

STRIPING LEGEND

- ① 4" EDGE LINE - WHITE
- ② 4" SKIP DASH CENTERLINE - YELLOW
- ③ 4" SOLID CENTERLINE - YELLOW
- ④ 4" DOUBLE - YELLOW
- ⑤ 6" TURN LANE - WHITE
- ⑥ LETTERS & SYMBOLS - WHITE
- ⑦ 24" STOP BAR - WHITE
- ⑧ 8" ISLAND OUTLINE - WHITE
- ⑨ 12" DIAGONALS - YELLOW



FILE NAME = c:\pwwork\pwwid\DOT\M05SSE\d0110419\sh_r.dgn	USER NAME = mosse	DESIGNED -	REVISED -	STATE OF ILLINOIS DEPARTMENT OF TRANSPORTATION	IL. RTE. 53 (FIRST ST. TO WILL COUNTY LINE) ROADWAY PLAN			F.A. RTE. 846	SECTION 5RS-2	COUNTY WILL	TOTAL SHEETS 31	SHEET NO. 10
	PLOT SCALE = 50=0.0000 ' / IN.	CHECKED -	REVISED -					CONTRACT NO. 62648				
	PLOT DATE = 3/26/2009	DATE -	REVISED -					SCALE: 1"= 50' SHEET NO. OF SHEETS STA. 150+00.00 TO STA. 180+00.00				
								FED. ROAD DIST. NO. 1 ILLINOIS FED. AID PROJECT				