

STATE OF ILLINOIS
DEPARTMENT OF TRANSPORTATION
DIVISION OF HIGHWAYS

**PROPOSED
HIGHWAY PLANS**

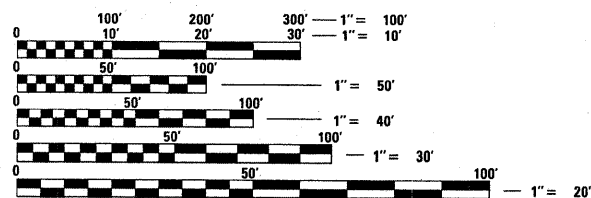
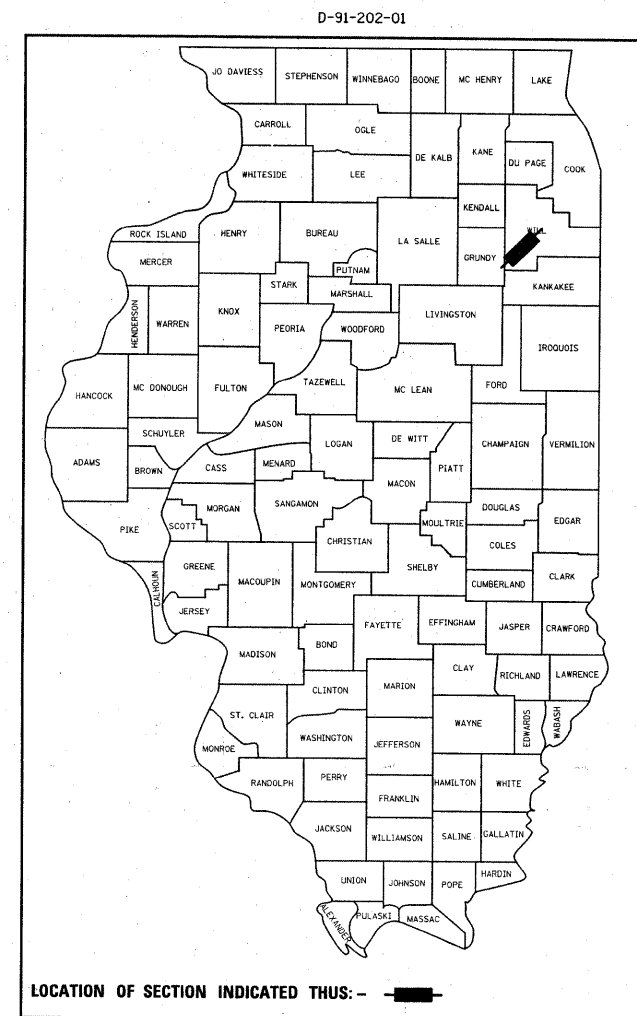
F.A.P. ROUTE 846
FIRST ST. TO GRUNDY COUNTY LINE
SECTION: 5RS-2
RESURFACING (3P)

WILL COUNTY
C-91-202-03

F.A. RTE.	SECTION	COUNTY	TOTAL SHEETS	SHEET NO.
846	5RS-2	WILL	31	1
FED. ROAD DIST. NO.	ILLINOIS	CONTRACT NO. 62648		

FOR INDEX OF SHEETS, SEE SHEET NO. 2

PROJECT IS LOCATED IN THE CITY OF
BRAIDWOOD, THE CITY OF WILMINGTON
AND THE VILLAGE OF GODLEY



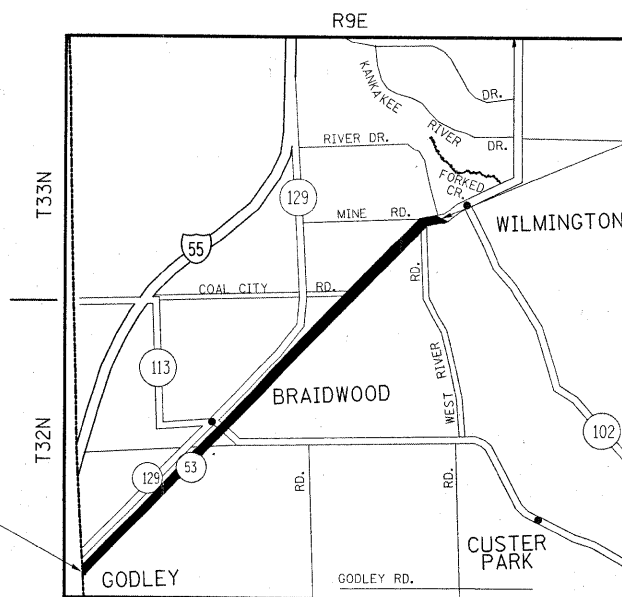
FULL SIZE PLANS HAVE BEEN PREPARED USING STANDARD
ENGINEERING SCALES. REDUCED SIZED PLANS WILL NOT
CONFORM TO STANDARD SCALES. IN MAKING MEASUREMENTS
ON REDUCED PLANS, THE ABOVE SCALES MAY BE USED.

J.U.L.I.E.
JOINT UTILITY LOCATION INFORMATION FOR EXCAVATION
1-800-892-0123
OR 811

OMISSION:
STA. 111+13.97 TO STA. 111+65.61

PROJECT BEGINS:
STA 50+00

PROJECT ENDS:
STA 410+53.62



REED, WILMINGTON, CUSTER TOWNSHIP

TRAFFIC DATA:
2006 ADT = 10,020
SPEED LIMIT = 35 MPH /55 MPH

GROSS LENGTH OF PROJECT = 36,002.69 FT. = 6.82 MILE
NET LENGTH OF PROJECT = 35,882.69 FT. = 6.80 MILE

PROJECT ENGINEER: J.P. CHANG (847) 705-4432
PROJECT MANAGER: KEN ENG

CONTRACT NO. 62648

STATE OF ILLINOIS
DEPARTMENT OF TRANSPORTATION
DIVISION OF HIGHWAYS

SUBMITTED MARCH 10, 2009

Dennis M. O'Keefe
DEPUTY DIRECTOR OF HIGHWAYS, REGION ENGINEER

May 1, 2009
Charles G. Dransfield
ENGINEER OF DESIGN AND ENVIRONMENT

May 1, 2009
Christine M. Reed
DIRECTOR OF HIGHWAYS, CHIEF ENGINEER

PRINTED BY THE AUTHORITY
OF THE STATE OF ILLINOIS