

STATE OF ILLINOIS
DEPARTMENT OF TRANSPORTATION
DIVISION OF HIGHWAYS

PROPOSED HIGHWAY PLANS

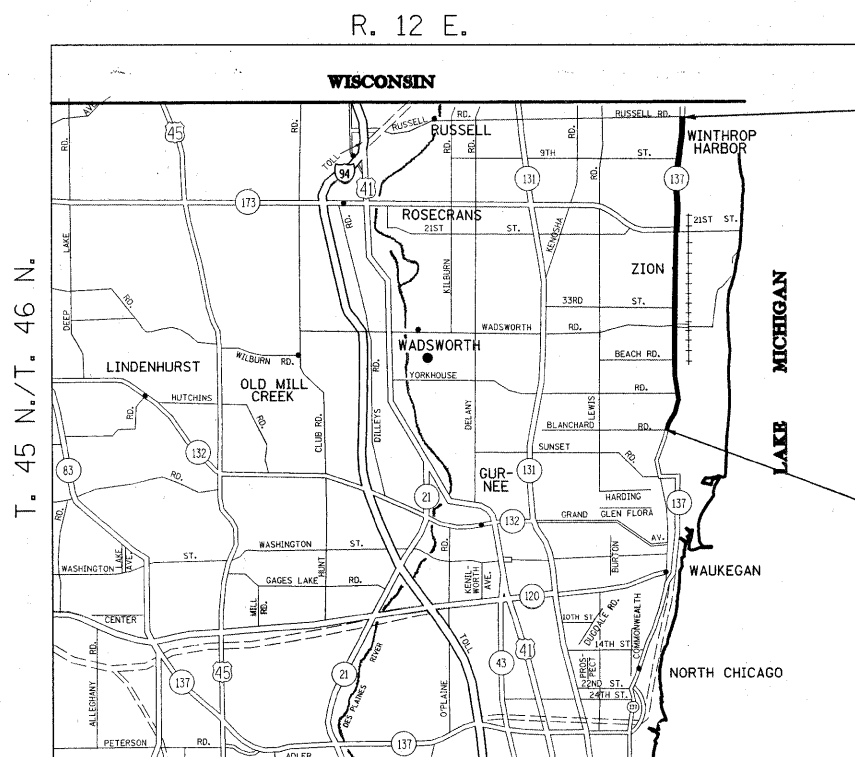
F.A.P. ROUTE 352: ILL RTE. 137
SECTION: (E.M.D) RS-4
BLANCHARD RD. TO RUSSELL RD.
RESURFACING
LAKE COUNTY
C-91-372-02

F.A.P. RTE.	SECTION	COUNTY	TOTAL SHEETS	SHEET NO.
352	(E.M.D) RS-4	LAKE	11	1
FED. ROAD DIST. NO.	ILLINOIS	CONTRACT NO. 62545		

D-91-372-02

FOR INDEX OF SHEETS, SEE SHEET NO. 2

THE IMPROVEMENT IS LOCATED IN THE CITY OF ZION AND IN THE VILLAGES OF WINTHROP HARBOR AND BEACH PARK



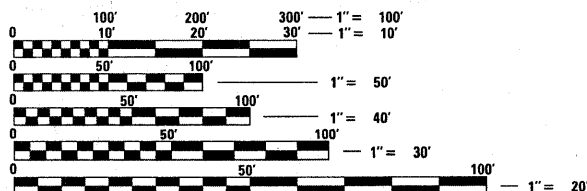
IMPROVEMENT ENDS
STA. 499 + 88

IMPROVEMENT BEGINS
STA. 155 + 72

TRAFFIC DATA
2006 ADT = 18,800
SPEED LIMIT = 40 MPH

BENTON-ZION & WAUKEGAN TOWNSHIPS

GROSS & LENGTH OF IMPROVEMENT = 34,416 LIN. FT. = 6.52 MILES



FULL SIZE PLANS HAVE BEEN PREPARED USING STANDARD ENGINEERING SCALES. REDUCED SIZED PLANS WILL NOT CONFORM TO STANDARD SCALES. IN MAKING MEASUREMENTS ON REDUCED PLANS, THE ABOVE SCALES MAY BE USED.

J.U.L.I.E.
JOINT UTILITY LOCATION INFORMATION FOR EXCAVATION
1-800-892-0123
OR 811

PROJECT ENGINEER - DAN WILGREEN (847) 705-4240
PROJECT MANAGER - KEN ENG (847) 705-4247

CONTRACT NO. 62545

STATE OF ILLINOIS
DEPARTMENT OF TRANSPORTATION
DIVISION OF HIGHWAYS

SUBMITTED APRIL 20, 20 09

Diane M. O'Keefe
DEPUTY DIRECTOR OF HIGHWAYS, REGION ENGINEER

May 1, 20 09
Charles S. Dransoll
ENGINEER OF DESIGN AND ENVIRONMENT

May 1, 20 09
Christina M. Reed
DIRECTOR OF HIGHWAYS, CHIEF ENGINEER

PRINTED BY THE AUTHORITY
OF THE STATE OF ILLINOIS