

F.A.U. RTE. 1549 / 3565	SECTION BR-RS	COUNTY COOK	TOTAL SHEETS 13	SHEET NO. 1
FED. ROAD DIST. NO. 1	ILLINOIS	CONTRACT NO. 60H42		

STATE OF ILLINOIS
DEPARTMENT OF TRANSPORTATION
DIVISION OF HIGHWAYS

**PROPOSED
HIGHWAY PLANS**

F.A.U. RTE. 1549 / 3565 IL. RTE. 171 WEST BOUND CONNECTOR
SECTION: BR-RS
IL. RTE. 171 TO U.S. 12 / 20 / 45
RESURFACING (3P)

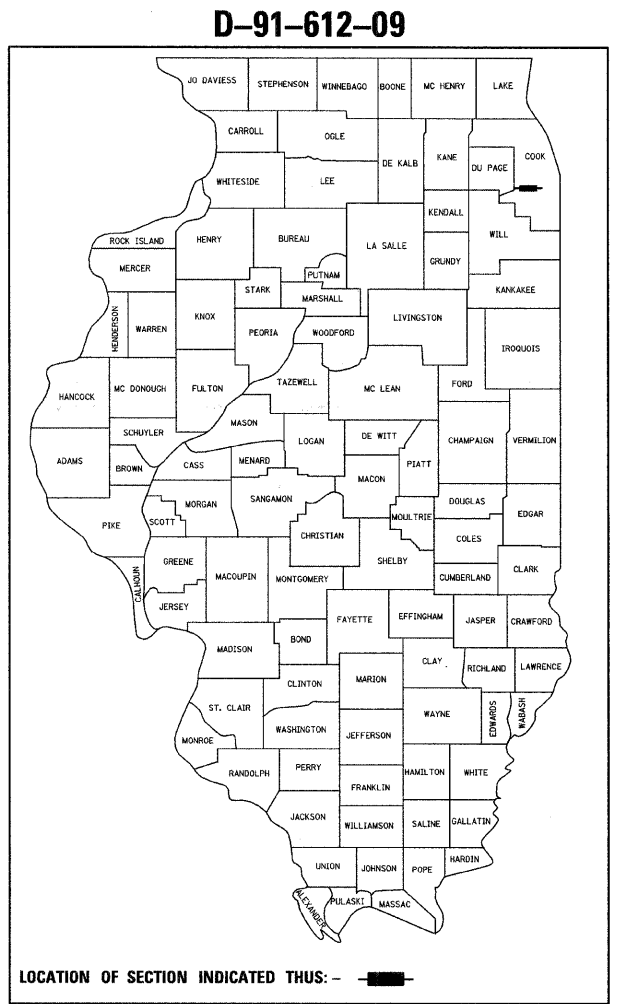
COOK COUNTY
C-91-612-09

LYONS TOWNSHIP
R. 12 E.

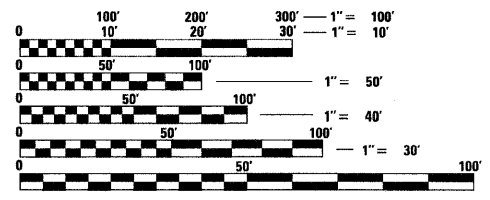
FOR INDEX OF SHEETS, SEE SHEET NO. 2

DESIGN DESIGNATION:
SPEED LIMIT : 45 M.P.H.
2007 ADT = 21,100

PROJECT LOCATED IN THE
VILLAGE OF JUSTICE AND THE
VILLAGE OF WILLOW SPRINGS



LOCATION OF SECTION INDICATED THUS: -



FULL SIZE PLANS HAVE BEEN PREPARED USING STANDARD ENGINEERING SCALES. REDUCED SIZED PLANS WILL NOT CONFORM TO STANDARD SCALES. IN MAKING MEASUREMENTS ON REDUCED PLANS, THE ABOVE SCALES MAY BE USED.

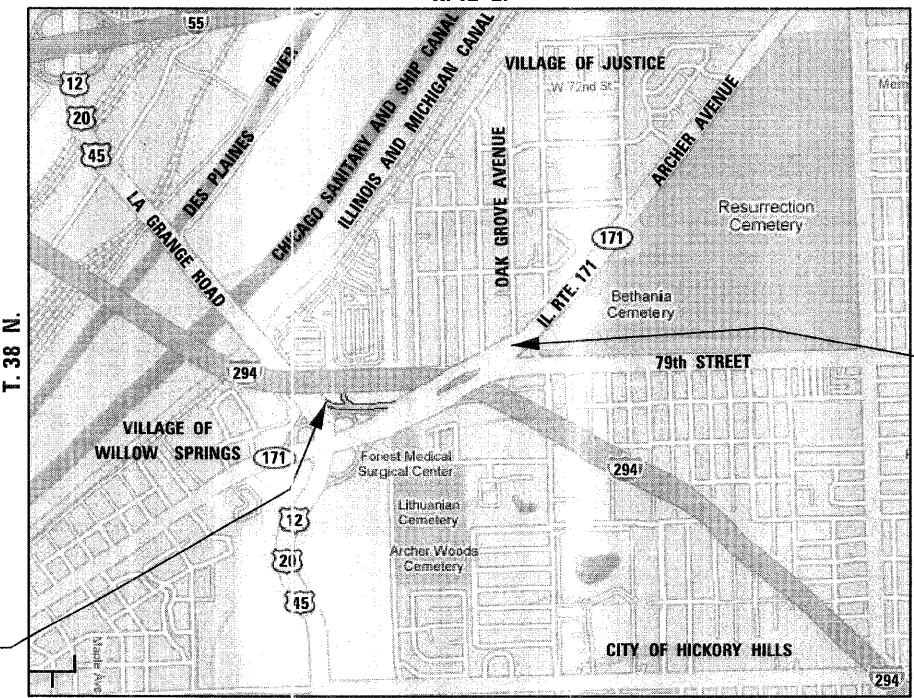
J.U.L.I.E.
JOINT UTILITY LOCATING INFORMATION FOR EXCAVATORS
1-800-892-0123

DISTRICT ONE - PLAN PREP ENGINEER:
KEN ENG (847) 705-4247

CONTRACT NO. 60H42

PAVING OMISSION
STA. 33 + 19 TO
STA. 37 + 17

PROJECT BEGINS
STA. 10 + 00



PROJECT ENDS
STA. 49 + 06

GROSS LENGTH OF PROJECT = 3,906 FEET = 0.740 MILES
NET LENGTH OF PROJECT = 3,508 FEET = 0.664 MILES

STATE OF ILLINOIS
DEPARTMENT OF TRANSPORTATION
DIVISION OF HIGHWAYS

SUBMITTED April 20, 2009
Diana M. O'Keefe DEPUTY DIRECTOR OF HIGHWAYS, REGION ONE ENGINEER
May 1, 2009
Charles J. Ingersoll ENGINEER OF DESIGN AND ENVIRONMENT
May 1, 2009
Christine M. Reed DIRECTOR OF HIGHWAYS, CHIEF ENGINEER



Birinder S. Sachdeva April 20, 2009
BIRINDER S. SACHDEVA, P.E. DATE
EXPIRES: 11-30-2009

CHRISTIAN-ROGE & ASSOCIATES, INC.
ENGINEERS - PLANNERS - SURVEYORS
211 W. WACKER DRIVE CHICAGO, IL. 60606
TELEPHONE: 312-372-2023

PRINTED BY THE AUTHORITY
OF THE STATE OF ILLINOIS