

STATE OF ILLINOIS
DEPARTMENT OF TRANSPORTATION
DIVISION OF HIGHWAYS

**PROPOSED
HIGHWAY PLANS**
FAP ROUTE 341: ILL 72 (HIGGINS RD.)
I-90 TO LOCUST DRIVE
SECTION: 62 RS-2
RESURFACING (3P)
KANE COUNTY
C-91-605-09

F.A.P. RTE.	SECTION	COUNTY	TOTAL SHEETS	SHEET NO.
341	62 RS-2	KANE	30	1
FED. ROAD DIST. NO. 1		ILLINOIS	CONTRACT NO. 60H35	

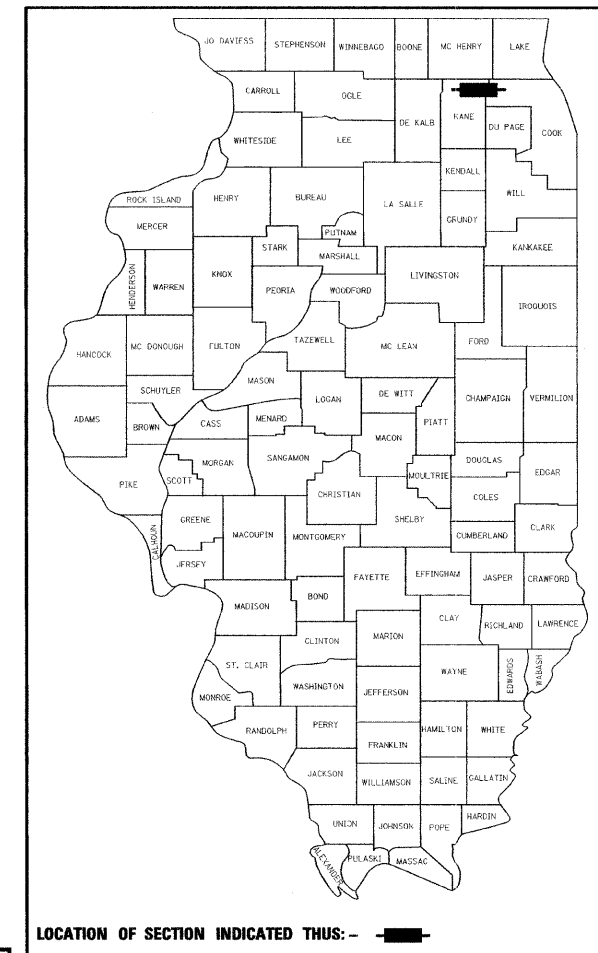
* 30+1 = 31

D-91-605-09

FOR INDEX OF SHEETS, SEE SHEET NO. 2

IMPROVEMENT LOCATED IN THE VILLAGES OF GILBERTS, SLEEPY HOLLOW AND WEST DUNDEE, AND IN THE CITY OF ELGIN

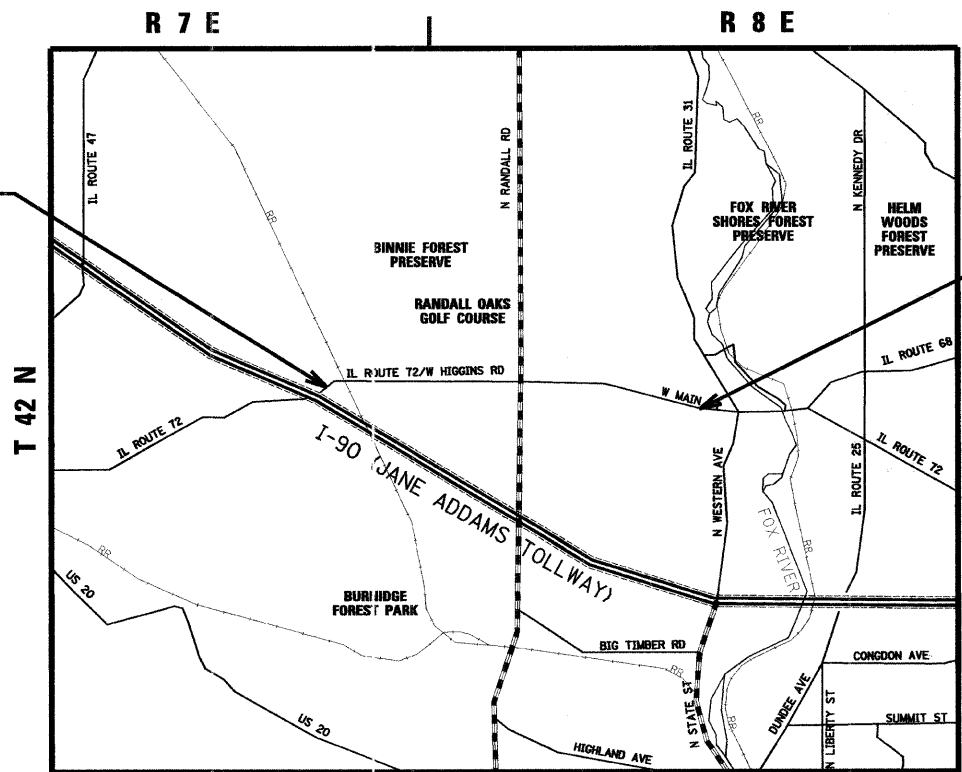
2007 ADT = 18,700 VEHICLES PER DAY
SPEED LIMIT = 45 MPH



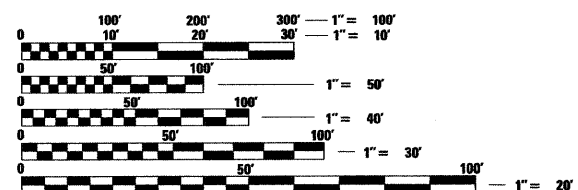
LOCATION OF SECTION INDICATED THIS: - [black rectangle] -

IMPROVEMENT BEGINS
STA 10+00

IMPROVEMENT ENDS
251+61



RUTLAND AND DUNDEE TOWNSHIPS



FULL SIZE PLANS HAVE BEEN PREPARED USING STANDARD ENGINEERING SCALES. REDUCED SIZED PLANS WILL NOT CONFORM TO STANDARD SCALES. IN MAKING MEASUREMENTS ON REDUCED PLANS, THE ABOVE SCALES MAY BE USED.

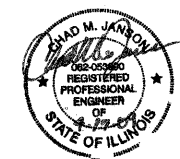
J.U.L.I.E.
JOINT UTILITY LOCATION INFORMATION FOR EXCAVATION
1-800-892-0123
OR 811

PROJECT ENGINEER: MICHELLE AQUINO (847) 705-4606
PROJECT MANAGER: LONG TRAN (847) 705-4232

GROSS & NET LENGTH OF PROJECT = 24161 FT. = 4.58 MILES

LOCATION MAP
NOT TO SCALE

CONTRACT NO. 60H35



STATE OF ILLINOIS
DEPARTMENT OF TRANSPORTATION
DIVISION OF HIGHWAYS

SUBMITTED APRIL 20, 2009
Diane M. O'Keefe DEPUTY DIRECTOR OF HIGHWAYS, REGION ENGINEER
May 1, 2009 Charles J. Ingersoll ENGINEER OF DESIGN AND ENVIRONMENT
May 1, 2009 Christine M. Reed DIRECTOR OF HIGHWAYS, CHIEF ENGINEER

rjngroup
Excellence through Ownership
200 West Front Street
Wheaton, IL 60187

PRINTED BY THE AUTHORITY
OF THE STATE OF ILLINOIS