

F.A.P. RTE.	SECTION	COUNTY	TOTAL SHEETS	SHEET NO.
324	24 RS-3	McHENRY	24	1
FED. ROAD DIST. NO. 1	ILLINOIS	CONTRACT NO. 60H29		

STATE OF ILLINOIS
DEPARTMENT OF TRANSPORTATION
DIVISION OF HIGHWAYS

**PROPOSED
HIGHWAY PLANS**

F.A.P. RTE. 324 (IL. RTE. 23)
SECTION: 24 RS-3
I-90 (NORTHWEST TOLLWAY) TO U.S. 20 (GRANT HIGHWAY)
RESURFACING (3P)

McHENRY COUNTY
C-91-599-09

MARENGO AND RILEY TOWNSHIPS
R. 5 E.

FOR INDEX OF SHEETS, SEE SHEET NO. 2

DESIGN DESIGNATION:
SPEED LIMIT : 30 M.P.H. TO 55 M.P.H.
2007 ADT = 4,200

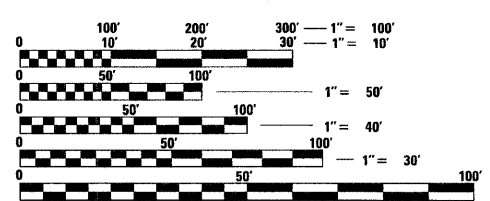
PROJECT LOCATED IN THE
CITY OF MARENGO

D-91-599-09



STATE OF ILLINOIS
DEPARTMENT OF TRANSPORTATION
DIVISION OF HIGHWAYS

SUBMITTED APRIL 20, 2009
Diana M. O'Keefe DEPUTY DIRECTOR OF HIGHWAYS, REGION ONE ENGINEER
May 1, 2009
Charles S. Ingersoll ENGINEER OF DESIGN AND ENVIRONMENT
May 1, 2009
Christine M. Reed DIRECTOR OF HIGHWAYS, CHIEF ENGINEER



FULL SIZE PLANS HAVE BEEN PREPARED USING STANDARD ENGINEERING SCALES. REDUCED SIZED PLANS WILL NOT CONFORM TO STANDARD SCALES. IN MAKING MEASUREMENTS ON REDUCED PLANS, THE ABOVE SCALES MAY BE USED.

J.U.L.I.E.
JOINT UTILITY LOCATING INFORMATION FOR EXCAVATORS
1-800-892-0123

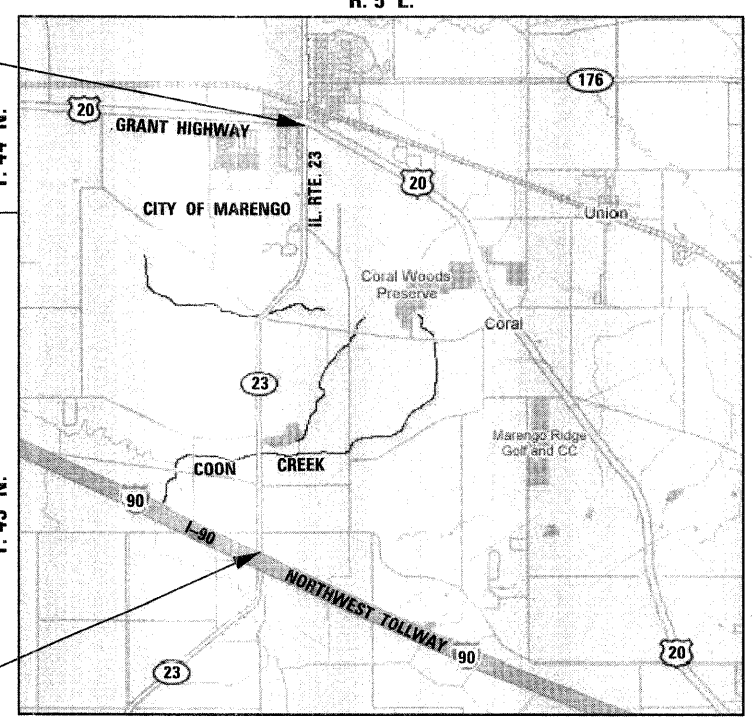
DISTRICT ONE - PLAN PREP ENGINEER:
KEN ENG (847) 705-4247

CONTRACT NO. 60H29

PROJECT ENDS
STA. 276 + 84

PAVING OMISSION
STA. 71 + 73 TO
STA. 75 + 00

PROJECT BEGINS
STA. 11 + 27



GROSS LENGTH OF PROJECT = 26,557 FEET = 5.030 MILES
NET LENGTH OF PROJECT = 26,230 FEET = 4.970 MILES



Birinder S. Sachdeva
BIRINDER S. SACHDEVA, P.E.
EXPIRES: 11-30-2009

April 20, 2009
DATE

CHRISTIAN-ROGE & ASSOCIATES, INC.
ENGINEERS - PLANNERS - SURVEYORS
211 W. WACKER DRIVE CHICAGO, IL. 60606
TELEPHONE: 312-372-2023

PRINTED BY THE AUTHORITY
OF THE STATE OF ILLINOIS