

F.A.P. RTE.	SECTION	COUNTY	TOTAL SHEETS	SHEET NO.
305	1518 RS-2	COOK	19	1
FED. ROAD DIST. NO. 1		ILLINOIS	CONTRACT NO. 60H14	

STATE OF ILLINOIS
DEPARTMENT OF TRANSPORTATION
DIVISION OF HIGHWAYS

**PROPOSED
HIGHWAY PLANS**

FAP 305 WILLOW ROAD
SECTION: 1518 RS-2
S00 LINE R.R. TO EAST OF IL. RTE. 43 (WAUKEGAN ROAD)
RESURFACING (3P)

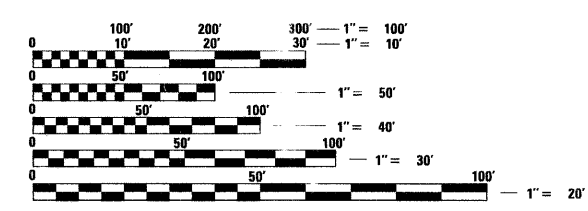
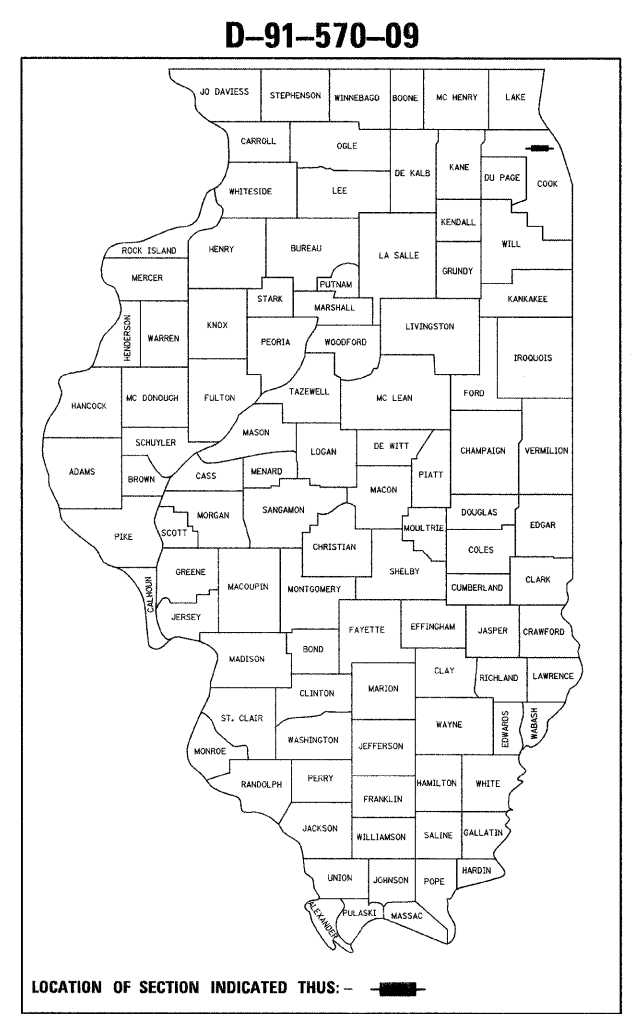
FOR INDEX OF SHEETS, SEE SHEET NO. 2

DESIGN DESIGNATION:
SPEED LIMIT : 40 M.P.H. & 45 M.P.H.
2007 ADT = 35,000

PROJECT LOCATED IN THE
VILLAGE OF GLENVIEW AND THE
VILLAGE OF NORTHBROOK AND THE
VILLAGE OF NORTHFIELD

COOK COUNTY
C-91-570-09

NORTHFIELD TOWNSHIP
R. 12 E.



FULL SIZE PLANS HAVE BEEN PREPARED USING STANDARD ENGINEERING SCALES. REDUCED SIZED PLANS WILL NOT CONFORM TO STANDARD SCALES. IN MAKING MEASUREMENTS ON REDUCED PLANS, THE ABOVE SCALES MAY BE USED.

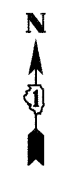
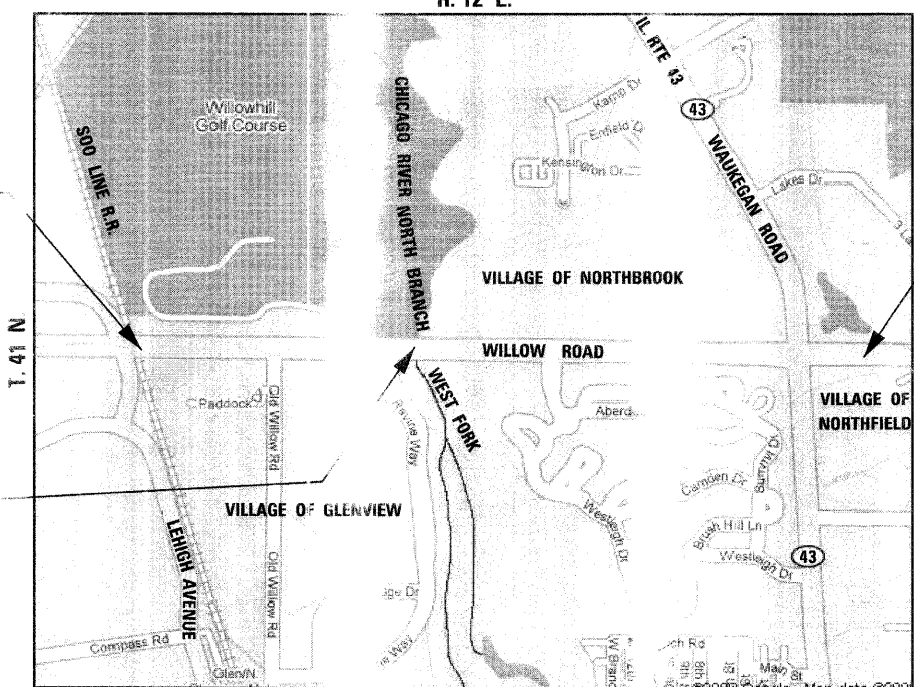
J.U.L.I.E.
JOINT UTILITY LOCATING INFORMATION FOR EXCAVATORS
1-800-892-0123
OR 811

DISTRICT ONE - PLAN PREP ENGINEER:
KEN ENG (847) 705-4247

CONTRACT NO. 60H14

PROJECT BEGINS
STA. 119 + 13

PAVING OMISSION
STA. 139 + 98 TO
STA. 140 + 98



PROJECT ENDS
STA. 176 + 82

GROSS LENGTH OF PROJECT = 5,769 FEET = 1.093 MILES
NET LENGTH OF PROJECT = 5,669 FEET = 1.074 MILES



Birinder S. Sachdeva
BIRINDER S. SACHDEVA, P.E.
EXPIRES: 11-30-2009

April 10, 2009
DATE

STATE OF ILLINOIS
DEPARTMENT OF TRANSPORTATION
DIVISION OF HIGHWAYS

SUBMITTED April 14, 2009

Diana M. O'Keefe
DEPUTY DIRECTOR OF HIGHWAYS, REGION ONE ENGINEER

May 1, 2009
Charles S. Ingersoll
ENGINEER OF DESIGN AND ENVIRONMENT

May 1, 2009
Christine M. Reed
DIRECTOR OF HIGHWAYS, CHIEF ENGINEER

PRINTED BY THE AUTHORITY
OF THE STATE OF ILLINOIS

CHRISTIAN-ROGE & ASSOCIATES, INC.
ENGINEERS - PLANNERS - SURVEYORS
211 W. WACKER DRIVE CHICAGO, IL 60606
TELEPHONE: 312-372-2023