

STATE OF ILLINOIS  
 DEPARTMENT OF TRANSPORTATION  
 DIVISION OF HIGHWAYS

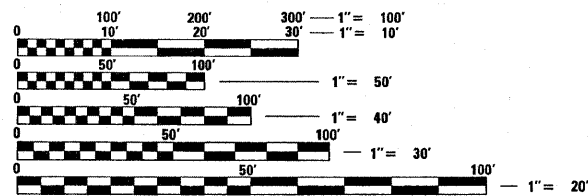
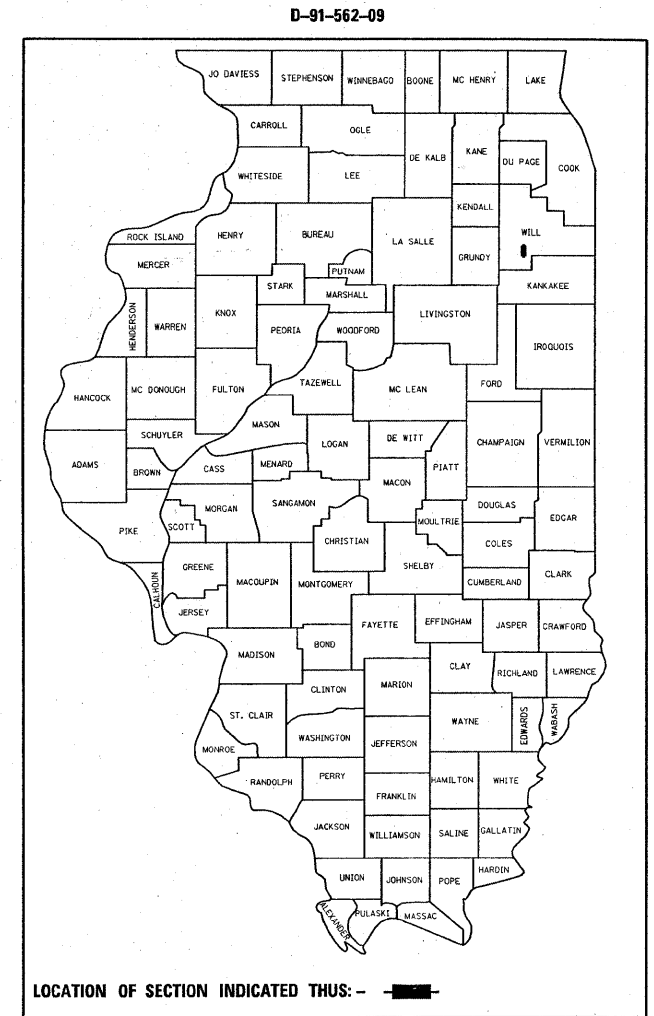
# PROPOSED HIGHWAY PLANS

CH 07 (OLD CHICAGO RD.)  
 3.7 MI. N. OF IL 102 TO IL 102  
 RESURFACING (MAINTENANCE)  
 SECTION: 38 RS-6  
 WILL COUNTY  
 C-91-562-09

F.A.P. RTE.	SECTION	COUNTY	TOTAL SHEETS	SHEET NO.
607	128 RS-5	WILL	19	1
FED. ROAD DIST. NO. 1		ILLINOIS	CONTRACT NO. 60H06	

FOR INDEX OF SHEETS, SEE SHEET NO. 2

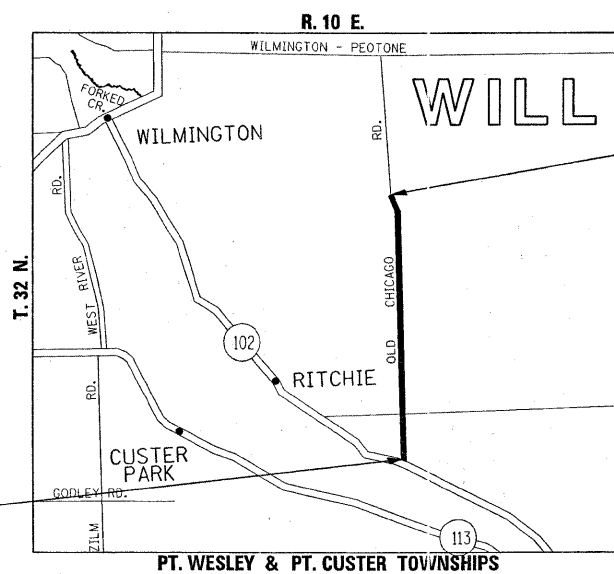
IMPROVEMENT LOCATED IN THE VILLAGE OF WESLEY



FULL SIZE PLANS HAVE BEEN PREPARED USING STANDARD ENGINEERING SCALES. REDUCED SIZED PLANS WILL NOT CONFORM TO STANDARD SCALES. IN MAKING MEASUREMENTS ON REDUCED PLANS, THE ABOVE SCALES MAY BE USED.

J.U.L.I.E.  
 JOINT UTILITY LOCATION INFORMATION FOR EXCAVATION  
 1-800-892-0123  
 OR 811

IMPROVEMENT BEGINS  
 STA. 0 + 69



TRAFFIC DATA:  
 2008 ADT - 1150  
 SPEED LIMIT - 45 TO 50 MPH

IMPROVEMENT ENDS  
 STA. 196 + 23

GROSS AND NET LENGTH OF IMPROVEMENT = 19554 LIN FT = 3.71 MILES

PROJECT ENGINEER: JENPAI CHANG (847) 705-4432  
 PROJECT MANAGER: KEN ENG (847) 705-4247

CONTRACT NO. 60H06

STATE OF ILLINOIS  
 DEPARTMENT OF TRANSPORTATION  
 DIVISION OF HIGHWAYS

SUBMITTED APRIL 20, 2009  
Dennis M. O'Keefe Jr.  
 DEPUTY DIRECTOR OF HIGHWAYS, REGION ENGINEER

May 1, 2009  
Charles J. Ingersoll  
 ENGINEER OF DESIGN AND ENVIRONMENT

May 1, 2009  
Christine M. Reed  
 DIRECTOR OF HIGHWAYS, CHIEF ENGINEER

PRINTED BY THE AUTHORITY  
 OF THE STATE OF ILLINOIS