

F.A.U. RTE.	SECTION	COUNTY	TOTAL SHEETS	SHEET NO.
3532	0103RS-6	COOK	22	1
FED. ROAD DIST. NO. 1	ILLINOIS	CONTRACT NO. 60G85		

**STATE OF ILLINOIS**  
**DEPARTMENT OF TRANSPORTATION**  
**DIVISION OF HIGHWAYS**

**PROPOSED HIGHWAY PLANS**

**FAU 3532: FOREST PRESERVE DRIVE  
BELMONT AVE. TO MONTROSE AVE.**

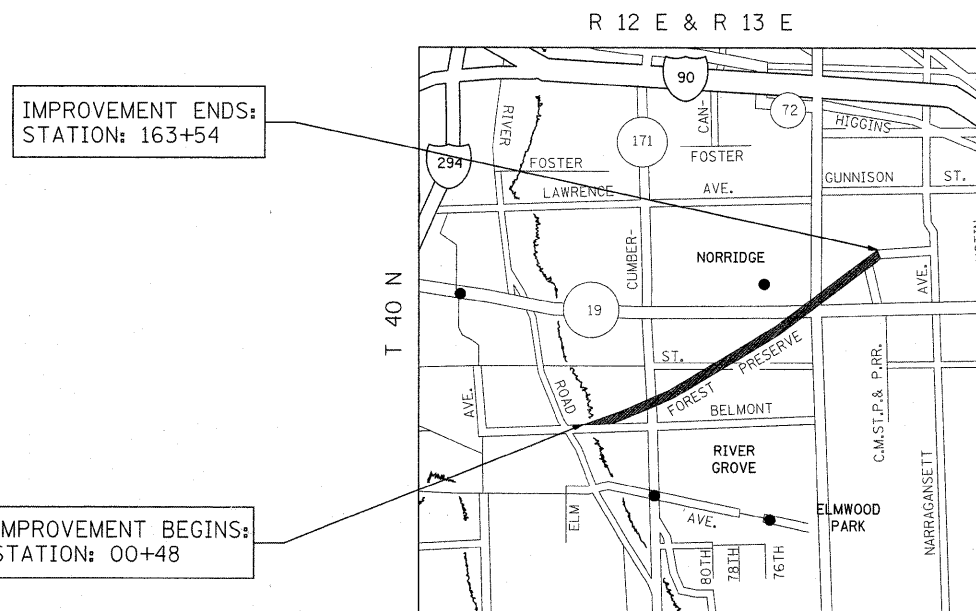
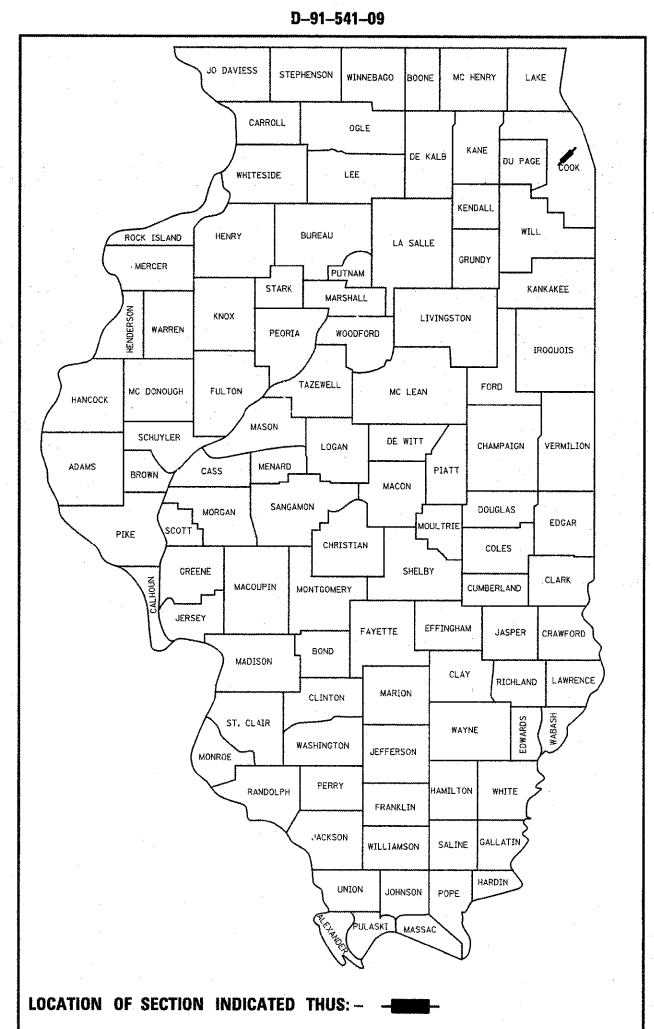
**SECTION: 0103RS-6**

**RESURFACING  
COOK COUNTY**

**C-91-541-09**

**FOR INDEX OF SHEETS, SEE SHEET NO. 2**

IMPROVEMENT LOCATED IN THE CITY OF CHICAGO AND THE VILLAGES OF NORRIDGE AND HARWOOD HEIGHTS.



IMPROVEMENT ENDS:  
STATION: 163+54

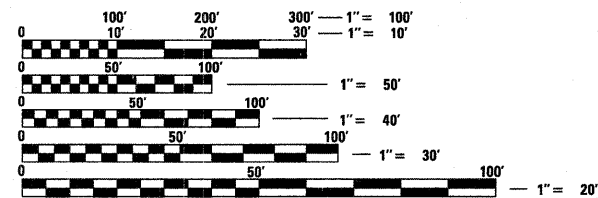
IMPROVEMENT BEGINS:  
STATION: 00+48



TRAFFIC DATA

2006 ADT = 21,500

SPEED LIMIT = 30-40 MPH



FULL SIZE PLANS HAVE BEEN PREPARED USING STANDARD ENGINEERING SCALES. REDUCED SIZED PLANS WILL NOT CONFORM TO STANDARD SCALES. IN MAKING MEASUREMENTS ON REDUCED PLANS, THE ABOVE SCALES MAY BE USED.

J.U.L.I.E.  
JOINT UTILITY LOCATION INFORMATION FOR EXCAVATION  
1-800-892-0123  
OR 811

TOWN OF JEFFERSON & NORWOOD PARK TOWNSHIP

GROSS AND NET LENGTH OF IMPROVEMENT = 16,306 FEET = 3.09 MILES

**PROJECT ENGINEER: JOSE DOMINGUEZ (847) 705-4385**  
**PROJECT MANAGER: KEN ENG**

**CONTRACT NO. 60G85**

STATE OF ILLINOIS  
DEPARTMENT OF TRANSPORTATION  
DIVISION OF HIGHWAYS

SUBMITTED APRIL 16, 2009

*Diana M. O'Keefe*  
DEPUTY DIRECTOR OF HIGHWAYS, REGION ENGINEER

May 1, 2009  
*Charles J. Graessle*  
ENGINEER OF DESIGN AND ENVIRONMENT

May 1, 2009  
*Christine M. Reed*  
DIRECTOR OF HIGHWAYS, CHIEF ENGINEER

**PRINTED BY THE AUTHORITY  
OF THE STATE OF ILLINOIS**