

F.A.U. RTE.	SECTION	COUNTY	TOTAL SHEETS	SHEET NO.
3578	3178 RS-2	COOK	27	1
FED. ROAD DIST. NO.		ILLINOIS	CONTRACT NO. 60G82	

D-91-538-09

**PROJECT LOCATED IN THE CITY OF CHICAGO**

**STATE OF ILLINOIS  
DEPARTMENT OF TRANSPORTATION  
DIVISION OF HIGHWAYS**

**PROPOSED  
HIGHWAY PLANS**

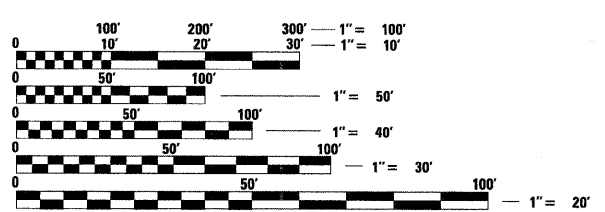
**FAU ROUTE 3578 (COLUMBUS DRIVE)  
WESTERN AVENUE TO 87TH STREET**

**SECTION: 3178 RS-2  
RESURFACING (3P)**

**COOK COUNTY  
C-91-538-09**

FOR INDEX OF SHEETS, SEE SHEET NO. 2

ADT 15100 (2006)  
SPEED LIMIT 30 MPH

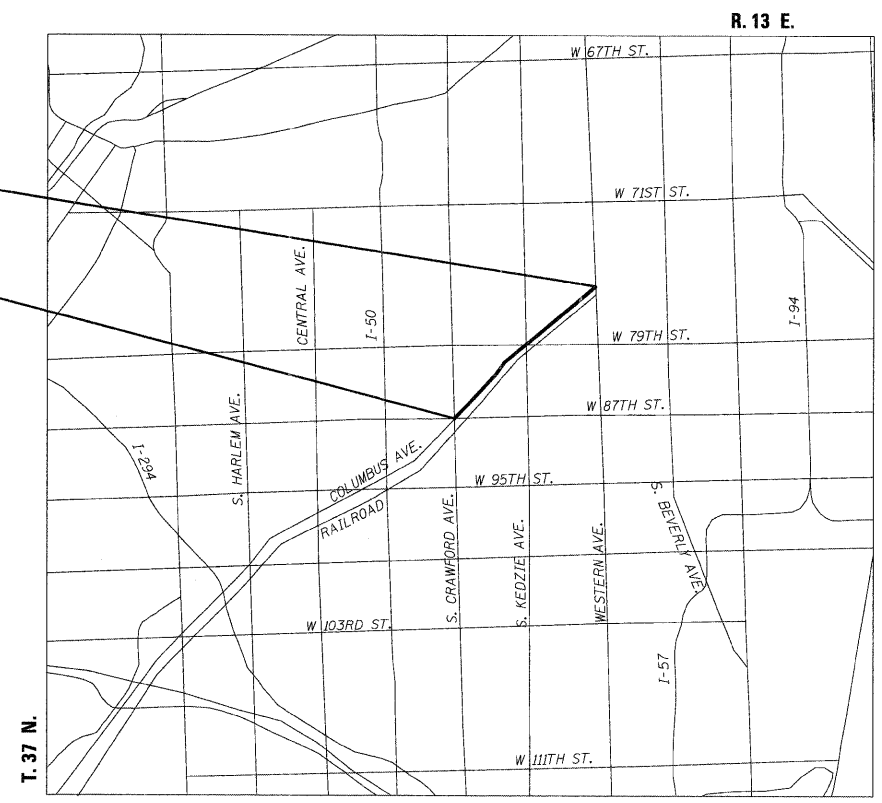


FULL SIZE PLANS HAVE BEEN PREPARED USING STANDARD ENGINEERING SCALES. REDUCED SIZED PLANS WILL NOT CONFORM TO STANDARD SCALES. IN MAKING MEASUREMENTS ON REDUCED PLANS, THE ABOVE SCALES MAY BE USED.

**C.U.A.N.  
CHICAGO UTILITY ALERT NETWORK  
1-312-744-7000**

**PROJECT MANAGER: RAJENDRA C. SHAH (847) 705-4555  
PROJECT ENGINEER: ERSKINE W. KLYCE (847) 705-4594**

**CONTRACT NO. 60G82**



PROJECT ENDS  
STA. 149 + 42

PROJECT BEGINS  
STA. 10 + 00



*LOCATION SKETCH*

NET AND GROSS LENGTH OF PROJECT = 13,942' = 2.641 MI

STATE OF ILLINOIS  
DEPARTMENT OF TRANSPORTATION  
DIVISION OF HIGHWAYS

SUBMITTED APRIL 21 2009

*Diane M. O'Keefe*  
DEPUTY DIRECTOR OF HIGHWAYS, REGION ENGINEER

*May 1, 2009*  
*Charles J. Ingersoll*  
ENGINEER OF DESIGN AND ENVIRONMENT

*May 1, 2009*  
*Christine M. Reed*  
DIRECTOR OF HIGHWAYS, CHIEF ENGINEER

**PRINTED BY THE AUTHORITY  
OF THE STATE OF ILLINOIS**

**LOWCO, INC.**  
CONSULTING ENGINEERS  
1560 WALL ST., SUITE 222  
NAPERVILLE, ILLINOIS 60563 PH: (630) 577-9100

*William H. Bepp*  
REGISTERED PROFESSIONAL ENGINEER  
*W. Bepp*  
Expires 11-30-09