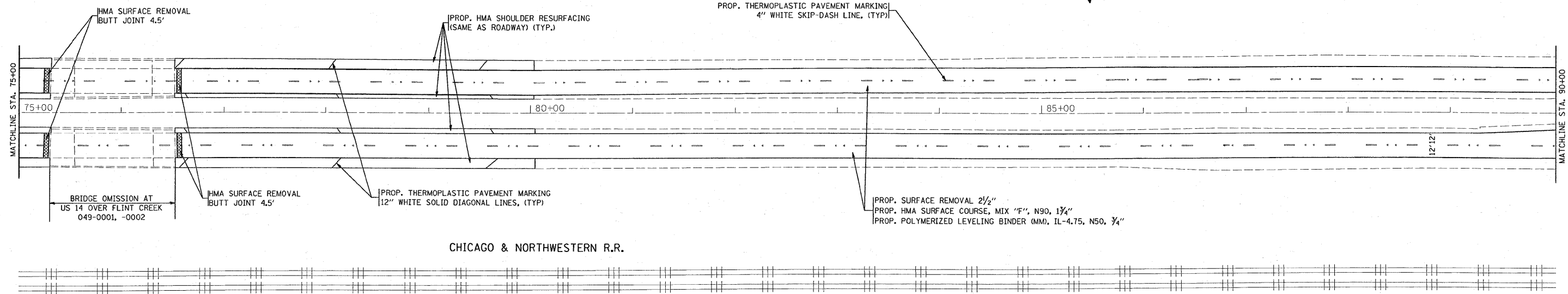
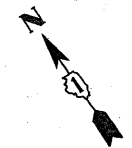
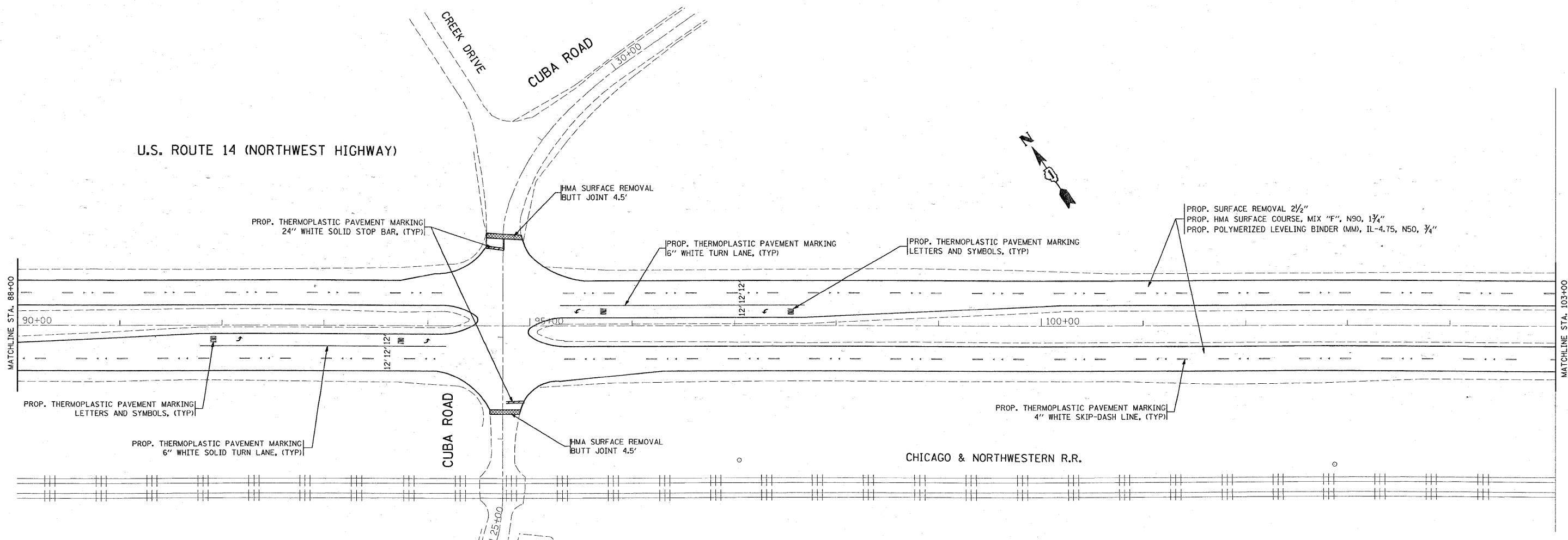
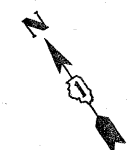


U.S. ROUTE 14 (NORTHWEST HIGHWAY)



CHICAGO & NORTHWESTERN R.R.

U.S. ROUTE 14 (NORTHWEST HIGHWAY)



CHICAGO & NORTHWESTERN R.R.

FILE NAME =	USER NAME = midjje	DESIGNED -	REVISED -	<b>STATE OF ILLINOIS DEPARTMENT OF TRANSPORTATION</b>	<b>ROADWAY AND PAVEMENT MARKING PLAN U.S. RTE. 14 (NORTHWEST HWY) McHENRY CO. LINE - HART RD.</b>	F.A.P. RTE.	SECTION	COUNTY	TOTAL SHEETS	SHEET NO.	
et\p\work\p\midjje\0136322\015160	-sht\plan.dgn	DRAWN -	REVISED -			305	24 R-RS-2	LAKE	18	7	
	PLOT SCALE = 50.0000 ' / IN.	CHECKED -	REVISED -			CONTRACT NO. 60660					
	PLOT DATE = 4/15/2009	DATE -	REVISED -			ILLINOIS FED. AID PROJECT					
					SCALE: 1"=50'	SHEET NO. OF SHEETS	STA. TO STA.				