

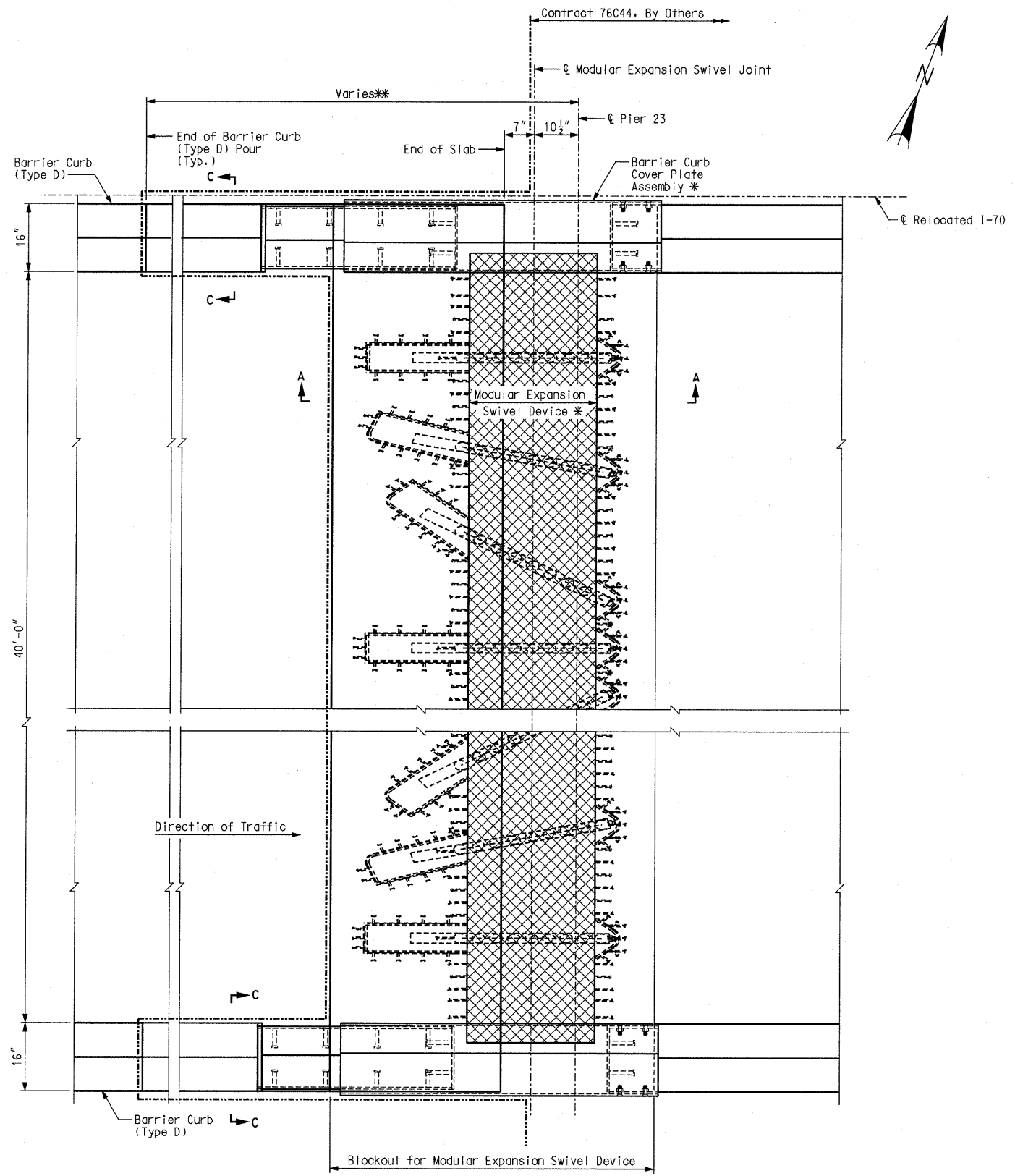
F.A. ROUTE	SECTION
999	82-1B-2
FED. AID PROJECT	ILLINOIS
COUNTY	ST. CLAIR
USER NAME = jcolliff	
PLOT SCALE = #SCALE#	
PLOT DATE = 4/14/2010	
DESIGNED - HNTB	
CHECKED - CMT	
DRAWN - CMT / HNTB	
REVISED -	
REVISED -	
REVISED -	
REVISED -	

ILLINOIS APPROACH STRUCTURE FOR NEW I-70 MISSISSIPPI RIVER BRIDGE

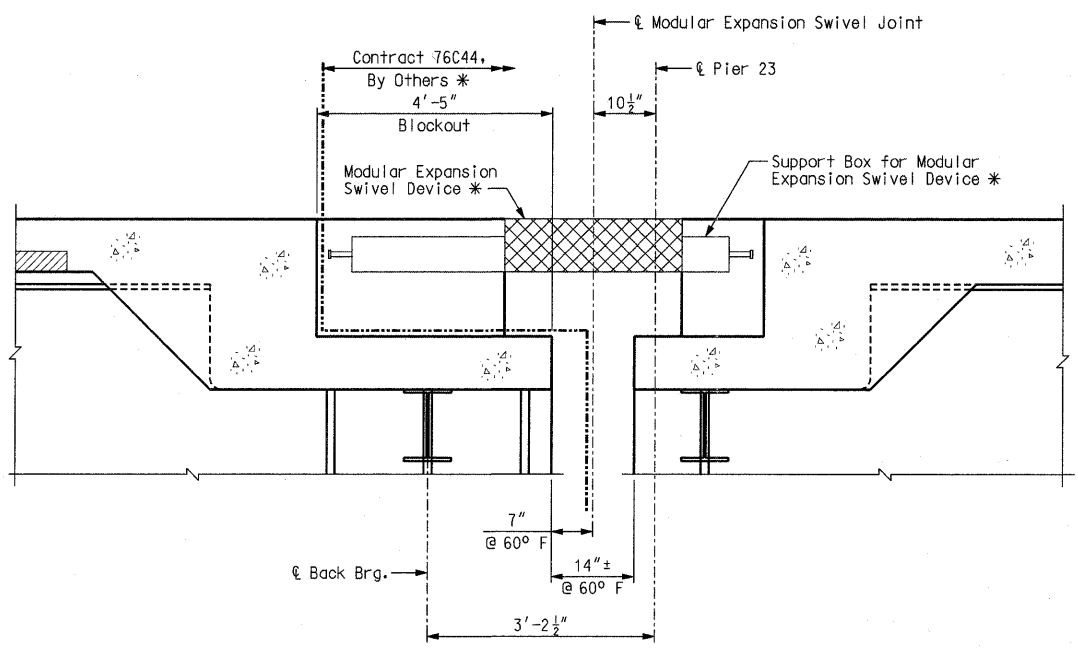
STATE OF ILLINOIS
DEPARTMENT OF TRANSPORTATION
MISSOURI HIGHWAYS AND TRANSPORTATION COMMISSION

HNTB
715 KIRK DRIVE
KANSAS CITY, MO 64105
TELEPHONE (816) 472-1201
CERTIFICATE OF AUTHORITY NO. 001270

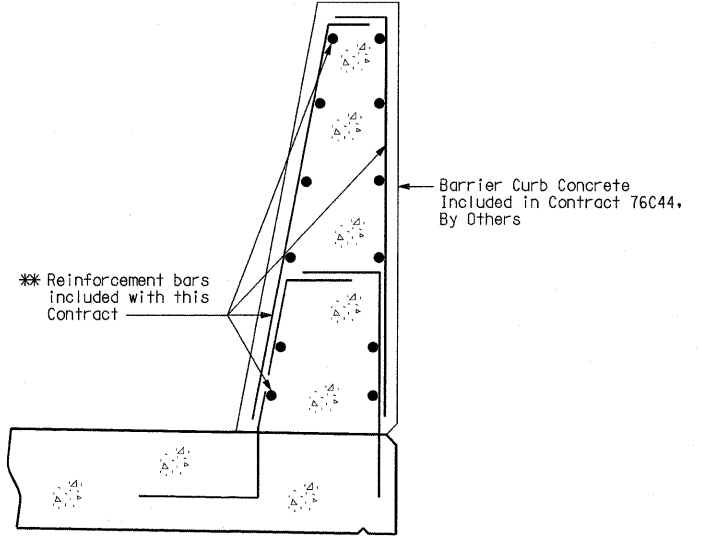
CMT
CRAWFORD, MURPHY & TILLY, INC.
2750 WEST WASHINGTON STREET
SPRINGFIELD, IL 62702
TELEPHONE (217) 787-8050
ENGINEERING CORPORATION - 000631



DECK PLAN



SECTION A-A



SECTION C-C

Notes:
 For slab reinforcing at Expansion Joints, see Sheet No. 100.
 * For details of Barrier Curb (Type D), see Sheet Nos. 109 thru 118.
 * Barrier segment, barrier curb cover plate assembly, and Modular Expansion Swivel Joint included in Contract 76C44, By Others.