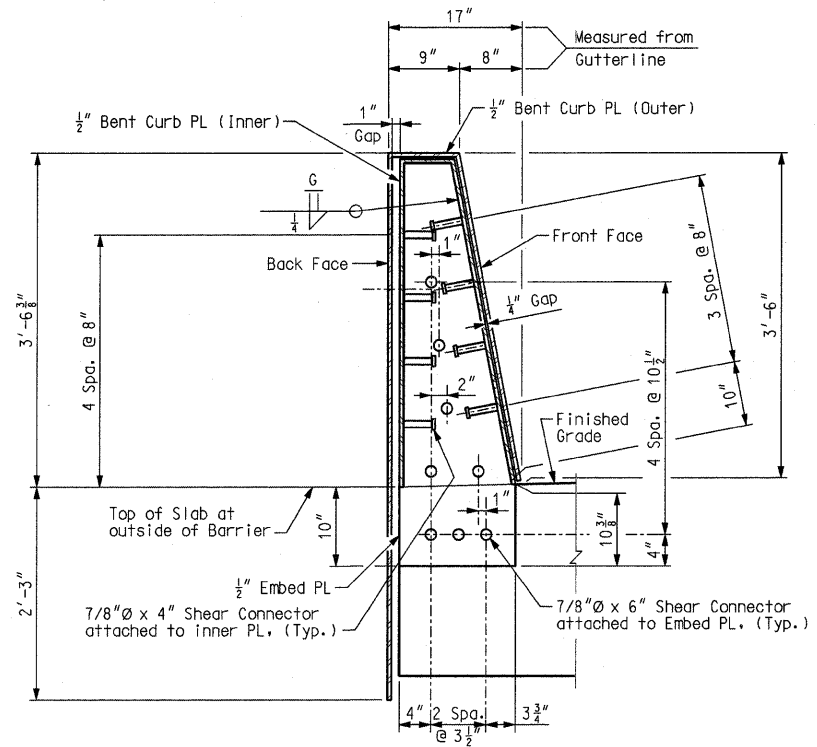
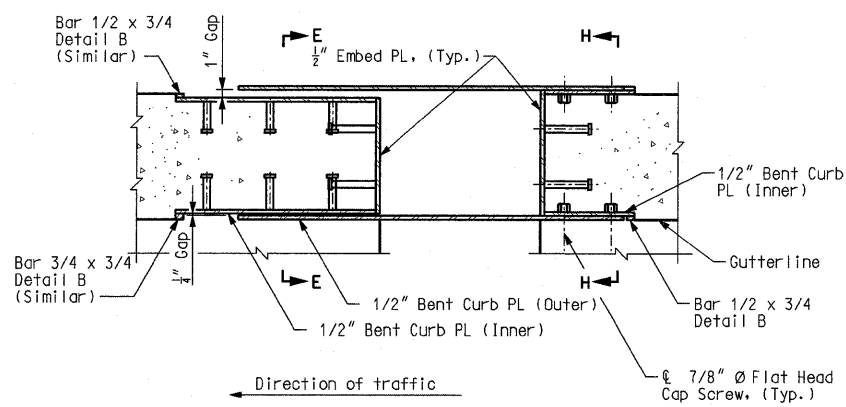


ELEVATION - BARRIER CURB COVER PLATES

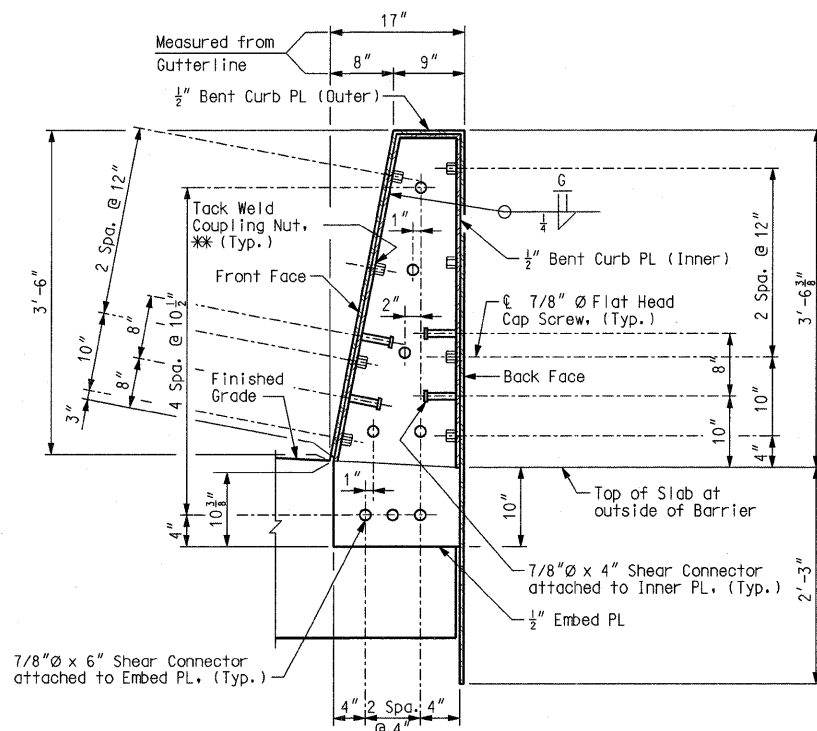
WB - Left Barrier  
EB - Right Barrier



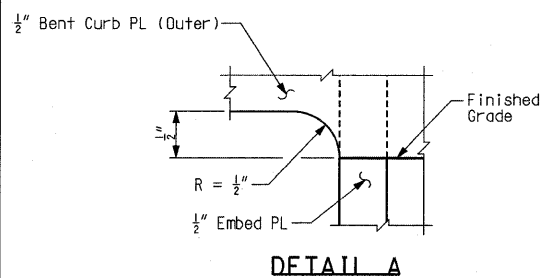
SECTION E-E



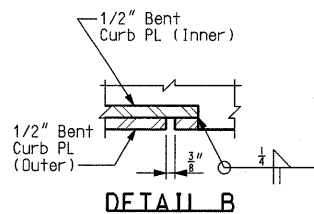
SECTION C-C



SECTION H-H



DETAIL A



DETAIL B

Notes:

- \* Gap dimension @ 60°F is dependent upon modular expansion joint selection. Contractor is responsible for coordinating any revisions required due to deviations from dimensions shown.
- Barrier curb cover plates shall be ASTM A240 Type 304 stainless steel.
- Payment for furnishing and installing the barrier curb cover plates will be considered completely covered by the contract unit price for Modular Expansion Joint per linear foot.
- \*\* Plug end of coupling nut to maintain void for screw placement.
- Flat head cap screws shall be in accordance with ASTM A449.

BARRIER CURB COVER PLATE DETAILS - PIER 17 (1 OF 2)

Detailed JUL 2009  
Checked JUL 2009

Note: This drawing is not to scale. Follow dimensions.

Sheet No. 119 of 152

s:\idot\0906601\draw\_idot\cadd\_sheets\structural\B\_A6500\_119-152\_J610984C\_119.dgn

CONTRACT NO. 76D61

F.A. ROUTE SECTION

999 82-1B-2

FED. AID PROJECT ILLINOIS

COUNTY ST. CLAIR

USER NAME = jjoilliff

PLOT SCALE = #SCALE#

PLOT DATE = 4/14/2010

DESIGNED - HNTB

CHECKED - CMT

DRAWN - CMT / HNTB

REVISED -

REVISED -

REVISED -

REVISED -

ILLINOIS APPROACH STRUCTURE  
FOR NEW I-70 MISSISSIPPI RIVER BRIDGE

STATE OF ILLINOIS  
DEPARTMENT OF TRANSPORTATION  
MISSOURI HIGHWAYS  
AND TRANSPORTATION COMMISSION

HNTB

715 KIRK DRIVE  
KANSAS CITY, MO 64105  
TELEPHONE (816) 472-1201  
CERTIFICATE OF AUTHORITY  
NO. 001270

CMT

CRAWFORD, MURPHY & TILLY, INC.  
2150 WEST WASHINGTON STREET  
SPRINGFIELD, IL 62702  
TELEPHONE (217) 787-8050  
ENGINEERING CORPORATION - 000631