

F.A. ROUTE	SECTION
999	82-1B-2
FED. AID PROJECT	ILLINOIS
COUNTY	ST. CLAIR

USER NAME = Jjelliff
PLOT SCALE = #SCALE#
PLOT DATE = 4/14/2010
DESIGNED - HNTB
CHECKED - CMT
DRAWN - CMT / HNTB
REVISED -
REVISED -
REVISED -
REVISED -

ILLINOIS APPROACH STRUCTURE FOR NEW I-70 MISSISSIPPI RIVER BRIDGE

STATE OF ILLINOIS  
DEPARTMENT OF TRANSPORTATION

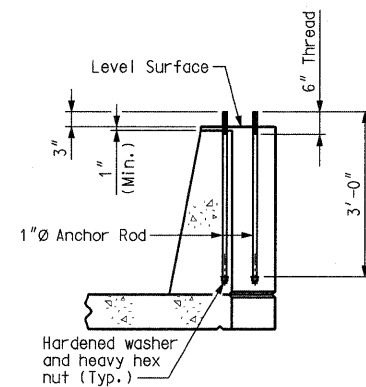
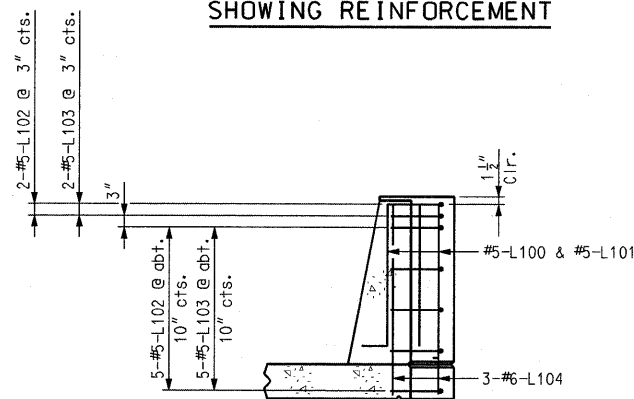
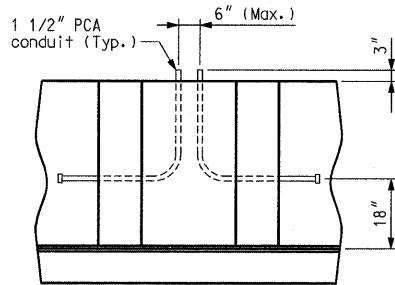
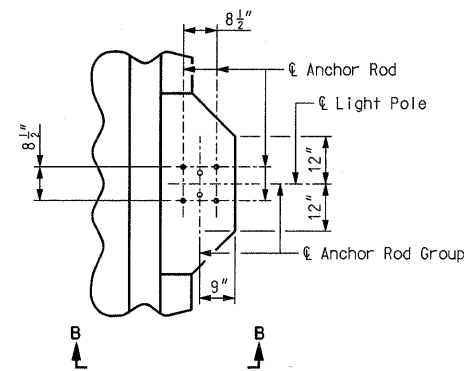
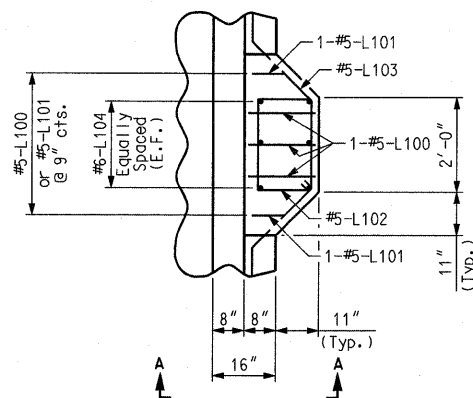
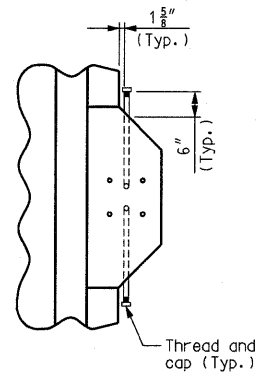
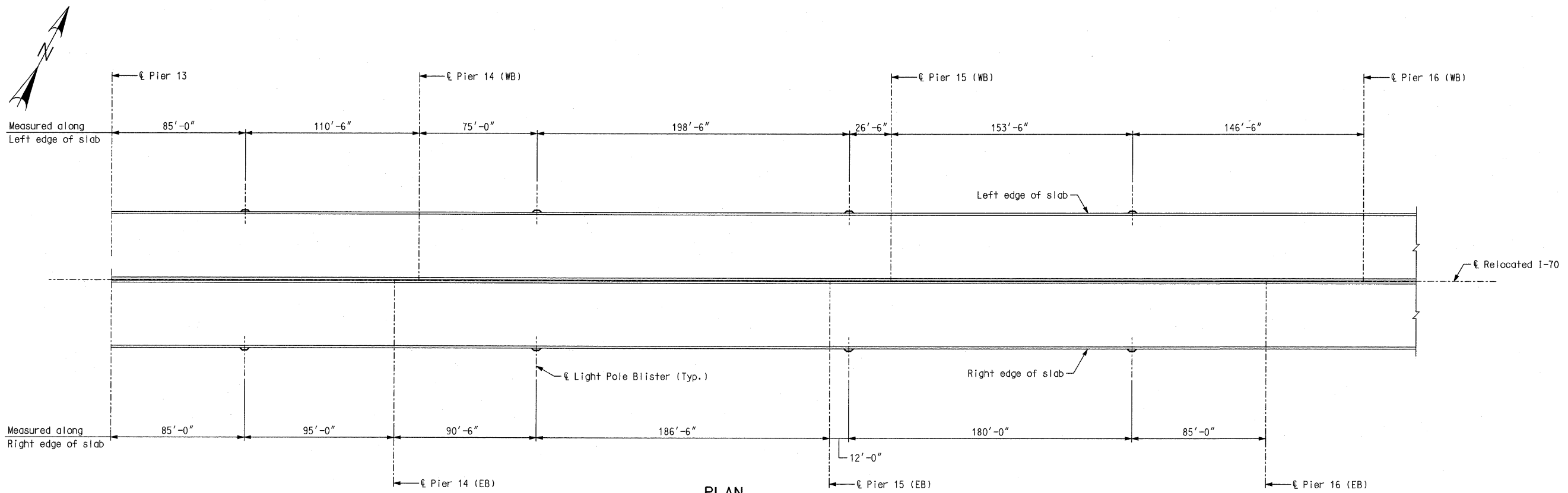
MISSOURI HIGHWAYS AND TRANSPORTATION COMMISSION

**HNTB**

715 KIRK DRIVE  
KANSAS CITY, MO 64105  
TELEPHONE (816) 472-1201  
CERTIFICATE OF AUTHORITY NO. 001270

**CMT**

CRAWFORD, MURPHY & TILLY, INC.  
2750 WEST WASHINGTON STREET  
SPRINGFIELD, IL 62702  
TELEPHONE (217) 787-8050  
ENGINEERING CORPORATION - 000631



Notes:  
Anchor rods and nuts shall be AASHTO M314-90 Grade 55.  
Anchor rods, nuts and washers shall be fully galvanized.  
Anchor rods shall be placed vertically.  
Light poles and wiring are to be furnished in contract J610984, by Others.  
Cost of steel reinforcement, anchor rods, nuts, washers and conduits will be considered completely covered by contract unit price for "Barrier Curb (Type D)" per linear foot.  
See sheet nos. 4 thru 5 for surface mounted light units for railroad tracks.

LIGHT POLE BLISTER LAYOUT