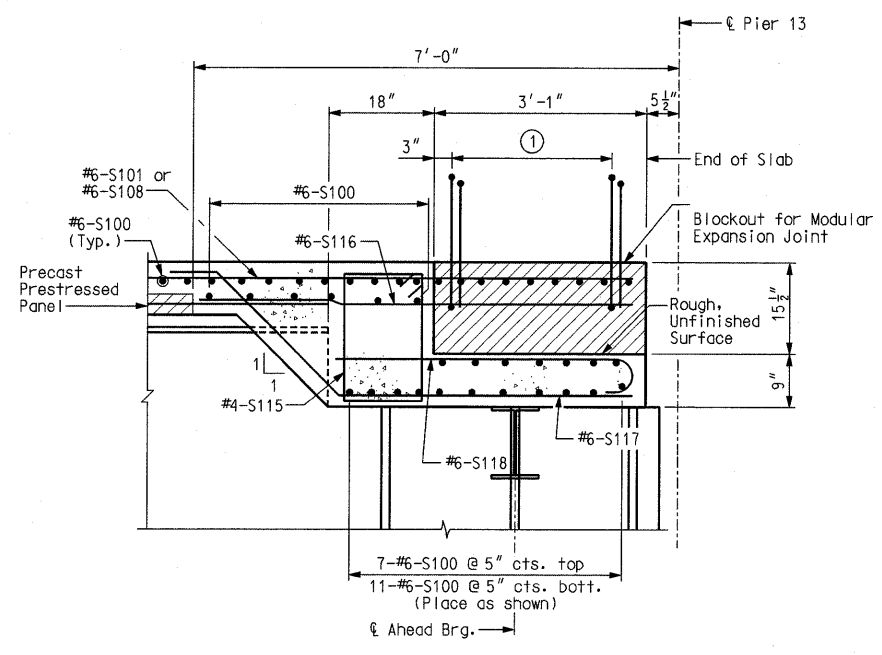
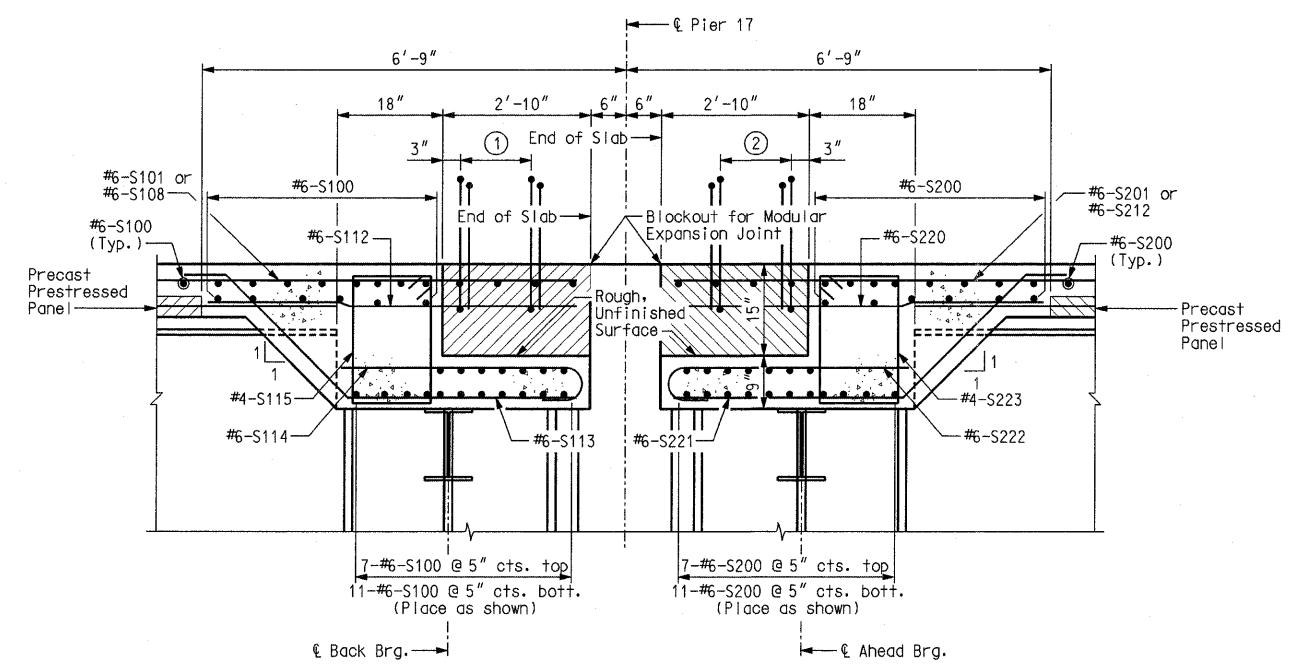


CONTRACT NO. 76D61	
F.A. ROUTE	SECTION
999	82-1B-2
FED. AID PROJECT ILLINOIS	
COUNTY	ST. CLAIR
USER NAME = jjelliff	
PLOT SCALE = *SCALE*	
PLOT DATE = 4/14/2010	
DESIGNED -	HNTB
CHECKED -	CMT
DRAWN -	CMT / HNTB
REVISED -	
REVISED -	
REVISED -	
REVISED -	

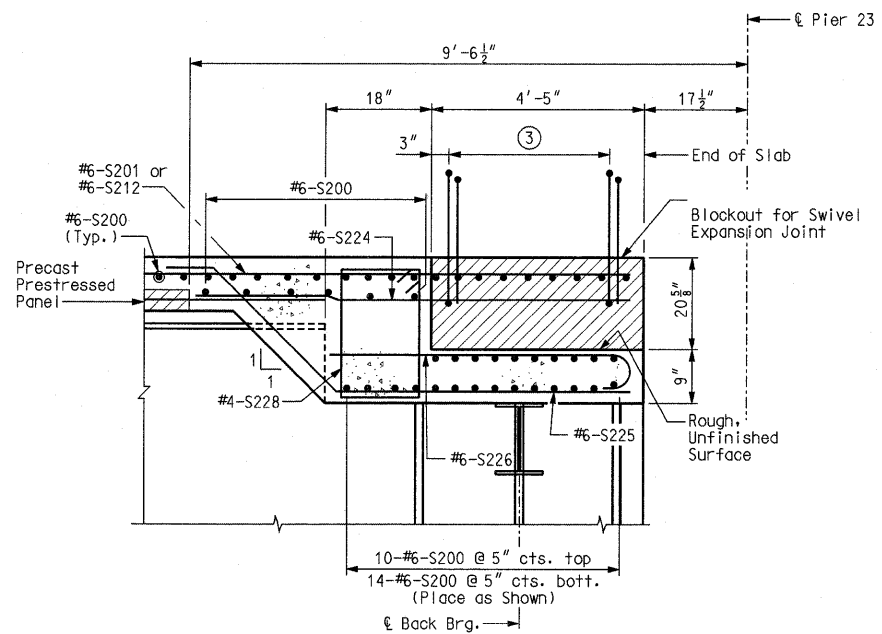


SECTION A-A
(at Pier 13)
(Looking South)

Note:
Modular Expansion Joint to be provided by others.



SECTION B-B
(at Pier 17)
(Looking North)



SECTION C-C
(at Pier 23)
(Looking North)

Note:
Modular Swivel Expansion Joint to be provided by others.

- ① 3 pairs of #5-R102 and #5-R103 bars @ 12" cts. shall be embedded in blockout concrete after expansion joint is in place *
- ② 3 pairs of #5-R202 and #5-R203 bars @ 12" cts. shall be embedded in blockout concrete after expansion joint is in place *
- ③ 4 pairs of #5-R202 and #5-R203 bars @ 12" cts. shall be embedded in blockout concrete after expansion joint is in place *

Notes:
For location of Section A-A, see Sheet Nos. 90 and 92.
For location of Section B-B, see Sheet Nos. 91, 93, 94 and 97.
For location of Section C-C, see Sheet Nos. 96 and 99.
Rotate #6-S114, #6-S118, #6-S222 and #6-S226 bars to maintain min. clearance.
Bars which interfere with the modular expansion joint boxes, shall be saw cut within 1 1/2" of expansion joint box(s). All other reinforcing steel between expansion joint box(s) shall remain and shall be incorporated in the concrete pour with the modular expansion joint.
* For Part Section A-A showing placement of #5-R102, #5-R103, #5-R202, and #5-R203 bars, see Sheet No. 117. For bar callouts, see Sheet Nos. 109 thru 116.

SLAB DETAILS

Detailed JUL 2009
Checked JUL 2009

ILLINOIS APPROACH STRUCTURE
 FOR NEW I-70 MISSISSIPPI RIVER BRIDGE

STATE OF ILLINOIS
 DEPARTMENT OF TRANSPORTATION

MISSOURI HIGHWAYS
 AND TRANSPORTATION COMMISSION

HNTB
715 KIRK DRIVE
KANSAS CITY, MO 64105
TELEPHONE (816) 472-1201
CERTIFICATE OF AUTHORITY
NO. 001270

CMT
CRANFORD, MURPHY & TILLY, INC.
2750 WEST WASHINGTON STREET
SPRINGFIELD, IL 62702
TELEPHONE (217) 787-8050
ENGINEERING CORPORATION - 000631