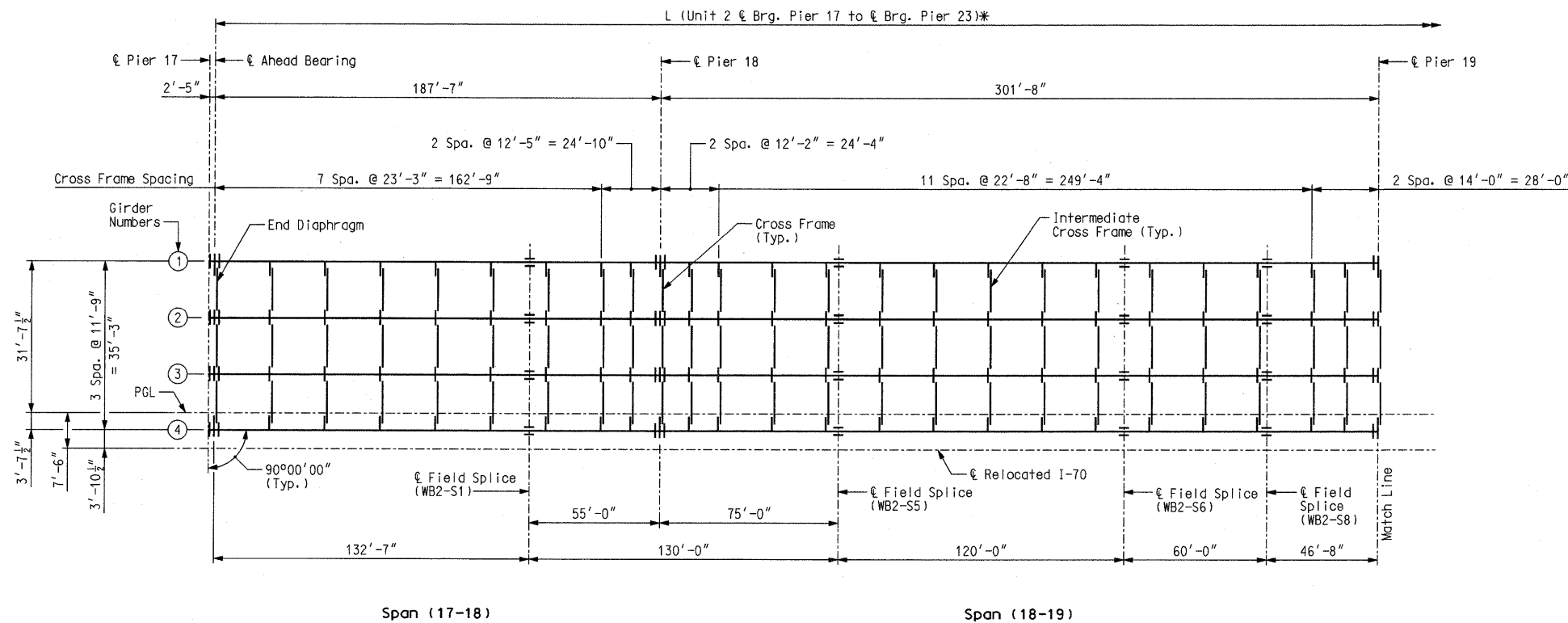
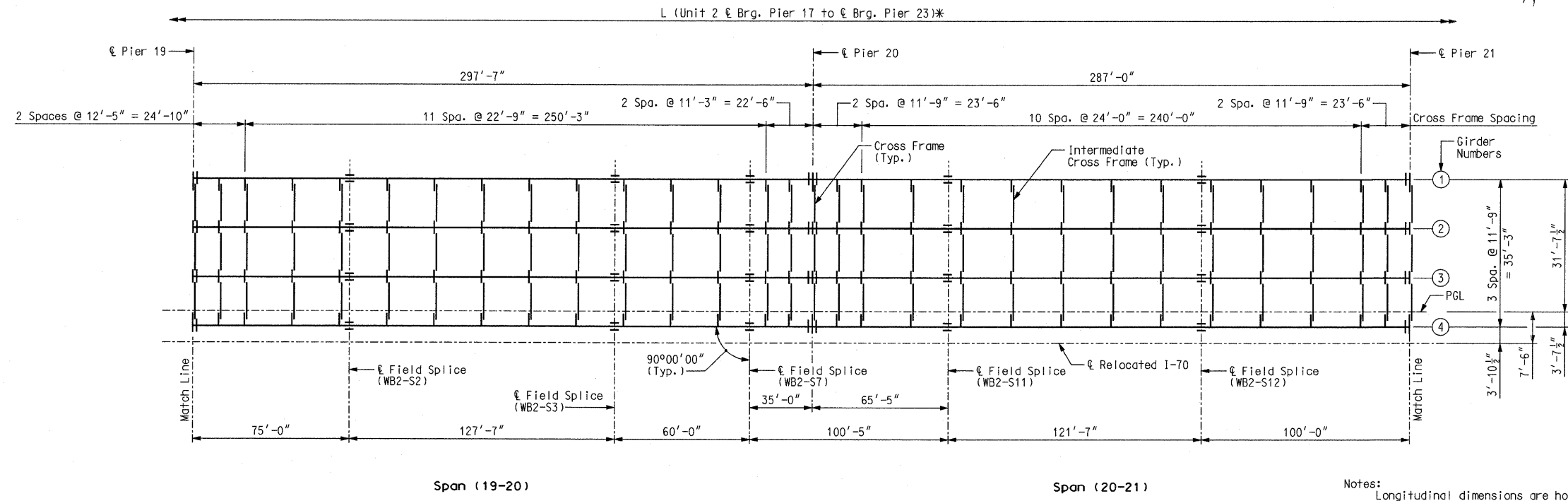


| | |
|------------------|-----------|
| F.A. ROUTE | SECTION |
| 999 | 82-1B-2 |
| FED. AID PROJECT | ILLINOIS |
| COUNTY | ST. CLAIR |

| |
|-----------------------|
| USER NAME = jcolliff |
| PLOT SCALE = #SCALE# |
| PLOT DATE = 4/14/2010 |
| DESIGNED - HNTB |
| CHECKED - CMT |
| DRAWN - CMT / HNTB |
| REVISED - |
| REVISED - |
| REVISED - |
| REVISED - |



FRAMING PLAN
Span (17-18) & (18-19)



FRAMING PLAN
Span (19-20) & (20-21)

Notes:
 Longitudinal dimensions are horizontal from centerline bearing to centerline bearing.
 For girder elevation, see Sheet Nos. 58 thru 60.
 For field splice detail, see Sheet Nos. 82 and 83.
 For cross frame and diaphragm details, see Sheet No. 87.
 For stiffener and miscellaneous steel details, see Sheet No. 88.
 * For dimension L see Girder Dimensions table on Sheet No. 51.

FRAMING PLAN WB - UNIT 2 (1 OF 2)

Detailed JUL 2009
 Checked JUL 2009

Note: This drawing is not to scale. Follow dimensions. Sheet No. 50 of 152

STATE OF ILLINOIS
 DEPARTMENT OF TRANSPORTATION

MISSOURI HIGHWAYS
 AND TRANSPORTATION COMMISSION

ILLINOIS APPROACH STRUCTURE
 FOR NEW I-70 MISSISSIPPI RIVER BRIDGE

HNTB
 715 KIRK DRIVE
 KANSAS CITY, MO 64105
 TELEPHONE (816) 472-1201
 CERTIFICATE OF AUTHORITY
 NO. 001270

CMT
 CRAWFORD, MURPHY & TILLY, INC.
 2750 WEST WASHINGTON STREET
 SPRINGFIELD, IL 62702
 TELEPHONE (217) 787-8050
 ENGINEERING CORPORATION - 000631